

TEMPORARY 4" WHITE LINE, PAINT  
 DURABLE 4" WHITE LINE, THERMOPLASTIC  
 6+00 TO 7+93 SOLID LT  
 6+00 TO 8+20 SOLID RT  
 7+93 TO 8+13 SOLID LT (NO PARKING)  
 8+19 TO 8+41 SOLID LT (NO PARKING)  
 8+20 TO 11+00 SOLID RT  
 8+41 TO 11+00 SOLID LT

TEMPORARY 4" YELLOW LINE, PAINT  
 DURABLE 4" YELLOW LINE, THERMOPLASTIC  
 6+00 TO 8+17 SOLID LT & RT  
 8+26 TO 11+00 SOLID LT & RT

PORTLAND CEMENT CONCRETE SIDEWALK, 5 INCH  
 8+13 TO 8+19 LT (LANDING)  
 8+22 TO 8+30 RT (RAMP TYPE 6)

TEMPORARY CROSSWALK MARKING, PAINT  
 DURABLE CROSSWALK MARKING, THERMOPLASTIC  
 8+19 TO 8+25 LT TO RT

REHAB. DROP INLETS, CATCH BASINS,  
 OR MANHOLES, CLASS I, II, OR III

6+74 LT (CB)  
 7+77 RT (CB)  
 7+91 LT (CB)  
 8+31 LT (CB)  
 8+52 LT (CB)  
 8+76 LT (CB)  
 9+89 RT (CB)

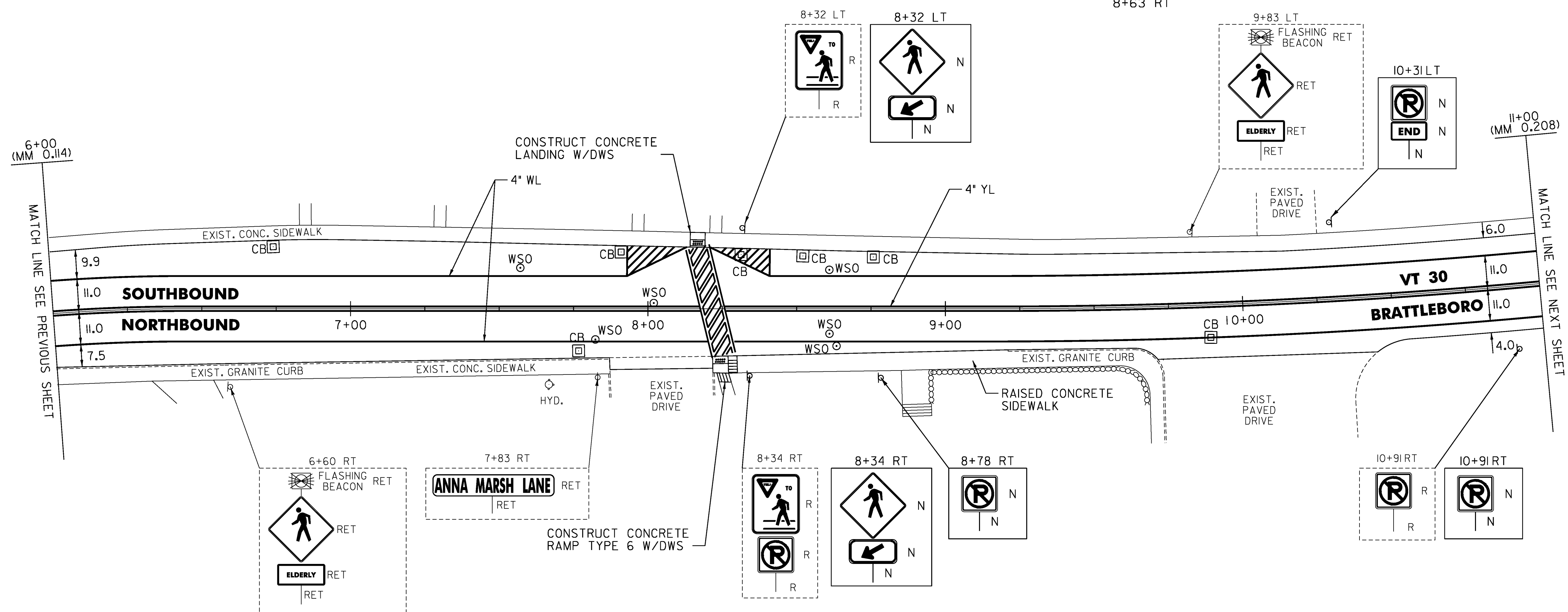
ADJUST ELEVATION  
 OF VALVE BOX

7+57 LT  
 7+82 RT  
 8+01 LT  
 8+61 LT  
 8+61 RT  
 8+63 RT

DETECTABLE WARNING  
 SURFACE (DWS)

8+17 LT  
 8+25 RT

REMOVING SIGNS  
 AS SHOWN - 4



NOT TO SCALE

LEGEND

- R = REMOVE EXISTING
- S = SALVAGE
- R&S = REMOVE AND SALVAGE
- N = NEW
- RET = RETAIN
- B-B = BACK TO BACK
- = EXISTING GUARDRAIL
- = PROPOSED GUARDRAIL
- YL = YELLOW LINE
- WL = WHITE LINE

ROADWAY LAYOUT 38 VT 30

PROJECT NAME: BRATTLEBORO

PROJECT NUMBER: STP 2623(I)

FILE NAME: /pave/06d214/pd214

PROJECT LEADER: PTS

DESIGNED BY: NULL

IPARM FILE NAME: 06D214\_64

PLOT DATE: 3/19/2010

DRAWN BY: MRS

CHECKED BY: PTS

SHEET 64 OF 163