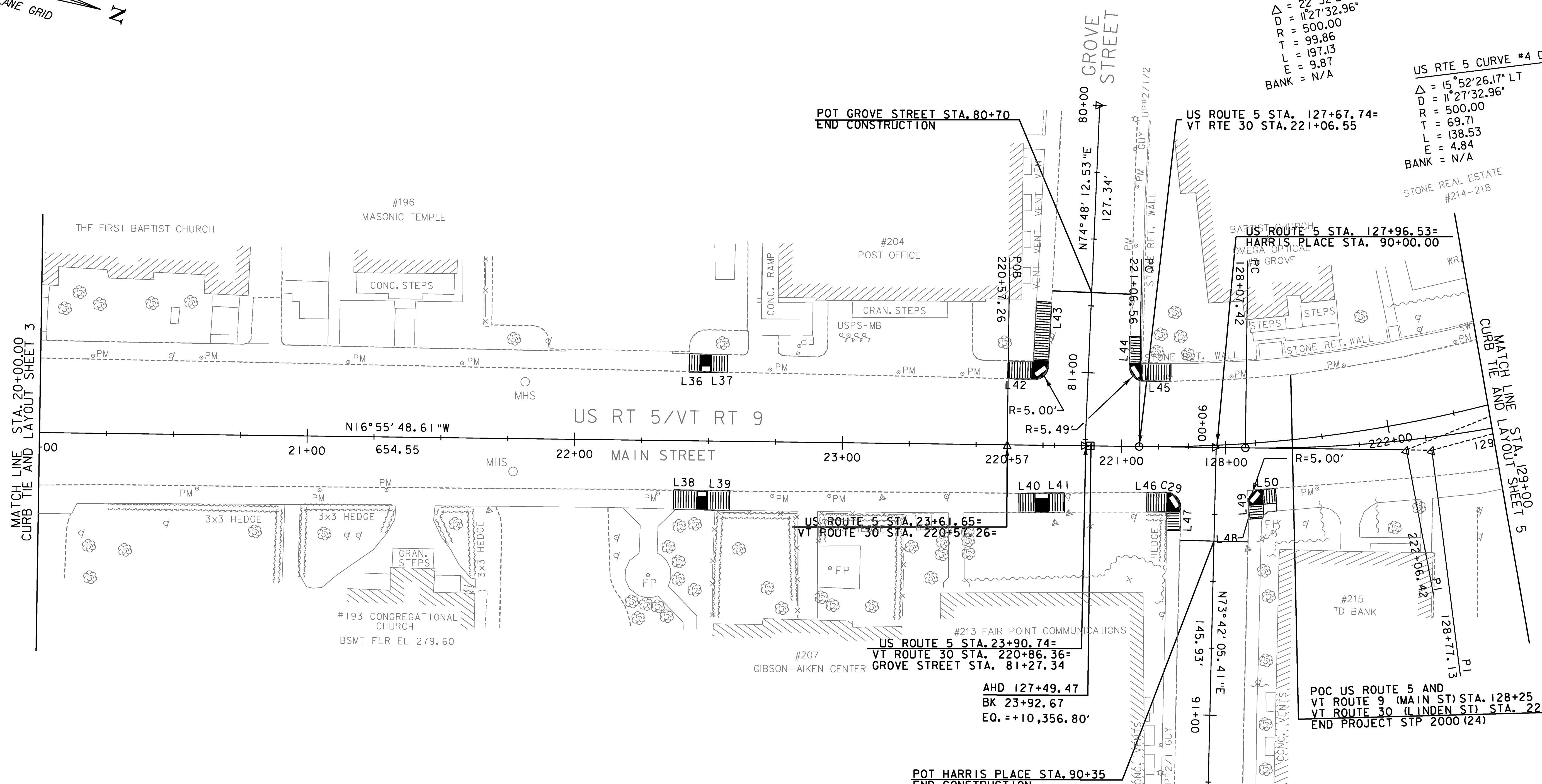


VT RTE 30 CURVE #1 DATA
 $\Delta = 22^\circ 32' 21.05''$ LT
 $D = 11^\circ 27' 32.96''$
 $R = 500.00$
 $T = 99.86$
 $L = 197.13$
 $E = 9.87$
 BANK = N/A

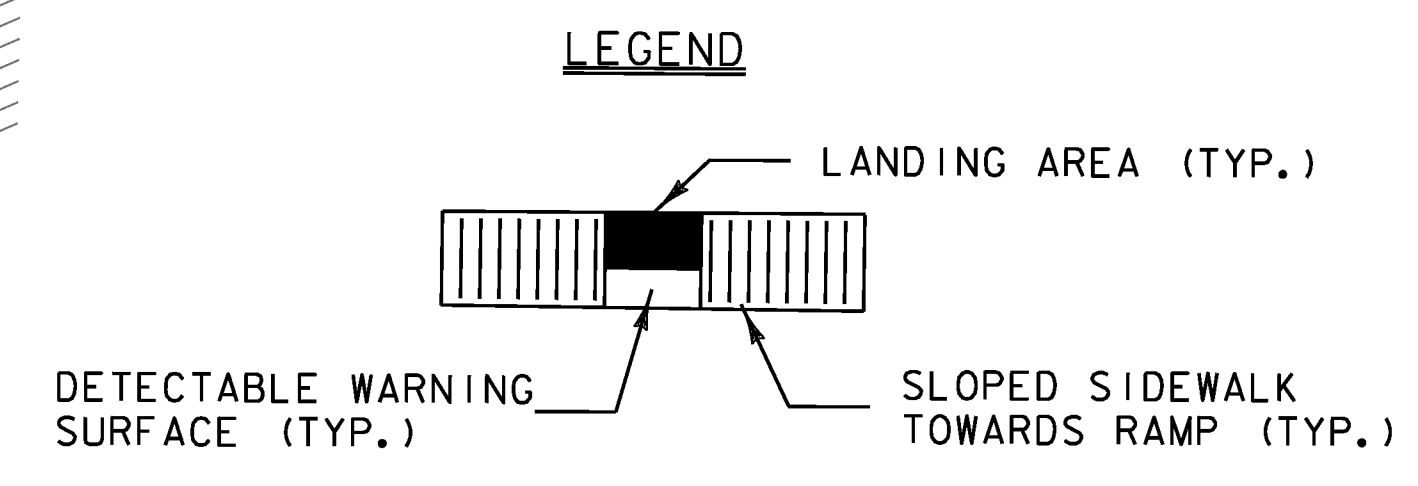
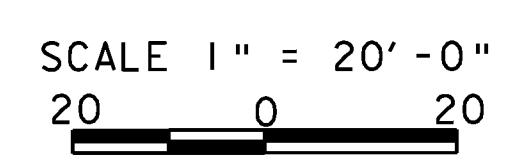
US RTE 5 CURVE #4 DATA
 $\Delta = 15^\circ 52' 26.17''$ LT
 $D = 11^\circ 27' 32.96''$
 $R = 500.00$
 $T = 69.71$
 $L = 138.53$
 $E = 4.84$
 BANK = N/A



MATCH LINE STA. 20+00.00 CURB TIE AND LAYOUT SHEET 3

MATCH LINE STA. 129+00.00 CURB TIE AND LAYOUT SHEET 5

LABEL	BEGIN		END		RADIUS (FT)	LENGTH (FT)
	STA.	OFFSET (FT)	STA.	OFFSET (FT)		
L36	US RTE. 5 NORTH 22+42.44 LT	25.74	US RTE. 5 NORTH 22+46.66 LT	25.73	NA	4.22
L37	US RTE. 5 NORTH 22+50.65 LT	25.75	US RTE. 5 NORTH 21+56.65 LT	25.74	NA	6.00
L38	US RTE. 5 NORTH 22+37.21 RT	18.46	US RTE. 5 NORTH 22+45.93 RT	18.47	NA	8.72
L39	US RTE. 5 NORTH 22+49.93 RT	18.47	US RTE. 5 NORTH 22+58.21 RT	18.46	NA	8.28
L40	US RTE. 5 NORTH 23+66.23 RT	18.10	US RTE. 5 NORTH 23+72.22 RT	17.96	NA	6.00
L41	US RTE. 5 NORTH 23+77.22 RT	17.84	US RTE. 5 NORTH 23+83.22 RT	17.70	NA	6.00
L42	US RTE. 5 NORTH 23+61.50 LT	24.73	US RTE. 5 NORTH 23+70.48 LT	24.65	NA	8.98
L43	GROVE ST. 80+96.25 RT	15.02	GROVE ST. 80+74.25 RT	14.80	NA	22.00
L44	GROVE ST. 80+85.70 LT	14.94	GROVE ST. 80+95.70 LT	15.26	NA	10.00
L45	US RTE. 5 NORTH 127+68.60 LT	24.56	US RTE. 5 NORTH 127+79.26 LT	24.46	NA	10.66
L46	US RTE. 5 NORTH 127+70.86 RT	17.16	US RTE. 5 NORTH 127+77.66 RT	17.00	NA	6.81
C29	US RTE. 5 NORTH 127+77.66 RT	17.00	US RTE. 5 NORTH 127+78.36 RT	17.02	5.75	0.69
L47	HARRIS PLACE 90+24.36 RT	12.73	HARRIS PLACE 90+31.36 RT	12.76	NA	7.00
L48	HARRIS PLACE 90+26.49 LT	12.82	HARRIS PLACE 90+24.46 LT	12.83	NA	2.03
L49	HARRIS PLACE 90+24.46 LT	12.83	HARRIS PLACE 90+21.31 LT	12.56	NA	3.16
L50	US RTE. 5 NORTH 128+13.74 RT	15.52	US RTE. 5 NORTH 128+18.58 RT	15.17	NA	5.00



PROJECT NAME: BRATTLEBORO
 PROJECT NUMBER: STP 2000(24)
 FILE NAME: z08d044curbbdr.dgn
 PROJECT LEADER: KEN UPMAL
 DESIGNED BY: B. SABEAN
 CURB TIE AND LAYOUT SHEET 4
 PLOT DATE: 3/16/2010
 DRAWN BY: A. ACHARYA
 CHECKED BY: V. KACOYANNAKIS
 SHEET 100 OF 163