

TEMPORARY 4" WHITE LINE, PAINT  
 DURABLE 4" WHITE LINE, RECESSED POLYUREA  
 79+00 TO 79+61 SOLID LT  
 79+00 TO 79+45 SOLID RT (LANE LINE)  
 79+00 TO 80+25 SOLID RT  
 80+22 TO 84+00 SOLID LT  
 80+57 TO 81+57 SOLID LT (LANE LINE)  
 80+67 TO 84+00 SOLID RT  
 81+57 TO 83+26 DOTTED LT (LANE LINE)

TEMPORARY 4" WHITE LINE, PAINT  
 DURABLE 4" WHITE LINE, THERMOPLASTIC  
 79+61 TO 80+24 SOLID RT (NO PARKING)  
 79+65 TO 79+66 SOLID LT (TH 400)  
 80+07 TO 80+16 SOLID LT (TH 400)  
 80+30 TO 80+38 SOLID RT (TH 494)  
 80+63 TO 80+65 SOLID RT (TH 494)

TEMPORARY 4" YELLOW LINE, PAINT  
 DURABLE 4" YELLOW LINE, RECESSED POLYUREA  
 79+00 TO 79+45 DOUBLE SOLID LT  
 80+57 TO 84+00 DOUBLE SOLID RT  
 81+59 TO 83+26 DOUBLE SOLID RT TO LT  
 83+26 TO 84+00 DOUBLE SOLID LT

TEMPORARY 4" YELLOW LINE, PAINT  
 DURABLE 4" YELLOW LINE, THERMOPLASTIC  
 79+87 DOUBLE SOLID LT (TH 400)  
 80+49 DOUBLE SOLID RT (TH 494)

TEMPORARY 24" STOP BAR, PAINT  
 DURABLE 24" STOP BAR, RECESSED TYPE I TAPE  
 79+65 TO 79+84 LT (TH 400)  
 80+48 TO 80+62 RT (TH 494)

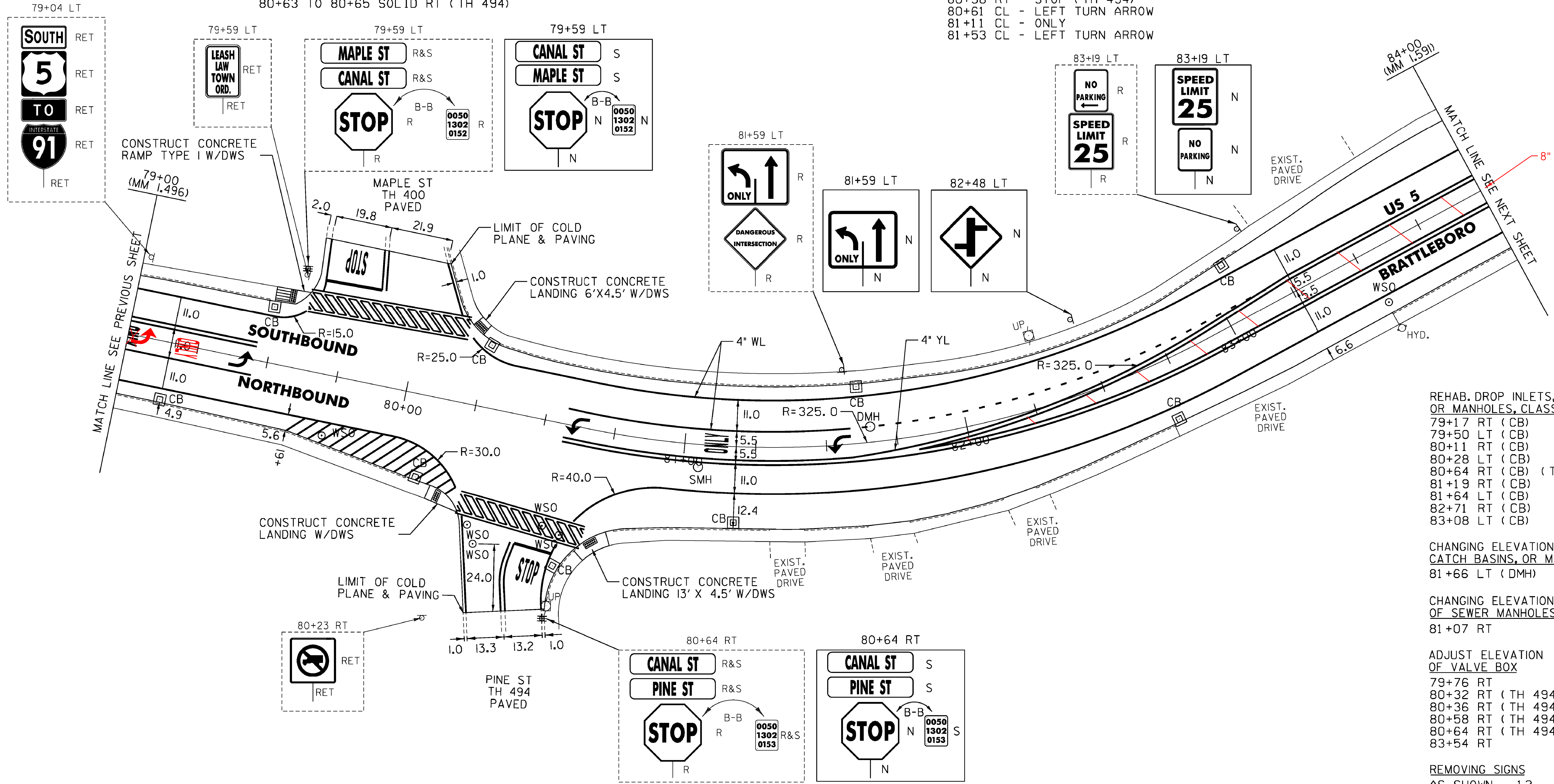
TEMPORARY CROSSWALK MARKING, PAINT  
 DURABLE CROSSWALK MARKING, THERMOPLASTIC  
 79+62 TO 80+20 LT  
 80+28 TO 80+72 RT

TEMPORARY LETTER OR SYMBOL, PAINT  
 79+41 CL - LEFT TURN ARROW  
 79+75 LT - STOP (TH 400)  
 80+56 RT - STOP (TH 494)  
 80+61 CL - LEFT TURN ARROW  
 81+53 RT - LEFT TURN ARROW

DURABLE LETTER OR SYMBOL, THERMOPLASTIC  
 79+41 CL - LEFT TURN ARROW  
 79+75 LT - STOP (TH 400)  
 80+56 RT - STOP (TH 494)  
 80+61 CL - LEFT TURN ARROW  
 81+11 CL - ONLY  
 81+53 CL - LEFT TURN ARROW

PORTLAND CEMENT CONCRETE SIDEWALK, 5 INCH  
 79+50 TO 79+61 LT (RAMP TYPE 1)  
 80+21 TO 80+25 LT (LANDING)  
 80+18 TO 80+26 RT (LANDING)  
 80+67 TO 80+81 RT (LANDING)

DETECTABLE WARNING SURFACE (DWS)  
 79+57 LT  
 80+20 RT  
 80+23 LT  
 80+74 RT



REHAB. DROP INLETS, CATCH BASINS, OR MANHOLES, CLASS I, II, OR III  
 79+17 RT (CB)  
 79+50 LT (CB)  
 80+11 RT (CB)  
 80+28 LT (CB)  
 80+64 RT (CB) (TH 494)  
 81+19 RT (CB)  
 81+64 LT (CB)  
 82+71 RT (CB)  
 83+08 LT (CB)

CHANGING ELEVATION OF DROP INLETS, CATCH BASINS, OR MANHOLES  
 81+66 LT (DMH)

CHANGING ELEVATION OF SEWER MANHOLES  
 81+07 RT

ADJUST ELEVATION OF VALVE BOX  
 79+76 RT  
 80+32 RT (TH 494)  
 80+36 RT (TH 494)  
 80+58 RT (TH 494)  
 80+64 RT (TH 494)  
 83+54 RT

REMOVING SIGNS  
 AS SHOWN - 12

ERECTING SALVAGED SIGNS  
 AS SHOWN - 5

**LEGEND**

R	=	REMOVE EXISTING
S	=	SALVAGE
R&S	=	REMOVE AND SALVAGE
N	=	NEW
RET	=	RETAIN
B-B	=	BACK TO BACK
---	=	EXISTING GUARDRAIL
---	=	PROPOSED GUARDRAIL
YL	=	YELLOW LINE
WL	=	WHITE LINE

**ROADWAY LAYOUT 6 US 5**

PROJECT NAME:	BRATTLEBORO
PROJECT NUMBER:	STP 2623(I)
FILE NAME:	/pave/06d214/pd214
PROJECT LEADER:	PTS
DESIGNED BY:	NLL
IPARM FILE NAME:	06D214_31
PLOT DATE:	3/19/2010
DRAWN BY:	MRS
CHECKED BY:	PTS
SHEET	31 OF 163

NOT TO SCALE

MODEL: Default

CLD\_08-0324\_z0600214.dgn