

TEMPORARY 4" WHITE LINE, PAINT
 DURABLE 4" WHITE LINE, RECESSED POLYUREA
 57+10 TO 59+34 SOLID LT
 57+38 TO 59+58 SOLID RT
 57+42 TO 59+57 SOLID RT (LANE LINE)
 60+51 TO 61+50 SOLID LT
 60+51 TO 61+50 SOLID RT
 60+58 TO 61+50 SOLID LT (LANE LINE)

TEMPORARY 4" WHITE LINE, PAINT
 DURABLE 4" WHITE LINE, THERMOPLASTIC
 59+78 TO 59+97 SOLID RT (TH 530)
 60+20 SOLID RT (TH 530) (LANE LINE)
 60+31 TO 60+43 SOLID RT (TH 530)

TEMPORARY 4" YELLOW LINE, PAINT
 DURABLE 4" YELLOW LINE, RECESSED POLYUREA
 57+40 TO 59+47 DOUBLE SOLID LT
 60+58 TO 61+50 DOUBLE SOLID RT

TEMPORARY 4" YELLOW LINE, PAINT
 DURABLE 4" YELLOW LINE, THERMOPLASTIC
 60+10 DOUBLE SOLID RT (TH 530)
 60+15 DOUBLE SOLID LT

TEMPORARY CROSSWALK MARKING, PAINT
 DURABLE CROSSWALK MARKING, THERMOPLASTIC
 59+69 TO 59+93 RT TO LT
 59+74 TO 60+41 RT
 59+94 TO 60+45 LT
 60+47 TO 60+48 LT TO RT

TEMPORARY 24" STOP BAR, PAINT
 DURABLE 24" STOP BAR, RECESSED TYPE ITAPE
 59+45 LT TO RT
 59+57 RT
 59+92 TO 60+12 LT (PLAZA DR)
 60+09 TO 60+19 RT (TH 530)
 60+19 TO 60+34 RT (TH 530)
 60+58 LT TO RT

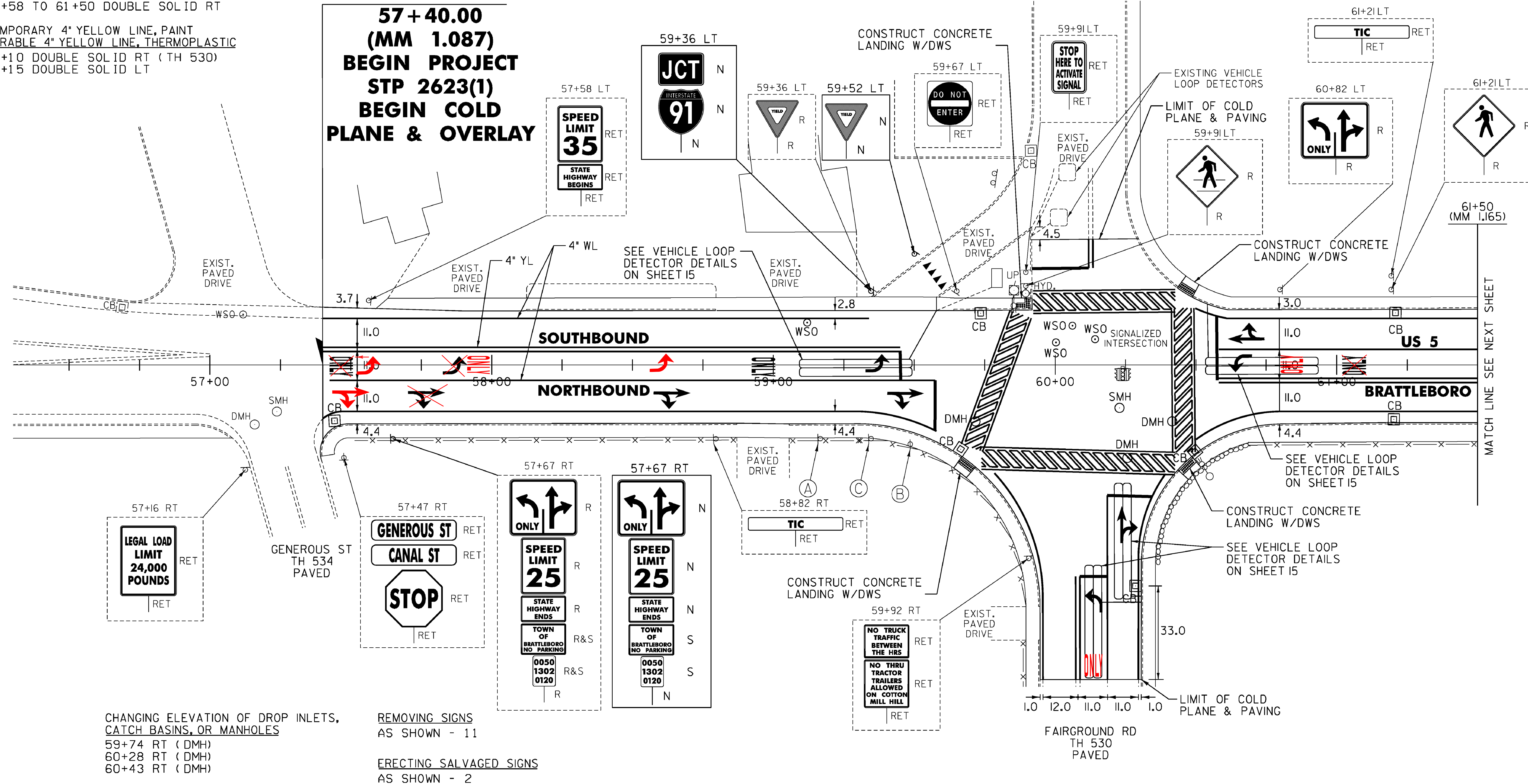
TEMPORARY LETTER OR SYMBOL, PAINT
 57+74 RT - RIGHT TURN ARROW
 57+75 RT - THRU ARROW
 57+86 RT - LEFT TURN ARROW
 58+62 RT - RIGHT TURN ARROW
 58+63 RT - THRU ARROW
 59+36 RT - LEFT TURN ARROW
 59+44 RT - RIGHT TURN ARROW
 59+45 RT - THRU ARROW
 60+14 RT - LEFT TURN ARROW (TH 530)
 60+24 RT - THRU ARROW (TH 530)
 60+24 RT - RIGHT TURN ARROW (TH 530)
 60+66 LT - LEFT TURN ARROW
 60+68 LT - THRU ARROW
 60+69 LT - RIGHT TURN ARROW

DURABLE LETTER OR SYMBOL, THERMOPLASTIC
 57+46 RT - ONLY
 57+74 RT - RIGHT TURN ARROW
 57+75 RT - THRU ARROW
 57+86 RT - LEFT TURN ARROW
 57+86 RT - LEFT TURN ARROW
 58+62 RT - RIGHT TURN ARROW
 58+63 RT - THRU ARROW
 58+96 RT - ONLY
 59+36 RT - LEFT TURN ARROW
 59+44 RT - RIGHT TURN ARROW
 59+45 RT - THRU ARROW
 59+53 TO 59+60 LT - YIELD MARKINGS (4)
 60+14 RT - LEFT TURN ARROW (TH 530)
 60+24 RT - THRU ARROW (TH 530)
 60+24 RT - RIGHT TURN ARROW (TH 530)
 60+66 LT - LEFT TURN ARROW
 60+68 LT - THRU ARROW
 60+69 LT - RIGHT TURN ARROW
 61+06 LT - ONLY

PORTLAND CEMENT CONCRETE SIDEWALK, 5 INCH
 59+66 TO 59+73 RT (LANDING)
 59+87 TO 59+93 LT (LANDING)
 60+45 TO 60+50 RT (LANDING)
 60+45 TO 60+50 LT (LANDING)

REMOVING AND
 RESETTING CURB
 59+87 TO 59+93 LT

US 5
57+40.00
(MM 1.087)
BEGIN PROJECT
STP 2623(1)
BEGIN COLD
PLANE & OVERLAY



DETECTABLE WARNING
 SURFACE (DWS)
 59+71 RT
 59+93 LT
 60+48 RT
 60+48 LT

CHANGING ELEVATION OF DROP INLETS,
 CATCH BASINS, OR MANHOLES
 59+74 RT (DMH)
 60+28 RT (DMH)
 60+43 RT (DMH)

REMOVING SIGNS
 AS SHOWN - 11

ERECTING SALVAGED SIGNS
 AS SHOWN - 2

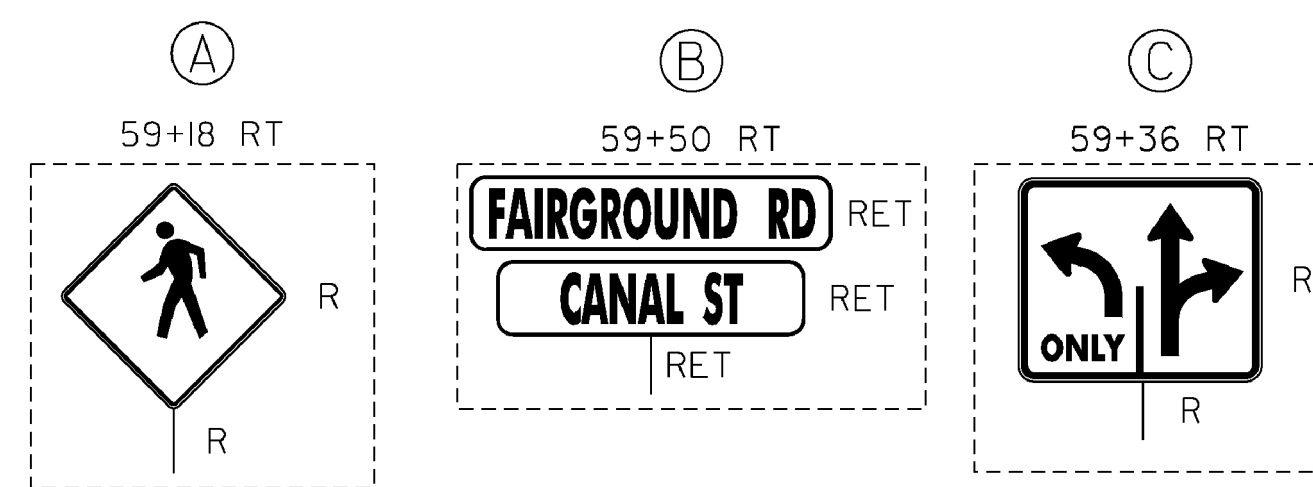
REHAB. DROP INLETS, CATCH BASINS,
 OR MANHOLES, CLASS I, II, OR III

CHANGING ELEVATION
 OF SEWER MANHOLES
 60+25 RT

ADJUST ELEVATION
 OF VALVE BOX

59+12 LT
 60+02 LT
 60+08 LT
 60+16 LT

57+44 RT (CB)
 59+68 RT (CB)
 59+75 LT (CB)
 60+30 RT (CB) (TH 530)
 60+52 RT (CB)
 61+22 RT (CB)
 61+22 LT (CB)



NOT TO SCALE

ROADWAY LAYOUT 1 US 5

PROJECT NAME: BRATTLEBORO
 PROJECT NUMBER: STP 2623(1)
 FILE NAME: /pave/06d214/pd214
 PROJECT LEADER: PTS
 DESIGNED BY: NULL
 IPARM FILE NAME: 06D214_26

PLOT DATE: 3/19/2010
 DRAWN BY: MRS
 CHECKED BY: PTS
 SHEET 26 OF 163

MODEL: De-frauit

CLD_08-0324_z06D0214.dgn