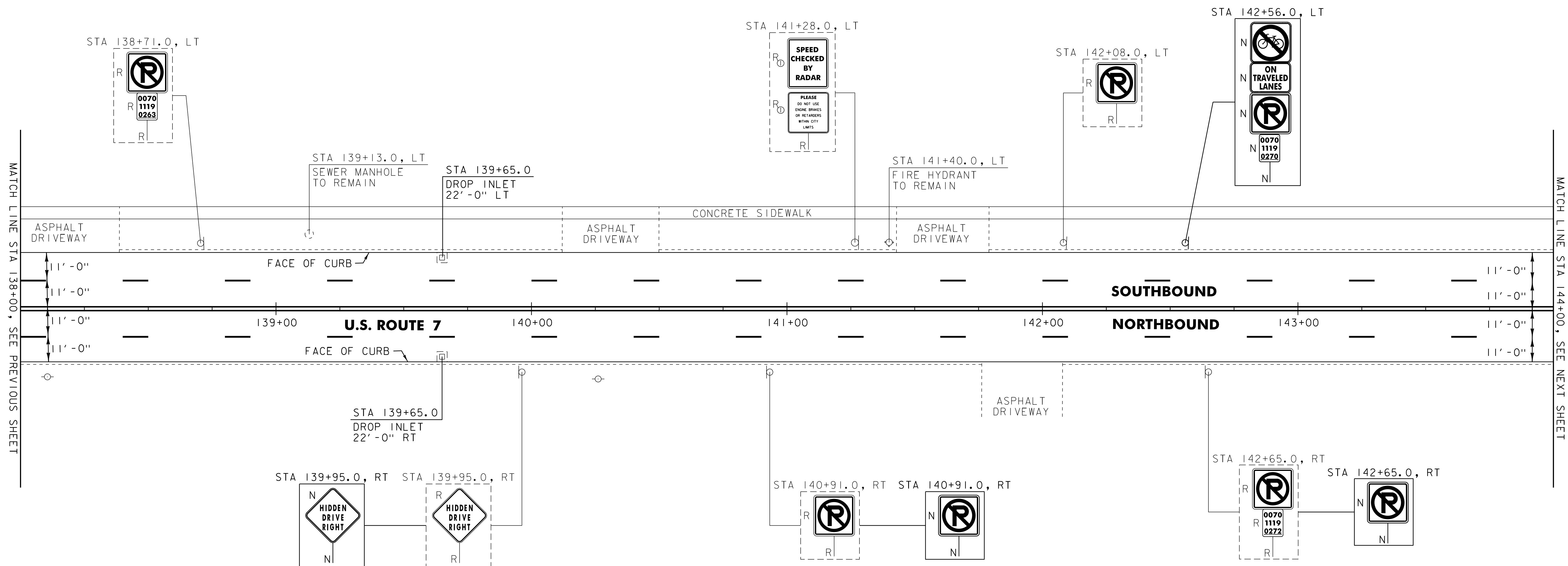


646.402 DURABLE 4 INCH WHITE LINE, THERMOPLASTIC
 U.S. ROUTE 7:
 STA 138+00.00 - STA 144+00.00 DASHED LANE LINE LT
 STA 138+00.00 - STA 144+00.00 DASHED LANE LINE RT
 646.602 TEMPORARY 4 INCH WHITE LINE, PAINT
 U.S. ROUTE 7:
 STA 138+00.00 - STA 144+00.00 DASHED LANE LINE LT
 STA 138+00.00 - STA 144+00.00 DASHED LANE LINE RT

646.412 DURABLE 4 INCH YELLOW LINE, THERMOPLASTIC
 (ALL LINES WILL INCLUDE C/L BREAKS FOR TOWN HIGHWAYS)
 U.S. ROUTE 7:
 STA 138+00.00 - STA 144+00.00 DOUBLE SOLID C/L
 646.612 TEMPORARY 4 INCH YELLOW LINE, PAINT
 (ALL LINES WILL INCLUDE C/L BREAKS FOR TOWN HIGHWAYS)
 U.S. ROUTE 7:
 STA 138+00.00 - STA 144+00.00 DOUBLE SOLID C/L

675.50 REMOVING SIGNS
 AS SHOWN - 9



604.412 REHAB. DROP INLETS, CATCH BASINS, OR MANHOLES, CLASS I
 U.S. ROUTE 7:
 STA 139+65.0 LT
 STA 139+65.0 RT

SIGN LEGEND
 R = REMOVE
 S = SALVAGE
 N = NEW
 RET = RETAIN
 B-B = BACK TO BACK
 EXISTING = -----
 NEW = _____
 Ⓞ = RETURN TO THE RUTLAND CITY

PROJECT LAYOUT SHEET #21	PROJECT NAME: RUTLAND CITY	PLOT DATE: 03-AUG-2012 12:2
	PROJECT NUMBER: NH 2605(1)S	DRAWN BY: CAK
	FILE NAME: p06d050.dgn	CHECKED BY: DWE
	DESIGNED BY: MJL	SHEET 33 OF 76
	IPARM FILE: p06d050i21.i	