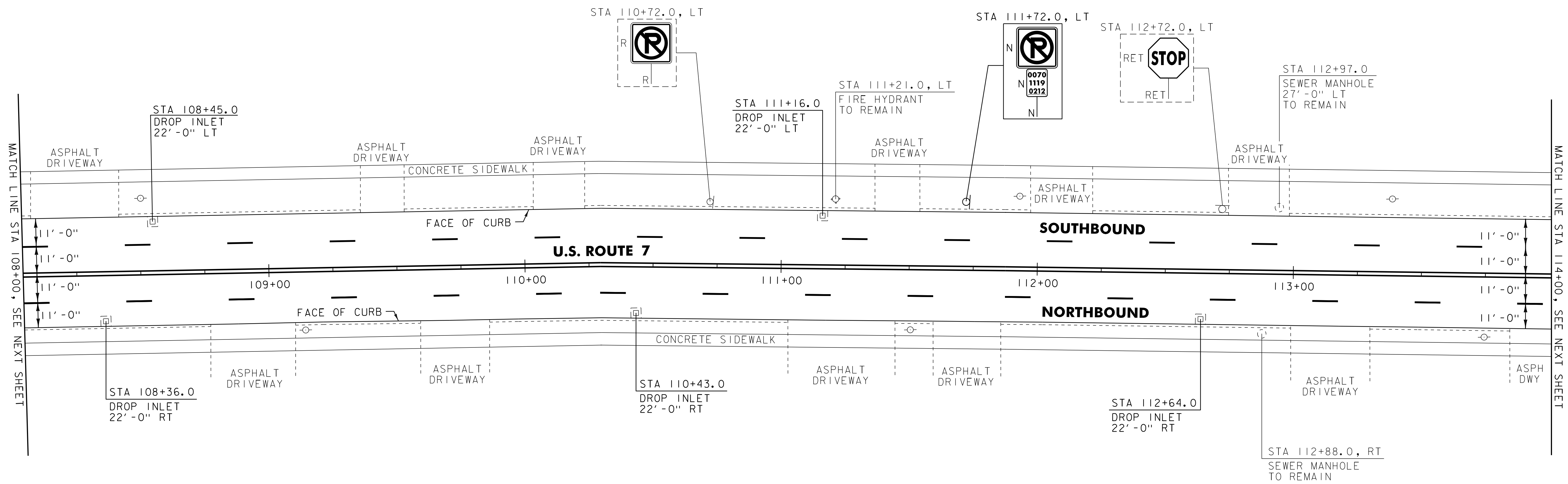


646.402 DURABLE 4 INCH WHITE LINE, THERMOPLASTIC
 U.S. ROUTE 7:
 STA 108+00.00 - STA 114+00.00 DASHED LANE LINE LT
 STA 108+00.00 - STA 114+00.00 DASHED LANE LINE RT
 646.602 TEMPORARY 4 INCH WHITE LINE, PAINT
 U.S. ROUTE 7:
 STA 108+00.00 - STA 114+00.00 DASHED LANE LINE LT
 STA 108+00.00 - STA 114+00.00 DASHED LANE LINE RT

646.412 DURABLE 4 INCH YELLOW LINE, THERMOPLASTIC
 (ALL LINES WILL INCLUDE C/L BREAKS FOR TOWN HIGHWAYS)
 U.S. ROUTE 7:
 STA 108+00.00 - STA 114+00.00 DOUBLE SOLID C/L
 646.612 TEMPORARY 4 INCH YELLOW LINE, PAINT
 (ALL LINES WILL INCLUDE C/L BREAKS FOR TOWN HIGHWAYS)
 U.S. ROUTE 7:
 STA 108+00.00 - STA 114+00.00 DOUBLE SOLID C/L

675.50 REMOVING SIGNS
 AS SHOWN - 1



604.412 REHAB. DROP INLETS, CATCH BASINS, OR MANHOLES, CLASS I
 U.S. ROUTE 7:
 STA 108+36.0 RT
 STA 108+45.0 LT
 STA 110+43.0 RT
 STA 111+16.0 LT
 STA 112+64.0 RT

SIGN LEGEND
 R = REMOVE
 S = SALVAGE
 N = NEW
 RET = RETAIN
 B-B = BACK TO BACK
 EXISTING = _____
 NEW = _____

PROJECT LAYOUT SHEET #16	PROJECT NAME: RUILAND CITY	PLOT DATE: 03-AUG-2012 12:2
	PROJECT NUMBER: NH 2605(1)S	DRAWN BY: CAK
	FILE NAME: p06d050.dgn	CHECKED BY: DWE
	PROJECT LEADER: DEG	SHEET 28 OF 76