

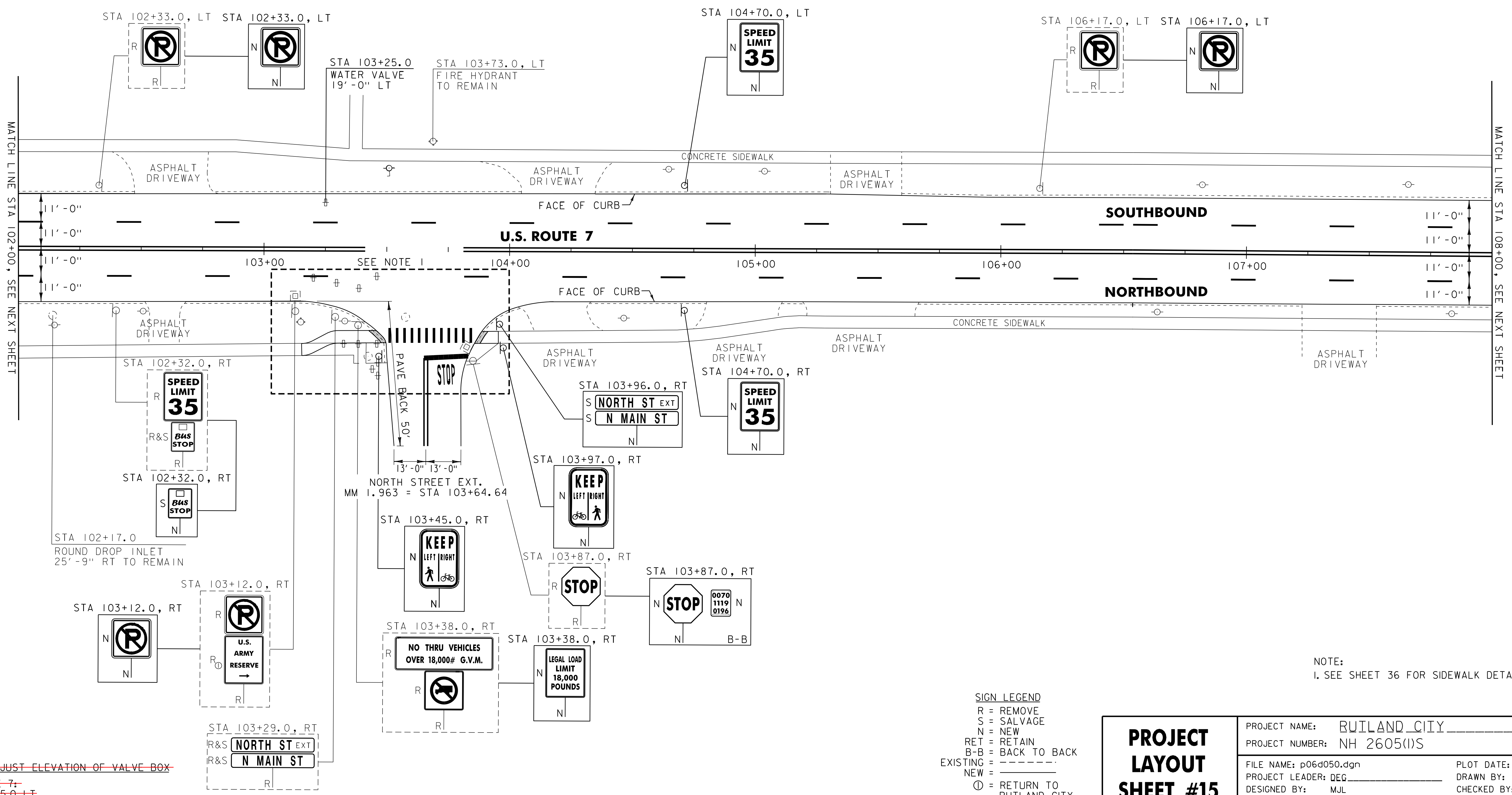
646.402 DURABLE 4 INCH WHITE LINE, THERMOPLASTIC  
 U.S. ROUTE 7:  
 STA 102+00.00 - STA 108+00.00 DASHED LANE LINE LT  
 STA 102+00.00 - STA 108+00.00 DASHED LANE LINE RT  
 646.602 TEMPORARY 4 INCH WHITE LINE, PAINT  
 U.S. ROUTE 7:  
 STA 102+00.00 - STA 108+00.00 DASHED LANE LINE LT  
 STA 102+00.00 - STA 108+00.00 DASHED LANE LINE RT

646.412 DURABLE 4 INCH YELLOW LINE, THERMOPLASTIC  
 (ALL LINES WILL INCLUDE C/L BREAKS FOR TOWN HIGHWAYS)  
 U.S. ROUTE 7:  
 STA 102+00.00 - STA 108+00.00 DOUBLE SOLID C/L  
 STA 103+64.64 DOUBLE SOLID RT, NORTH STREET EXT.  
 646.612 TEMPORARY 4 INCH YELLOW LINE, PAINT  
 (ALL LINES WILL INCLUDE C/L BREAKS FOR TOWN HIGHWAYS)  
 U.S. ROUTE 7:  
 STA 102+00.00 - STA 108+00.00 DOUBLE SOLID C/L  
 STA 103+64.64 DOUBLE SOLID RT, NORTH STREET EXT.

646.481 DURABLE 24 INCH STOP BAR, TYPE I TAPE  
 U.S. ROUTE 7:  
 STA 103+64.64 RT, NORTH STREET EXT.  
 646.682 TEMPORARY 24 INCH STOP BAR, PAINT  
 U.S. ROUTE 7:  
 STA 103+64.64 RT, NORTH STREET EXT.  
 646.491 DURABLE LETTER OR SYMBOL, TYPE I TAPE  
 U.S. ROUTE 7:  
 STA 103+64.64 RT, NORTH STREET EXT., "S,T,O,P" (4 EA)  
 646.692 TEMPORARY LETTER OR SYMBOL, PAINT  
 U.S. ROUTE 7:  
 STA 103+64.64 RT, NORTH STREET EXT., "S,T,O,P" (8 EA)

646.702 TEMPORARY CROSSWALK MARKING, PAINT  
 U.S. ROUTE 7:  
 STA 103+64.64 RT, NORTH STREET EXT.  
 646.502 DURABLE CROSSWALK MARKING, THERMOPLASTIC  
 U.S. ROUTE 7:  
 STA 103+64.64 RT, NORTH STREET EXT.

675.50 REMOVING SIGNS  
 AS SHOWN - II  
 675.60 ERECTING SALVAGED SIGNS  
 AS SHOWN - 3



~~629.20 ADJUST ELEVATION OF VALVE BOX~~  
 U.S. ROUTE 7:  
 STA 103+25.0 LT

**SIGN LEGEND**  
 R = REMOVE  
 S = SALVAGE  
 N = NEW  
 RET = RETAIN  
 B-B = BACK TO BACK  
 EXISTING = \_\_\_\_\_  
 NEW = \_\_\_\_\_  
 ⊙ = RETURN TO RUTLAND CITY

NOTE:  
 I. SEE SHEET 36 FOR SIDEWALK DETAIL SHEET.

<b>PROJECT LAYOUT SHEET #15</b>	PROJECT NAME: RUTLAND CITY	PLOT DATE: 03-AUG-2012 12:2
	PROJECT NUMBER: NH 2605(I)S	DRAWN BY: C&K
	FILE NAME: p06d050.dgn	CHECKED BY: DWE
	DESIGNED BY: MJL	SHEET 21 OF 76
	IPARM FILE: p06d050115.i	