

646.402 DURABLE 4 INCH WHITE LINE, THERMOPLASTIC
 U.S. ROUTE 7:
 STA 97+00.00 - STA 102+00.00 DASHED LANE LINE LT
 STA 97+00.00 - STA 102+00.00 DASHED LANE LINE RT

646.602 TEMPORARY 4 INCH WHITE LINE, PAINT
 U.S. ROUTE 7:
 STA 97+00.00 - STA 102+00.00 DASHED LANE LINE LT
 STA 97+00.00 - STA 102+00.00 DASHED LANE LINE RT

646.412 DURABLE 4 INCH YELLOW LINE, THERMOPLASTIC
 (ALL LINES WILL INCLUDE C/L BREAKS FOR TOWN HIGHWAYS)
 U.S. ROUTE 7:
 STA 97+00.00 - STA 102+00.00 DOUBLE SOLID C/L
 STA 97+99.68 DOUBLE SOLID RT, HIGH STREET
 STA 99+73.92 DOUBLE SOLID LT, MELROSE AVENUE

646.612 TEMPORARY 4 INCH YELLOW LINE, PAINT
 (ALL LINES WILL INCLUDE C/L BREAKS FOR TOWN HIGHWAYS)
 U.S. ROUTE 7:
 STA 97+00.00 - STA 102+00.00 DOUBLE SOLID C/L
 STA 97+99.68 DOUBLE SOLID RT, HIGH STREET
 STA 99+73.92 DOUBLE SOLID LT, MELROSE AVENUE

646.481 DURABLE 24 INCH STOP BAR, TYPE I TAFE
 U.S. ROUTE 7:
 STA 97+99.68 RT, HIGH STREET
 STA 99+73.92 LT, MELROSE AVENUE

646.682 TEMPORARY 24 INCH STOP BAR, PAINT
 U.S. ROUTE 7:
 STA 97+99.68 RT, HIGH STREET
 STA 99+73.92 LT, MELROSE AVENUE

646.491 DURABLE LETTER OR SYMBOL, TYPE I TAFE
 U.S. ROUTE 7:
 STA 97+99.68 RT, HIGH STREET, "S,T,O,P" (4 EA)
 STA 99+73.92 LT, MELROSE AVENUE, "S,T,O,P" (4 EA)

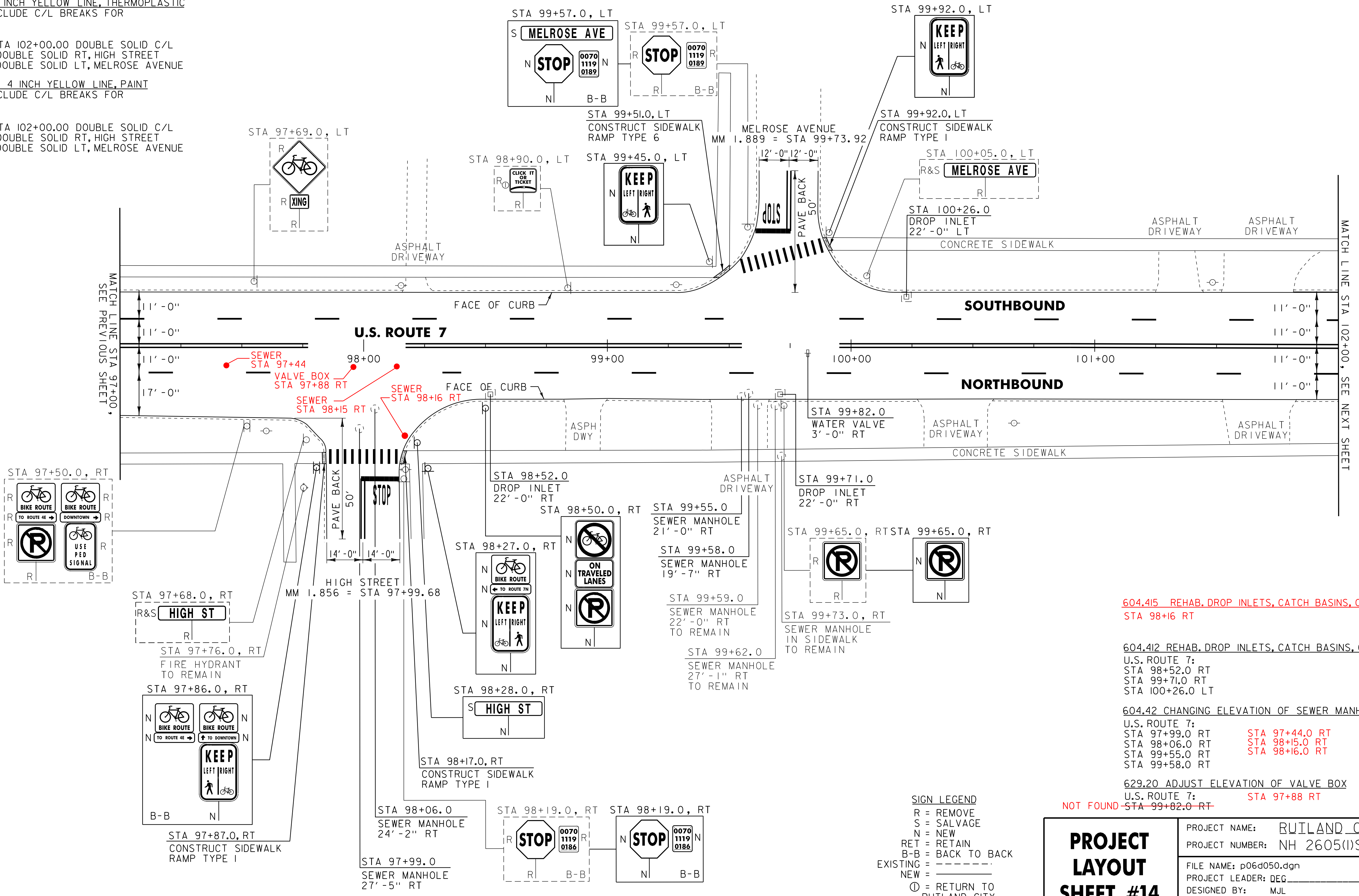
646.692 TEMPORARY LETTER OR SYMBOL, PAINT
 U.S. ROUTE 7:
 STA 98+01.92 RT, HIGH STREET, "S,T,O,P" (8 EA)
 STA 99+76.16 LT, MELROSE AVENUE, "S,T,O,P" (8 EA)

646.702 DURABLE CROSSWALK MARKING, PAINT
 U.S. ROUTE 7:
 STA 97+99.68 RT, HIGH STREET
 STA 99+73.92 LT, MELROSE AVENUE

646.502 DURABLE CROSSWALK MARKING, THERMOPLASTIC
 U.S. ROUTE 7:
 STA 97+99.68 RT, HIGH STREET
 STA 99+73.92 LT, MELROSE AVENUE

675.50 REMOVING SIGNS
 AS SHOWN - 16

675.60 ERECTING SALVAGED SIGNS
 AS SHOWN - 2



604.415 REHAB. DROP INLETS, CATCH BASINS, OR MANHOLES, CLASS II
 STA 98+16 RT

604.412 REHAB. DROP INLETS, CATCH BASINS, OR MANHOLES, CLASS I
 U.S. ROUTE 7:
 STA 98+52.0 RT
 STA 99+71.0 RT
 STA 100+26.0 LT

604.42 CHANGING ELEVATION OF SEWER MANHOLES
 U.S. ROUTE 7:
 STA 97+99.0 RT STA 97+44.0 RT
 STA 98+06.0 RT STA 98+15.0 RT
 STA 99+55.0 RT STA 98+16.0 RT
 STA 99+58.0 RT

629.20 ADJUST ELEVATION OF VALVE BOX
 U.S. ROUTE 7: STA 97+88 RT
 NOT FOUND - STA 99+82.0 RT

SIGN LEGEND
 R = REMOVE
 S = SALVAGE
 N = NEW
 RET = RETAIN
 B-B = BACK TO BACK
 EXISTING = _____
 NEW = _____
 ⊕ = RETURN TO
 RUTLAND CITY

PROJECT LAYOUT SHEET #14

PROJECT NAME: RUTLAND CITY	PLOT DATE: 03-AUG-2012 12:2
PROJECT NUMBER: NH 2605(I)S	DRAWN BY: CAK
FILE NAME: p06d050.dgn	DESIGNED BY: MJL
PROJECT LEADER: DEG	CHECKED BY: DWE
IPARM FILE: p06d050i4.i	SHEET 26 OF 76