

646.402 DURABLE 4 INCH WHITE LINE, THERMOPLASTIC  
 U.S. ROUTE 7:  
 STA 77+00.00 - STA 77+75.00 DOTTED LANE LINE LT  
 STA 77+00.00 - STA 81+00.00 DASHED LANE LINE LT  
 STA 77+00.00 - STA 81+00.00 DASHED LANE LINE RT

646.602 TEMPORARY 4 INCH WHITE LINE, PAINT  
 U.S. ROUTE 7:  
 STA 77+00.00 - STA 77+75.00 DOTTED LANE LINE LT  
 STA 77+00.00 - STA 81+00.00 DASHED LANE LINE LT  
 STA 77+00.00 - STA 81+00.00 DASHED LANE LINE RT

646.412 DURABLE 4 INCH YELLOW LINE, THERMOPLASTIC  
 (ALL LINES WILL INCLUDE C/L BREAKS FOR TOWN HIGHWAYS)

U.S. ROUTE 7:  
 STA 77+00.00 - STA 79+00.00 DOUBLE SOLID C/L & LT  
 STA 79+00.00 - STA 81+00.00 DOUBLE SOLID C/L  
 STA 77+98.56 DOUBLE SOLID RT, AIKEN PLACE

646.612 TEMPORARY 4 INCH YELLOW LINE, PAINT  
 (ALL LINES WILL INCLUDE C/L BREAKS FOR TOWN HIGHWAYS)

U.S. ROUTE 7:  
 STA 77+00.00 - STA 79+00.00 DOUBLE SOLID C/L & LT  
 STA 79+00.00 - STA 81+00.00 DOUBLE SOLID C/L  
 STA 77+98.56 DOUBLE SOLID RT, AIKEN PLACE

646.481 DURABLE 24 INCH STOP BAR, TYPE I TAPE  
 U.S. ROUTE 7:  
 STA 77+98.56 RT, AIKEN PLACE

646.682 TEMPORARY 24 INCH STOP BAR, PAINT  
 U.S. ROUTE 7:  
 STA 77+98.56 RT, AIKEN PLACE

646.491 DURABLE LETTER OR SYMBOL, TYPE I TAPE  
 U.S. ROUTE 7:  
 STA 77+98.56 RT, AIKEN PLACE "S,T,O,P," (4 EA.)

646.692 TEMPORARY LETTER OR SYMBOL, PAINT  
 U.S. ROUTE 7:  
 STA 77+98.56 RT, AIKEN PLACE "S,T,O,P," (8 EA.)

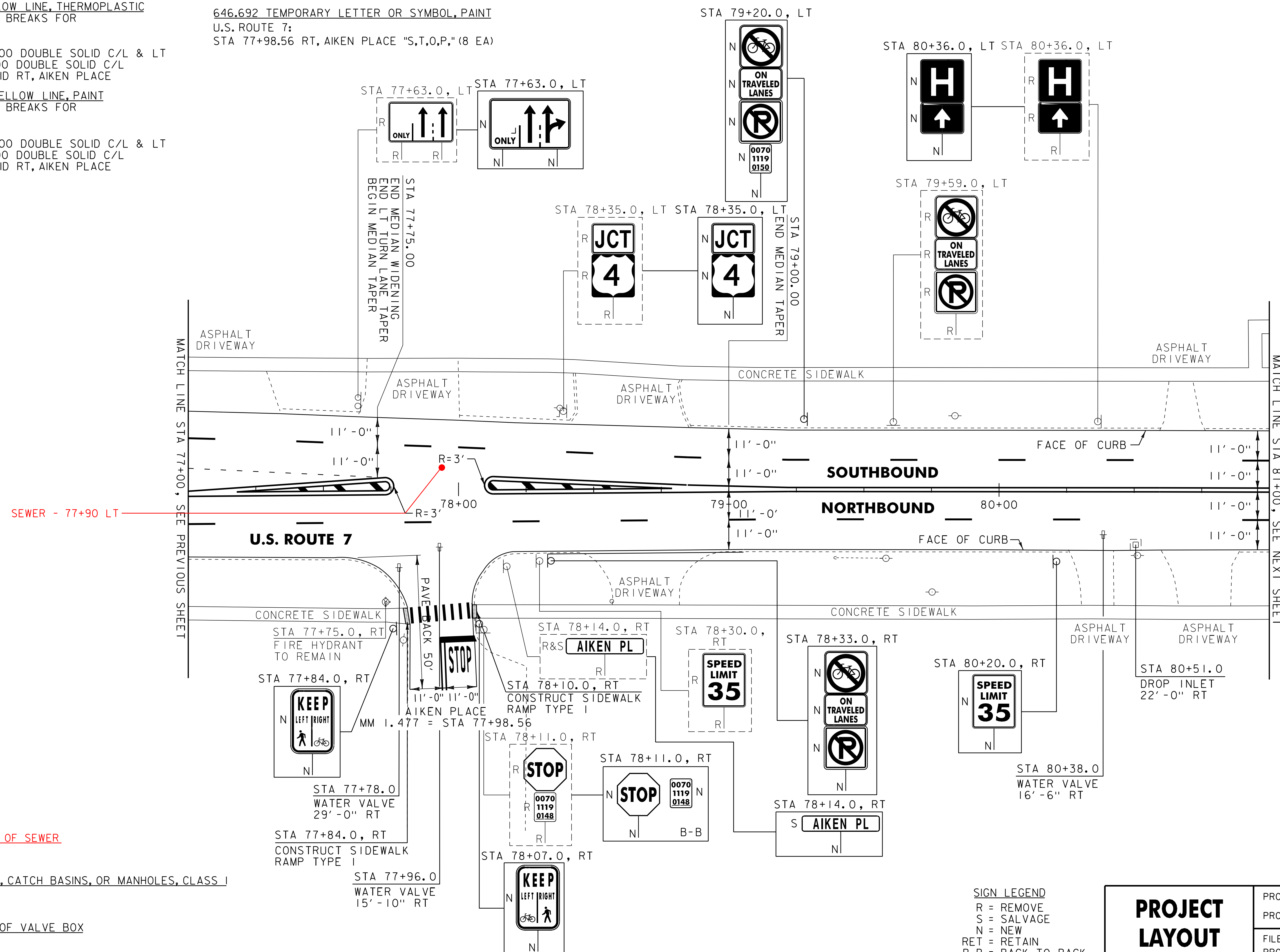
646.702 DURABLE CROSSWALK MARKING, PAINT  
 U.S. ROUTE 7:  
 STA 77+98.56 RT, AIKEN PLACE

646.452 DURABLE 8 INCH YELLOW LINE, THERMOPLASTIC  
 U.S. ROUTE 7:  
 STA 77+00.00 - STA 77+75.00 HATCHED MEDIAN LT  
 STA 78+10.00 - STA 79+00.00 HATCHED MEDIAN LT

646.502 DURABLE CROSSWALK MARKING, THERMOPLASTIC  
 U.S. ROUTE 7:  
 STA 77+98.56 RT, AIKEN PLACE

675.50 REMOVING SIGNS  
 AS SHOWN - 12

675.60 ERECTING SALVAGED SIGNS  
 AS SHOWN - 1



604.42 CHANGE ELEVATIONS OF SEWER  
 STA 77+90 LT

604.412 REHAB. DROP INLETS, CATCH BASINS, OR MANHOLES, CLASS I

U.S. ROUTE 7:  
 STA 80+51.0 RT

629.20 ADJUST ELEVATION OF VALVE BOX

U.S. ROUTE 7:  
 STA 77+78.0 RT  
 STA 77+96.0 RT  
 STA 80+38.0 RT

**SIGN LEGEND**  
 R = REMOVE  
 S = SALVAGE  
 N = NEW  
 RET = RETAIN  
 B-B = BACK TO BACK  
 EXISTING = \_\_\_\_\_  
 NEW = \_\_\_\_\_

<b>PROJECT LAYOUT SHEET #10</b>	PROJECT NAME: RUILAND CITY	PLOT DATE: 03-AUG-2012 12:2
	PROJECT NUMBER: NH 2605(1)S	DRAWN BY: C&K
	FILE NAME: p06d050.dgn	CHECKED BY: DWE
	DESIGNED BY: MJL	SHEET 22 OF 76