

646.402 DURABLE 4 INCH WHITE LINE, THERMOPLASTIC
(ALL LINES WILL INCLUDE EDGE LINE BREAKS AND RADIUS FOR TOWN HIGHWAYS)

U.S. ROUTE 7:
STA 18+00.00 - STA 24+00.00 EDGE LINE LT/RT
STA 18+00.00 - STA 24+00.00 DASHED LANE LINE LT
STA 18+00.00 - STA 24+00.00 DASHED LANE LINE RT
STA 20+96.16 SOLID LANE LINE RT, ALLEN STREET
STA 21+41.00 - STA 23+00.00 SOLID LANE LINE LT
STA 21+50.00 - STA 22+50.00 DOTTED LINE RT
STA 22+50.00 - STA 23+89.00 SOLID LANE LINE RT
STA 23+00.00 - STA 24+00.00 DOTTED LINE LT

646.412 DURABLE 4 INCH YELLOW LINE, THERMOPLASTIC
(ALL LINES WILL INCLUDE C/L BREAKS FOR TOWN HIGHWAYS)

U.S. ROUTE 7:
STA 18+00.00 - STA 20+00.00 SOLID/DASH TURN LANE LINES LT/RT
STA 20+00.00 - STA 20+55.00 DOUBLE SOLID LT/RT
STA 20+96.16 DOUBLE SOLID RT, ALLEN STREET
STA 21+40.00 - STA 22+50.00 DOUBLE SOLID C/L & RT
STA 22+50.00 - STA 23+00.00 DOUBLE SOLID C/L
STA 23+00.00 - STA 24+00.00 DOUBLE SOLID C/L & RT
STA 18+61.0, LT

646.452 DURABLE 8 INCH YELLOW LINE, THERMOPLASTIC
U.S. ROUTE 7:
STA 20+00.00 - STA 20+55.00 HATCHED MEDIAN LT/RT
STA 21+40.00 - STA 22+50.00 HATCHED MEDIAN LT/RT
STA 23+00.00 - STA 24+00.00 HATCHED MEDIAN LT/RT

646.491 DURABLE LETTER OR SYMBOL, TYPE I TAPE
U.S. ROUTE 7:
STA 19+56.00 C/L, ARROW (1EA)
STA 19+67.00 C/L, ARROW (1EA)
STA 20+96.16 RT, ALLEN STREET, ARROW (1EA)
STA 20+96.16 RT, ALLEN STREET, ARROW (1EA)
STA 21+49.25 LT, ARROW (1EA)
STA 22+22.50 LT, "O,N,L,Y" (4 EA)
STA 22+54.25 RT, ARROW (1EA)
STA 22+95.75 LT, ARROW (1EA)
STA 23+18.00 RT, "O,N,L,Y" (4 EA)
STA 23+80.75 RT, ARROW (1EA)

646.511 DURABLE RAILROAD CROSSWALK SYMBOL, TYPE I TAPE
U.S. ROUTE 7:
STA 19+10.00 RT (1EA)
STA 19+10.00 RT (1EA)

646.602 TEMPORARY 4 INCH WHITE LINE, PAINT
(ALL LINES WILL INCLUDE EDGE LINE BREAKS AND RADIUS FOR TOWN HIGHWAYS)

U.S. ROUTE 7:
STA 18+00.00 - STA 24+00.00 EDGE LINE LT/RT
STA 18+00.00 - STA 24+00.00 DASHED LANE LINE LT
STA 18+00.00 - STA 24+00.00 DASHED LANE LINE RT
STA 20+96.16 SOLID LANE LINE RT, ALLEN STREET
STA 21+41.00 - STA 23+00.00 SOLID LANE LINE LT
STA 21+50.00 - STA 22+50.00 DOTTED LINE RT
STA 22+50.00 - STA 23+89.00 SOLID LANE LINE RT
STA 23+00.00 - STA 24+00.00 DOTTED LINE LT

646.612 TEMPORARY 4 INCH YELLOW LINE, PAINT
(ALL LINES WILL INCLUDE C/L BREAKS FOR TOWN HIGHWAYS)

U.S. ROUTE 7:
STA 18+00.00 - STA 20+00.00 SOLID/DASH TURN LANE LINES LT/RT
STA 20+00.00 - STA 20+55.00 DOUBLE SOLID LT/RT
STA 20+96.16 DOUBLE SOLID RT, ALLEN STREET
STA 21+40.00 - STA 22+50.00 DOUBLE SOLID C/L & RT
STA 22+50.00 - STA 23+00.00 DOUBLE SOLID C/L
STA 23+00.00 - STA 24+00.00 DOUBLE SOLID C/L & RT

646.692 TEMPORARY LETTER OR SYMBOL, PAINT

U.S. ROUTE 7:
STA 19+56.00 C/L, ARROW (2 EA)
STA 19+67.00 C/L, ARROW (2 EA)
STA 20+96.16 RT, ALLEN STREET, ARROW (1EA)
STA 20+96.16 RT, ALLEN STREET, ARROW (1EA)
STA 21+49.25 LT, ARROW (2 EA)
STA 22+95.75 LT, ARROW (2 EA)
STA 22+54.25 RT, ARROW (2 EA)
STA 23+80.75 RT, ARROW (2 EA)

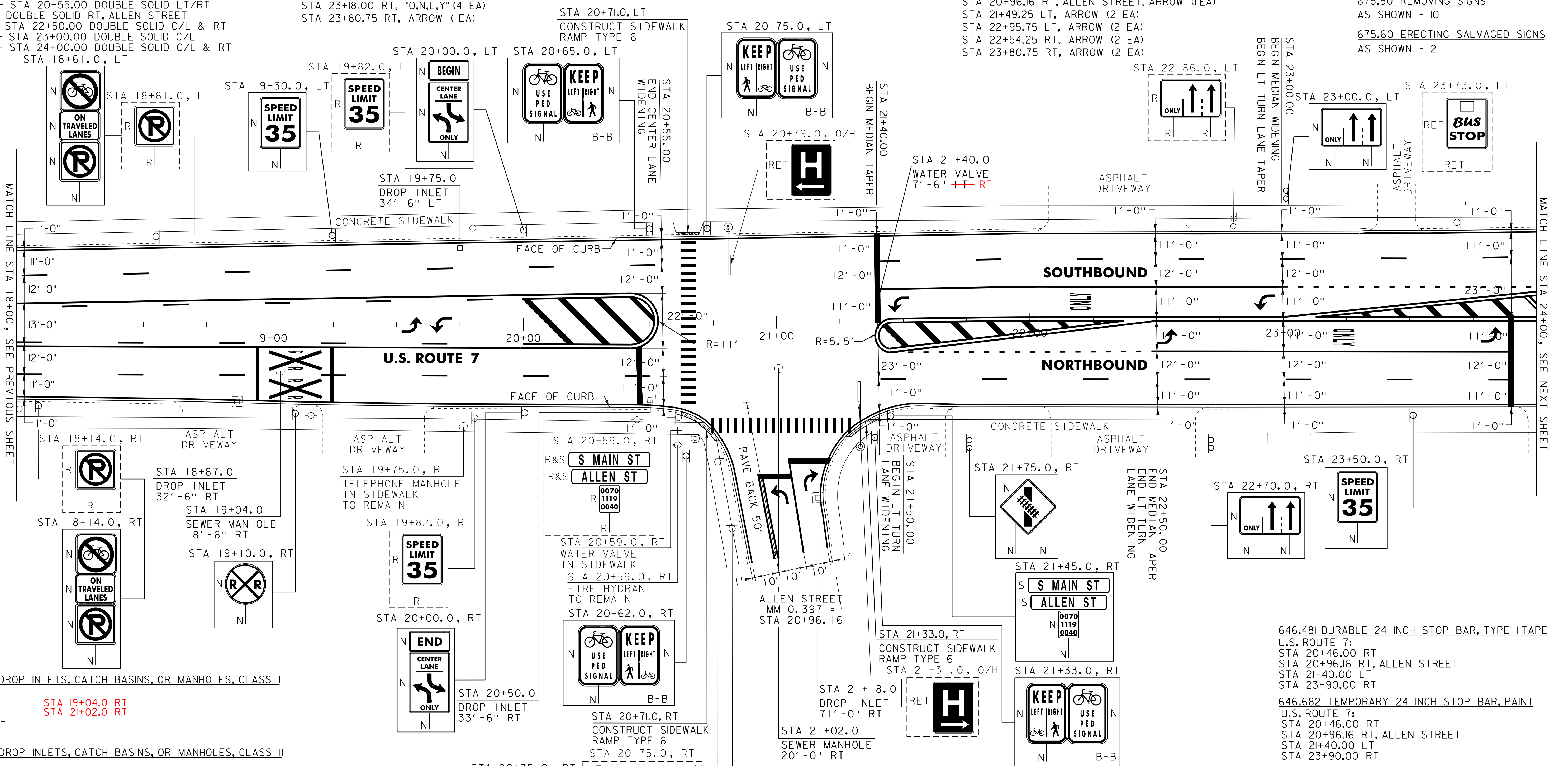
646.702 TEMPORARY CROSSWALK MARKING, PAINT
U.S. ROUTE 7:
STA 20+71.00 LT/RT
STA 20+96.16 RT, ALLEN STREET

646.712 TEMPORARY RAILROAD CROSSWALK SYMBOL, PAINT
U.S. ROUTE 7:
STA 19+10.00 RT (2 EA)
STA 19+10.00 RT (2 EA)

646.502 DURABLE CROSSWALK MARKING, THERMOPLASTIC
U.S. ROUTE 7:
STA 20+71.00 LT/RT
STA 20+96.16 RT, ALLEN STREET

675.50 REMOVING SIGNS
AS SHOWN - 10

675.60 ERECTING SALVAGED SIGNS
AS SHOWN - 2



604.412 REHAB. DROP INLETS, CATCH BASINS, OR MANHOLES, CLASS I

U.S. ROUTE 7:
STA 18+87.0 RT
STA 19+75.0 LT
STA 20+50.0 RT
STA 21+18.0 RT

604.415 REHAB. DROP INLETS, CATCH BASINS, OR MANHOLES, CLASS II

U.S. ROUTE 7:
~~STA 19+04.0 RT~~
~~STA 21+02.0 RT~~

604.42 CHANGING ELEVATION OF SEWER MANHOLES

U.S. ROUTE 7:
~~STA 21+02.0 RT~~

629.20 ADJUST ELEVATION OF VALVE BOX

NOTE:
1. SEE SHEETS 39 & 40 FOR VIDEO DETECTION SYSTEM SHEETS.

SIGN LEGEND
R = REMOVE
S = SALVAGE
N = NEW
RET = RETAIN
B-B = BACK TO BACK
EXISTING = _____
NEW = _____

<h2>PROJECT LAYOUT SHEET #4</h2>	PROJECT NAME: RUILAND CITY	FILE NAME: p06d050.dgn	PLOT DATE: 03-AUG-2012 12:2
	PROJECT NUMBER: NH 2605(1)S	PROJECT LEADER: DEG	DRAWN BY: C&K
		DESIGNED BY: MJL	CHECKED BY: DWE