

646.416 DURABLE 4 INCH YELLOW LINE, RECESSED POLYUREA  
 (ALL LINES WILL INCLUDE C/L BREAKS FOR TOWN HIGHWAYS) S=SOLID, D=DASHED  
 CORNWALL:  
 STA 230+89.44 DOUBLE SOLID LT, TH-6

646.612 TEMPORARY 4 INCH YELLOW LINE, PAINT  
 (ALL LINES WILL INCLUDE C/L BREAKS FOR TOWN HIGHWAYS) S=SOLID, D=DASHED  
 CORNWALL:  
 STA 230+89.44 DOUBLE SOLID LT, TH-6

646.481 DURABLE 24 INCH STOP BAR, TYPE ITAPE  
 CORNWALL:  
 STA 230+89.44 LT, TH-6

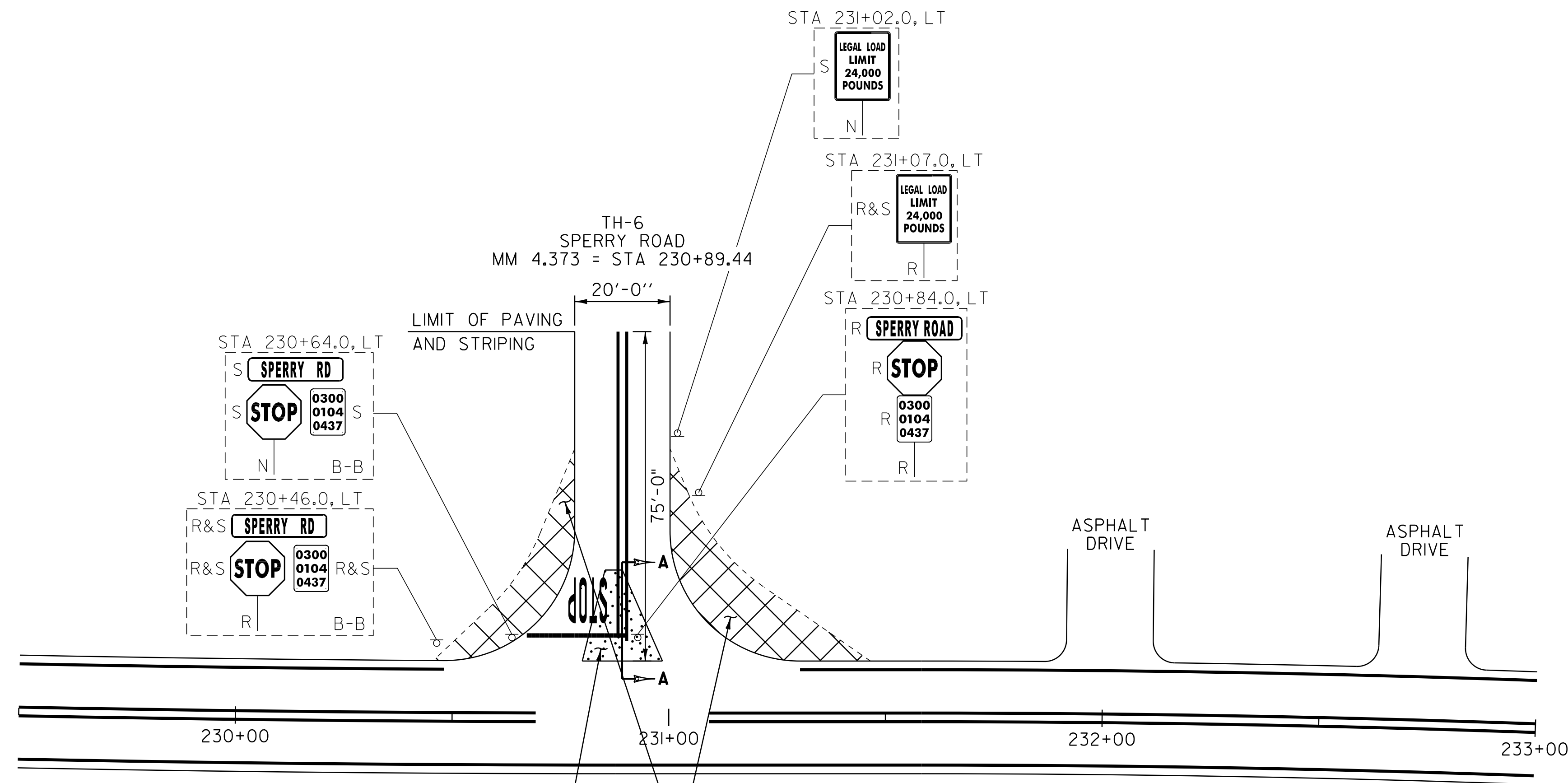
646.682 TEMPORARY 24 INCH STOP BAR, PAINT  
 CORNWALL:  
 STA 230+89.44 LT, TH-6

646.491 DURABLE LETTER OR SYMBOL, TYPE ITAPE  
 CORNWALL:  
 STA 230+89.44 LT, TH-6 "S,T,O,P" (4 EA)

646.692 TEMPORARY LETTER OR SYMBOL, PAINT  
 CORNWALL:  
 STA 230+89.44 LT, TH-6 "S,T,O,P" (4 EA)

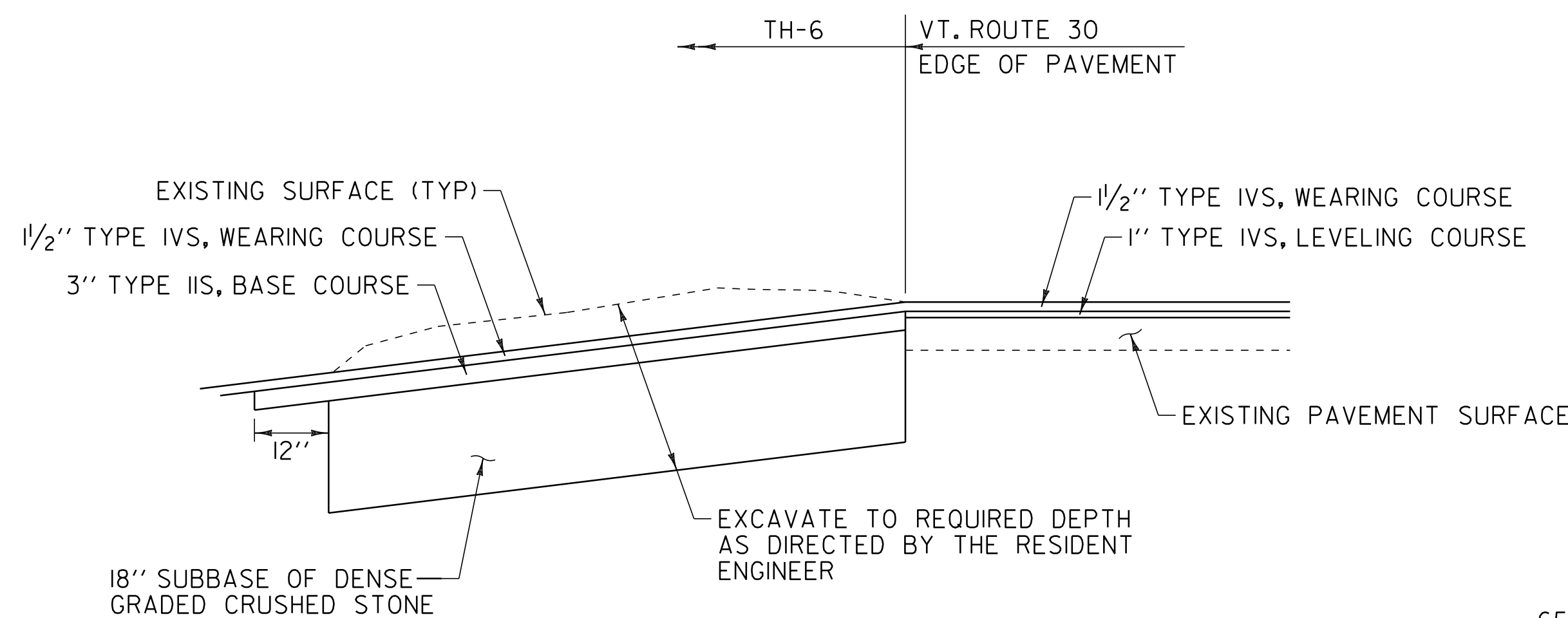
675.50 REMOVING SIGNS  
 AS SHOWN - 7

675.60 ERECTING SALVAGED SIGNS  
 AS SHOWN - 4



REMOVE EXISTING GRASSED ISLAND TO A DEPTH SUFFICIENT TO PLACE 18" OF ITEM 301.35 AND PUT BACK 3" OF TYPE IIS AND A 1/2" TYPE IVS WEARING COURSE TO MATCH THE SURROUNDING ASPHALT AS DIRECTED BY THE RESIDENT ENGINEER. EXCAVATION SHALL BE PAID FOR UNDER ITEM 203.15 COMMON EXCAVATION.

REMOVE 18" EXISTING GRAVEL/ASPHALT TO BE PAID FOR UNDER ITEM 203.15 COMMON EXCAVATION AND REPLACE WITH EARTH DITCHING MATERIAL USED BORROW, 4" TOPSOIL, SEED AND TEMPORARY EROSION MATTING AS DIRECTED BY THE RESIDENT ENGINEER, GRADE TO DRAIN.



SECTION A-A

653.20 TEMPORARY EROSION MATTING  
 STA 230+45.0 - STA 230+75.0, LT (61 SY)  
 STA 231+00.0 - STA 231+50.0, LT (90 SY)

**SIGN LEGEND**  
 R = REMOVE  
 S = SALVAGE  
 N = NEW  
 RET = RETAIN  
 B-B = BACK TO BACK  
 EXISTING = - - - - -  
 NEW = \_\_\_\_\_

<b>NOT TO SCALE</b>	
<b>TH-6 INTERSECTION DETAIL SHEET</b>	
PROJECT NAME: WHITING - MIDDLEBURY	PLOT DATE: 30-MAR-2012 14:14
PROJECT NUMBER: STP 2629(1)	DRAWN BY: C.A.K.
FILE NAME: p06c226.dgn	CHECKED BY: D.E.G.
PROJECT LEADER: D.E.G.	DWG. NO. p06c2261n+3.1
DESIGNED BY: M.J.L.	SHEET 43 OF 133