

646.402 DURABLE 4 INCH WHITE LINE, THERMOPLASTIC
 (ALL LINES WILL INCLUDE EDGE LINE BREAKS AND RADIUS FOR TOWN HIGHWAYS)
 HANCOCK:
 STA 6+00.00 - STA 20+00.00 EDGE LINE LT & RT

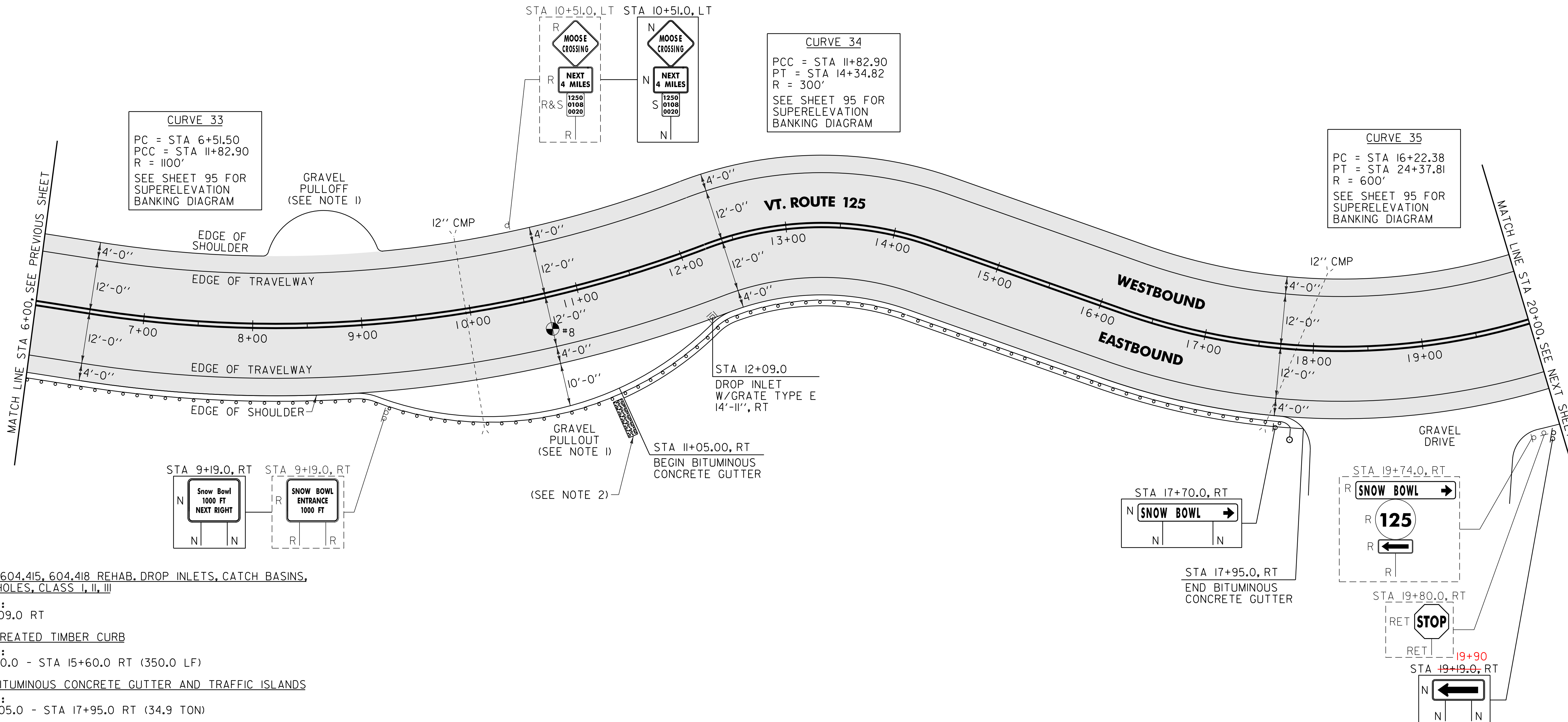
646.412 DURABLE 4 INCH YELLOW LINE, THERMOPLASTIC
 (ALL LINES WILL INCLUDE C/L BREAKS FOR TOWN HIGHWAYS) S=SOLID, D=DASHED
 HANCOCK:
 STA 6+00.00 - STA 20+00.00 LT CL RT
 S - S

646.602 TEMPORARY 4 INCH WHITE LINE, PAINT
 (ALL LINES WILL INCLUDE EDGE LINE BREAKS AND RADIUS FOR TOWN HIGHWAYS)
 HANCOCK:
 STA 6+00.00 - STA 20+00.00 EDGE LINE LT & RT

646.612 TEMPORARY 4 INCH YELLOW LINE, PAINT
 (ALL LINES WILL INCLUDE C/L BREAKS FOR TOWN HIGHWAYS) S=SOLID, D=DASHED
 HANCOCK:
 STA 6+00.00 - STA 20+00.00 LT CL RT
 S - S

675.50 REMOVING SIGNS
 AS SHOWN - 7

675.60 ERECTING SALVAGED SIGNS
 AS SHOWN - 1



604.412, 604.415, 604.418 REHAB. DROP INLETS, CATCH BASINS, OR MANHOLES, CLASS I, II, III

HANCOCK:
 STA 12+09.0 RT

616.35 TREATED TIMBER CURB
 HANCOCK:
 STA 12+10.0 - STA 15+60.0 RT (350.0 LF)

616.47 BITUMINOUS CONCRETE GUTTER AND TRAFFIC ISLANDS
 HANCOCK:
 STA 10+05.0 - STA 17+95.0 RT (34.9 TON)

621.80 REMOVAL AND DISPOSAL OF GUARDRAIL
 HANCOCK:
 STA 6+00.0 - STA 17+84.0 RT (1184.0 LF)

676.10 DELINEATOR WITH STEEL POST
 TYPE I WHITE
 HANCOCK:
 STA 17+79.9 RT

613.10 STONE FILL, TYPE I
 HANCOCK:
 STA 11+05.0 RT (2.5 CY)

900.620 SPECIAL PROVISION (MANUFACTURED TERMINAL SECTION, FLARED/WEATHERING)
 HANCOCK:
 STA 17+42.4 - STA 17+79.9 RT

900.640 SPECIAL PROVISION (STEEL BEAM GUARDRAIL, WEATHERING)
 HANCOCK:
 STA 6+00.0 - STA 17+42.4 RT (1142.4 LF)

PAVEMENT CORES = ●

#	TOTAL PCC COMMENTS	DEPTH (INCH)
8	3 1/2"	NO

AREA TO BE RECLAIMED

SIGN LEGEND
 R = REMOVE
 S = SALVAGE
 N = NEW
 RET = RETAIN
 B-B = BACK TO BACK
 EXISTING = - - - - -
 NEW = _____

- NOTES:
- PAVE THE ENTIRE EXISTING GRAVEL PULLOUT WITH 1 1/2" TYPE IVS. ANY REQUIRED EXCAVATION SHALL BE PERFORMED AS DIRECTED BY THE RESIDENT ENGINEER AND PAID FOR UNDER ITEM 608.25 ALL PURPOSE EXCAVATOR RENTAL, TYPE I.
 - ITEM 631.10 STONE FILL, TYPE I SHALL BE PLACED ALONG THE EXISTING SIDE SLOPE AS DIRECTED BY THE RESIDENT ENGINEER.

NOT TO SCALE

PROJECT LAYOUT SHEET #25	PROJECT NAME: RIPTON - HANCOCK	PLOT DATE: 19-SEP-2013 11:16
	PROJECT NUMBER: STP 2803(1)	DRAWN BY: C.A.K.
	FILE NAME: p08cl60.dgn	CHECKED BY: D.W.E.
	PROJECT LEADER: D.E.G.	SHEET 84 OF 114
	DESIGNED BY: M.J.M.	
	IPARM FILE: p08cl60i25.i	