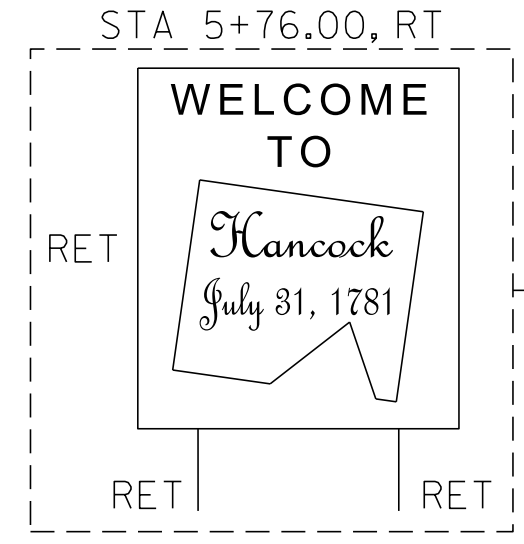
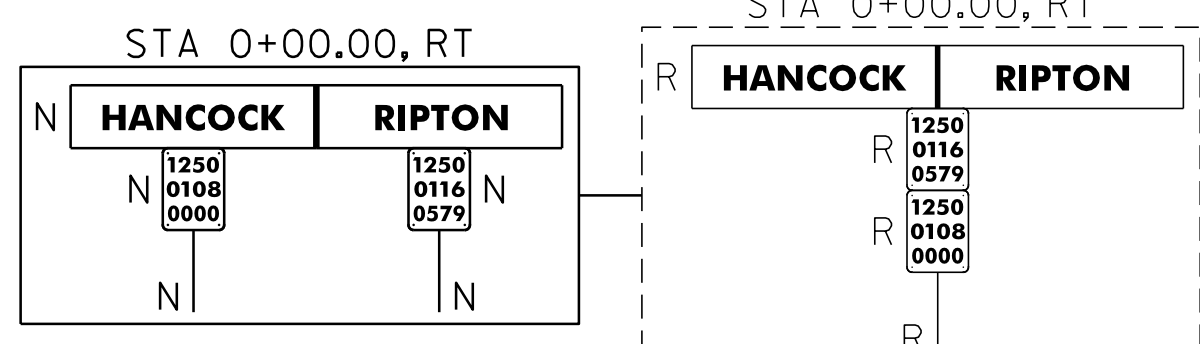
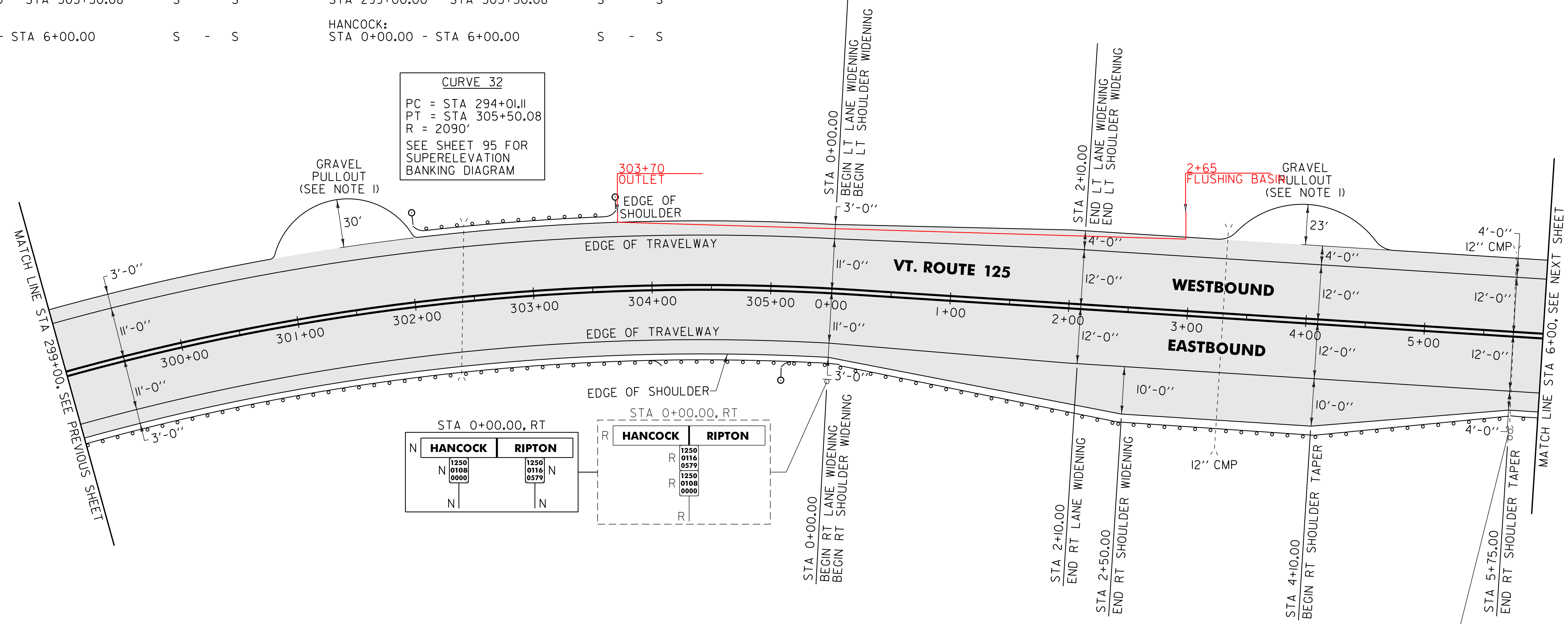


646.402 DURABLE 4 INCH WHITE LINE, THERMOPLASTIC
(ALL LINES WILL INCLUDE EDGE LINE BREAKS AND RADIUS FOR TOWN HIGHWAYS)
RIPTON:
STA 299+00.00 - STA 305+50.08 EDGE LINE LT & RT
HANCOCK:
STA 0+00.00 - STA 6+00.00 EDGE LINE LT & RT
646.412 DURABLE 4 INCH YELLOW LINE, THERMOPLASTIC
(ALL LINES WILL INCLUDE C/L BREAKS FOR TOWN HIGHWAYS) S=SOLID, D=DASHED
RIPTON:
STA 299+00.00 - STA 305+50.08 LT & RT S - S
HANCOCK:
STA 0+00.00 - STA 6+00.00 S - S

646.602 TEMPORARY 4 INCH WHITE LINE, PAINT
(ALL LINES WILL INCLUDE EDGE LINE BREAKS AND RADIUS FOR TOWN HIGHWAYS)
RIPTON:
STA 299+00.00 - STA 305+50.08 EDGE LINE LT & RT
HANCOCK:
STA 0+00.00 - STA 6+00.00 EDGE LINE LT & RT
646.612 TEMPORARY 4 INCH YELLOW LINE, PAINT
(ALL LINES WILL INCLUDE C/L BREAKS FOR TOWN HIGHWAYS) S=SOLID, D=DASHED
RIPTON:
STA 299+00.00 - STA 305+50.08 LT & RT S - S
HANCOCK:
STA 0+00.00 - STA 6+00.00 S - S

MM 5.786 = STA 305+50.08
MM 0.000 = STA 0+00.00
RIPTON HANCOCK

CURVE 32
PC = STA 294+01.11
PT = STA 305+50.08
R = 2090'
SEE SHEET 95 FOR SUPERELEVATION BANKING DIAGRAM



616.35 TREATED TIMBER CURB
RIPTON:
STA 299+20.0 - STA 300+60.0 RT (140.0 LF)
621.80 REMOVAL AND DISPOSAL OF GUARDRAIL
RIPTON:
STA 299+00.0 - STA 303+97.0 RT (397.0 LF)
STA 302+04.0 - STA 303+70.0 LT (166.0 LF)
STA 305+10.1 - STA 305+50.1 RT (40.0 LF)
HANCOCK:
STA 0+00.0 - STA 6+00.0 RT (600.0 LF)
676.10 DELINEATOR WITH STEEL POST
TYPE I WHITE
RIPTON:
STA 301+99.5 LT
STA 303+74.5 LT
STA 305+05.0 RT

900.620 SPECIAL PROVISION (MANUFACTURED TERMINAL SECTION, FLARED/WEATHERING)
RIPTON:
STA 301+99.5 - STA 302+37.0 LT
STA 303+37.0 - STA 303+74.5 LT
~~STA 305+05.0 - STA 305+42.5 RT~~
900.620 SPECIAL PROVISION (MANUFACTURED TERMINAL SECTION, TANGENT/WEATHERING)
~~RIPTON:
STA 303+49.0 - STA 303+99.0 RT~~
900.640 SPECIAL PROVISION (STEEL BEAM GUARDRAIL, WEATHERING)
RIPTON:
STA 299+00.0 - STA 303+49.0 RT (449.0 LF)
STA 302+37.0 - STA 303+37.0 LT (100.0 LF)
STA 305+42.5 - STA 305+50.1 RT (7.6 LF)
HANCOCK:
STA 0+00.0 - STA 6+00.0 RT (600.0 LF)

NOTE:
I. PAVE THE ENTIRE EXISTING GRAVEL PULLOUT WITH 1/2" TYPE IVS. ANY REQUIRED EXCAVATION SHALL BE PERFORMED AS DIRECTED BY THE RESIDENT ENGINEER AND PAID FOR UNDER ITEM 608.25 ALL PURPOSE EXCAVATOR RENTAL, TYPE I.

NOT TO SCALE

| | | |
|---------------------------------|--------------------------------|------------------------------|
| PROJECT LAYOUT SHEET #24 | PROJECT NAME: RIPTON - HANCOCK | PLOT DATE: 19-SEP-2013 11:16 |
| | PROJECT NUMBER: STP 2803(1) | DRAWN BY: C.A.K. |
| | FILE NAME: p08cl60.dgn | CHECKED BY: D.W.E. |
| | PROJECT LEADER: D.E.G. | SHEET 83 OF 114 |
| | DESIGNED BY: M.J.M. | |
| | IPARM FILE: p08cl60124.i | |

AREA TO BE RECLAIMED

SIGN LEGEND
R = REMOVE
S = SALVAGE
N = NEW
RET = RETAIN
B-B = BACK TO BACK
EXISTING = -----
NEW = _____