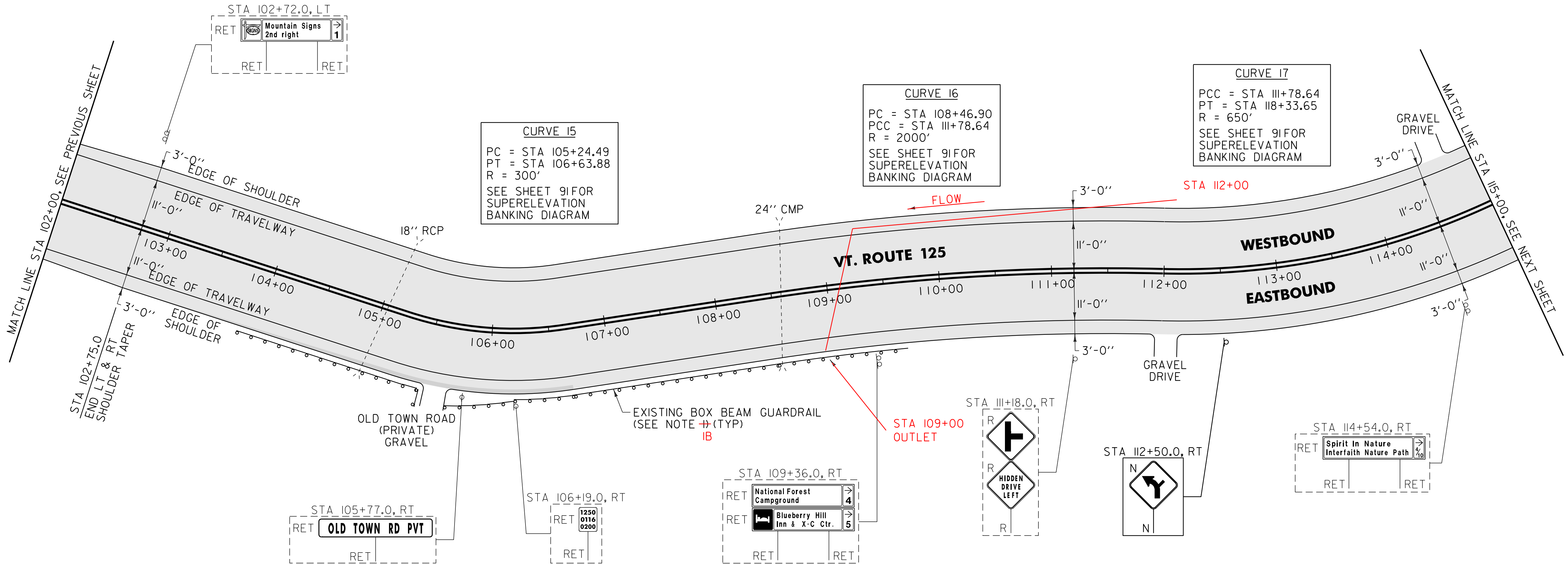


646.402 DURABLE 4 INCH WHITE LINE, THERMOPLASTIC
(ALL LINES WILL INCLUDE EDGE LINE BREAKS AND RADIUS FOR TOWN HIGHWAYS)
RIPTON:
STA 102+00.00 - STA 115+00.00 EDGE LINE LT & RT
646.412 DURABLE 4 INCH YELLOW LINE, THERMOPLASTIC
(ALL LINES WILL INCLUDE C/L BREAKS FOR TOWN HIGHWAYS) S=SOLID, D=DASHED
RIPTON:
STA 102+00.00 - STA 115+00.00 LT C RT
S - S

646.602 TEMPORARY 4 INCH WHITE LINE, PAINT
(ALL LINES WILL INCLUDE EDGE LINE BREAKS AND RADIUS FOR TOWN HIGHWAYS)
RIPTON:
STA 102+00.00 - STA 115+00.00 EDGE LINE LT & RT
646.612 TEMPORARY 4 INCH YELLOW LINE, PAINT
(ALL LINES WILL INCLUDE C/L BREAKS FOR TOWN HIGHWAYS) S=SOLID, D=DASHED
RIPTON:
STA 102+00.00 - STA 115+00.00 LT C RT
S - S



NOTE:

~~THE CONTRACTOR SHALL REPAIR AND/OR MAKE HEIGHT ALTERATIONS PER SUBSECTION 621.13 OF THE STANDARD SPECIFICATIONS AS DIRECTED BY THE RESIDENT ENGINEER BETWEEN RIPTON STA 103+83 TO STA 105+50 RT AND STA 106+19 TO STA 109+67. ALL WORK SHALL BE PAID FOR UNDER ITEM 900.640 SPECIAL PROVISION (BOX BEAM GUARDRAIL REPAIRS, WEATHERING). AN ESTIMATED QUANTITY FOR THIS ITEM HAS BEEN INCLUDED IN THE PLAN SET. SEE SHEET 9 FOR AVAILABLE BOX BEAM GUARDRAIL INVENTORY.~~

IB REFERENCE SHEET 31 OF 114 NOTE (IB).
STA 103+83 LT TO 105+50 LT
STA 105+75 LT TO 109+67 LT

SIGN LEGEND
R = REMOVE
S = SALVAGE
N = NEW
RET = RETAIN
B-B = BACK TO BACK
EXISTING = _____
NEW = _____

NOT TO SCALE

PROJECT LAYOUT SHEET #9	PROJECT NAME: RIPTON - HANCOCK	PLOT DATE: 19-SEP-2013 11:15
	PROJECT NUMBER: STP 2803(1)	DRAWN BY: C.A.K.
	FILE NAME: p08cl60.dgn	CHECKED BY: D.W.E.
	DESIGNED BY: M.J.M.	SHEET 68 OF 114
	IPARM FILE: p08cl60109.i	

AREA TO BE RECLAIMED