

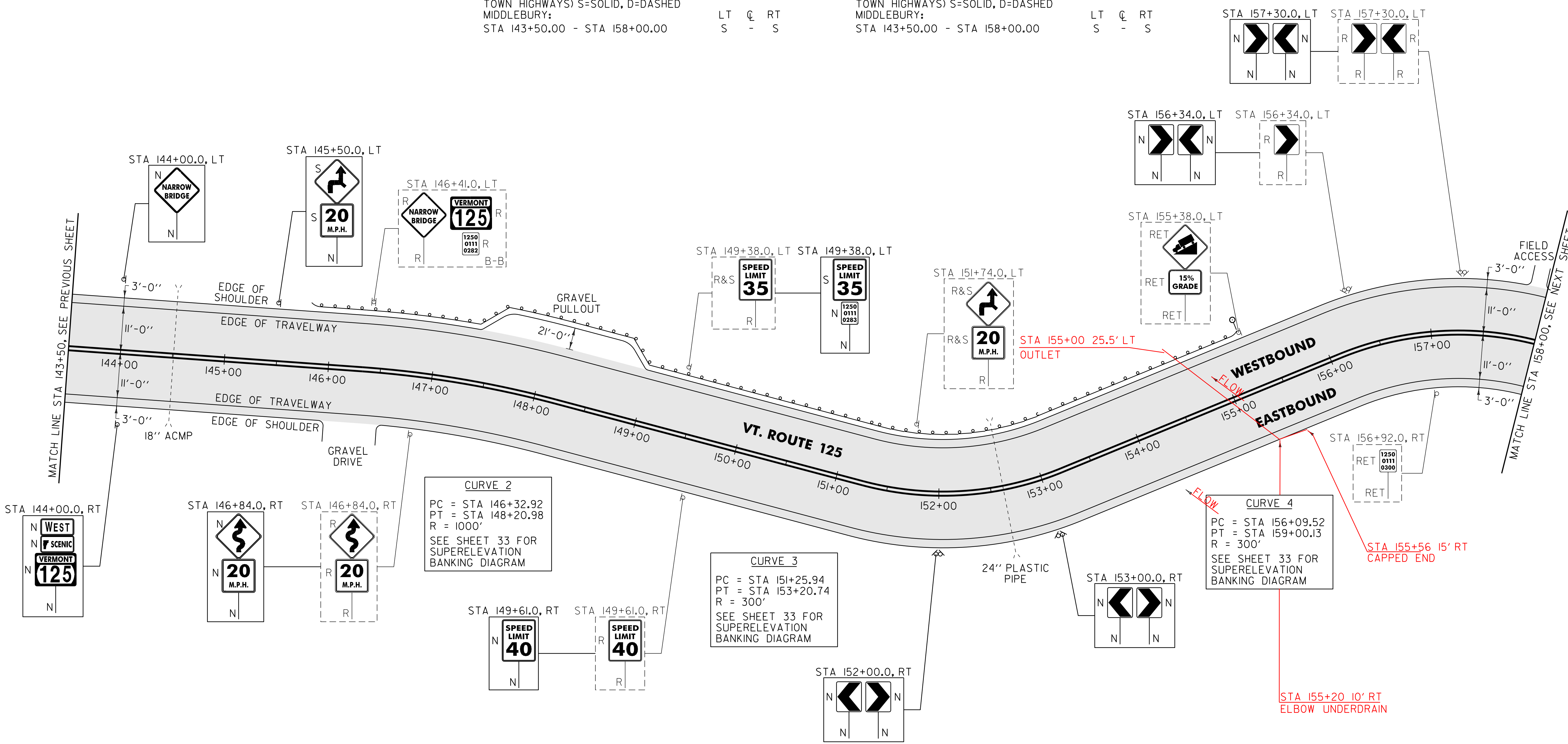
646.402 DURABLE 4 INCH WHITE LINE, THERMOPLASTIC
 (ALL LINES WILL INCLUDE EDGE LINE BREAKS AND RADIUS FOR TOWN HIGHWAYS)
 MIDDLEBURY:
 STA 143+50.00 - STA 158+00.00 EDGE LINE LT & RT

646.412 DURABLE 4 INCH YELLOW LINE, THERMOPLASTIC
 (ALL LINES WILL INCLUDE C/L BREAKS FOR TOWN HIGHWAYS) S=SOLID, D=DASHED
 MIDDLEBURY:
 STA 143+50.00 - STA 158+00.00 LT ☉ RT
 S - S

646.602 TEMPORARY 4 INCH WHITE LINE, PAINT
 (ALL LINES WILL INCLUDE EDGE LINE BREAKS AND RADIUS FOR TOWN HIGHWAYS)
 MIDDLEBURY:
 STA 143+50.00 - STA 158+00.00 EDGE LINE LT & RT

646.612 TEMPORARY 4 INCH YELLOW LINE, PAINT
 (ALL LINES WILL INCLUDE C/L BREAKS FOR TOWN HIGHWAYS) S=SOLID, D=DASHED
 MIDDLEBURY:
 STA 143+50.00 - STA 158+00.00 LT ☉ RT
 S - S

675.50 REMOVING SIGNS AS SHOWN - 12
 675.60 ERECTING SALVAGED SIGNS AS SHOWN - 3



AREA TO BE RECLAIMED

621.60 ANCHOR FOR STEEL BEAM GUARDRAIL
 MIDDLEBURY:
 STA 145+88.0 LT
 STA 146+48.0 LT

621.20 STEEL BEAM GUARDRAIL, GALVANIZED
 MIDDLEBURY:
 STA 145+88.0 - STA 155+00.5 LT (937.5 LF)

621.50 MANUFACTURED TERMINAL SECTION, FLARED
 MIDDLEBURY:
 STA 155+00.5 - STA 155+38.0 LT

601.0910 15 INCH CPEP
 MIDDLEBURY:
 STA 145+88.0 LT

621.80 REMOVAL AND DISPOSAL OF GUARDRAIL
 MIDDLEBURY:
 STA 145+90.0 - STA 155+38.0 LT (948.0 LF)

676.10 DELINEATOR WITH STEEL POST
 MIDDLEBURY:
 STA 155+38.0 LT

NOTE:
 1. PAVE THE ENTIRE EXISTING GRAVEL PULLOUT WITH TYPE IVS. ANY REQUIRED EXCAVATION SHALL BE PERFORMED AS DIRECTED BY THE RESIDENT ENGINEER AND PAID FOR UNDER ITEM 608.25 ALL PURPOSE EXCAVATOR RENTAL, TYPE I.

SIGN LEGEND
 R = REMOVE
 S = SALVAGE
 N = NEW
 RET = RETAIN
 B-B = BACK TO BACK
 EXISTING = -----
 NEW = _____

NOT TO SCALE

PROJECT LAYOUT SHEET #8	PROJECT NAME: MIDDLEBURY	PLOT DATE: 19-SEP-2013 11:14
	PROJECT NUMBER: STP 2627(1)	DRAWN BY: C.A.K.
	FILE NAME: p06c222.dgn	CHECKED BY: D.W.E.
	PROJECT LEADER: D.E.G.	SHEET 27 OF 114
	DESIGNED BY: M.J.L.	
	IPARM FILE: p06c222108.1	