

646.402 DURABLE 4 INCH WHITE LINE, THERMOPLASTIC
 (ALL LINES WILL INCLUDE EDGE LINE BREAKS AND RADIUS FOR TOWN HIGHWAYS)
 MIDDLEBURY:
 STA 86+50.00 - STA 100+50.00 EDGE LINE LT & RT

646.412 DURABLE 4 INCH YELLOW LINE, THERMOPLASTIC
 (ALL LINES WILL INCLUDE C/L BREAKS FOR TOWN HIGHWAYS) S=SOLID, D=DASHED
 MIDDLEBURY:
 STA 86+50.00 - STA 100+50.00 S - S
 STA 91+50.24 DOUBLE SOLID RT, OSSIE ROAD
 STA 97+89.12 DOUBLE SOLID LT, TH-29

646.602 TEMPORARY 4 INCH WHITE LINE, PAINT
 (ALL LINES WILL INCLUDE EDGE LINE BREAKS AND RADIUS FOR TOWN HIGHWAYS)
 MIDDLEBURY:
 STA 86+50.00 - STA 100+50.00 EDGE LINE LT & RT

646.612 TEMPORARY 4 INCH YELLOW LINE, PAINT
 (ALL LINES WILL INCLUDE C/L BREAKS FOR TOWN HIGHWAYS) S=SOLID, D=DASHED
 MIDDLEBURY:
 STA 86+50.00 - STA 100+50.00 S - S
 STA 91+50.24 DOUBLE SOLID RT, OSSIE ROAD
 STA 97+89.12 DOUBLE SOLID LT, TH-29

646.442 DURABLE 8 INCH WHITE LINE, THERMOPLASTIC
 MIDDLEBURY:
 STA 92+18.0 - STA 92+30.0 FIRE HYDRANT, NO PARKING, RT
 STA 100+29.0 - STA 100+41.0 FIRE HYDRANT, NO PARKING, RT

646.482 DURABLE 24 INCH STOP BAR, THERMOPLASTIC
 MIDDLEBURY:
 STA 91+50.24 RT, OSSIE ROAD
 STA 97+89.12 LT, TH-29

646.682 TEMPORARY 24 INCH STOP BAR, PAINT
 MIDDLEBURY:
 STA 91+50.24 RT, OSSIE ROAD
 STA 97+89.12 LT, TH-29

646.492 DURABLE LETTER OR SYMBOL, THERMOPLASTIC
 MIDDLEBURY:
 STA 90+41.80 LT, "A,H,E,A,D" (5 EA)
 STA 90+82.20 LT, "S,T,O,P" (4 EA)
 STA 91+50.24 RT, OSSIE ROAD "S,T,O,P" (4 EA)
 STA 97+89.12 LT, TH-29 "S,T,O,P" (4 EA)

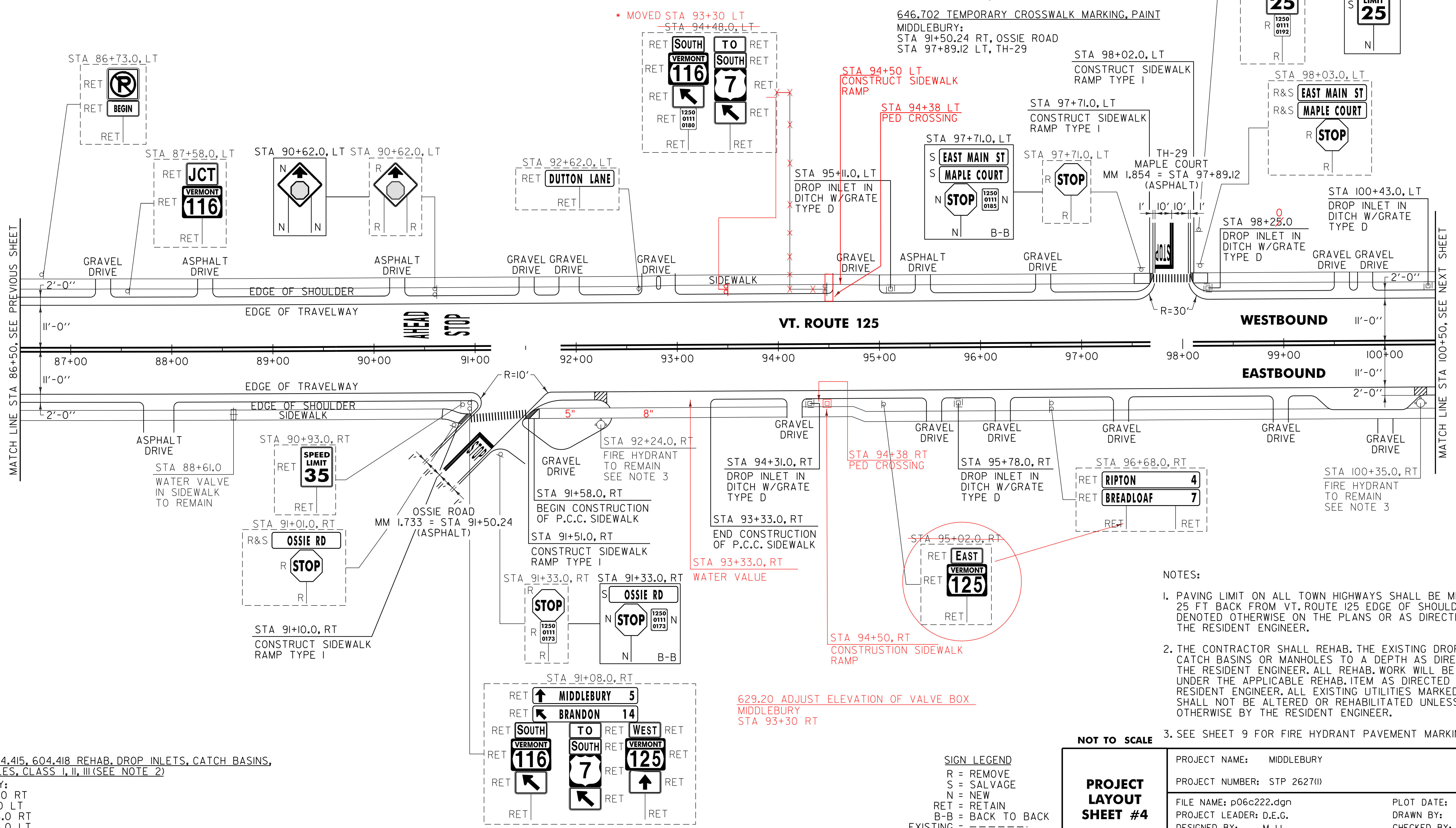
646.692 TEMPORARY LETTER OR SYMBOL, PAINT
 MIDDLEBURY:
 STA 90+41.80 LT, "A,H,E,A,D" (5 EA)
 STA 90+82.20 LT, "S,T,O,P" (4 EA)
 STA 91+50.24 RT, OSSIE ROAD "S,T,O,P" (4 EA)
 STA 97+89.12 LT, TH-29 "S,T,O,P" (4 EA)

646.502 DURABLE CROSSWALK MARKING, THERMOPLASTIC
 MIDDLEBURY:
 STA 91+50.24 RT, OSSIE ROAD
 STA 97+89.12 LT, TH-29

646.702 TEMPORARY CROSSWALK MARKING, PAINT
 MIDDLEBURY:
 STA 91+50.24 RT, OSSIE ROAD
 STA 97+89.12 LT, TH-29

675.50 REMOVING SIGNS AS SHOWN - 12

675.60 ERECTING SALVAGED SIGNS AS SHOWN - 4



604.412, 604.415, 604.418 REHAB, DROP INLETS, CATCH BASINS, OR MANHOLES, CLASS I, II, III (SEE NOTE 2)
 MIDDLEBURY:
 STA 94+31.0 RT
 STA 95+11.0 LT
 STA 95+78.0 RT
 STA 98+25.0 LT
 STA 100+43.0 LT

- NOTES:
- PAVING LIMIT ON ALL TOWN HIGHWAYS SHALL BE MEASURED 25 FT BACK FROM VT. ROUTE 125 EDGE OF SHOULDER UNLESS DENOTED OTHERWISE ON THE PLANS OR AS DIRECTED BY THE RESIDENT ENGINEER.
 - THE CONTRACTOR SHALL REHAB. THE EXISTING DROP INLETS, CATCH BASINS OR MANHOLES TO A DEPTH AS DIRECTED BY THE RESIDENT ENGINEER. ALL REHAB. WORK WILL BE PAID FOR UNDER THE APPLICABLE REHAB. ITEM AS DIRECTED BY THE RESIDENT ENGINEER. ALL EXISTING UTILITIES MARKED "TO REMAIN" SHALL NOT BE ALTERED OR REHABILITATED UNLESS DIRECTED OTHERWISE BY THE RESIDENT ENGINEER.
 - SEE SHEET 9 FOR FIRE HYDRANT PAVEMENT MARKING DETAIL.

NOT TO SCALE

PROJECT LAYOUT SHEET #4	PROJECT NAME: MIDDLEBURY	PLOT DATE: 19-SEP-2013 11:14
	PROJECT NUMBER: STP 2627(1)	DRAWN BY: C.A.K.
	FILE NAME: p06c222.dgn	CHECKED BY: D.W.E.
	PROJECT LEADER: D.E.G.	SHEET 23 OF 114
	DESIGNED BY: M.J.L.	
	IPARM FILE: p06c222104.1	

SIGN LEGEND
 R = REMOVE
 S = SALVAGE
 N = NEW
 RET = RETAIN
 B-B = BACK TO BACK
 EXISTING = - - - - -
 NEW = _____