

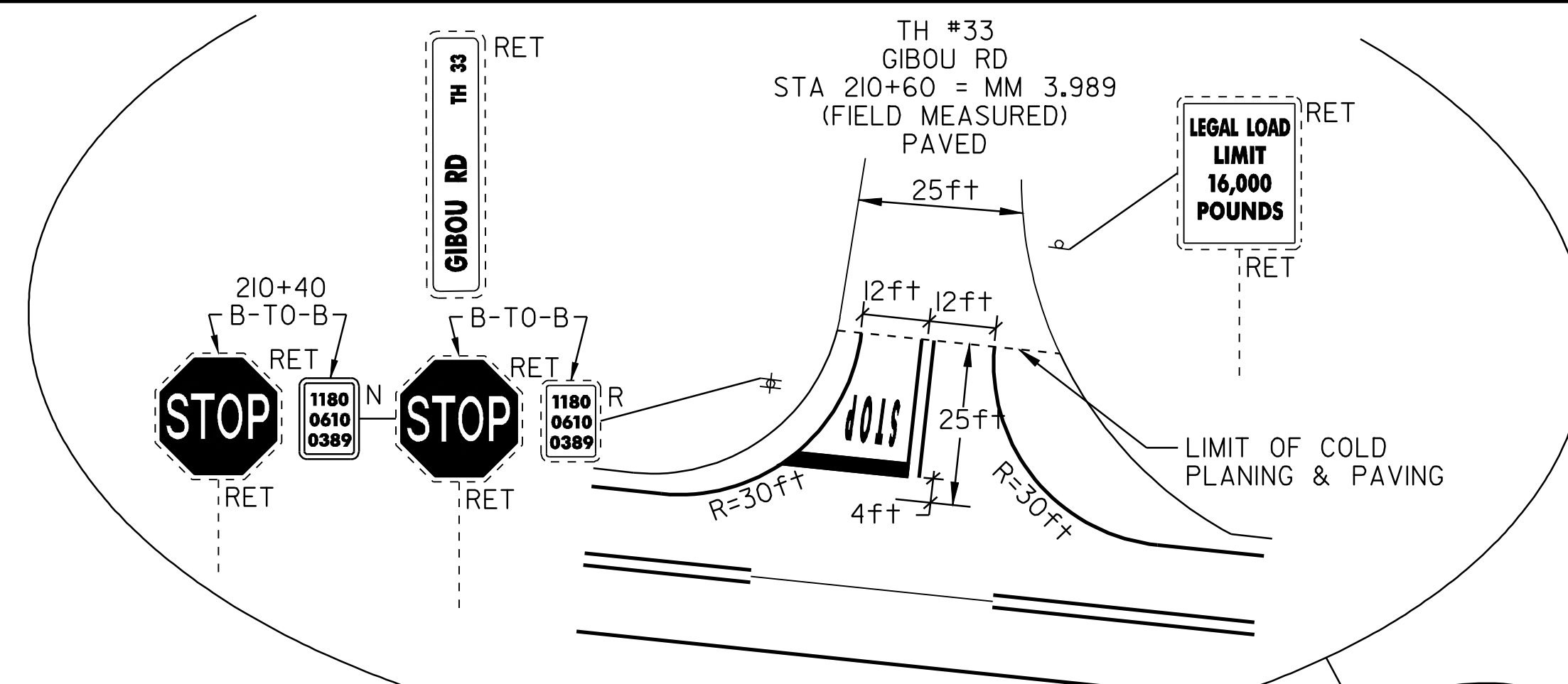
TEMPORARY 4in YELLOW LINE (PAINT)
DURABLE 4in YELLOW LINE (THERMOPLASTIC)
STA 200+00 TO 246+00 SOLID LT&RT
STA 210+60 DOUBLE SOLID LT
(WITH CENTERLINE BREAKS FOR TOWN HIGHWAYS)

TEMPORARY 4in WHITE LINE (PAINT)
DURABLE 4in WHITE LINE (THERMOPLASTIC)
STA 200+00 TO 246+00 SOLID LT&RT
(WITH EDGELINE BREAKS FOR TOWN HIGHWAYS)

TEMPORARY AND DURABLE 24in STOP BAR
STA 210+60 LT GIBOU RD

TEMPORARY AND DURABLE LETTER OR SYMBOL
STA 210+60 LT "STOP"

REMOVING SIGNS
8



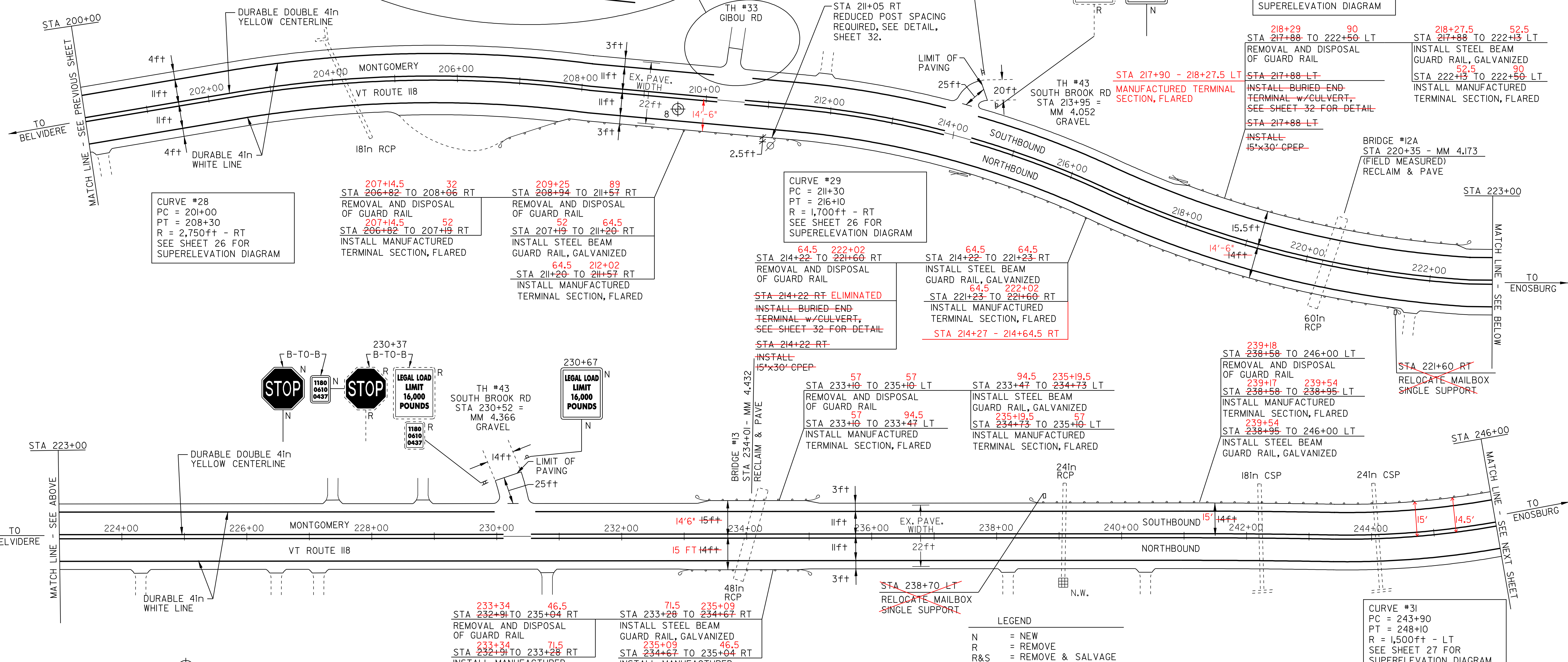
DITCHING LOCATIONS (REFER TO SHEET 8 FOR DETAILS)

STA 211+60 TO 214+10 RT
222+42 STA 221+80 TO 232+70 RT
STA 235+10 TO 238+50 LT
STA 235+00 TO 239+00 RT
242+89

STA 201+84 - 203+55 LT
STA 202+11 - 204+23 RT
STA 214+00 - 216+00 RT
STA 214+00 - 217+00 LT

RELOCATE MAILBOX, SINGLE SUPPORT
STA 221+60 RT - 1
STA 238+70 LT - 1

STONE FILL DITCH
STA 203+45 - 208+18 LT
STA 204+23 - 204+54 RT
STA 223+02 - 225+60 LT
STA 242+89 - 245+05 RT



CURVE #28
PC = 201+00
PT = 208+30
R = 2,750ft - RT
SEE SHEET 26 FOR SUPERELEVATION DIAGRAM

207+14.5 32
STA 206+82 TO 208+06 RT
REMOVAL AND DISPOSAL OF GUARD RAIL
207+14.5 52
STA 206+82 TO 207+19 RT
INSTALL MANUFACTURED TERMINAL SECTION, FLARED

209+25 89
STA 208+94 TO 211+57 RT
REMOVAL AND DISPOSAL OF GUARD RAIL
207+19 64.5
STA 207+19 TO 211+20 RT
INSTALL STEEL BEAM GUARD RAIL, GALVANIZED
212+02 64.5
STA 211+20 TO 211+57 RT
INSTALL MANUFACTURED TERMINAL SECTION, FLARED

CURVE #29
PC = 211+30
PT = 216+10
R = 1,700ft - RT
SEE SHEET 26 FOR SUPERELEVATION DIAGRAM

64.5 222+02
STA 214+22 TO 221+60 RT
REMOVAL AND DISPOSAL OF GUARD RAIL
STA 214+22 RT ELIMINATED
INSTALL BURIED END TERMINAL w/ CULVERT, SEE SHEET 32 FOR DETAIL
STA 214+22 RT
INSTALL 15'x30' CPEP

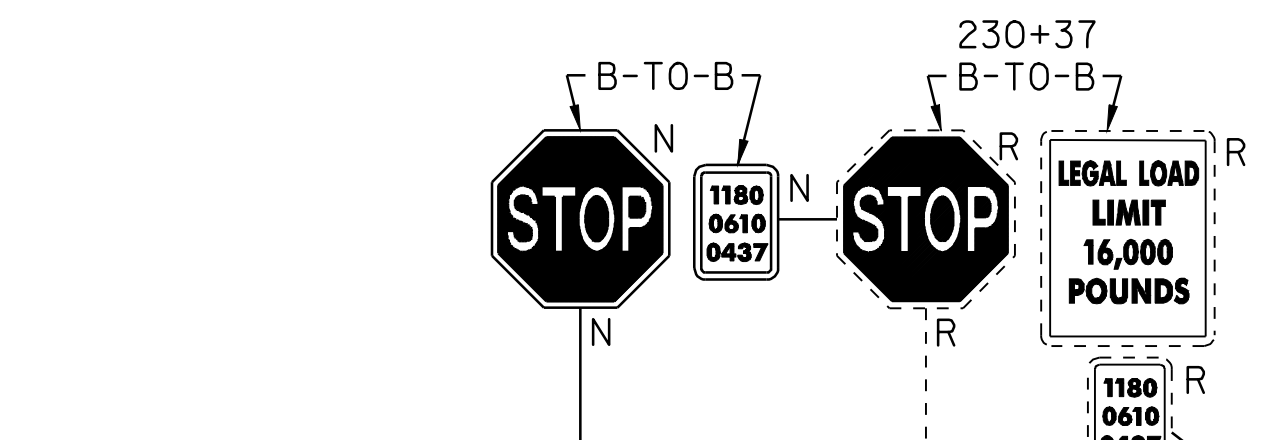
64.5 64.5
STA 214+22 TO 221+23 RT
INSTALL STEEL BEAM GUARD RAIL, GALVANIZED
64.5 222+02
STA 221+23 TO 221+60 RT
INSTALL MANUFACTURED TERMINAL SECTION, FLARED
STA 214+27 - 214+64.5 RT

STA 217+90 - 218+27.5 LT
MANUFACTURED TERMINAL SECTION, FLARED

CURVE #30
PC = 217+50
PT = 224+70
R = 2,000ft - LT
SEE SHEET 26 FOR SUPERELEVATION DIAGRAM

218+29 90
STA 217+88 TO 222+50 LT
REMOVAL AND DISPOSAL OF GUARD RAIL
218+27.5 52.5
STA 217+88 TO 222+13 LT
INSTALL STEEL BEAM GUARD RAIL, GALVANIZED
52.5 90
STA 222+13 TO 222+50 LT
INSTALL MANUFACTURED TERMINAL SECTION, FLARED
217+88 LT
INSTALL BURIED END TERMINAL w/ CULVERT, SEE SHEET 32 FOR DETAIL
217+88 LT
INSTALL 15'x30' CPEP

BRIDGE #12A
STA 220+35 - MM 4.173
(FIELD MEASURED)
RECLAIM & PAVE



TH #43
SOUTH BROOK RD
STA 230+52 = MM 4.366 GRAVEL

57 57
STA 233+10 TO 235+10 LT
REMOVAL AND DISPOSAL OF GUARD RAIL
57 94.5
STA 233+10 TO 233+47 LT
INSTALL MANUFACTURED TERMINAL SECTION, FLARED

94.5 235+19.5
STA 233+47 TO 234+73 LT
INSTALL STEEL BEAM GUARD RAIL, GALVANIZED
235+19.5 57
STA 234+73 TO 235+10 LT
INSTALL MANUFACTURED TERMINAL SECTION, FLARED

239+18
STA 238+58 TO 246+00 LT
REMOVAL AND DISPOSAL OF GUARD RAIL
239+17 239+54
STA 238+58 TO 238+95 LT
INSTALL MANUFACTURED TERMINAL SECTION, FLARED
239+54
STA 238+95 TO 246+00 LT
INSTALL STEEL BEAM GUARD RAIL, GALVANIZED

STA 221+60 RT
RELOCATE MAILBOX SINGLE SUPPORT

PAVEMENT CORES -

#	TOTAL DEPTH (in)	SOLID CORE	DRAINABLE BASE	COMMENTS
8	3.0	NO	NO	RUTTING

NOTE:
- NO PCC UNDER ANY CORES
- NO CORES OVER ASPHALTED
- NO SHOULDER CORES

REMOVAL AND DISPOSAL OF GUARD RAIL	MANUFACTURED TERMINAL SECTION, FLARED	STEEL BEAM GUARD RAIL, GALVANIZED
207+14.5 STA 206+82 TO 208+06 RT 32	207+14.5 STA 206+82 TO 207+19 RT 52	52 STA 207+19 TO 211+20 RT 64.5
209+25 STA 208+94 TO 211+57 RT 89	64.5 STA 211+20 TO 211+57 RT 212+02	27 STA 214+22 TO 221+23 RT 64.5
64.5 STA 214+22 TO 221+60 RT 222+02	64.5 STA 221+23 TO 221+60 RT 222+02	218+27.5 STA 217+88 TO 222+13 LT 52.5
218+29 STA 217+88 TO 222+50 LT 90	52.5 STA 222+13 TO 222+50 LT 90	71.5 STA 233+28 TO 234+67 RT 235+09
233+34 STA 232+91 TO 235+04 RT 46.5	233+34 STA 232+91 TO 233+28 RT 71.5	94.5 STA 233+47 TO 234+73 LT 235+19.5
57 STA 233+10 TO 235+10 LT 57	57 STA 233+10 TO 233+47 LT 94.5	239+54 STA 238+95 TO 246+00 LT
239+18 STA 238+58 TO 246+00 LT	235+09 STA 234+67 TO 235+04 RT 46.5	
	235+19.5 STA 234+73 TO 235+10 LT 57	
	239+18 STA 238+58 TO 239+95 LT 239+54	
	STA 214+27 - 214+64.5 RT	
	STA 217+90 - 218+27.5 LT	

LEGEND

N = NEW
R = REMOVE
R&S = REMOVE & SALVAGE
S = SALVAGE
RET = RETAIN
B-T-O-B = BACK TO BACK

⊕ □ □ CATCH BASIN/DI
⊕ □ □ EXISTING THROAT DI
(N.W.) NO WORK REQUIRED (TYP. FOR W.V.'S, C.S.'S, D.I.'S, C.B.'S WHERE NOTED)

⊕ YIELDING MARKER POST
⊕ UTILITY POLE
⊕ DRIVE

CURVE #31
PC = 243+90
PT = 248+10
R = 1,500ft - LT
SEE SHEET 27 FOR SUPERELEVATION DIAGRAM

PAVING PROJECT LAYOUT SHEET #8

DESIGNED BY BCE/PJM DATE 6-07

DRAWN BY C.E.A., INC. DATE 6-07

DESIGN FILE NO. p06cl62.dgn

PRF FILE p06cl62pp8.i DATE PLOTTED 03-NOV-2009

PROJ. NAME **BELVIDERE - MONTGOMERY**

PROJ. NO. **STP 2619(1)S**

SHEET **16** OF **33** SHEETS