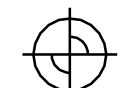


TEMPORARY 4in YELLOW LINE (PAINT)  
DURABLE 4in YELLOW LINE (THERMOPLASTIC)

TOWN OF BELVIDERE  
STA 121+00 TO 149+37-33  
STA 149+37-33 TO 154+23  
STA 121+00 TO 121+10  
TOWN OF MONTGOMERY  
STA 0+00 TO 1+57-52  
52 STA 1+57 TO 2+36-88  
88 STA 2+36 TO 8+98-9+08  
STA 8+98 TO 13+00  
9+08

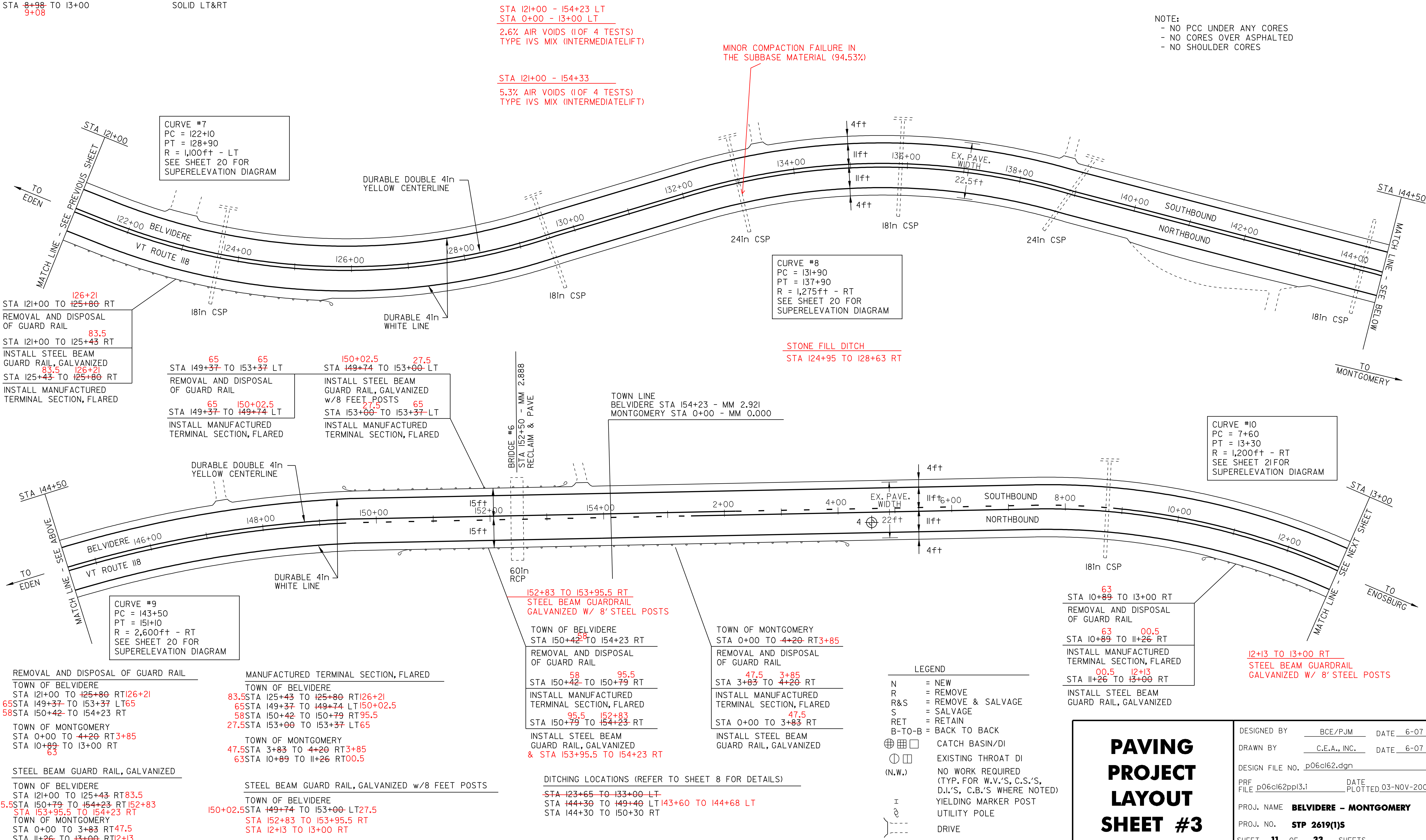
TEMPORARY 4in WHITE LINE (PAINT)  
DURABLE 4in WHITE LINE (THERMOPLASTIC)

TOWN OF BELVIDERE  
STA 121+00 TO 154+23  
TOWN OF MONTGOMERY  
STA 0+00 TO 13+00

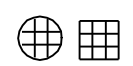



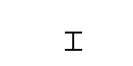
PAVEMENT CORES - 

#	TOTAL DEPTH (in)	SOLID CORE	DRAINABLE BASE	COMMENTS
4	7.0	YES	YES	LITTLE RUT, LEVELED

NOTE:  
- NO PCC UNDER ANY CORES  
- NO CORES OVER ASPHALTED  
- NO SHOULDER CORES



LEGEND

N	= NEW
R	= REMOVE
R&S	= REMOVE & SALVAGE
S	= SALVAGE
RET	= RETAIN
B-TO-B	= BACK TO BACK
	CATCH BASIN/DI
	EXISTING THROAT DI
(N.W.)	NO WORK REQUIRED (TYP. FOR W.V.'S, C.S.'S, D.I.'S, C.B.'S WHERE NOTED)
	YIELDING MARKER POST
	UTILITY POLE
	DRIVE

## PAVING PROJECT LAYOUT SHEET #3

DESIGNED BY	BCE/PJM	DATE	6-07
DRAWN BY	C.E.A., INC.	DATE	6-07
DESIGN FILE NO.	p06cl62.dgn		
PRF FILE	p06cl62pp13.i	DATE PLOTTED	03-NOV-2009
PROJ. NAME	BELVIDERE - MONTGOMERY		
PROJ. NO.	STP 2619(1)S		
SHEET	11	OF	33 SHEETS

REMOVAL AND DISPOSAL OF GUARD RAIL  
TOWN OF BELVIDERE  
STA 121+00 TO 125+80 RT 126+21  
65 STA 149+37 TO 153+37 LT 65  
58 STA 150+42 TO 154+23 RT  
TOWN OF MONTGOMERY  
STA 0+00 TO 4+20 RT 3+85  
STA 10+89 TO 13+00 RT 63

MANUFACTURED TERMINAL SECTION, FLARED  
TOWN OF BELVIDERE  
83.5 STA 125+43 TO 125+80 RT 126+21  
65 STA 149+37 TO 149+74 LT 150+02.5  
58 STA 150+42 TO 150+79 RT 95.5  
27.5 STA 153+00 TO 153+37 LT 65  
TOWN OF MONTGOMERY  
47.5 STA 3+83 TO 4+20 RT 3+85  
63 STA 10+89 TO 11+26 RT 00.5

STEEL BEAM GUARD RAIL, GALVANIZED  
TOWN OF BELVIDERE  
95.5 STA 150+79 TO 154+23 RT 152+83  
STA 153+95.5 TO 154+23 RT  
TOWN OF MONTGOMERY  
STA 0+00 TO 3+83 RT 47.5  
STA 11+26 TO 13+00 RT 12+13 00.5

STEEL BEAM GUARD RAIL, GALVANIZED w/ 8 FEET POSTS  
TOWN OF BELVIDERE  
150+02.5 STA 149+74 TO 153+00 LT 27.5  
STA 152+83 TO 153+95.5 RT  
STA 12+13 TO 13+00 RT

DITCHING LOCATIONS (REFER TO SHEET 8 FOR DETAILS)  
~~STA 123+65 TO 133+00 LT~~  
 STA 144+30 TO 149+40 LT 143+60 TO 144+68 LT  
 STA 144+30 TO 150+30 RT