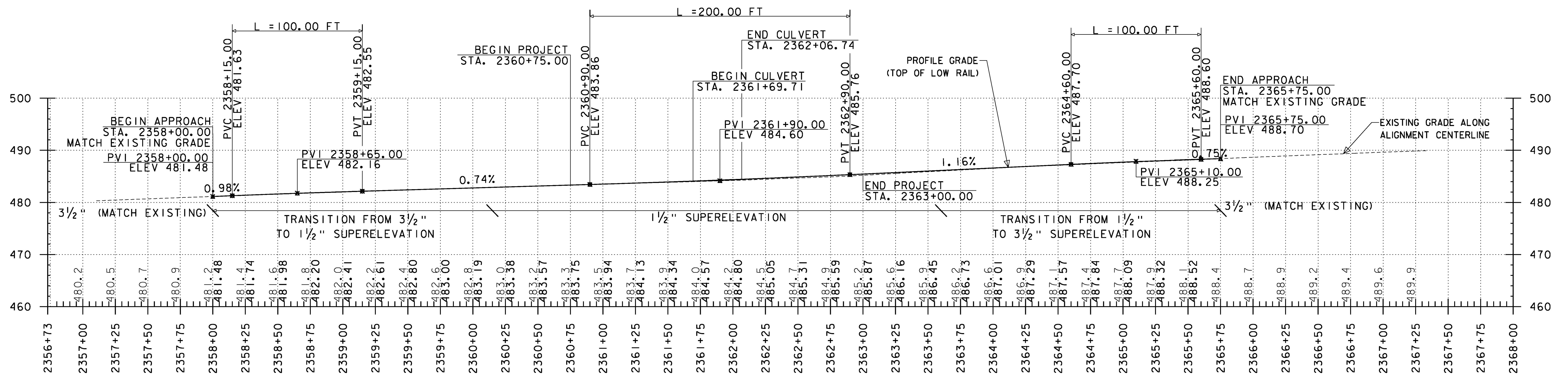


THE GRADES SHOWN TO THE TENTH ARE THE EXISTING GROUND ELEVATIONS ALONG THE NEW ALIGNMENT. THE GRADES SHOWN TO THE NEAREST HUNDREDTH ARE THE PROPOSED GRADES FOR THE NEW ALIGNMENT.

### US ROUTE 5 PROFILE

SCALE: 1" = 40' HORZ.  
1" = 20' VERT.



THE GRADES SHOWN TO THE TENTH ARE THE EXISTING GROUND ELEVATIONS ALONG THE NEW ALIGNMENT. THE GRADES SHOWN TO THE NEAREST HUNDREDTH ARE THE PROPOSED GRADES FOR TOP OF LOW RAIL.

### WACR PROFILE

SCALE: 1" = 40' HORZ.  
1" = 10' VERT.

NOTE: WACR PROFILE SHOWN IS FOR LOW RAIL. EXISTING GRADES ARE THE GROUND ELEVATIONS ALONG ALIGNMENT CENTERLINE.

**RELEASED FOR CONSTRUCTION**

NOVEMBER 24, 2015

PROJECT NAME: RYEGATE  
PROJECT NUMBER: STP CULV(10)



FILE NAME: z06cl56pro.dgn  
PROJECT LEADER: E. DETRICK  
DESIGNED BY: B. BRESLEND  
US ROUTE 5 AND WACR PROFILE SHEET

PLOT DATE: 11/24/2015  
DRAWN BY: B. BRESLEND  
CHECKED BY: E. DETRICK  
SHEET 9 OF 29