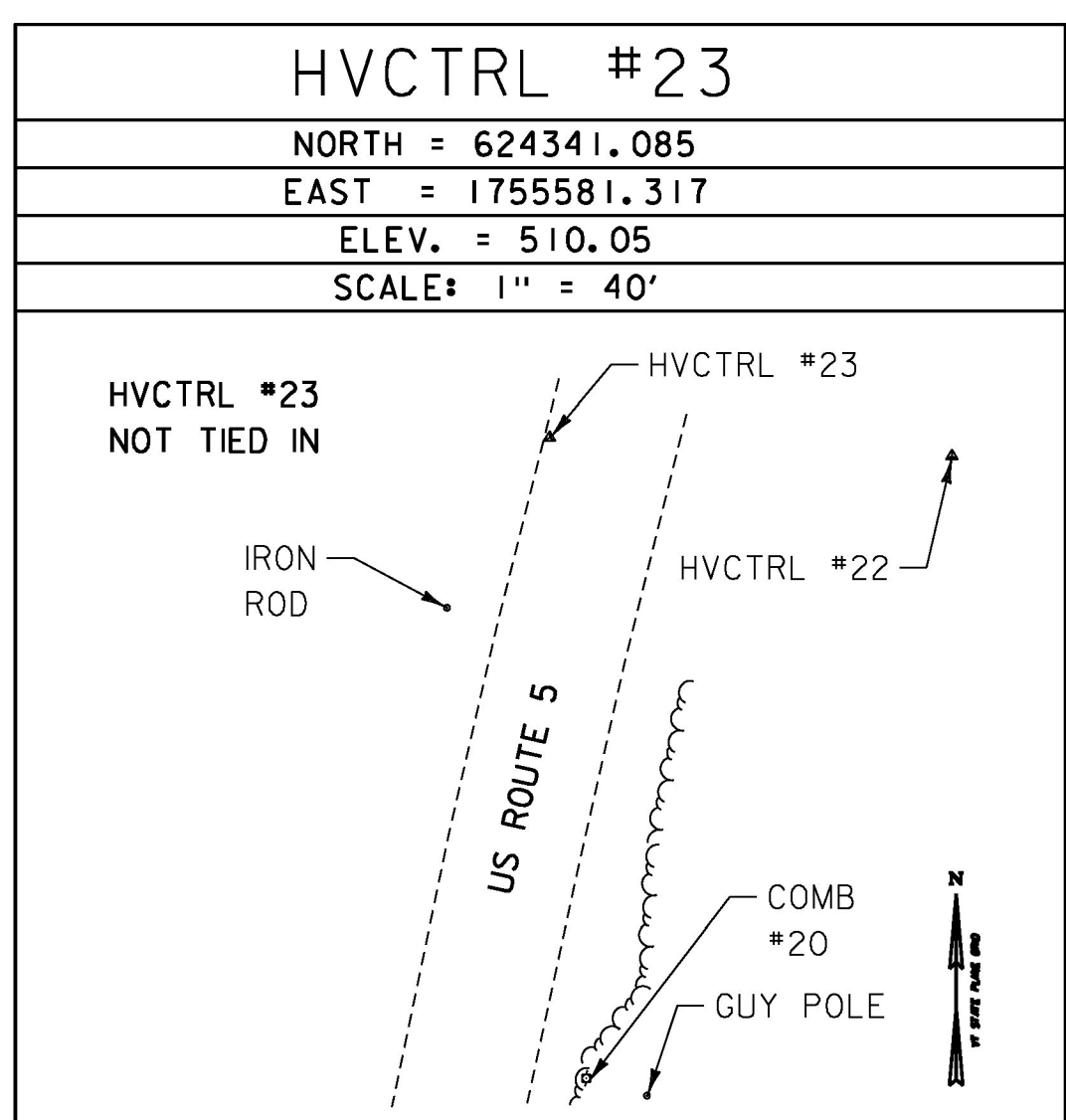
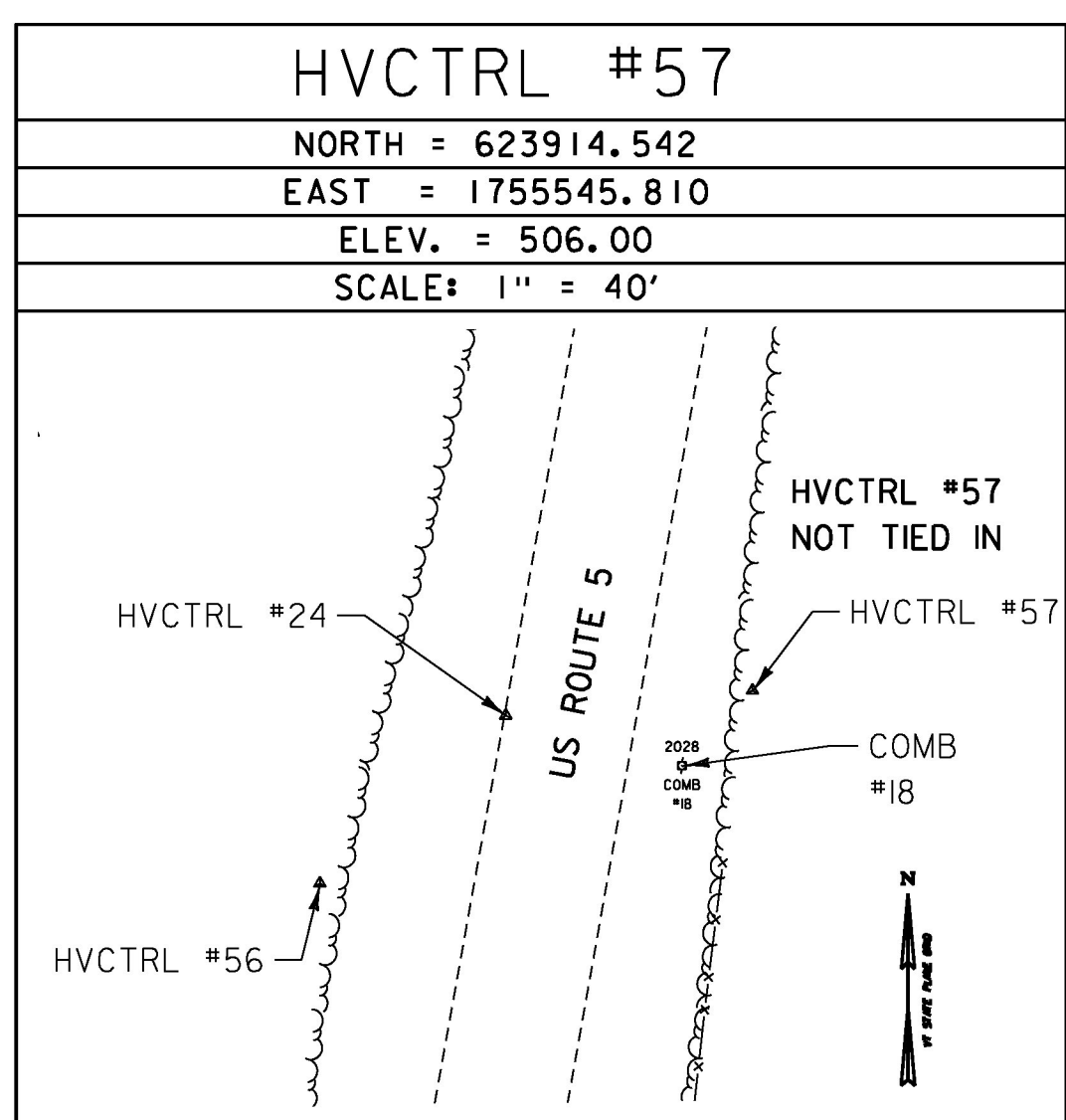
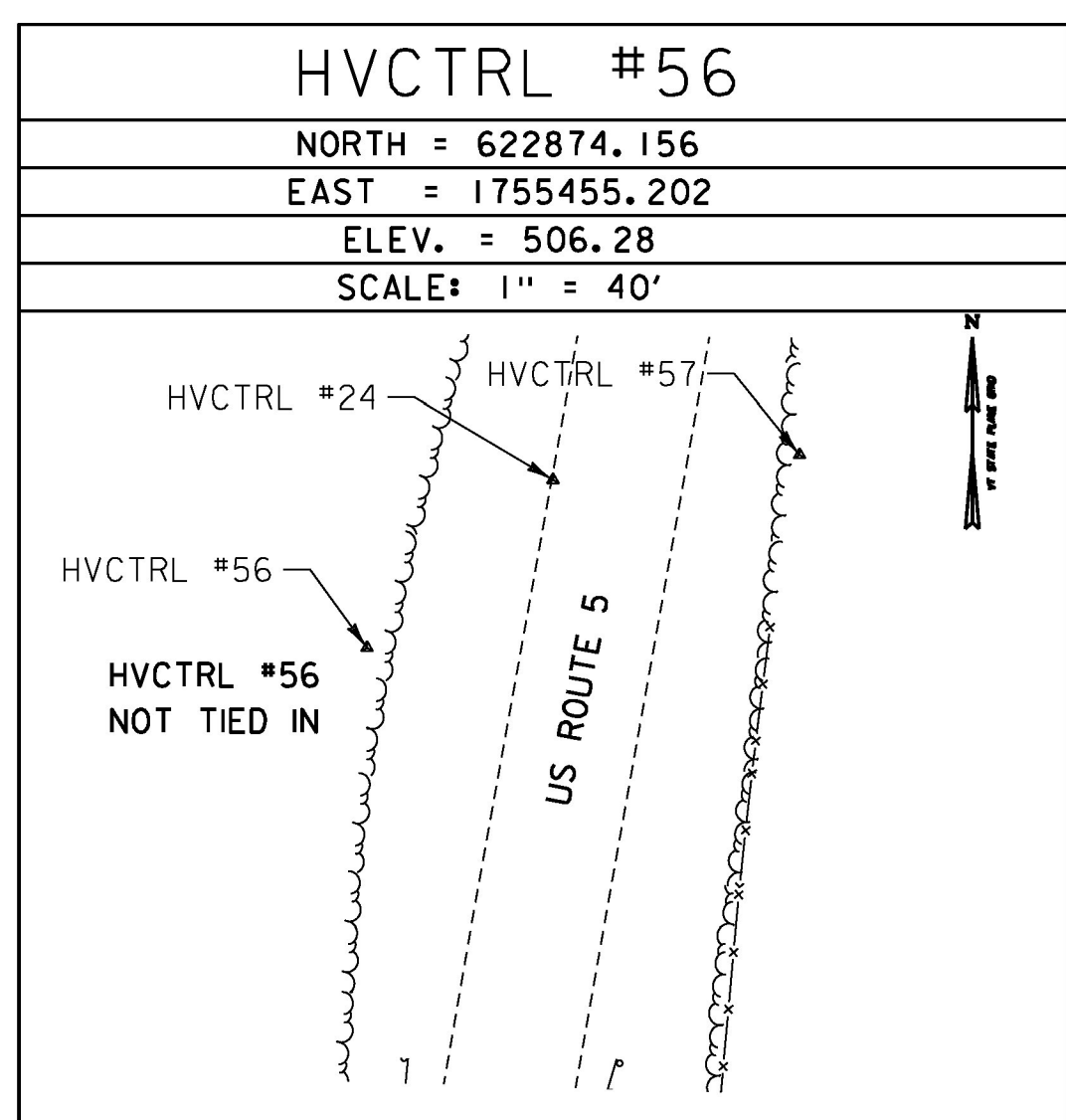
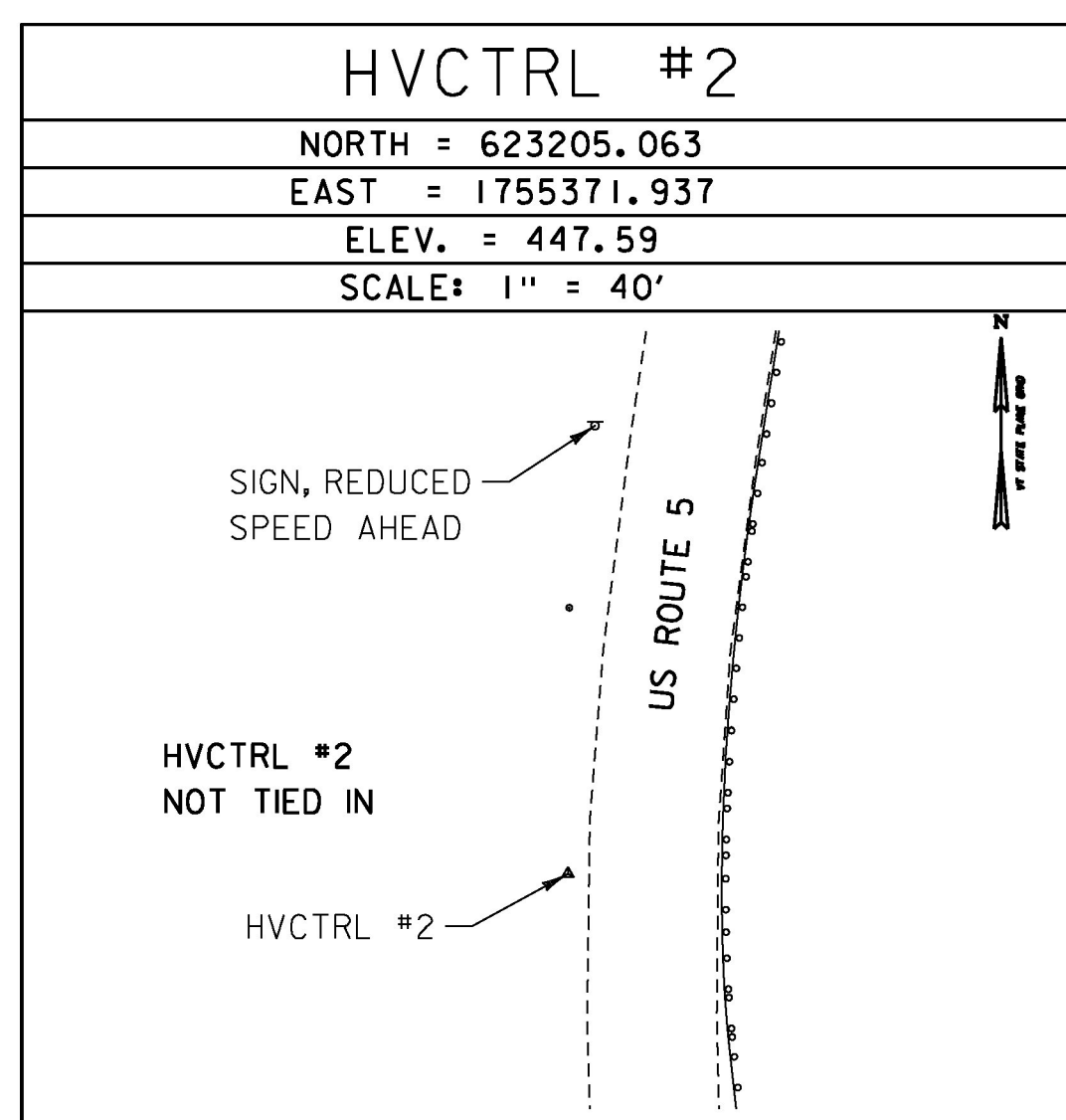
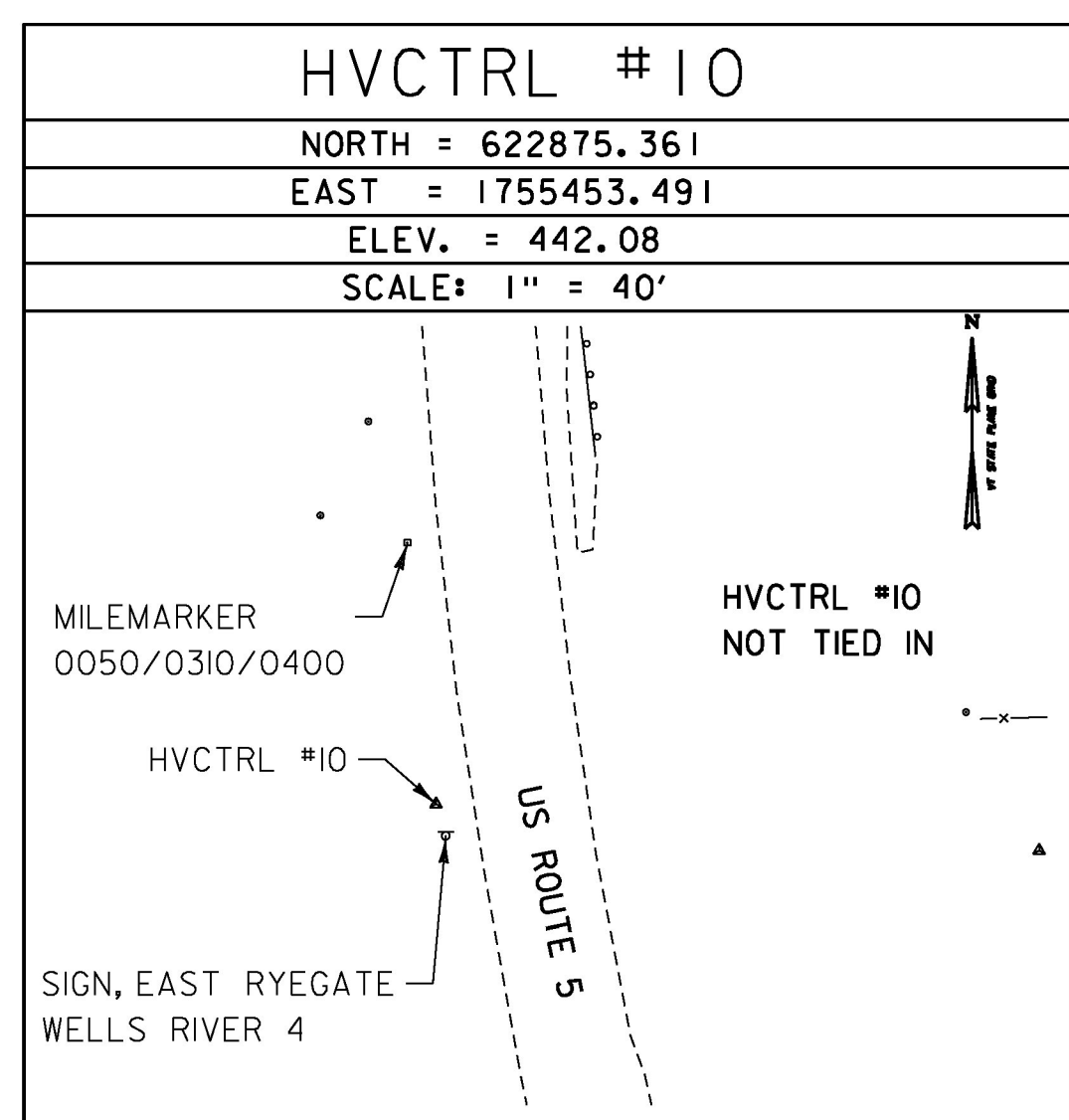
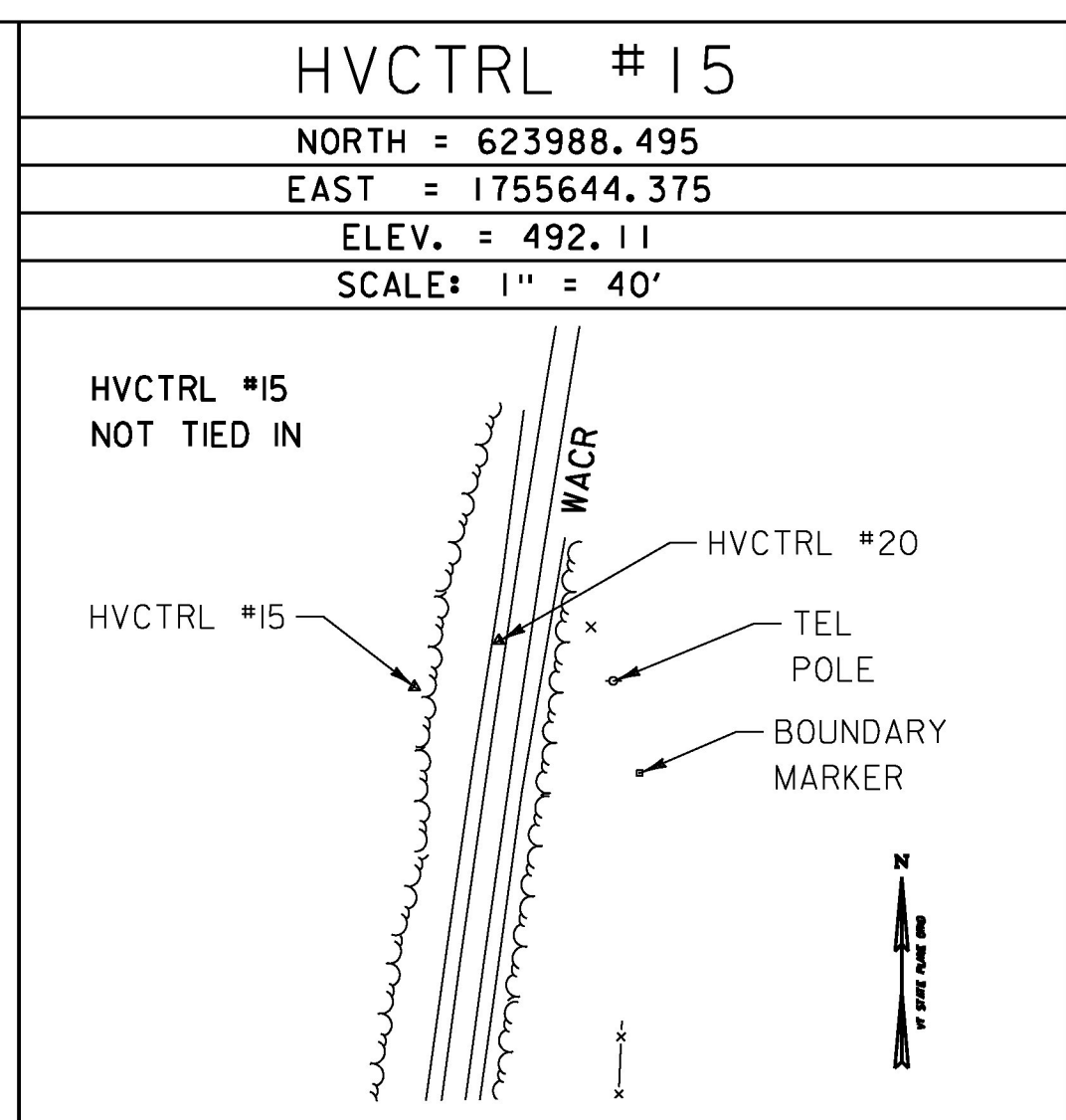
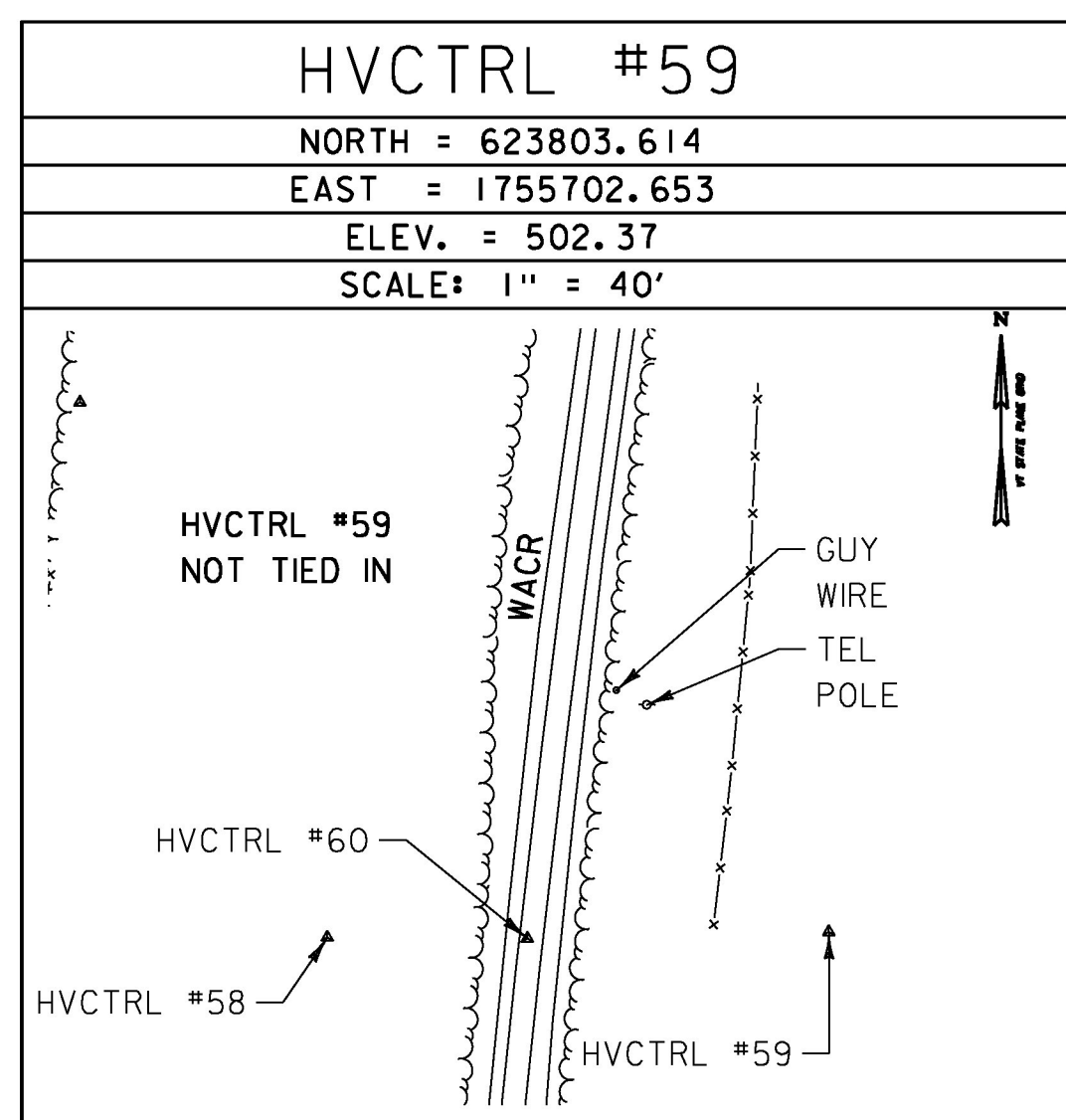
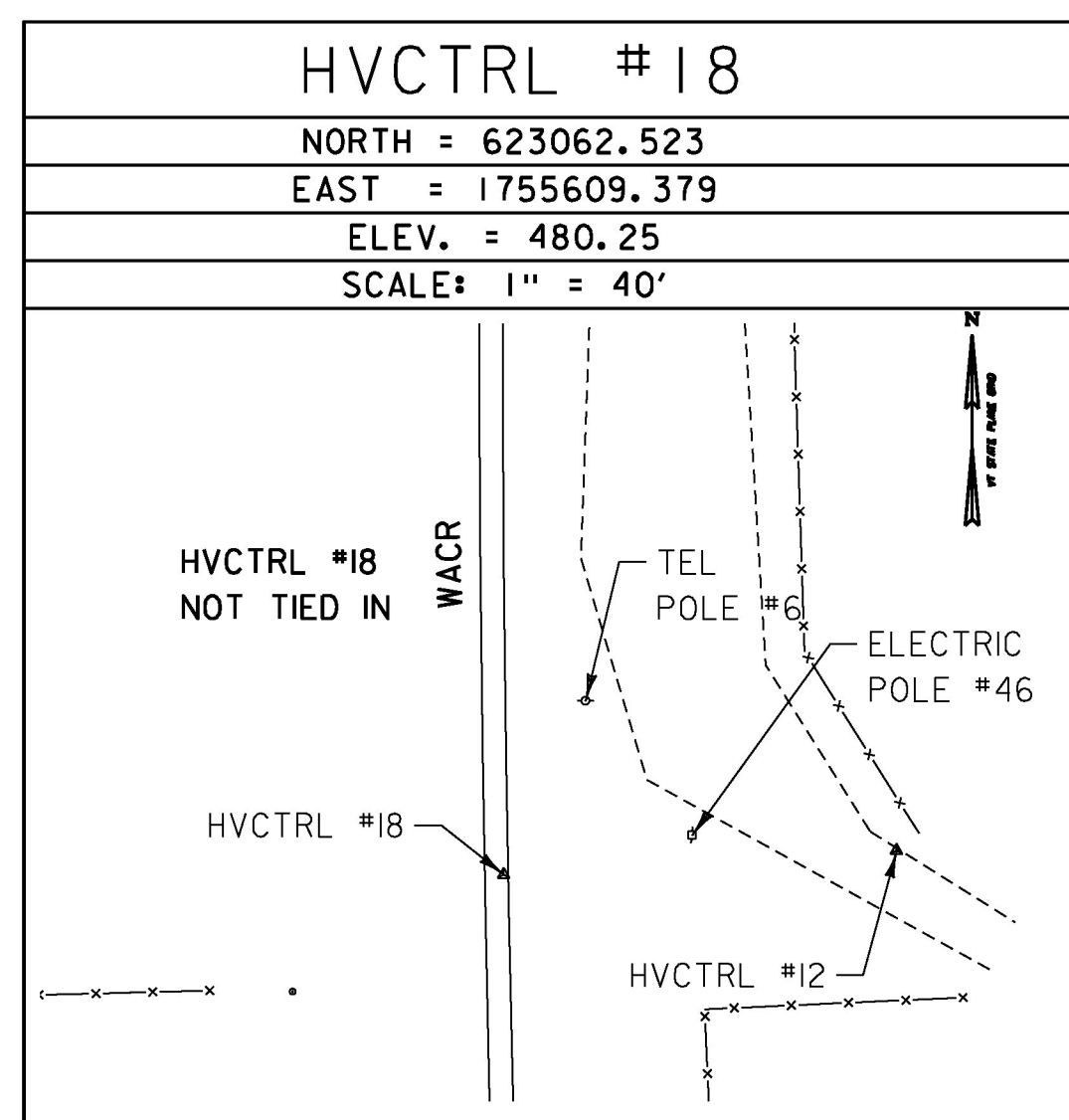


TRAVERSE TIES



TRAVERSE TIES



PI COORDINATES

US ROUTE 5			
PI	STATION	NORTHING	EASTING
POB	STA. 80+14.89	623007.43	1755404.05
PI	STA. 81+95.30	623185.84	1755377.21
POE	STA. 91+61.62	624139.26	1755550.45
WACR			
PI	STATION	NORTHING	EASTING
POB	STA. 2356+73.00	623013.51	1755605.56
PI	STA. 2362+05.43	623545.93	1755609.24
PI	STA. 2368+57.68	624194.12	1755687.46
POE	STA. 2371+37.13	624465.47	1755757.46

ACCESS ROAD 1			
PI	STATION	NORTHING	EASTING
POB	STA. 0+00.00	623414.51	1755418.75
PI	STA. 0+44.21	623450.85	1755393.59
PI	STA. 1+07.24	623515.40	1755405.32
PI	STA. 1+51.89	623559.95	1755397.75
PI	STA. 1+98.01	623598.32	1755371.25
POE	STA. 2+71.01	623664.76	1755414.86
ACCESS ROAD 2			
PI	STATION	NORTHING	EASTING
POB	STA. 20+00.00	623115.73	1755391.25
PI	STA. 22+09.00	623290.16	1755506.39
POE	STA. 24+40.57	623522.56	1755525.46

DATUM
 VERTICAL NAVD 88
 HORIZONTAL NAD 83



RELEASED FOR CONSTRUCTION
 NOVEMBER 24, 2015

PROJECT NAME: RYEGATE
 PROJECT NUMBER: STP CULV(10)

FILE NAME: z06cl56+1.dgn
 PROJECT LEADER: E. DETRICK
 DESIGNED BY: R. BARNES
 TIE SHEET

PLOT DATE: 11/24/2015
 DRAWN BY: J. GOODALL
 CHECKED BY: E. DETRICK
 SHEET 5 OF 29