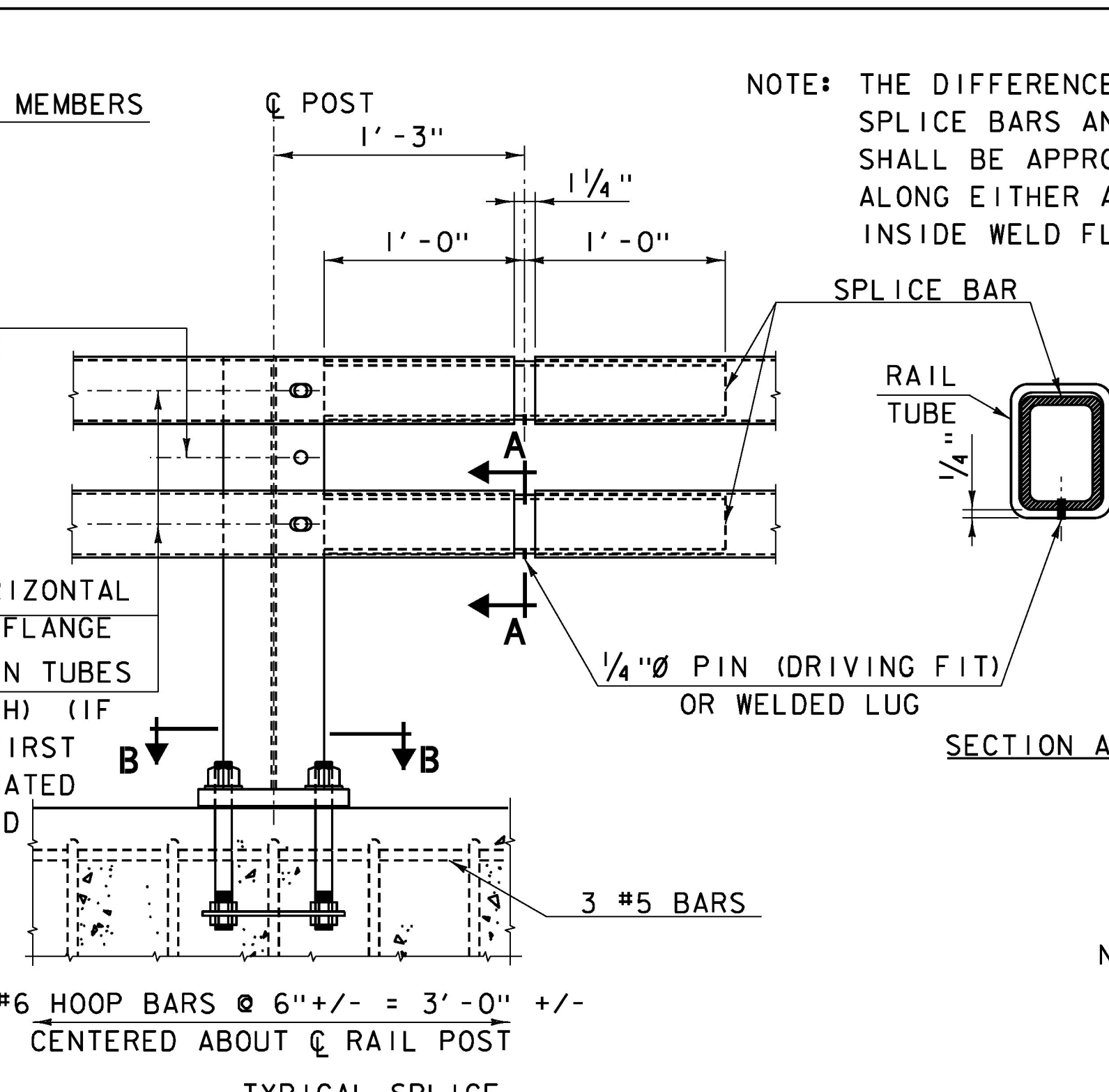
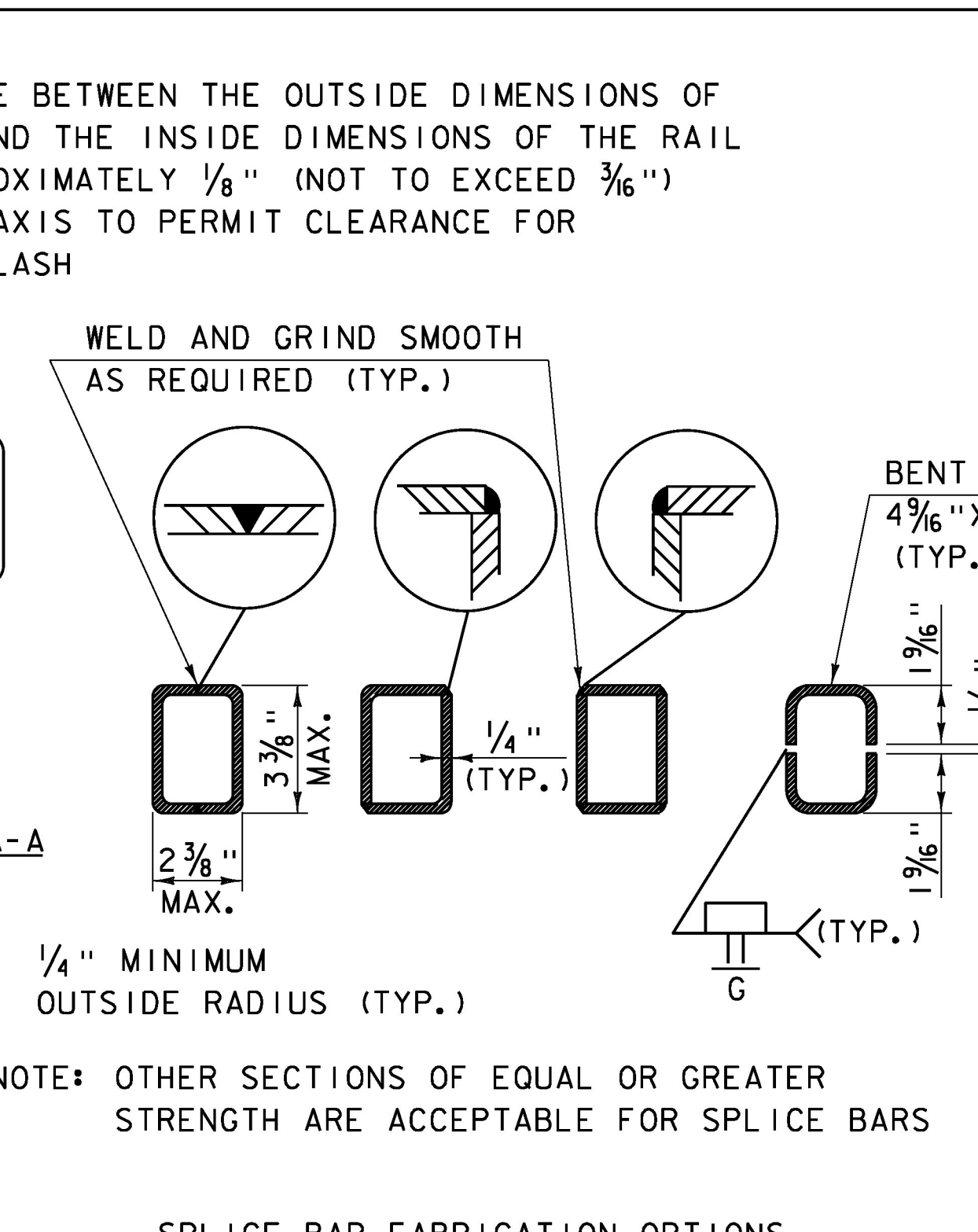


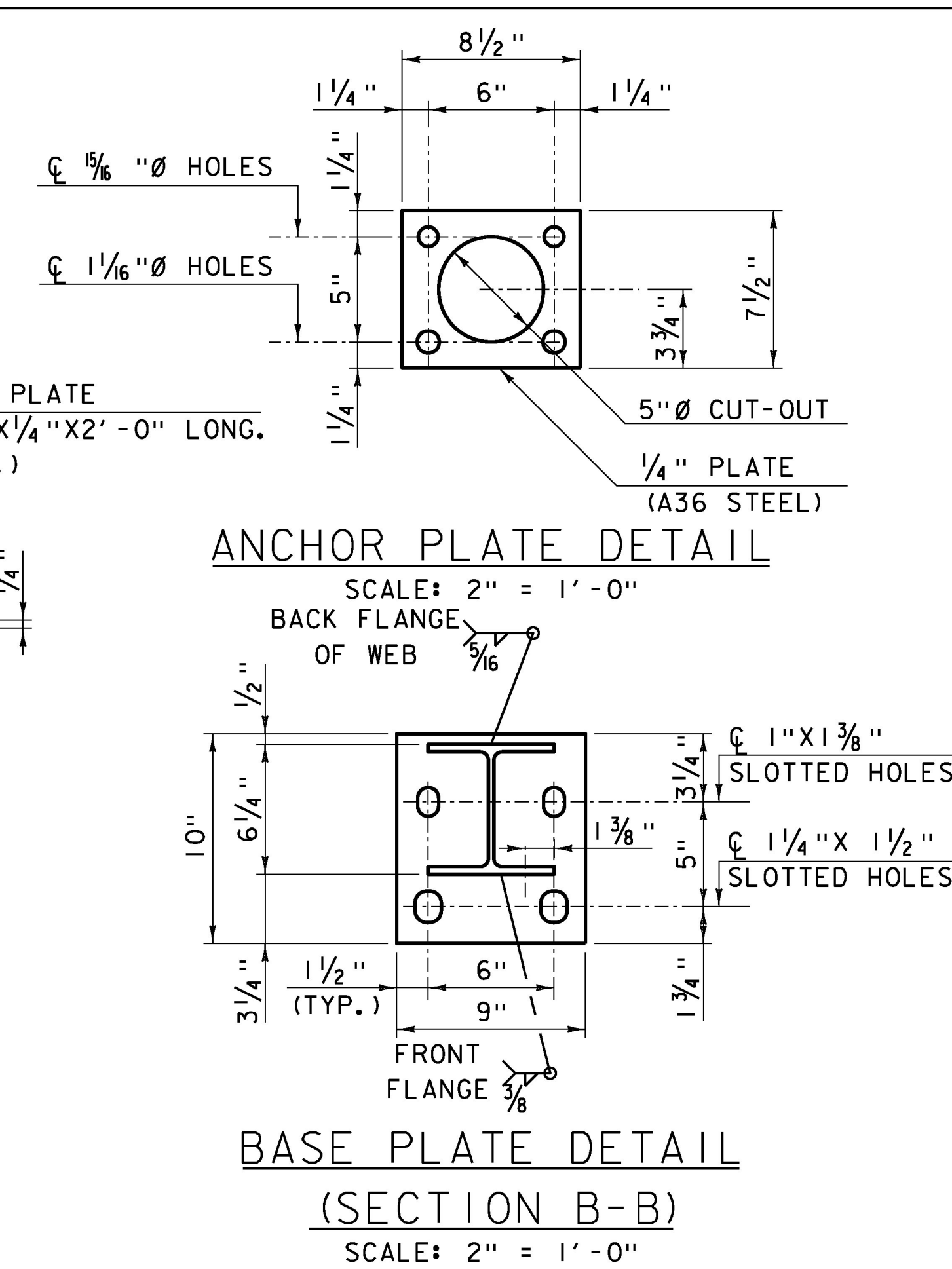
**BRIDGE RAIL DETAIL**  
SCALE: 1/2" = 1'-0"



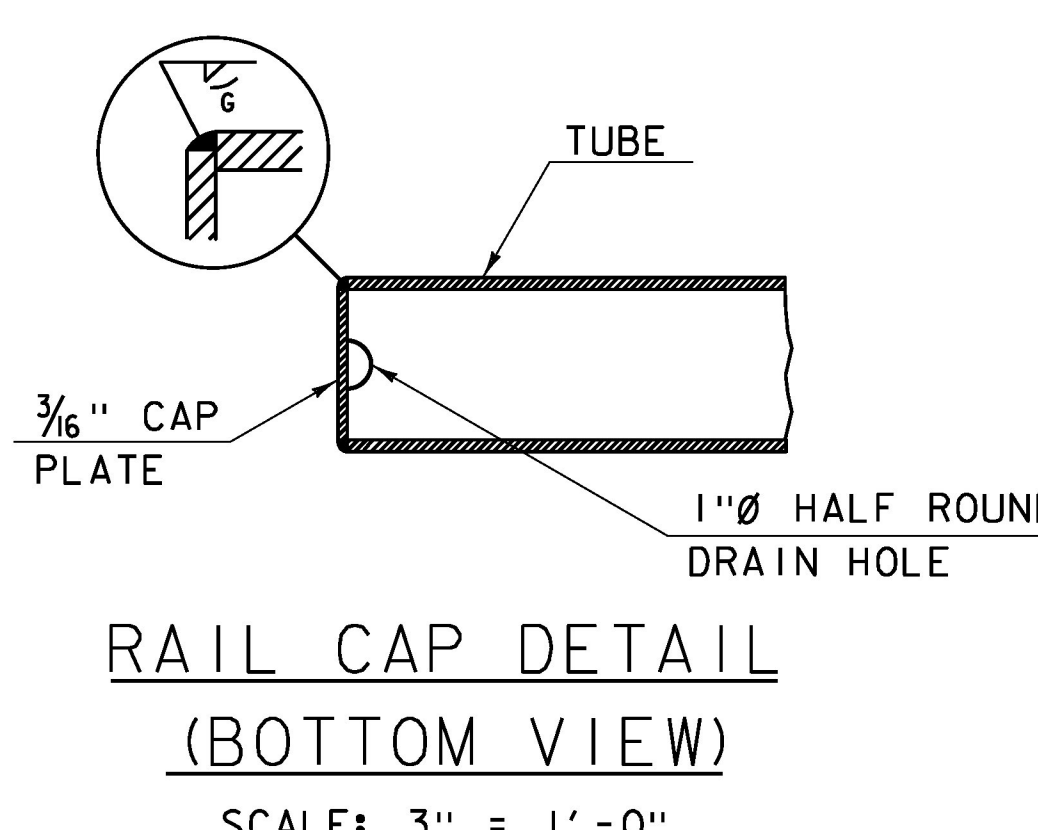
**SPLICE BAR DETAILS**  
NOT TO SCALE



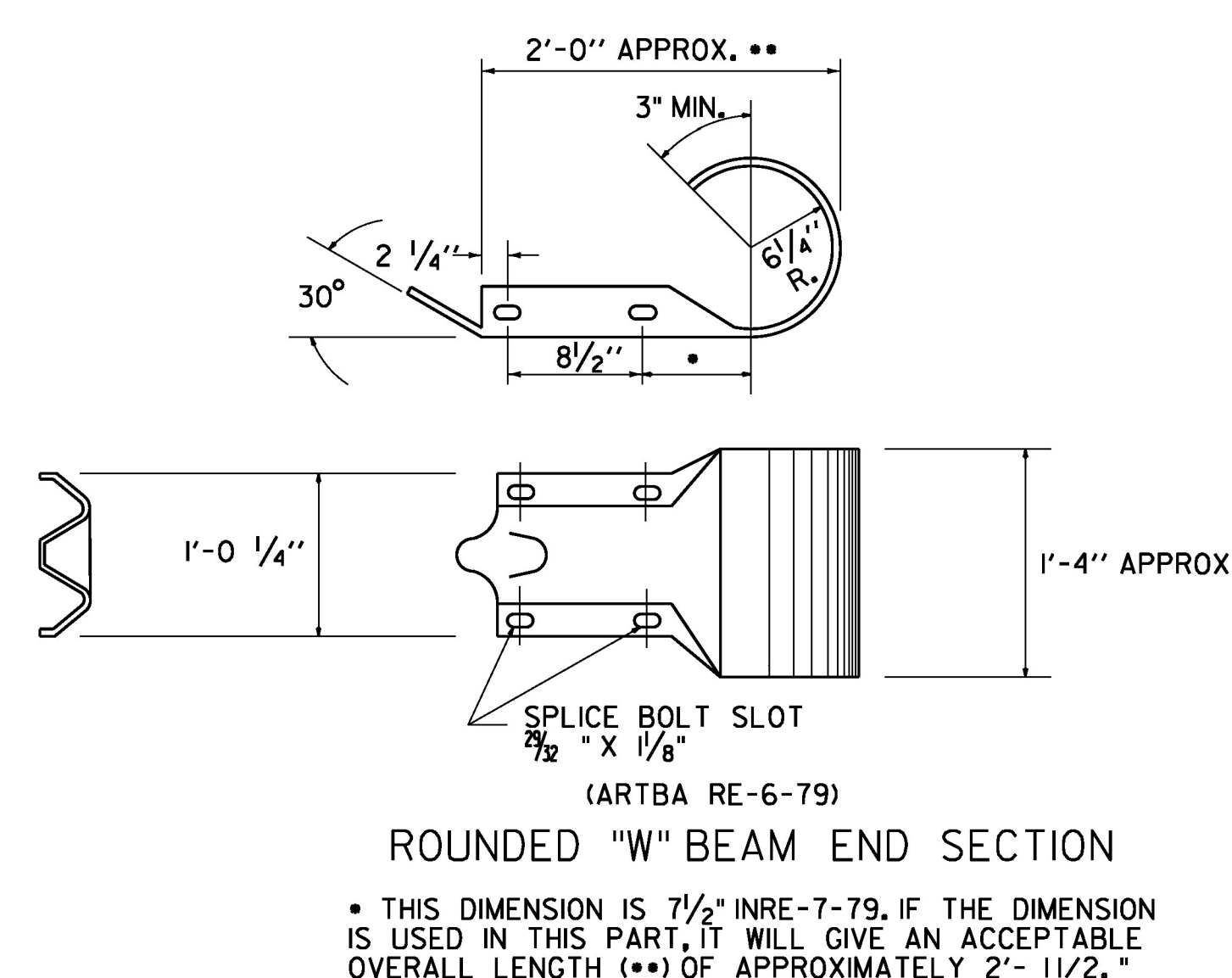
**SPLICE BAR FABRICATION OPTIONS**



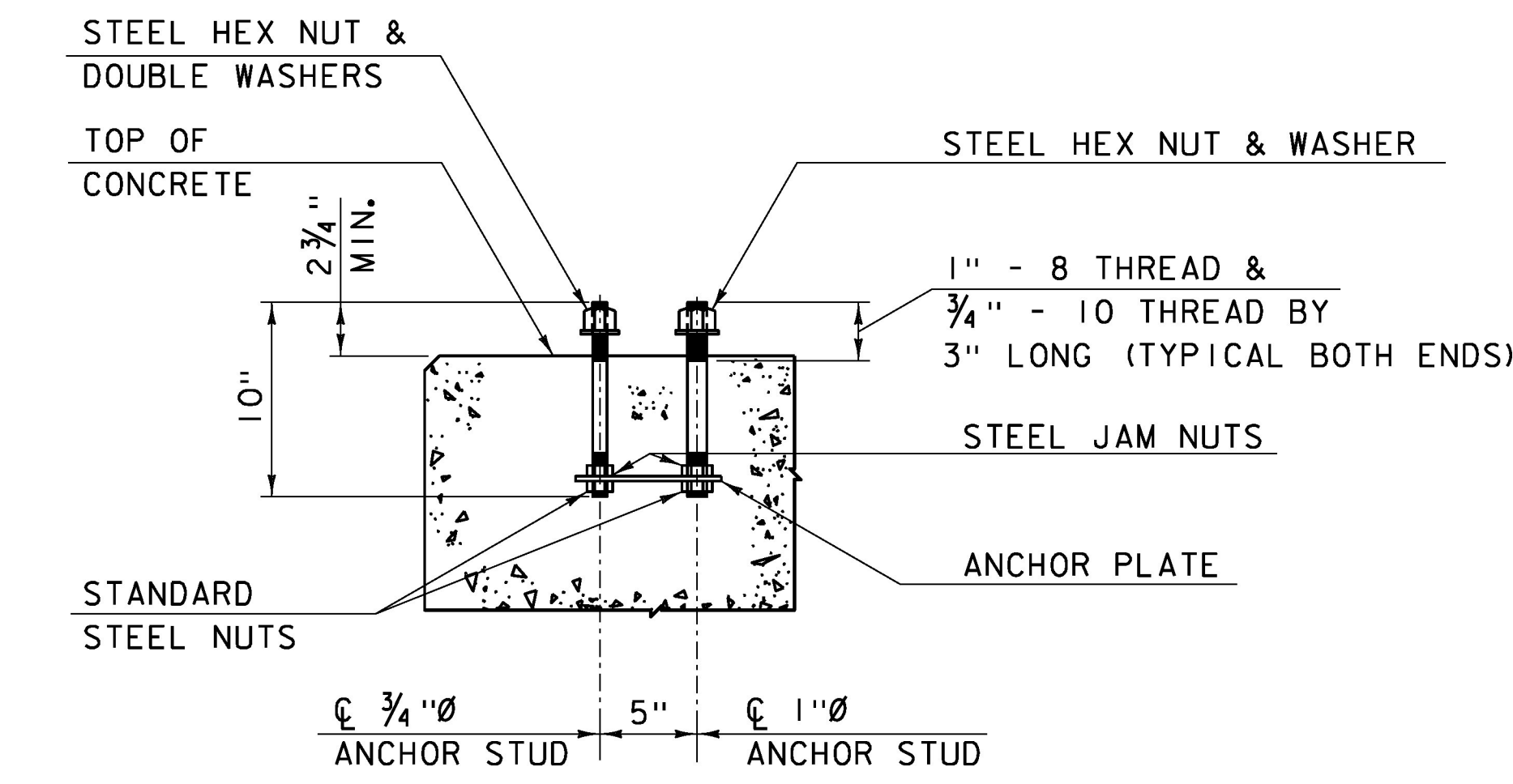
**ANCHOR PLATE DETAIL**  
SCALE: 2" = 1'-0"  
**BASE PLATE DETAIL**  
(SECTION B-B)  
SCALE: 2" = 1'-0"



**RAIL CAP DETAIL**  
(BOTTOM VIEW)  
SCALE: 3" = 1'-0"



**ROUNDED "W" BEAM END SECTION**  
• THIS DIMENSION IS 7/2" IN RE-7-79. IF THE DIMENSION IS USED IN THIS PART, IT WILL GIVE AN ACCEPTABLE OVERALL LENGTH (\*\*) OF APPROXIMATELY 2'-11/2".



**POST ANCHOR ASSEMBLY**  
SCALE: 1/2" = 1'-0"

**GENERAL NOTES**

- BRIDGE RAIL T101 WAS SUCCESSFULLY CRASHED TESTED FOR NCHRP 350 (@ HEIGHT OF 2'-3"), TL-3 PER FHWA MAY 30, 1997 MEMORANDUM.
- MATERIALS WILL MEET THE FOLLOWING REQUIREMENTS:
  - ASTM A572 GRADE 50 : POSTS AND BASE PLATES
  - ASTM A500 GRADE B : STRUCTURAL TUBING
  - ASTM A36 : PIPE SLEEVES, RAIL SPLICE BARS AND ANCHOR PLATES
  - ASTM A449 : ANCHOR STUDS WITH STANDARD NUTS AND HARDENED STEEL COMMERCIAL TYPE A PLAIN WIDE WASHERS
  - A307 : RAIL BOLTS, NUTS, AND WASHERS
  - AASHTO M180 TYPE II : W-BEAM SECTIONS
- ALL STEEL COMPONENTS WILL BE GALVANIZED AFTER FABRICATION IN CONFORMANCE WITH AASHTO M232 (ASTM A153) AND AASHTO M111 (ASTM A123). GALVANIZED SURFACES SHALL HAVE A UNIFORM APPEARANCE AND GALVANIZED MATERIAL SHALL BE PROPERLY STORED.
- STRUCTURAL TUBING WILL BE SUPPLIED AS ONE PIECE FOR BRIDGE RAIL 40 FEET OR LESS IN LENGTH. IN OTHER CASES, TUBING SHALL BE SPLICED WITH A SPLICE BAR (SEE SPLICE BAR DETAILS). NO TRANSVERSE BUTT WELDS ARE PERMITTED ON RAIL TUBING WITHIN A CONTINUOUS LENGTH.
- EACH PIECE OF RAIL TUBING WILL BE ATTACHED TO A MINIMUM OF THREE POSTS.
- PREFORMED BEARING PADS SHALL CONFORM TO AASHTO M251.
- NUTS FOR THREADED ANCHOR STUDS CONNECTING THE BASE PLATE TO THE CONCRETE SHALL BE TIGHTENED TO A SNUG FIT AND GIVEN AN ADDITIONAL 1/8 TURN.
- T101 RAILING WILL CONFORM TO SECTION 525 OF THE SPECIFICATIONS.

	PROJECT NAME: RYEGATE	PLOT DATE: 3/23/16
	PROJECT NUMBER: STP CULV(10)	DRAWN BY: R. BARNES
	FILE NAME: z06cl56r-all.dgn	CHECKED BY: E. DETRICK
	PROJECT LEADER: E. DETRICK	SHEET 30 OF 36
	DESIGNED BY: R. BARNES	
	T101 RAILING DETAILS	