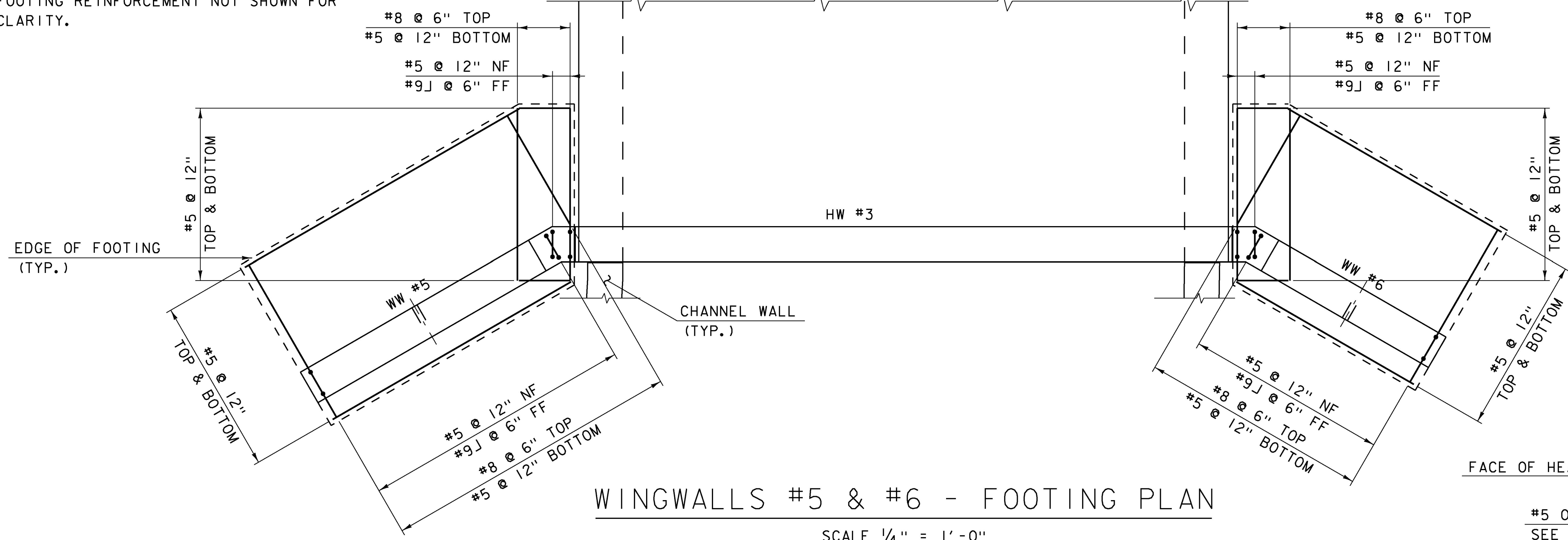
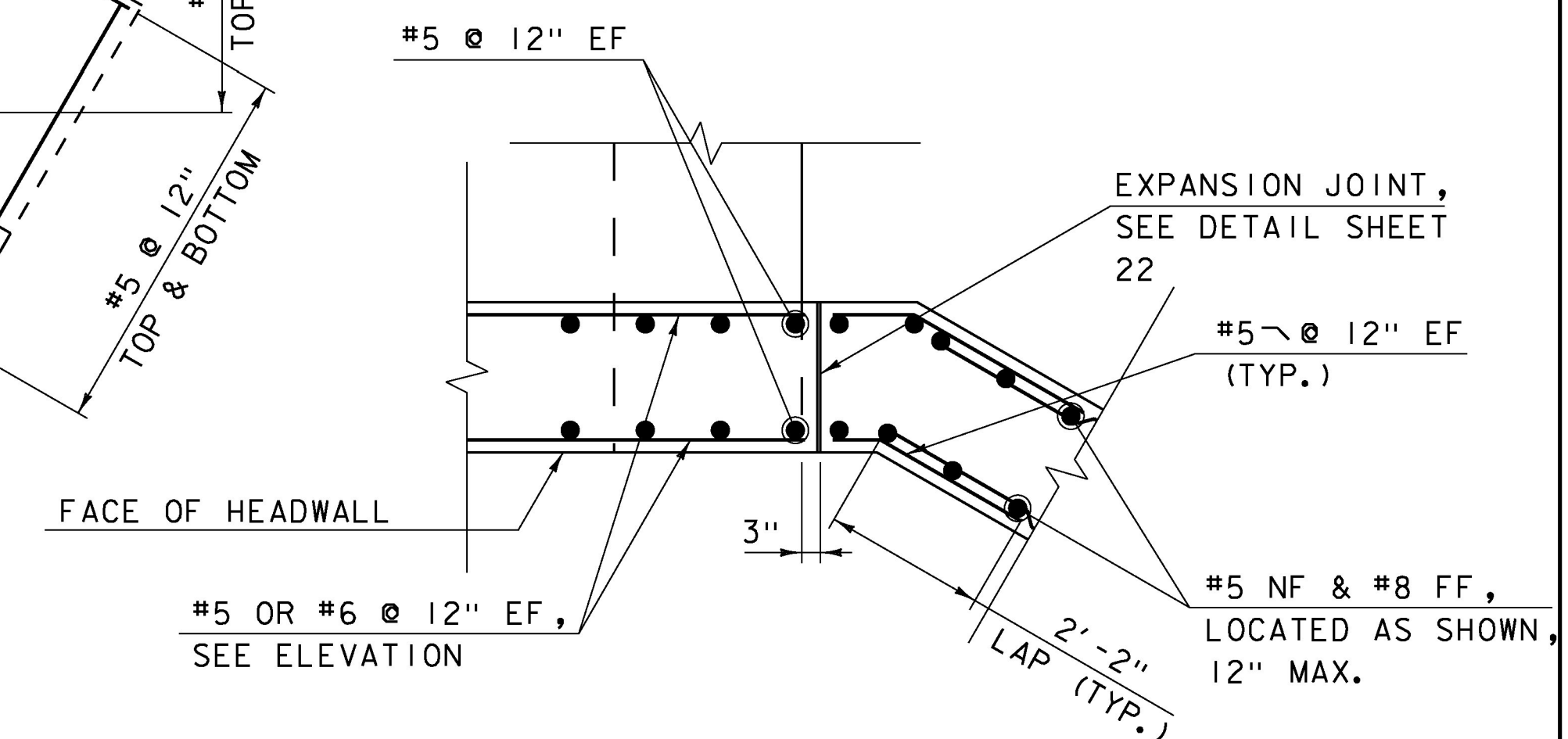


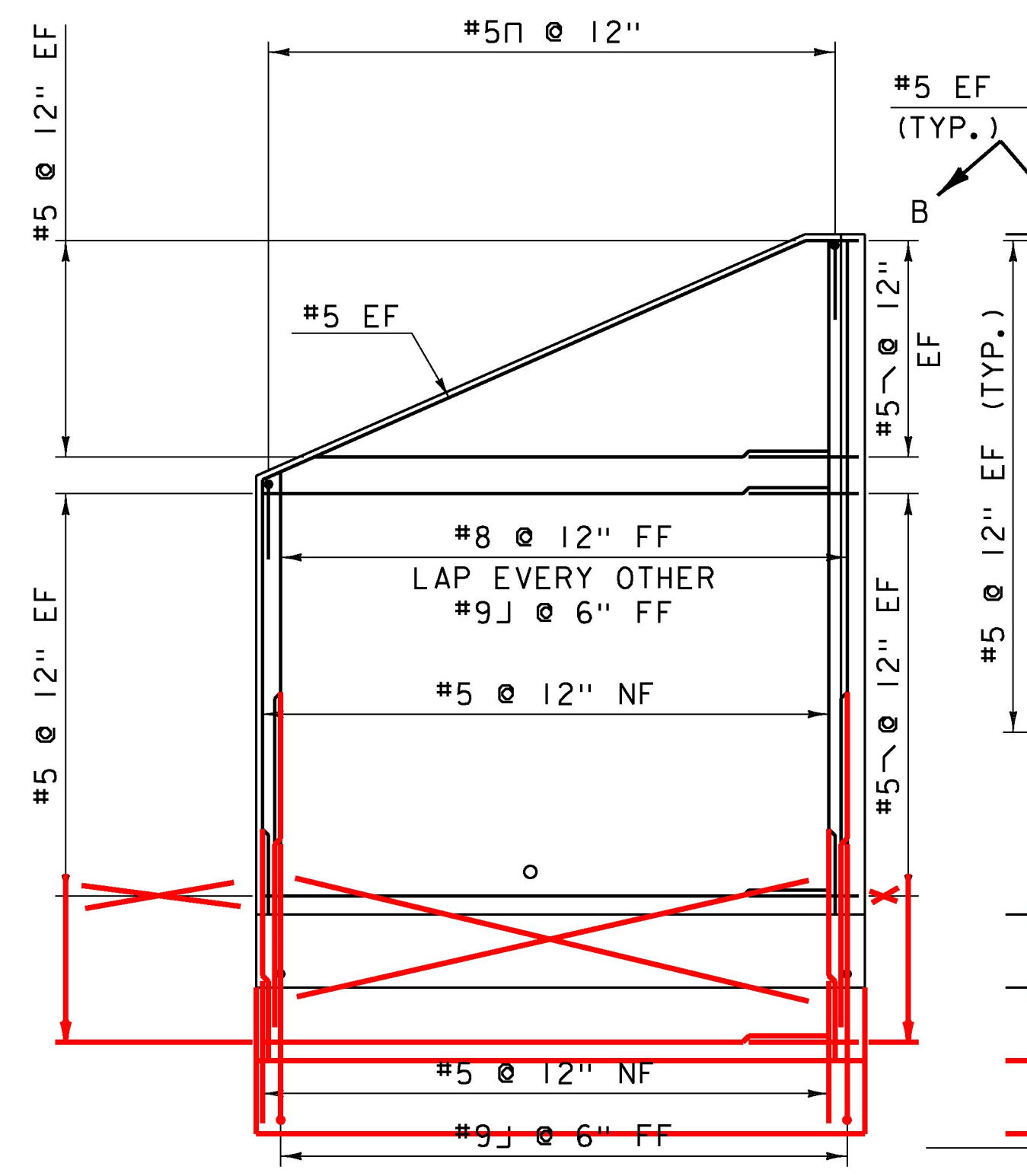
NOTE: BURIED STRUCTURE AND CHANNEL WALL  
FOOTING REINFORCEMENT NOT SHOWN FOR  
CLARITY.



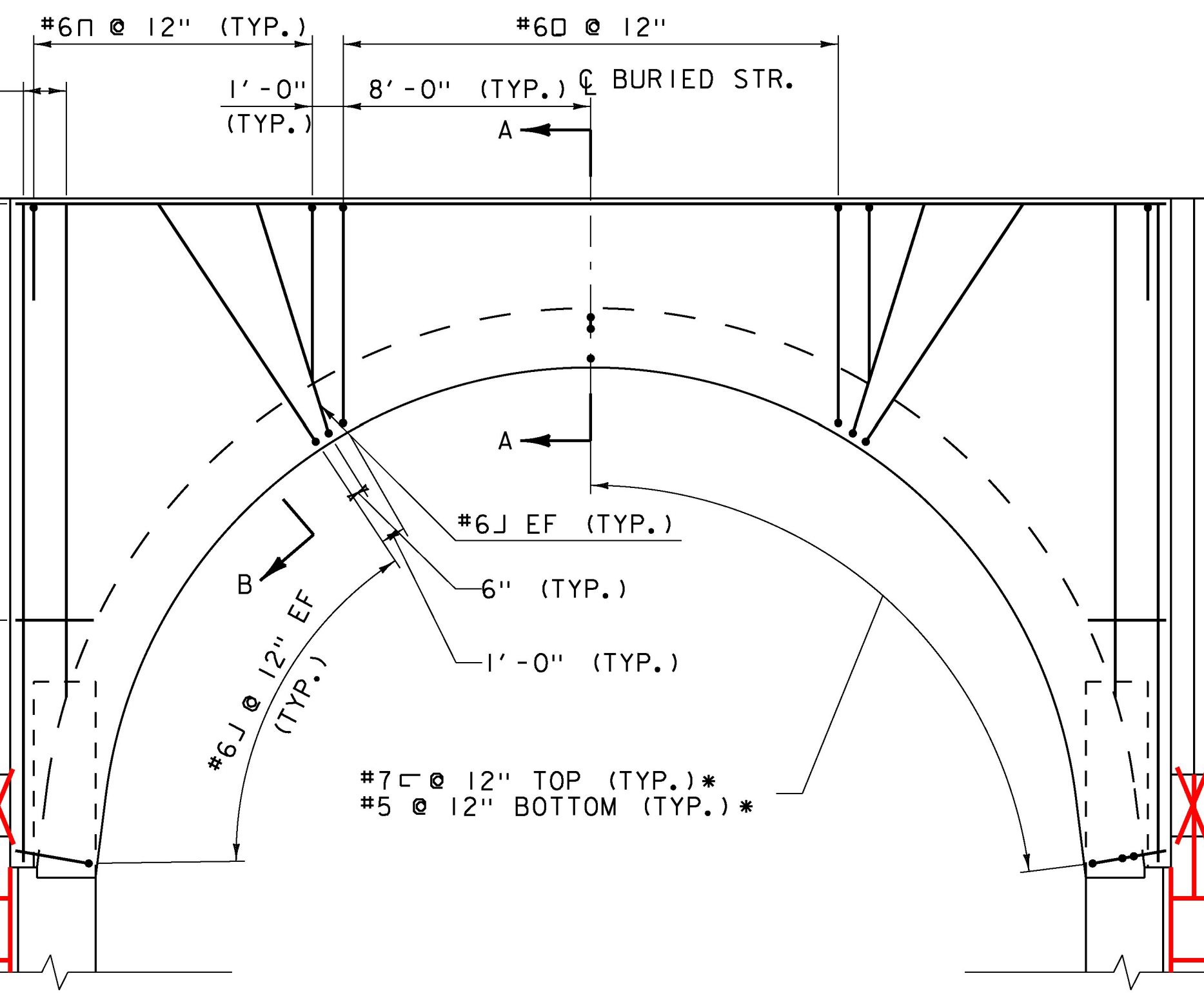
WINGWALLS #5 & #6 - FOOTING PLAN  
SCALE 1/4" = 1'-0"



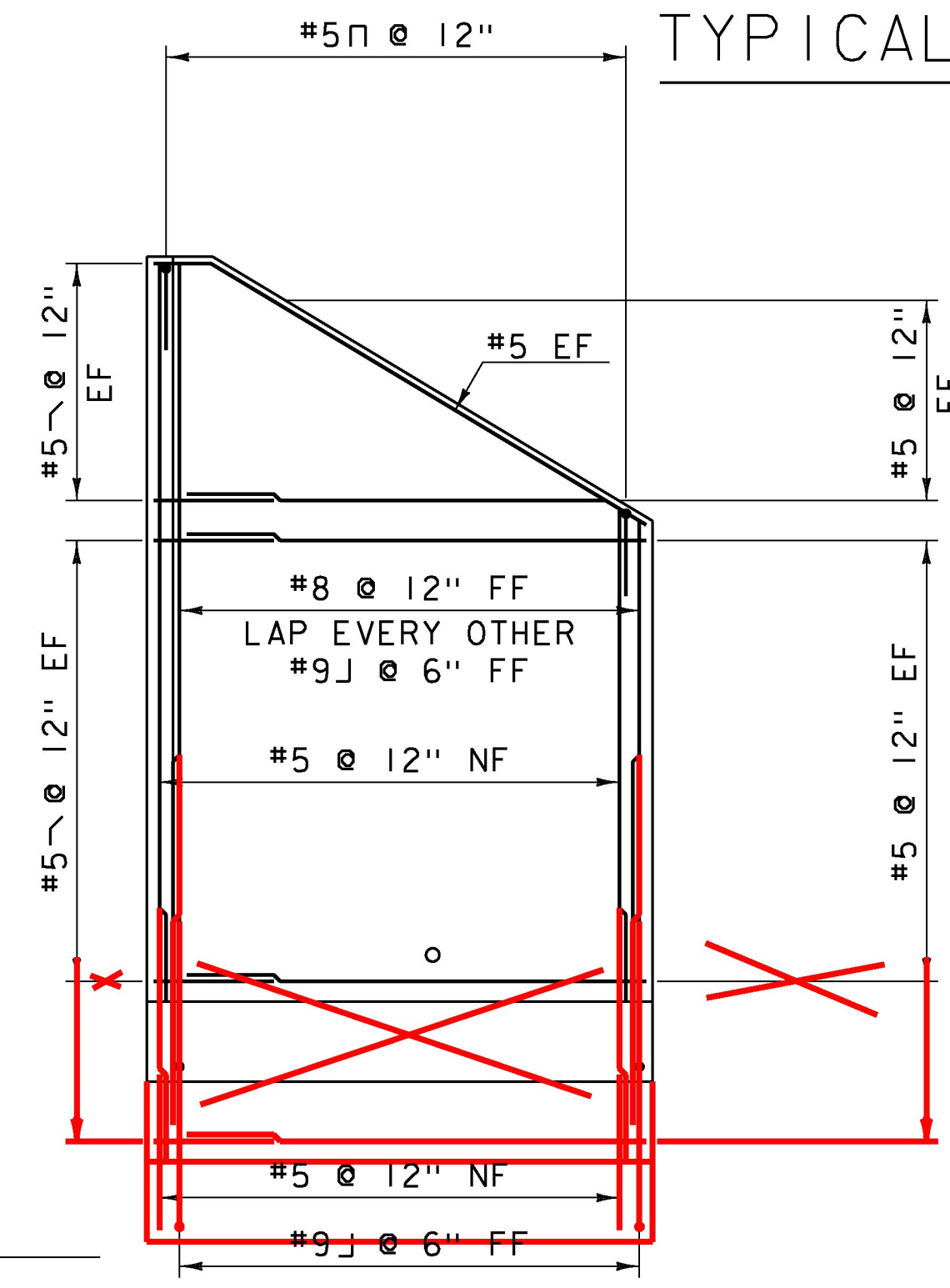
TYPICAL WINGWALL CORNER DETAIL  
NOT TO SCALE



WINGWALL #5 - ELEVATION  
SCALE 1/4" = 1'-0"



HEADWALL #3 - ELEVATION  
SCALE 1/4" = 1'-0"



WINGWALL #6 - ELEVATION  
SCALE 1/4" = 1'-0"

NOTE:  
NF = NEAR FACE  
FF = FAR FACE  
EF = EACH FACE  
▲ = CUT TO FIT IN FIELD  
3" CLEAR, UNLESS OTHERWISE  
SPECIFIED ON THE PLANS.  
2'-2" BAR LAP UNLESS OTHERWISE  
SPECIFIED ON THE PLANS.

NOTES:  
1. SEE SHEET 23 FOR SECTIONS A-A AND B-B. SEE SHEET 25 FOR WINGWALL SECTION.  
2. MAIN REINFORCING STEEL IN BOTTOM OF HEADWALL SECTION, ALTHOUGH NOT SHOWN IN ELEVATION FOR CLARITY, WILL BE THE SAME AS THAT USED IN THE ADJACENT BURIED STRUCTURE.

\* #7 AND #5 MECHANICAL BAR CONNECTOR AT HEADWALL JOINT.



PROJECT NAME:	RYEGATE
PROJECT NUMBER:	STP CULV(10)
FILE NAME:	...AsBuiltSurvey\z06ci56bSUB4.dwg
PROJECT LEADER:	E. DETRICK
DESIGNED BY:	R. BARNES
WACR INLET DETAILS	
DATE:	12/1/2016
DRAWN BY:	R. BARNES
CHECKED BY:	E. DETRICK
SHEET	27 OF 56