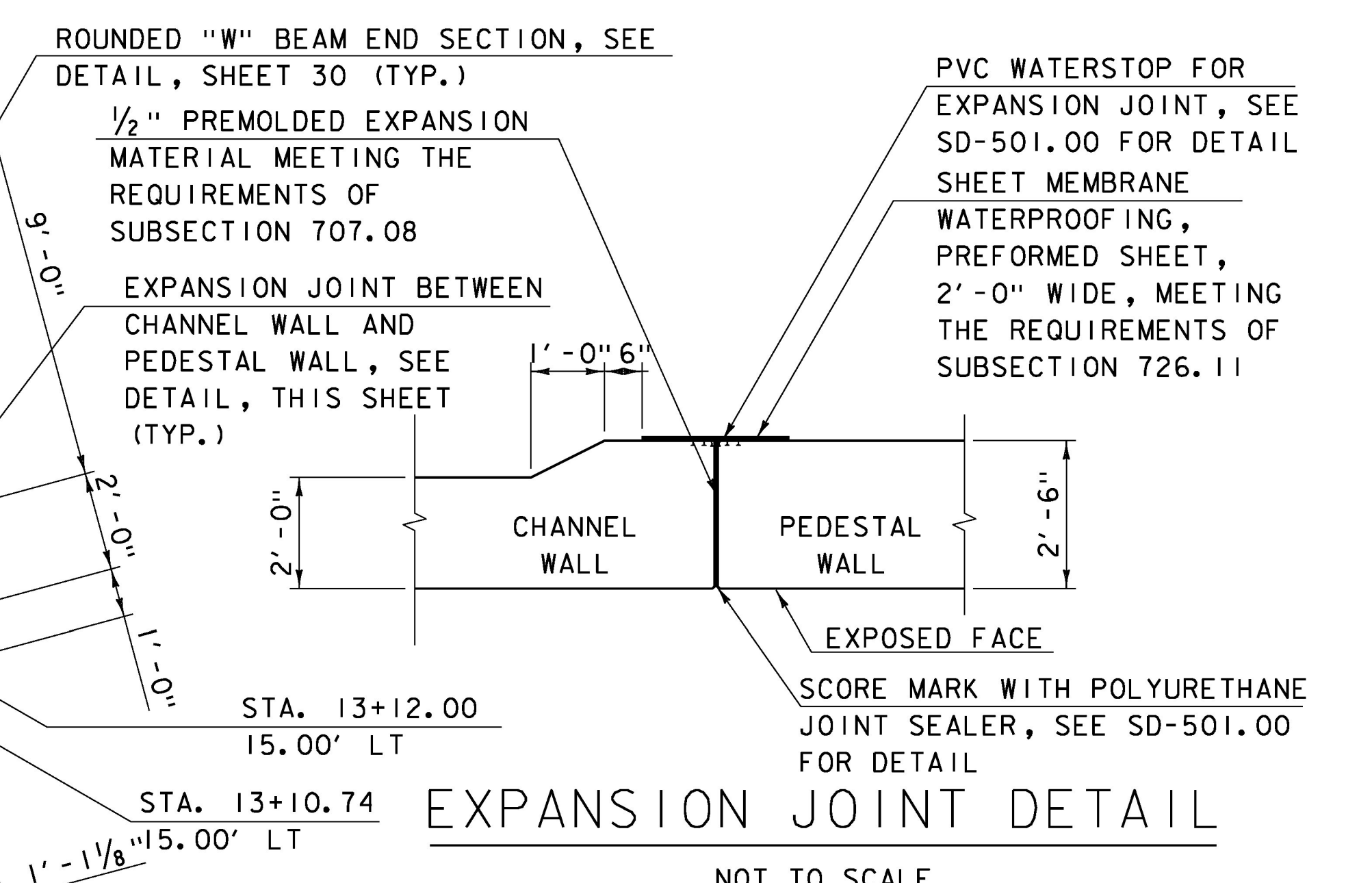


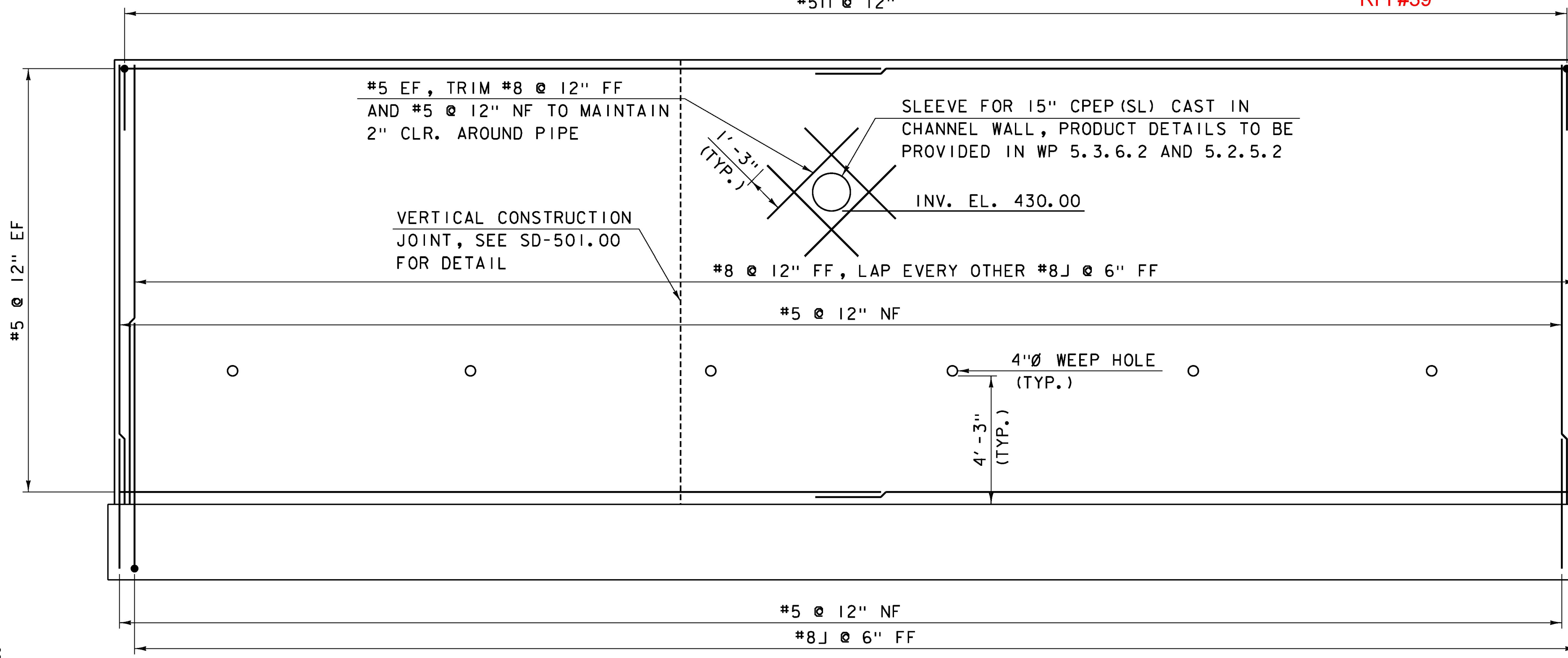
CHANNEL WALL #1 - PLAN

SCALE 3/8" = 1'-0"
#5 @ 12"



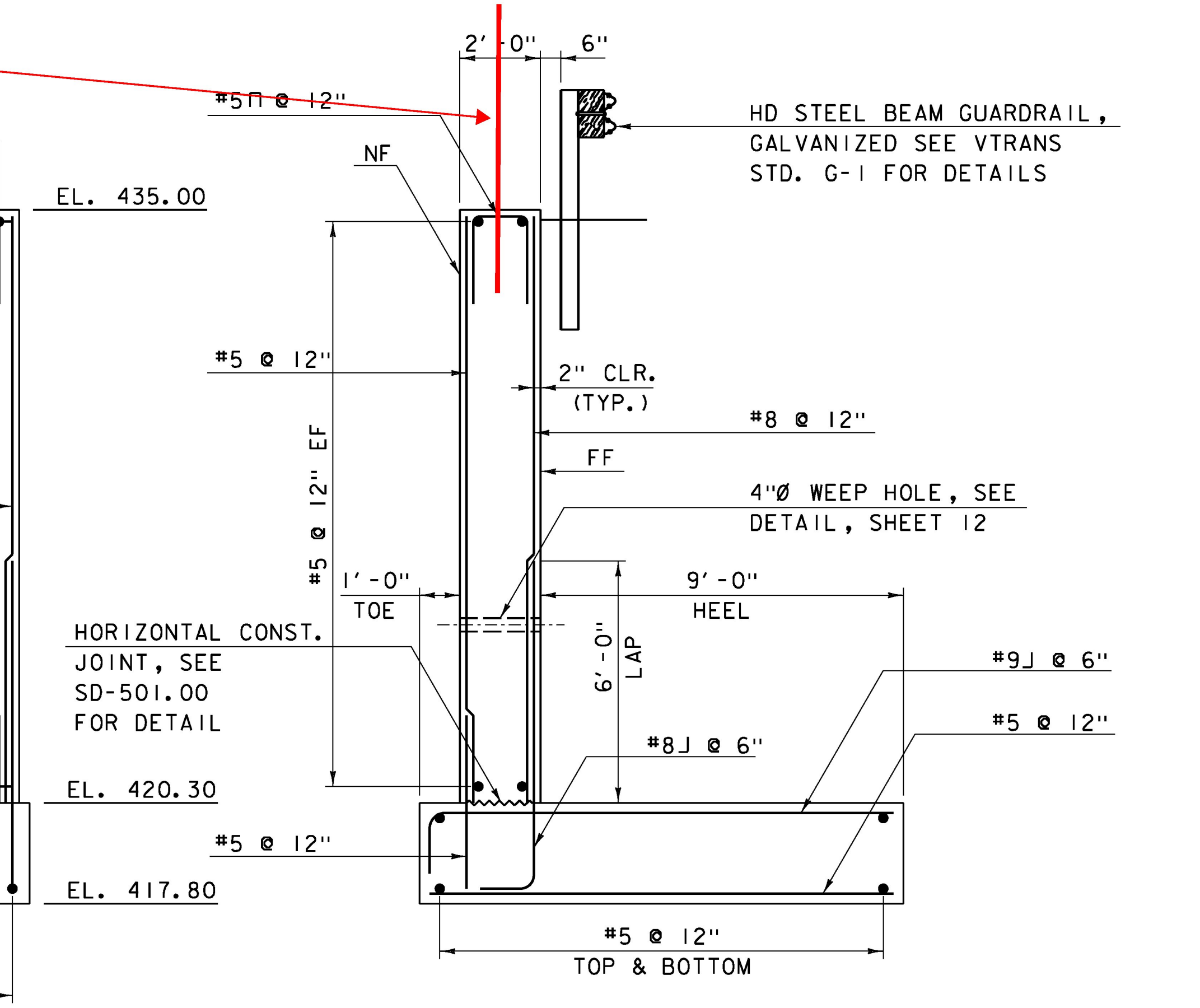
EXPANSION JOINT DETAIL

EXPANSION JOINT NOTES:
1. AT THE CHANNEL WALL TO PEDESTAL WALL JOINTS, THE PVC WATERSTOP NEED NOT EXTEND ABOVE THE TOP OF PEDESTAL WALL.
2. WHERE AN EXPANSION JOINT ABUTS A MEMBER COVERED BY SHEET MEMBRANE WATERPROOFING, TORCH APPLIED, THIS MEMBRANE MAY BE USED IN LIEU OF SHEET MEMBRANE WATERPROOFING, PREFORMED SHEET.



CHANNEL WALL #1 - ELEVATION (CURVED)

SCALE 3/8" = 1'-0"



SECTION A-A

SCALE 3/8" = 1'-0"

NOTE:
NF = NEAR FACE
FF = FAR FACE
EF = EACH FACE
▲ = CUT TO FIT IN FIELD
3" CLEAR, UNLESS OTHERWISE SPECIFIED ON THE PLANS.
2'-2" BAR LAP UNLESS OTHERWISE SPECIFIED ON THE PLANS.

NOTE: RAIL NOT SHOWN IN ELEVATION FOR CLARITY.



PROJECT NAME: RYEGATE	PLOT DATE: 3/23/16
PROJECT NUMBER: STP CULV(10)	DRAWN BY: R. BARNES
FILE NAME: z06cl56chwall.dgn	CHECKED BY: E. DETRICK
DESIGNED BY: P. BERO	CHECKED BY: E. DETRICK
CHANNEL WALL #1 PLAN, ELEVATION, SECTION	SHEET 19 OF 36