

646.426 DURABLE 6 INCH WHITE LINE, RECESSED POLYUREA

U.S. ROUTE 4 WESTBOUND:  
STA 11+00.00 - STA 17+00.00 EDGE LINE C/L  
STA 11+00.00 - STA 12+85.00 DOTTED LANE LINE RT

646.622 TEMPORARY 6 INCH WHITE LINE, PAINT

U.S. ROUTE 4 WESTBOUND:  
STA 11+00.00 - STA 17+00.00 EDGE LINE C/L  
STA 11+00.00 - STA 12+85.00 DOTTED LANE LINE RT

646.436 DURABLE 6 INCH YELLOW LINE, RECESSED POLYUREA

U.S. ROUTE 4 WESTBOUND:  
STA 11+00.00 - STA 17+00.00 SOLID LANE LINE RT

646.632 TEMPORARY 6 INCH YELLOW LINE, PAINT

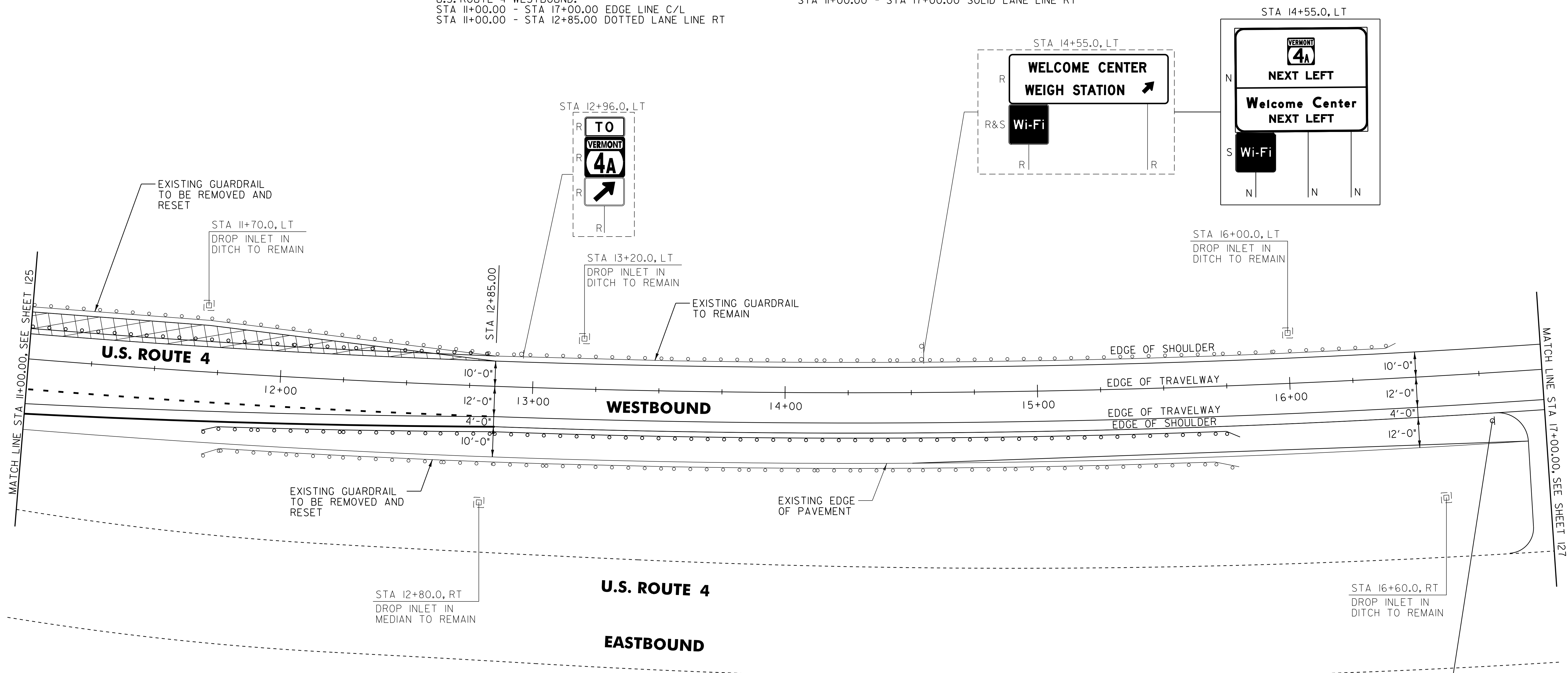
U.S. ROUTE 4 WESTBOUND:  
STA 11+00.00 - STA 17+00.00 SOLID LANE LINE RT

675.50 REMOVING SIGNS

AS SHOWN - 5

675.60 ERECTING SALVAGED SIGNS

AS SHOWN - 1



**LEGEND**

REMOVAL OF EXISTING PAVEMENT

**213.10 MILLED RUMBLE STRIPS**  
 U.S. ROUTE 4 WESTBOUND:  
 STA 11+00.0 - STA 17+00.0 LT (600.0 LF)  
 STA 12+85.0 - STA 16+75.0 RT (390.0 LF)

**621.50 MANUFACTURED TERMINAL SECTION, FLARED**  
 U.S. ROUTE 4 WESTBOUND:  
 STA 15+45.0 - STA 15+82.5 RT

**621.75 REMOVE AND RESET GUARDRAIL**  
 U.S. ROUTE 4 WESTBOUND:  
 STA 11+00.0 - STA 12+87.0 LT (187.0 LF)  
 STA 11+70.0 - STA 15+45.0 RT (375.0 LF)

**621.80 REMOVAL AND DISPOSAL OF GUARDRAIL**  
 U.S. ROUTE 4 WESTBOUND:  
 STA 15+45.0 - STA 15+82.5 LT (37.5 LF)

**SIGN LEGEND**  
 R = REMOVE  
 S = SALVAGE  
 N = NEW  
 RET = RETAIN  
 B-B = BACK TO BACK  
 EXISTING = - - - - -  
 NEW = \_\_\_\_\_

**PROJECT LAYOUT SHEET #3**

PROJECT NAME: FAIR HAVEN	PLOT DATE: 22-FEB-2012 12:55
PROJECT NUMBER: NH HES 020-K21	DRAWN BY: C.A.K.
FILE NAME: 08b234.dgn	CHECKED BY: D.E.G.
PROJECT LEADER: D.E.G.	SHEET 126 OF 157
DESIGNED BY: M.J.M.	
DWG. NO. 08b234103.i	