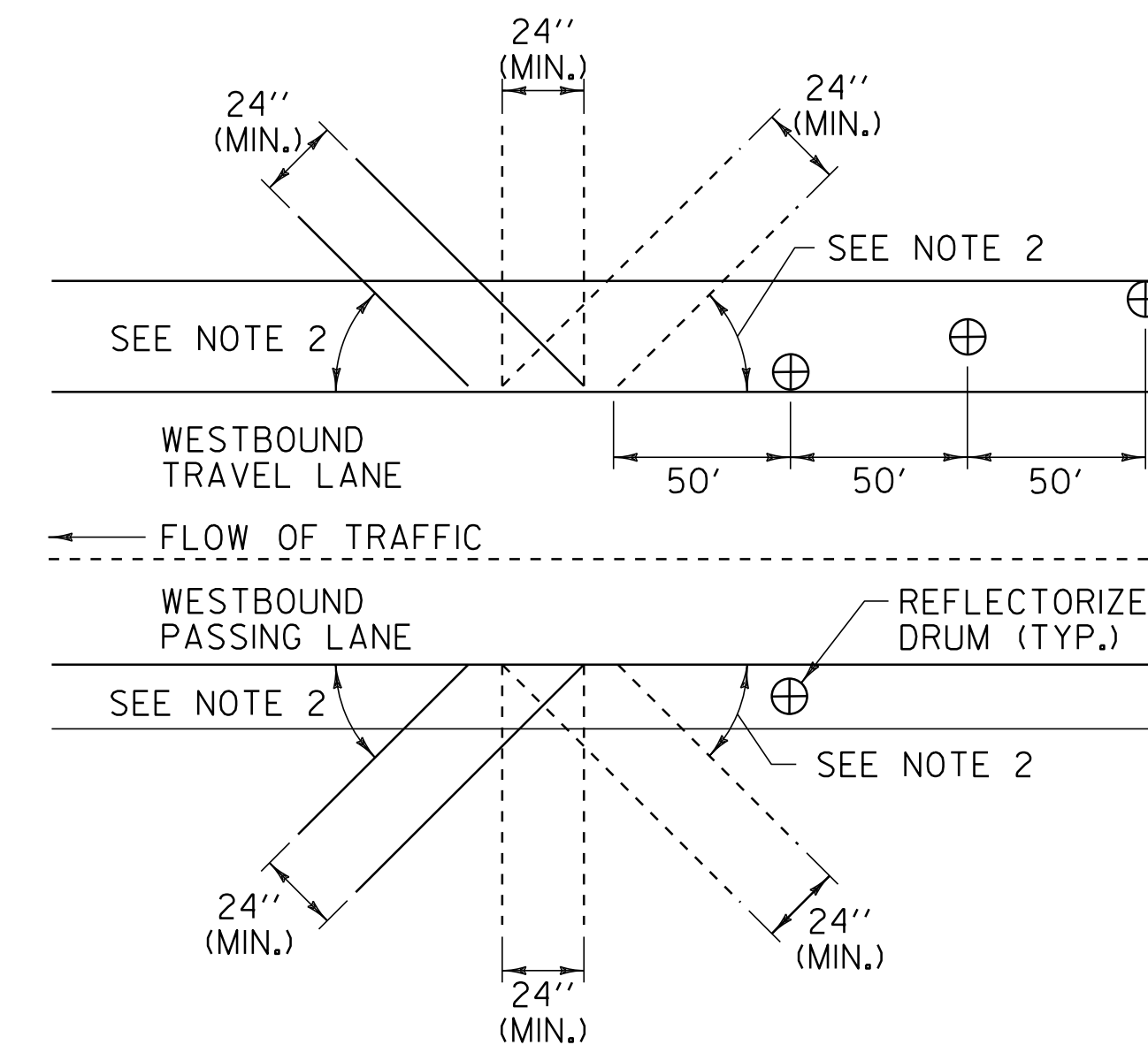


MAINLINE APPROACH AREA DETAIL LOCATION

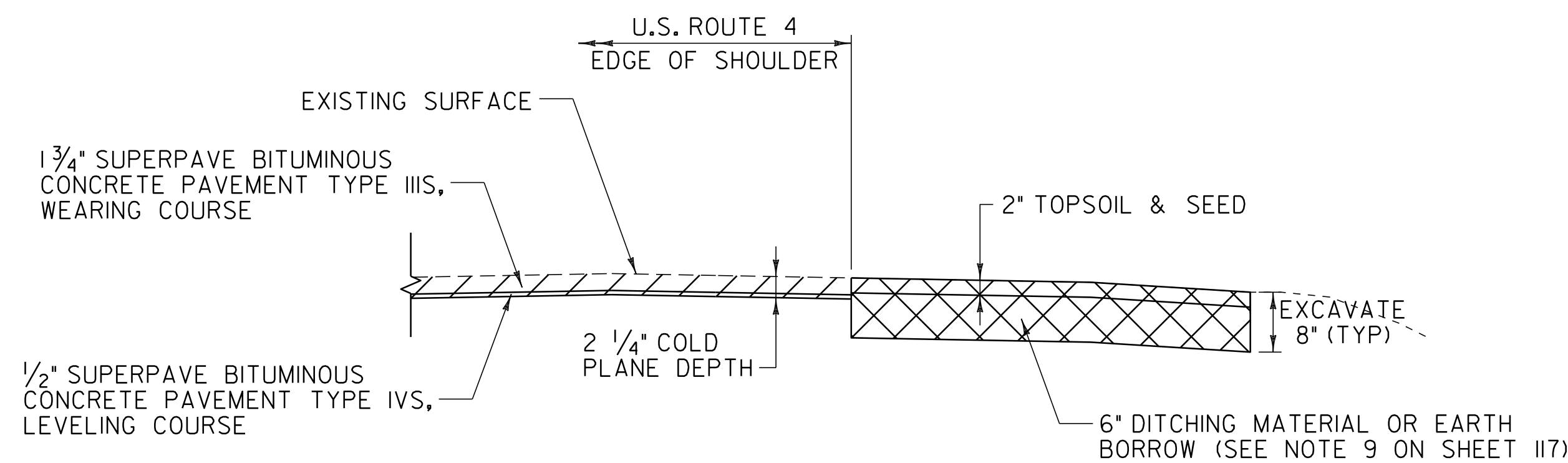
U.S. ROUTE 4 FAIR HAVEN STA 0+61.00 - BEGINNING OF PROJECT
 U.S. ROUTE 4 FAIR HAVEN STA ~~32+20.00~~ - END OF WESTBOUND WORK 32+27
 U.S. ROUTE 4 FAIR HAVEN STA 10+75.00 - END OF EASTBOUND WORK
 VT. ROUTE 4A FAIR HAVEN STA 2+15.00 - MATCH STP HES 2614(I)S



BLEEDER DETAIL

NOTES:

1. BLEEDERS ARE TO BE CUT WHILE COLD PLANING AT LOCATIONS SPECIFIED BY THE RESIDENT ENGINEER.
2. ANGLE BLEEDERS TO BEST ACCEPT WATER FLOW.
3. CUT ALL BLEEDERS TO THE DEPTH OF COLD PLANING AND GRADE TO DRAIN. PAYMENT INCIDENTAL TO ITEM 210.10.
4. BLEEDERS ARE TO BE FILLED DURING PAVING WITH ITEM 490.30 OR AS DIRECTED BY THE RESIDENT ENGINEER.
5. REFLECTORIZED DRUMS MUST BE PLACED AS SHOWN TO WARN MOTORISTS OF THE GAP IN THE SHOULDER.
6. BLEEDERS SHALL NOT BE REQUIRED IF THE COLD PLANED AREAS ARE PAVED BACK THE SAME DAY AS DIRECTED BY THE RESIDENT ENGINEER.



PAVEMENT REMOVAL DETAIL

NOT TO SCALE

PAVING DETAILS SHEET	PROJECT NAME: FAIR HAVEN	
	PROJECT NUMBER: NH HES 020-K21	
	FILE NAME: 08b234.dgn	PLOT DATE: 22-FEB-2012 12:55
	PROJECT LEADER: D.E.G.	DRAWN BY: C.A.K.
DESIGNED BY: M.J.M.	CHECKED BY: D.E.G.	
DWG. NO. p06c058pd02.i	SHEET 119 OF 157	