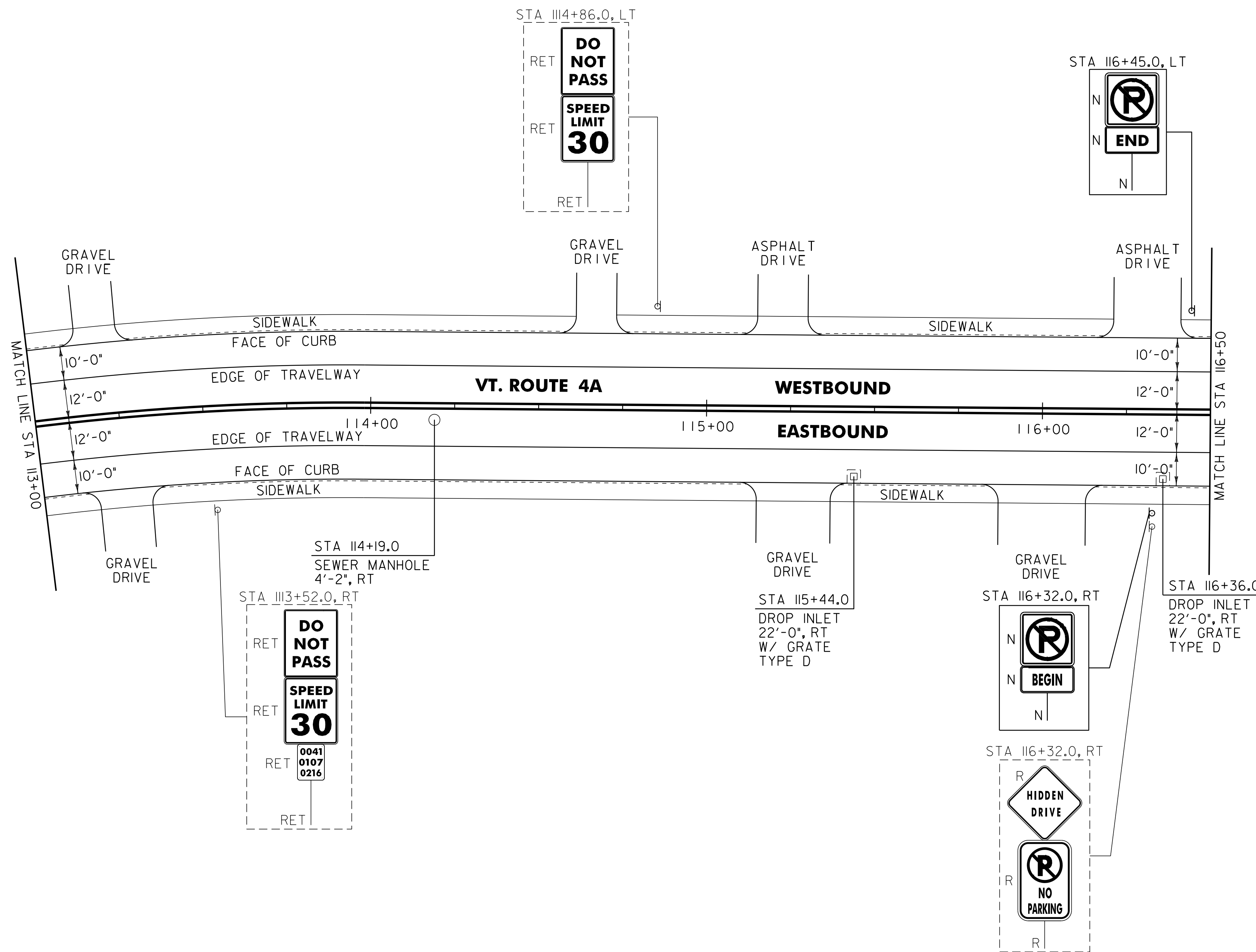


646.402 DURABLE 4 INCH WHITE LINE, THERMOPLASTIC  
(ALL LINES WILL INCLUDE EDGE LINE BREAKS AND  
RADIUS FOR TOWN HIGHWAYS)  
FAIR HAVEN:  
STA 113+00.00 - STA 116+50.00 LT & RT

646.412 DURABLE 4 INCH YELLOW LINE, THERMOPLASTIC  
(ALL LINES WILL INCLUDE C/L BREAKS FOR  
TOWN HIGHWAYS) S=SOLID, D=DASHED  
FAIR HAVEN:  
STA 113+00.00 - STA 116+50.00 LT C RT  
S - S

646.602 TEMPORARY 4 INCH WHITE LINE, PAINT  
(ALL LINES WILL INCLUDE EDGE LINE BREAKS AND  
RADIUS FOR TOWN HIGHWAYS)  
FAIR HAVEN:  
STA 113+00.00 - STA 116+50.00 LT & RT

646.612 TEMPORARY 4 INCH YELLOW LINE, PAINT  
(ALL LINES WILL INCLUDE C/L BREAKS FOR  
TOWN HIGHWAYS) S=SOLID, D=DASHED  
FAIR HAVEN:  
STA 113+00.00 - STA 116+50.00 LT C RT  
S - S



NOTE:  
I. THE CONTRACTOR SHALL REHAB. THE EXISTING DROP INLETS, CATCH BASINS OR MANHOLES TO A DEPTH AS DIRECTED BY THE RESIDENT ENGINEER. ALL REHAB. WORK WILL BE PAID FOR UNDER THE APPLICABLE REHAB. ITEM AS DIRECTED BY THE RESIDENT ENGINEER. ALL EXISTING UTILITIES MARKED "TO REMAIN" SHALL NOT BE ALTERED OR REHABILITATED UNLESS DIRECTED OTHERWISE BY THE RESIDENT ENGINEER.

<b>PROJECT LAYOUT SHEET #14</b>	PROJECT NAME: FAIR HAVEN	PLOT DATE: 22-FEB-2012 12:53
	PROJECT NUMBER: STP 2615(1)S	DRAWN BY: C.A.K.
	FILE NAME: p06c060.dgn	CHECKED BY: D.E.G.
	DESIGNED BY: M.J.M.	SHEET 101 OF 157
IPARM FILE: p06c0601014.i		

**SIGN LEGEND**  
R = REMOVE  
S = SALVAGE  
N = NEW  
RET = RETAIN  
B-B = BACK TO BACK  
EXISTING = - - - - -  
NEW = \_\_\_\_\_

604.412, 604.415 OR 604.418  
REHAB. DROP INLETS, CATCH BASINS OR MANHOLES (SEE NOTE I)

FAIR HAVEN:  
STA 115+44.0 RT  
STA 116+36.0 RT

604.42 CHANGING ELEVATION OF SEWER MANHOLES

FAIR HAVEN:  
STA 114+19.0 RT