

**646.402 DURABLE 4 INCH WHITE LINE, THERMOPLASTIC**  
 (ALL LINES WILL INCLUDE EDGE LINE BREAKS AND RADIUS FOR TOWN HIGHWAYS)  
 FAIR HAVEN:  
 STA 93+00.00 - STA 93+07.00 LT, NO PARKING HATCHING  
 STA 93+00.00 - STA 93+31.00 RT, PARKING SPACES  
 STA 93+07.00 - STA 94+90.00 LT, PARKING SPACES  
 STA 93+31.00 - STA 98+00.00 RT  
 STA 94+90.00 - STA 95+09.28 LT, NORTH PARK PLACE, NO PARKING HATCHING  
 STA 95+09.28 - STA 98+00.00 LT  
 STA 96+81.00 - STA 98+00.00 RT, NO PARKING ZONE  
 STA 97+91.00 - STA 98+00.00 LT, NO PARKING ZONE

**646.602 TEMPORARY 4 INCH WHITE LINE, PAINT**  
 (ALL LINES WILL INCLUDE EDGE LINE BREAKS AND RADIUS FOR TOWN HIGHWAYS)  
 FAIR HAVEN:  
 STA 93+00.00 - STA 93+07.00 LT, NO PARKING HATCHING  
 STA 93+00.00 - STA 93+31.00 RT, PARKING SPACES  
 STA 93+07.00 - STA 94+90.00 LT, PARKING SPACES  
 STA 93+31.00 - STA 98+00.00 RT  
 STA 94+90.00 - STA 95+09.28 LT, NORTH PARK PLACE, NO PARKING HATCHING  
 STA 95+09.28 - STA 98+00.00 LT  
 STA 96+81.00 - STA 98+00.00 RT, NO PARKING ZONE  
 STA 97+91.00 - STA 98+00.00 LT, NO PARKING ZONE

**646.612 TEMPORARY 4 INCH YELLOW LINE, PAINT**  
 (ALL LINES WILL INCLUDE C/L BREAKS FOR TOWN HIGHWAYS) S=SOLID, D=DASHED  
 FAIR HAVEN:  
 STA 93+00.00 - STA 98+00.00 LT @ RT  
 STA 95+09.28 DOUBLE SOLID LT, TH-3  
 STA 97+52.16 DOUBLE SOLID LT, TH-3

**646.682 DURABLE 24 INCH STOP BAR, PAINT**  
 FAIR HAVEN:  
 STA 97+52.16 LT, TH-3

**646.502 DURABLE CROSSWALK MARKING, THERMOPLASTIC**  
 FAIR HAVEN:  
 STA 95+68.00 LT/RT

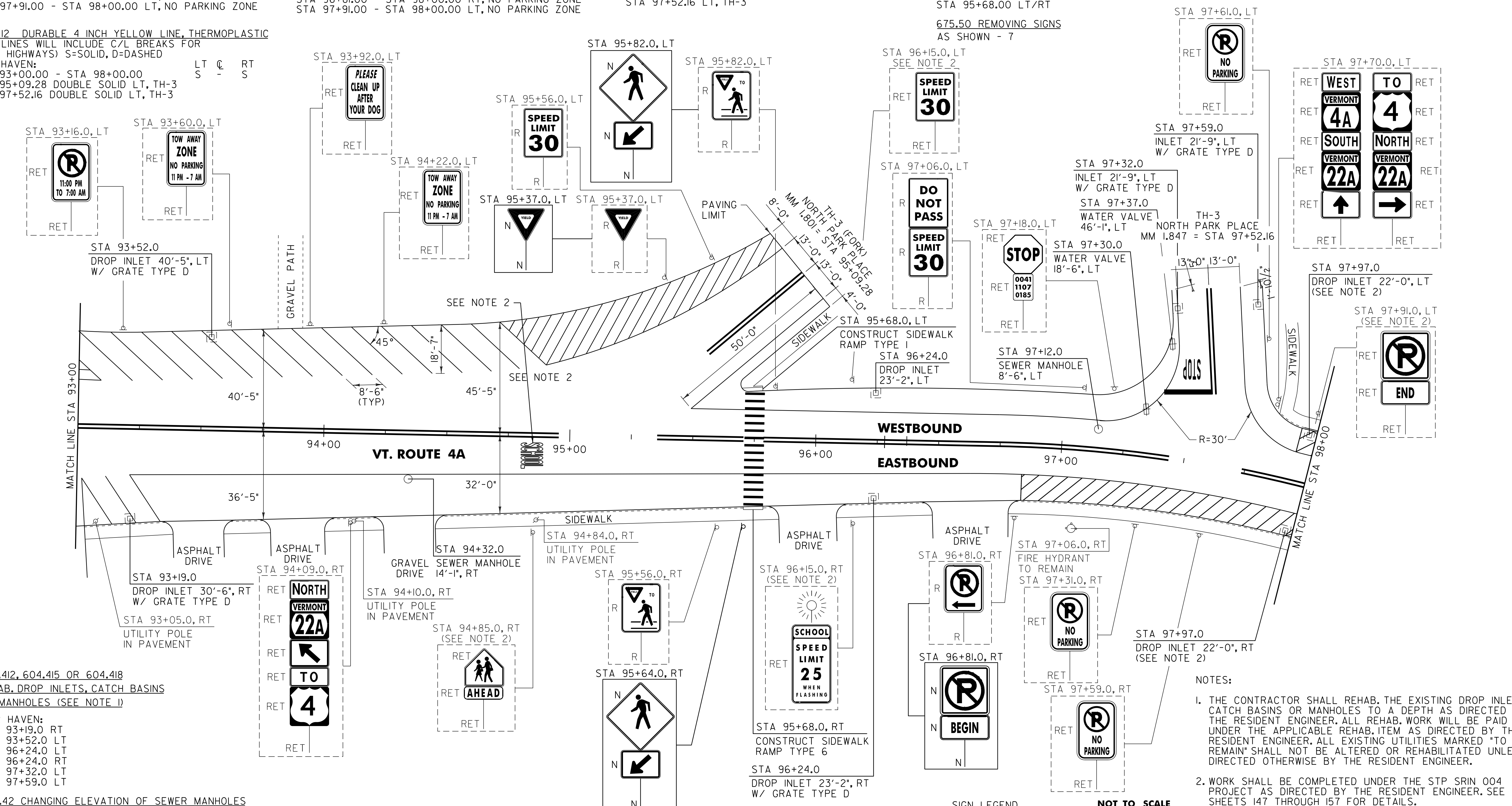
**646.702 TEMPORARY CROSSWALK MARKING, PAINT**  
 FAIR HAVEN:  
 STA 95+68.00 LT/RT

**675.50 REMOVING SIGNS AS SHOWN - 7**

**646.492 DURABLE LETTER OR SYMBOL, THERMOPLASTIC**  
 FAIR HAVEN:  
 STA 95+09.28 LT, TH-3, YIELD MARKINGS (6 EA)  
 STA 97+52.16 LT, TH-3, "S,T,O,P" (4 EA)

**646.692 TEMPORARY LETTER OR SYMBOL, PAINT**  
 FAIR HAVEN:  
 STA 95+09.28 LT, TH-3, YIELD MARKINGS (12 EA)  
 STA 97+52.16 LT, TH-3, "S,T,O,P" (8 EA)

**646.412 DURABLE 4 INCH YELLOW LINE, THERMOPLASTIC**  
 (ALL LINES WILL INCLUDE C/L BREAKS FOR TOWN HIGHWAYS) S=SOLID, D=DASHED  
 FAIR HAVEN:  
 STA 93+00.00 - STA 98+00.00 LT @ RT  
 STA 95+09.28 DOUBLE SOLID LT, TH-3  
 STA 97+52.16 DOUBLE SOLID LT, TH-3



**604.412, 604.415 OR 604.418**  
 REHAB. DROP INLETS, CATCH BASINS OR MANHOLES (SEE NOTE 1)

FAIR HAVEN:  
 STA 93+19.0 RT  
 STA 93+52.0 LT  
 STA 96+24.0 LT  
 STA 96+24.0 RT  
 STA 97+32.0 LT  
 STA 97+59.0 LT

**604.42 CHANGING ELEVATION OF SEWER MANHOLES**

FAIR HAVEN:  
 STA 94+32.0 RT  
 STA 97+12.0 LT

**629.20 ADJUST ELEVATION OF VALVE BOX**

FAIR HAVEN:  
 STA 97+30.0 LT  
 STA 97+37.0 LT

- NOTES:**
- THE CONTRACTOR SHALL REHAB. THE EXISTING DROP INLETS CATCH BASINS OR MANHOLES TO A DEPTH AS DIRECTED BY THE RESIDENT ENGINEER. ALL REHAB. WORK WILL BE PAID FOR UNDER THE APPLICABLE REHAB. ITEM AS DIRECTED BY THE RESIDENT ENGINEER. ALL EXISTING UTILITIES MARKED "TO REMAIN" SHALL NOT BE ALTERED OR REHABILITATED UNLESS DIRECTED OTHERWISE BY THE RESIDENT ENGINEER.
  - WORK SHALL BE COMPLETED UNDER THE STP SRIN 004 PROJECT AS DIRECTED BY THE RESIDENT ENGINEER. SEE SHEETS I47 THROUGH I57 FOR DETAILS.

- SIGN LEGEND**
- R = REMOVE
  - S = SALVAGE
  - N = NEW
  - RET = RETAIN
  - B-B = BACK TO BACK
  - EXISTING = - - - - -
  - NEW = \_\_\_\_\_
  - ⊙ = RETURN TO TOWN OF FAIR HAVEN

**NOT TO SCALE**

<b>PROJECT LAYOUT SHEET #10</b>	PROJECT NAME: FAIR HAVEN	PLOT DATE: 22-FEB-2012 12:53
	PROJECT NUMBER: STP 2615(1)S	DRAWN BY: C.A.K.
	FILE NAME: p06c060.dgn	CHECKED BY: D.E.G.
	DESIGNED BY: M.J.M.	SHEET 97 OF 157