

646.402 DURABLE 4 INCH WHITE LINE, THERMOPLASTIC
 (ALL LINES WILL INCLUDE EDGE LINE BREAKS AND RADIUS FOR TOWN HIGHWAYS)
 FAIR HAVEN:
 STA 83+00.00 - STA 87+60.00 LT
 STA 83+00.00 - STA 87+78.00 RT
 STA 85+12.00 - STA 87+50.00 LANE LINE LT
 STA 87+60.00 - STA 88+00.00 LT, PARKING STALL MARKINGS
 STA 87+72.00 - STA 88+00.00 LANE LINE LT
 STA 87+78.00 - STA 88+00.00 RT, PARKING STALL MARKINGS

646.602 TEMPORARY 4 INCH WHITE LINE, PAINT
 (ALL LINES WILL INCLUDE EDGE LINE BREAKS AND RADIUS FOR TOWN HIGHWAYS)
 FAIR HAVEN:
 STA 83+00.00 - STA 87+60.00 LT
 STA 83+00.00 - STA 87+78.00 RT
 STA 85+12.00 - STA 87+50.00 LANE LINE LT
 STA 87+60.00 - STA 88+00.00 LT, PARKING STALL MARKINGS
 STA 87+72.00 - STA 88+00.00 LANE LINE LT
 STA 87+78.00 - STA 88+00.00 RT, PARKING STALL MARKINGS

646.682 DURABLE 24 INCH STOP BAR, THERMOPLASTIC
 FAIR HAVEN:
 STA 85+11.36 RT, TH-8
 STA 87+70.08 RT, TH-44
 646.492 DURABLE LETTER OR SYMBOL, THERMOPLASTIC
 FAIR HAVEN:
 STA 85+11.36 RT, TH-8, "S,T,O,P" (4 EA)
 STA 85+29.30 C/L, ARROW (1 EA)
 STA 85+72.60 C/L, "O,N,L,Y" (4 EA)
 STA 86+15.90 C/L, ARROW (1 EA)
 STA 86+59.20 C/L, "O,N,L,Y" (4 EA)
 STA 87+02.50 C/L, ARROW (1 EA)
 STA 87+45.80 C/L, "O,N,L,Y" (4 EA)
 STA 87+70.08 RT, TH-44, "S,T,O,P" (4 EA)
 STA 87+92.30 C/L, ARROW (1 EA)

646.682 TEMPORARY 24 INCH STOP BAR, PAINT
 FAIR HAVEN:
 STA 85+11.36 RT, TH-8
 STA 87+70.08 RT, TH-44
 646.692 TEMPORARY LETTER OR SYMBOL, PAINT
 FAIR HAVEN:
 STA 85+11.36 RT, TH-8, "S,T,O,P" (8 EA)
 STA 85+29.30 C/L, ARROW (2 EA)
 STA 87+02.50 C/L, ARROW (2 EA)
 STA 87+70.08 RT, TH-44, "S,T,O,P" (8 EA)
 STA 87+92.30 C/L, ARROW (2 EA)

646.442 DURABLE 8 INCH WHITE LINE, THERMOPLASTIC
 FAIR HAVEN:
 STA 84+74.00 - STA 87+86.00 RT
 STA 87+47.00 - STA 87+59.00 RT
 646.452 DURABLE 8 INCH YELLOW LINE, THERMOPLASTIC
 FAIR HAVEN:
 STA 83+75.00 - STA 84+56.00 MEDIAN HATCHING
 646.502 DURABLE CROSSWALK MARKING, THERMOPLASTIC
 FAIR HAVEN:
 STA 84+63.84 LT, TH-54
 STA 85+11.36 RT, TH-8
 STA 87+70.08 RT, TH-44
 646.702 TEMPORARY CROSSWALK MARKING, PAINT
 FAIR HAVEN:
 STA 84+63.84 LT, TH-54
 STA 85+11.36 RT, TH-8
 STA 87+70.08 RT, TH-44

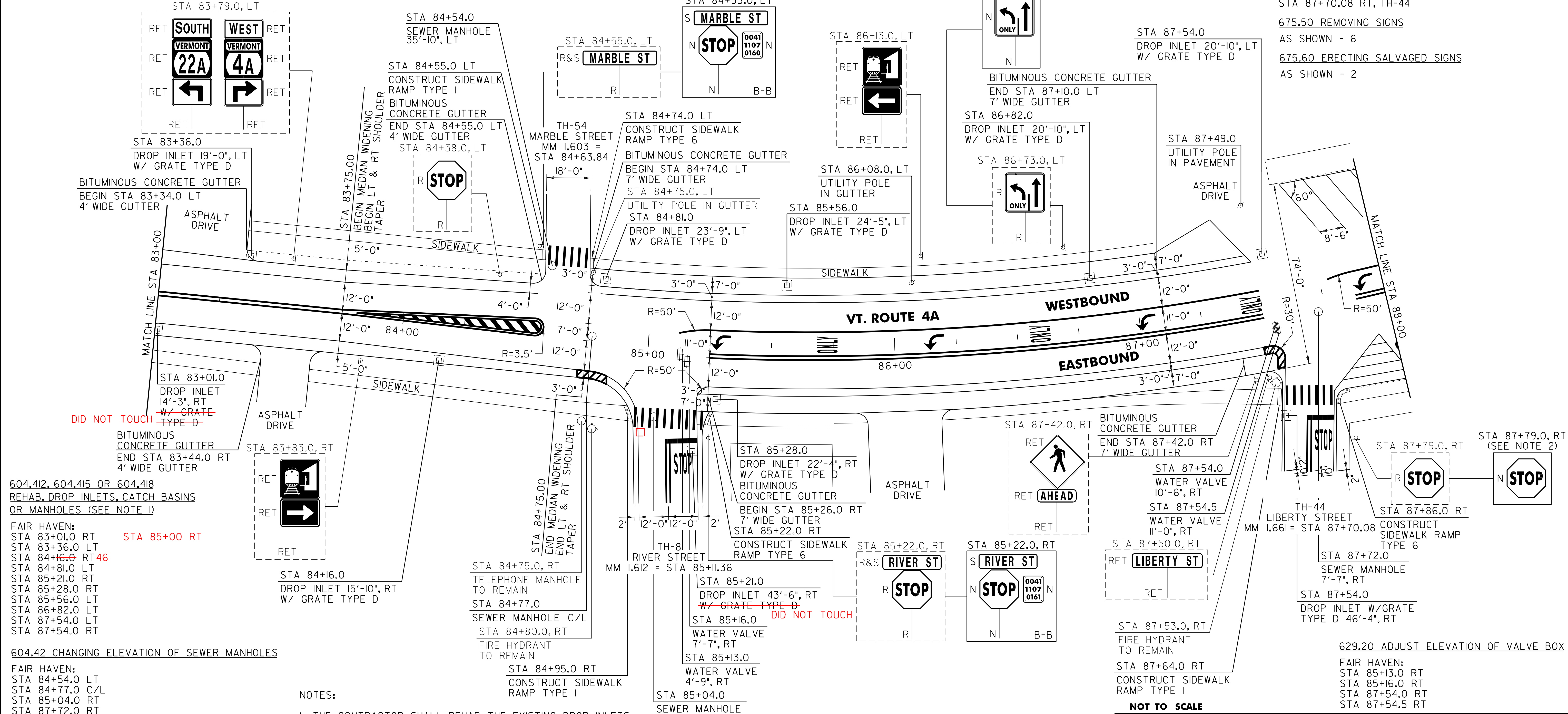
646.412 DURABLE 4 INCH YELLOW LINE, THERMOPLASTIC
 (ALL LINES WILL INCLUDE C/L BREAKS FOR TOWN HIGHWAYS) S=SOLID, D=DASHED
 FAIR HAVEN:
 STA 83+00.00 - STA 83+75.00 LT & RT
 STA 83+75.00 - STA 84+56.00 DOUBLE SOLID MEDIAN LT & RT
 STA 85+11.36 DOUBLE SOLID RT, TH-8
 STA 85+25.00 - STA 87+50.00 DOUBLE SOLID RT
 STA 87+70.08 DOUBLE SOLID RT, TH-44
 STA 87+88.00 - STA 88+00.00 DOUBLE SOLID RT

646.612 TEMPORARY 4 INCH YELLOW LINE, PAINT
 (ALL LINES WILL INCLUDE C/L BREAKS FOR TOWN HIGHWAYS) S=SOLID, D=DASHED
 FAIR HAVEN:
 STA 83+00.00 - STA 83+75.00 LT & RT
 STA 83+75.00 - STA 84+56.00 DOUBLE SOLID MEDIAN LT & RT
 STA 85+11.36 DOUBLE SOLID RT, TH-8
 STA 85+25.00 - STA 87+50.00 DOUBLE SOLID RT
 STA 87+70.08 DOUBLE SOLID RT, TH-44
 STA 87+88.00 - STA 88+00.00 DOUBLE SOLID RT

646.682 DURABLE 24 INCH STOP BAR, THERMOPLASTIC
 FAIR HAVEN:
 STA 85+11.36 RT, TH-8
 STA 87+70.08 RT, TH-44
 646.492 DURABLE LETTER OR SYMBOL, THERMOPLASTIC
 FAIR HAVEN:
 STA 85+11.36 RT, TH-8, "S,T,O,P" (4 EA)
 STA 85+29.30 C/L, ARROW (1 EA)
 STA 85+72.60 C/L, "O,N,L,Y" (4 EA)
 STA 86+15.90 C/L, ARROW (1 EA)
 STA 86+59.20 C/L, "O,N,L,Y" (4 EA)
 STA 87+02.50 C/L, ARROW (1 EA)
 STA 87+45.80 C/L, "O,N,L,Y" (4 EA)
 STA 87+70.08 RT, TH-44, "S,T,O,P" (4 EA)
 STA 87+92.30 C/L, ARROW (1 EA)

646.682 TEMPORARY 24 INCH STOP BAR, PAINT
 FAIR HAVEN:
 STA 85+11.36 RT, TH-8
 STA 87+70.08 RT, TH-44
 646.692 TEMPORARY LETTER OR SYMBOL, PAINT
 FAIR HAVEN:
 STA 85+11.36 RT, TH-8, "S,T,O,P" (8 EA)
 STA 85+29.30 C/L, ARROW (2 EA)
 STA 87+02.50 C/L, ARROW (2 EA)
 STA 87+70.08 RT, TH-44, "S,T,O,P" (8 EA)
 STA 87+92.30 C/L, ARROW (2 EA)

646.442 DURABLE 8 INCH WHITE LINE, THERMOPLASTIC
 FAIR HAVEN:
 STA 84+74.00 - STA 87+86.00 RT
 STA 87+47.00 - STA 87+59.00 RT
 646.452 DURABLE 8 INCH YELLOW LINE, THERMOPLASTIC
 FAIR HAVEN:
 STA 83+75.00 - STA 84+56.00 MEDIAN HATCHING
 646.502 DURABLE CROSSWALK MARKING, THERMOPLASTIC
 FAIR HAVEN:
 STA 84+63.84 LT, TH-54
 STA 85+11.36 RT, TH-8
 STA 87+70.08 RT, TH-44
 646.702 TEMPORARY CROSSWALK MARKING, PAINT
 FAIR HAVEN:
 STA 84+63.84 LT, TH-54
 STA 85+11.36 RT, TH-8
 STA 87+70.08 RT, TH-44



604.412, 604.415 OR 604.418
 REHAB. DROP INLETS, CATCH BASINS
 OR MANHOLES (SEE NOTE 1)

FAIR HAVEN:
 STA 83+01.0 RT
 STA 83+36.0 LT
 STA 84+16.0 RT 46
 STA 84+81.0 LT
 STA 85+21.0 RT
 STA 85+28.0 RT
 STA 85+56.0 LT
 STA 86+82.0 LT
 STA 87+54.0 LT
 STA 87+54.0 RT

604.42 CHANGING ELEVATION OF SEWER MANHOLES

FAIR HAVEN:
 STA 84+54.0 LT
 STA 84+77.0 C/L
 STA 85+04.0 RT
 STA 87+72.0 RT

616.47 BITUMINOUS CONCRETE GUTTERS
 AND TRAFFIC ISLANDS

FAIR HAVEN:
 STA 83+00.0 - STA 83+44.0 RT (2.3 TON)
 STA 83+34.0 - STA 84+55.0 LT (6.0 TON)
 STA 84+74.0 - STA 87+10.0 LT (20.4 TON)
 STA 85+26.0 - STA 87+42.0 RT (8.7 TON)

NOTES:
 1. THE CONTRACTOR SHALL REHAB. THE EXISTING DROP INLETS, CATCH BASINS OR MANHOLES TO A DEPTH AS DIRECTED BY THE RESIDENT ENGINEER. ALL REHAB. WORK WILL BE PAID FOR UNDER THE APPLICABLE REHAB. ITEM AS DIRECTED BY THE RESIDENT ENGINEER. ALL EXISTING UTILITIES MARKED "TO REMAIN" SHALL NOT BE ALTERED OR REHABILITATED UNLESS DIRECTED OTHERWISE BY THE RESIDENT ENGINEER.
 2. MOUNT SIGN USING EXISTING HARDWARE TO FACE OF BUILDING.

SIGN LEGEND
 R = REMOVE
 S = SALVAGE
 N = NEW
 RET = RETAIN
 B-B = BACK TO BACK
 EXISTING = - - - - -
 NEW = _____

NOT TO SCALE
PROJECT LAYOUT SHEET #8

PROJECT NAME: FAIR HAVEN
 PROJECT NUMBER: STP 2615(1)S
 FILE NAME: p06c060.dgn
 PROJECT LEADER: D.E.G.
 DESIGNED BY: M.J.M.
 IPARM FILE: p06c060i07.i
 PLOT DATE: 22-FEB-2012 12:53
 DRAWN BY: C.A.K.
 CHECKED BY: D.E.G.
 SHEET 95 OF 157