

646.402 DURABLE 4 INCH WHITE LINE, THERMOPLASTIC
 (ALL LINES WILL INCLUDE EDGE LINE BREAKS AND RADIUS FOR TOWN HIGHWAYS)
 FAIR HAVEN:
 STA 63+00.00 - STA 68+00.00 LT & RT

646.602 TEMPORARY 4 INCH WHITE LINE, PAINT
 (ALL LINES WILL INCLUDE EDGE LINE BREAKS AND RADIUS FOR TOWN HIGHWAYS)
 FAIR HAVEN:
 STA 63+00.00 - STA 68+00.00 LT & RT

646.412 DURABLE 3 INCH YELLOW LINE, THERMOPLASTIC
 (ALL LINES WILL INCLUDE C/L BREAKS FOR TOWN HIGHWAYS) S=SOLID, D=DASHED
 FAIR HAVEN: LT C RT
 STA 63+00.00 - STA 68+00.00 S - S
 STA 64+78.56 DOUBLE SOLID RT, TH-57

646.612 TEMPORARY 4 INCH YELLOW LINE, PAINT
 (ALL LINES WILL INCLUDE C/L BREAKS FOR TOWN HIGHWAYS) S=SOLID, D=DASHED
 FAIR HAVEN: LT C RT
 STA 63+00.00 - STA 68+00.00 S - S
 STA 64+78.56 DOUBLE SOLID RT, TH-57

646.442 DURABLE 8 INCH WHITE LINE, THERMOPLASTIC
 FAIR HAVEN:
 STA 64+23.00 - STA 64+35.00 FIRE HYDRANT NO PARKING ZONE, RT
 STA 64+76.00 - STA 64+88.00 FIRE HYDRANT NO PARKING ZONE, LT

646.482 DURABLE 24 INCH STOP BAR, THERMOPLASTIC
 FAIR HAVEN:
 STA 64+78.56 RT, TH-57

646.682 TEMPORARY 24 INCH STOP BAR, PAINT
 FAIR HAVEN:
 STA 64+78.56 RT, TH-57

646.492 DURABLE LETTER OR SYMBOL, THERMOPLASTIC
 FAIR HAVEN:
 STA 64+78.56 RT, TH-57 "S,T,O,P" (4 EA)

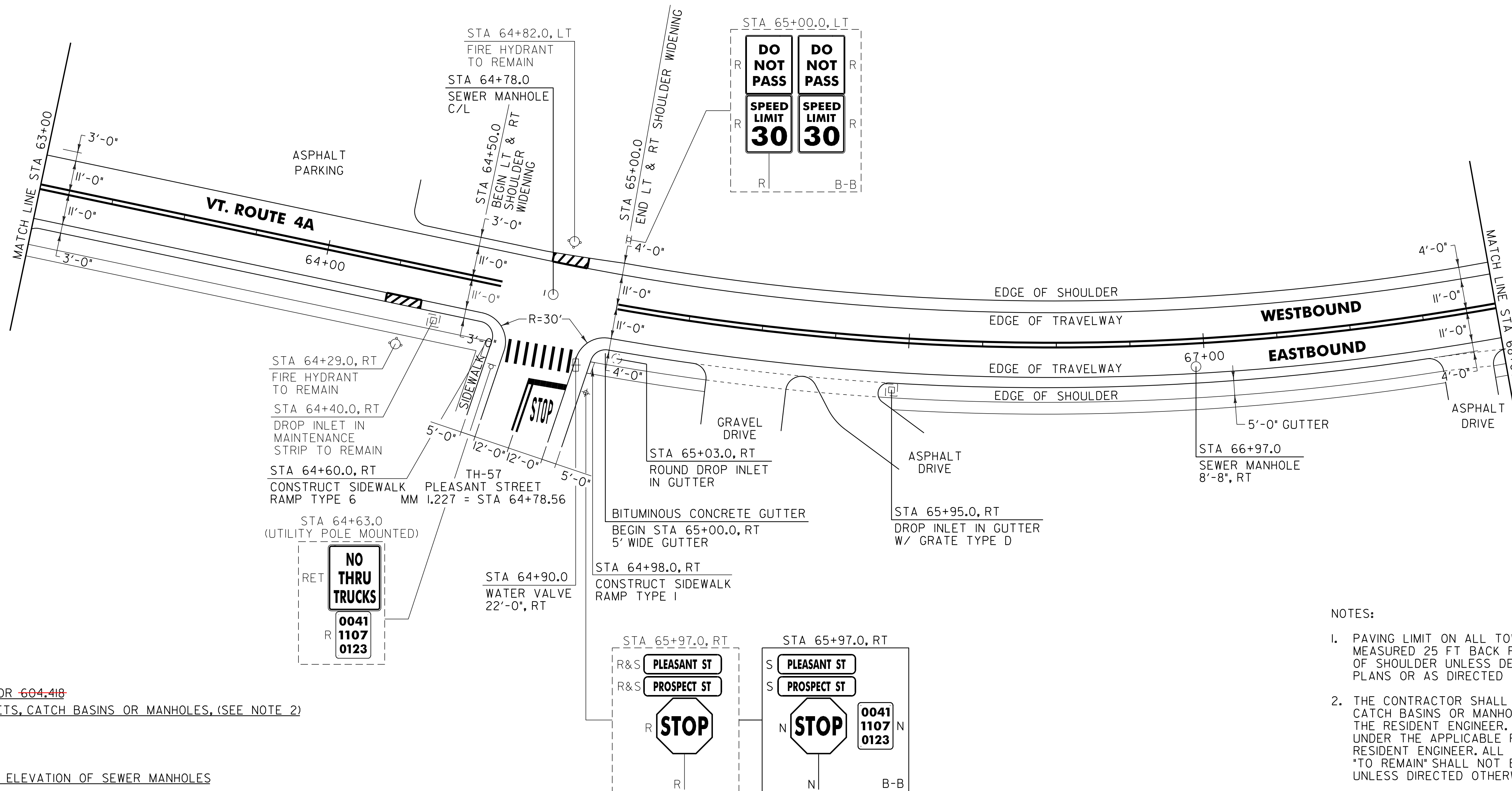
646.692 TEMPORARY LETTER OR SYMBOL, PAINT
 FAIR HAVEN:
 STA 64+78.56 RT, TH-57 "S,T,O,P" (8 EA)

646.502 DURABLE CROSSWALK MARKING, THERMOPLASTIC
 FAIR HAVEN:
 STA 64+78.56 RT, TH-57

646.702 TEMPORARY CROSSWALK MARKING, PAINT
 FAIR HAVEN:
 STA 64+78.56 RT, TH-57

675.50 REMOVING SIGNS
 AS SHOWN - 8

675.60 ERECTING SALVAGED SIGNS
 AS SHOWN - 2



- NOTES:
- PAVING LIMIT ON ALL TOWN HIGHWAYS SHALL BE MEASURED 25 FT BACK FROM VT. ROUTE 4A EDGE OF SHOULDER UNLESS DENOTED OTHERWISE ON THE PLANS OR AS DIRECTED BY THE RESIDENT ENGINEER.
 - THE CONTRACTOR SHALL REHAB. THE EXISTING DROP INLETS, CATCH BASINS OR MANHOLES TO A DEPTH AS DIRECTED BY THE RESIDENT ENGINEER. ALL REHAB. WORK WILL BE PAID FOR UNDER THE APPLICABLE REHAB. ITEM AS DIRECTED BY THE RESIDENT ENGINEER. ALL EXISTING UTILITIES MARKED "TO REMAIN" SHALL NOT BE ALTERED OR REHABILITATED UNLESS DIRECTED OTHERWISE BY THE RESIDENT ENGINEER.
 - SEE SHEET 10 FOR FIRE HYDRANT MARKING DETAIL.

NOT TO SCALE

PROJECT LAYOUT SHEET #4	PROJECT NAME: FAIR HAVEN
	PROJECT NUMBER: STP 2615(1)S
	FILE NAME: p06c060.dgn
	PLOT DATE: 22-FEB-2012 12:53
DESIGNED BY: M.J.M.	DRAWN BY: C.A.K.
IPARM FILE: p06c060104.i	CHECKED BY: D.E.G.
	SHEET 91 OF 157

SIGN LEGEND
 R = REMOVE
 S = SALVAGE
 N = NEW
 RET = RETAIN
 B-B = BACK TO BACK
 EXISTING = - - - - -
 NEW = _____

604.412, 604.415 OR 604.418
 REHAB. DROP INLETS, CATCH BASINS OR MANHOLES, (SEE NOTE 2)

FAIR HAVEN:
 STA 65+03.0 RT
 STA 65+95.0 RT

604.42 CHANGING ELEVATION OF SEWER MANHOLES

FAIR HAVEN:
 STA 64+78.0 C/L
 STA 66+97.0 RT

616.47 BITUMINOUS CONCRETE GUTTERS AND TRAFFIC ISLANDS

FAIR HAVEN:
 STA 65+00.0 - STA 68+00.0 RT (18.6 TON)

629.20 ADJUST ELEVATION OF VALVE BOX

FAIR HAVEN:
 STA 64+90.0 RT