

646.402 DURABLE 4 INCH WHITE LINE, THERMOPLASTIC
 (ALL LINES WILL INCLUDE EDGE LINE BREAKS AND RADIUS FOR TOWN HIGHWAYS)
 FAIR HAVEN:
 STA 53+00.00 - STA 58+00.00 LT & RT

646.602 TEMPORARY 4 INCH WHITE LINE, PAINT
 (ALL LINES WILL INCLUDE EDGE LINE BREAKS AND RADIUS FOR TOWN HIGHWAYS)
 FAIR HAVEN:
 STA 53+00.00 - STA 58+00.00 LT & RT

646.412 DURABLE 4 INCH YELLOW LINE, THERMOPLASTIC
 (ALL LINES WILL INCLUDE C/L BREAKS FOR TOWN HIGHWAYS) S=SOLID, D=DASHED
 FAIR HAVEN:
 STA 53+00.00 - STA 58+00.00 LT C RT S
 STA 57+55.20 DOUBLE SOLID RT, TH-55

646.612 TEMPORARY 4 INCH YELLOW LINE, PAINT
 (ALL LINES WILL INCLUDE C/L BREAKS FOR TOWN HIGHWAYS) S=SOLID, D=DASHED
 FAIR HAVEN:
 STA 53+00.00 - STA 58+00.00 LT C RT S
 STA 57+55.20 DOUBLE SOLID RT, TH-55

646.442 DURABLE 8 INCH WHITE LINE, THERMOPLASTIC
 FAIR HAVEN:
 STA 56+35.00 - STA 56+47.00 FIRE HYDRANT NO PARKING ZONE, RT

646.482 TEMPORARY 24 INCH STOP BAR, THERMOPLASTIC

FAIR HAVEN:
 STA 57+55.20 RT, TH-55

646.682 TEMPORARY 24 INCH STOP BAR, PAINT

FAIR HAVEN:
 STA 57+55.20 RT, TH-55

646.492 DURABLE LETTER OR SYMBOL, THERMOPLASTIC

FAIR HAVEN:
 STA 57+55.20 RT, TH-55 "S,T,O,P" (4 EA)

646.692 TEMPORARY LETTER OR SYMBOL, PAINT

FAIR HAVEN:
 STA 57+55.20 RT, TH-55 "S,T,O,P" (8 EA)

646.502 DURABLE CROSSWALK MARKING, THERMOPLASTIC

FAIR HAVEN:
 STA 57+55.20 RT, TH-55

646.702 TEMPORARY CROSSWALK MARKING, PAINT

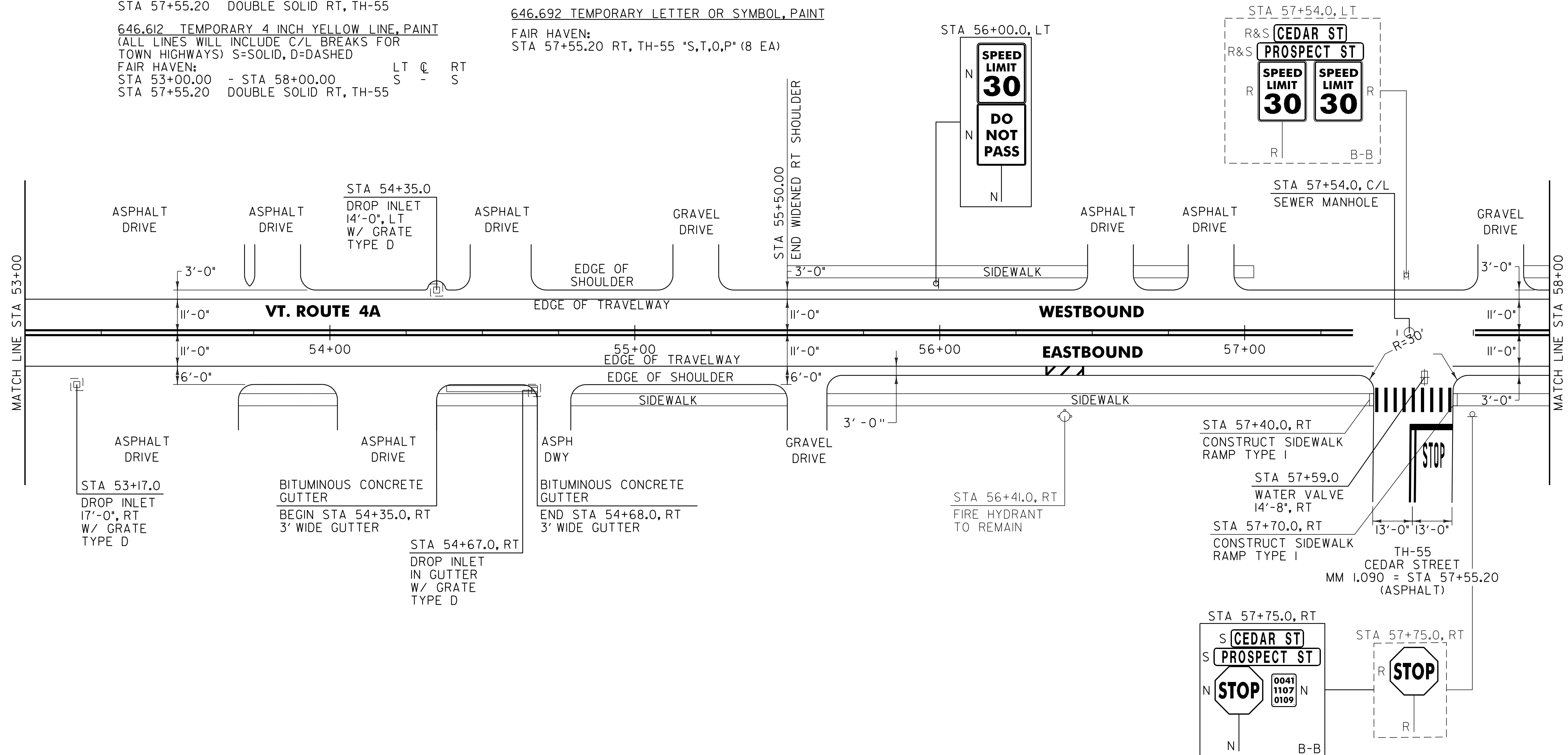
FAIR HAVEN:
 STA 57+55.20 RT, TH-55

675.50 REMOVING SIGNS

AS SHOWN - 5

675.60 ERECTING SALVAGED SIGNS

AS SHOWN - 2



604.412, 604.415 OR 604.418
 REHAB. DROP INLETS, CATCH BASINS OR MANHOLES (SEE NOTE 2)

FAIR HAVEN:
 STA 53+17.0 RT
 STA 54+35.0 LT
 STA 54+67.0 RT

604.42 CHANGING ELEVATION OF SEWER MANHOLES

FAIR HAVEN:
 STA 57+54.0 C/L

616.47 BITUMINOUS CONCRETE GUTTERS AND TRAFFIC ISLANDS

FAIR HAVEN:
 STA 54+35.0 - STA 54+68.0 RT (1.2 TON)

629.20 ADJUST ELEVATION OF VALVE BOX

FAIR HAVEN:
 STA 57+59.0 RT

NOTES:

- PAVING LIMIT ON ALL TOWN HIGHWAYS SHALL BE MEASURED 25 FT BACK FROM VT. ROUTE 4A EDGE OF SHOULDER UNLESS DENOTED OTHERWISE ON THE PLANS OR AS DIRECTED BY THE RESIDENT ENGINEER.
- THE CONTRACTOR SHALL REHAB. THE EXISTING DROP INLETS, CATCH BASINS OR MANHOLES TO A DEPTH AS DIRECTED BY THE RESIDENT ENGINEER. ALL REHAB. WORK WILL BE PAID FOR UNDER THE APPLICABLE REHAB. ITEM AS DIRECTED BY THE RESIDENT ENGINEER. ALL EXISTING UTILITIES MARKED "TO REMAIN" SHALL NOT BE ALTERED OR REHABILITATED UNLESS DIRECTED OTHERWISE BY THE RESIDENT ENGINEER.
- SEE SHEET 10 FOR FIRE HYDRANT PAVING MARKING DETAIL.

SIGN LEGEND
 R = REMOVE
 S = SALVAGE
 N = NEW
 RET = RETAIN
 B-B = BACK TO BACK
 EXISTING = - - - - -
 NEW = _____

NOT TO SCALE

PROJECT LAYOUT SHEET #2	PROJECT NAME: FAIR HAVEN	PLOT DATE: 22-FEB-2012 12:55
	PROJECT NUMBER: STP 2615(1)S	DRAWN BY: C.A.K.
	FILE NAME: p06c060.dgn	CHECKED BY: D.E.G.
	DESIGNED BY: M.J.M.	SHEET 89 OF 157
	IPARM FILE: p06c060i02.i	