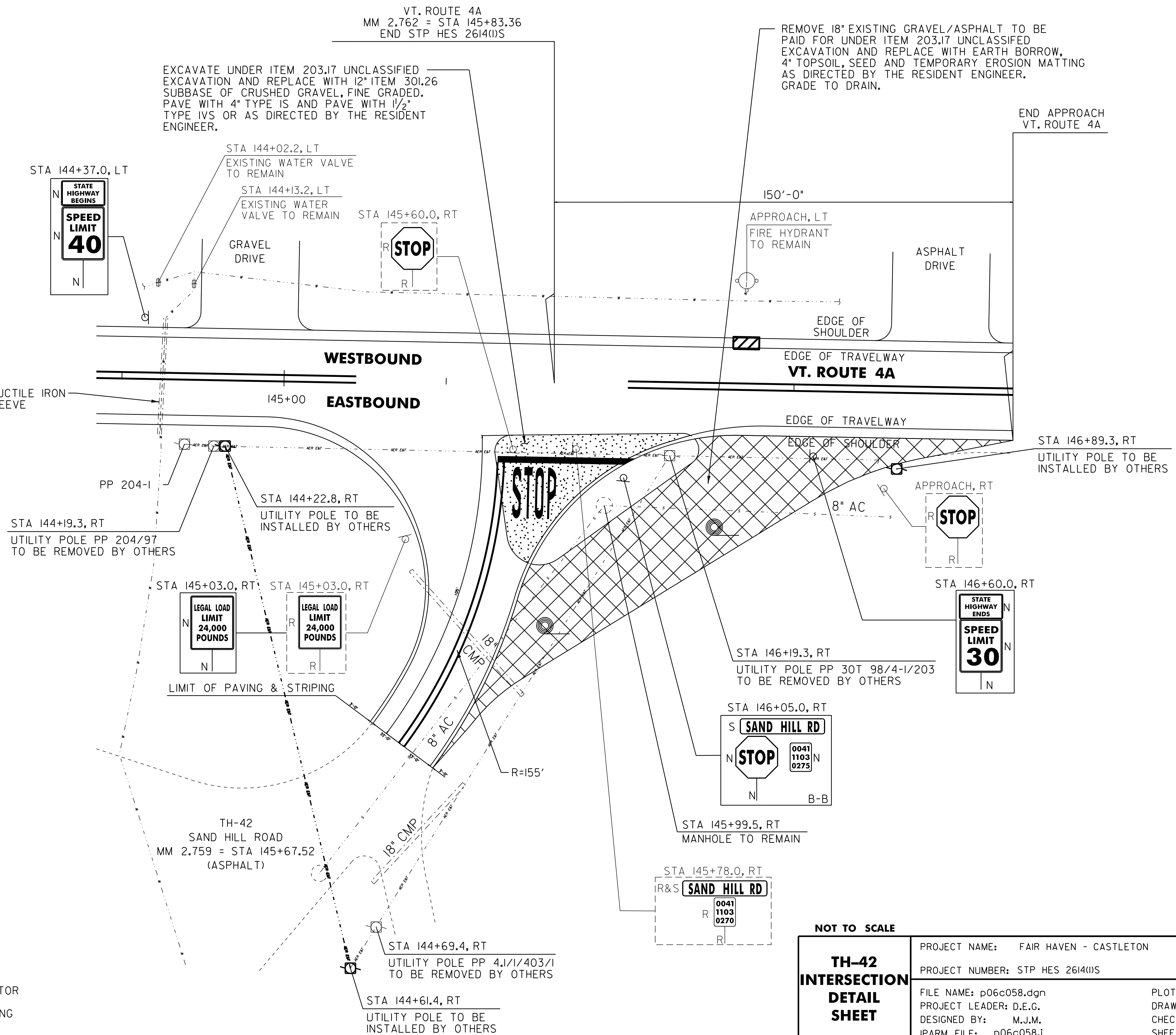


675.50 REMOVING SIGNS  
AS SHOWN - 5

675.60 ERECTING SALVAGED SIGNS  
AS SHOWN - 1

- 646.402 DURABLE 4 INCH WHITE LINE, THERMOPLASTIC  
CASTLETON:  
STA 145+67.52 SOLID EDGE LINES RT, T-42
- 646.602 TEMPORARY 4 INCH WHITE LINE, PAINT  
CASTLETON:  
STA 145+67.52 SOLID EDGE LINES RT, T-42
- 646.412 DURABLE 4 INCH YELLOW LINE, THERMOPLASTIC  
CASTLETON:  
STA 145+67.52 DOUBLE SOLID RT, T-42
- 646.612 TEMPORARY 4 INCH YELLOW LINE, PAINT  
CASTLETON:  
STA 145+67.52 DOUBLE SOLID RT, T-42
- 646.442 DURABLE 8 INCH WHITE LINE, THERMOPLASTIC  
CASTLETON:  
VT. ROUTE 4A APPROACH FIRE HYDRANT NO PARKING ZONE, LT
- 646.482 DURABLE 24 INCH STOP BAR, THERMOPLASTIC  
CASTLETON:  
STA 145+67.52 RT, T-42
- 646.682 TEMPORARY 24 INCH STOP BAR, PAINT  
CASTLETON:  
STA 145+67.52 RT, T-42
- 646.492 DURABLE LETTER OR SYMBOL, THERMOPLASTIC  
CASTLETON:  
STA 145+67.52 RT, T-42 "S,T,O,P" (4 EA)
- 646.692 TEMPORARY LETTER OR SYMBOL, PAINT  
CASTLETON:  
STA 145+67.52 RT, T-42 "S,T,O,P" (8 EA)
- 653.20 TEMPORARY EROSION MATTING  
CASTLETON:  
STA 145+67.52 RT, T-42 (376 SY)



**LEGEND**

 TEMPORARY EROSION MATTING

- NOTES:
1. PAVING LIMIT ON ALL TOWN HIGHWAYS SHALL BE MEASURED 25 FT BACK FROM VT. ROUTE 4A EDGE OF SHOULDER UNLESS DENOTED OTHERWISE ON THE PLANS OR AS DIRECTED BY THE RESIDENT ENGINEER.
  2. SEE SHEET 10 FOR FIRE HYDRANT PAVEMENT MARKING DETAIL.
  3. THERE ARE EXISTING UNDERGROUND UTILITIES LOCATED THROUGHOUT THE VT. ROUTE 4A CORRIDOR IN THE PROJECT AREA. THE CONTRACTOR IS RESPONSIBLE FOR CONTACTING "DIG SAFE" AT 1-888-344-7233 TO DETERMINE THE LOCATIONS OF THESE UTILITIES PRIOR TO PERFORMING ANY SUBSURFACE OPERATIONS.

<b>TH-42 INTERSECTION DETAIL SHEET</b>	<b>NOT TO SCALE</b>	
	PROJECT NAME: FAIR HAVEN - CASTLETON	PLOT DATE: 22-FEB-2012 12:49
	PROJECT NUMBER: STP HES 2614(1)S	DRAWN BY: C.A.K.
	FILE NAME: p06c058.dgn	CHECKED BY: D.E.G.
	DESIGNED BY: M.J.M.	SHEET 45 OF 157
	IPARM FILE: p06c058.i	