

646.402 DURABLE 4 INCH WHITE LINE, THERMOPLASTIC
 (ALL LINES WILL INCLUDE EDGE LINE BREAKS AND
 RADIUS FOR TOWN HIGHWAYS)
 FAIR HAVEN:
 STA 25+00.00 - STA 37+50.00 LT & RT

646.602 TEMPORARY 4 INCH WHITE LINE, PAINT
 (ALL LINES WILL INCLUDE EDGE LINE BREAKS AND
 RADIUS FOR TOWN HIGHWAYS)
 FAIR HAVEN:
 STA 25+00.00 - STA 37+50.00 LT & RT

646.412 DURABLE 4 INCH YELLOW LINE, THERMOPLASTIC
 (ALL LINES WILL INCLUDE C/L BREAKS FOR
 TOWN HIGHWAYS) S=SOLID, D=DASHED
 FAIR HAVEN: LT C RT
 STA 25+00.00 - STA 37+50.00 S - S
 STA 28+67.04 DOUBLE SOLID RT, TH-9

646.612 TEMPORARY 4 INCH YELLOW LINE, PAINT
 (ALL LINES WILL INCLUDE C/L BREAKS FOR
 TOWN HIGHWAYS) S=SOLID, D=DASHED
 FAIR HAVEN: LT C RT
 STA 25+00.00 - STA 37+50.00 S - S
 STA 28+67.04 DOUBLE SOLID RT, TH-9

646.482 DURABLE 24 INCH STOP BAR, THERMOPLASTIC
 FAIR HAVEN:
 STA 28+67.04 RT, TH-9

646.682 TEMPORARY 24 INCH STOP BAR, PAINT
 FAIR HAVEN:
 STA 28+67.04 RT, TH-9

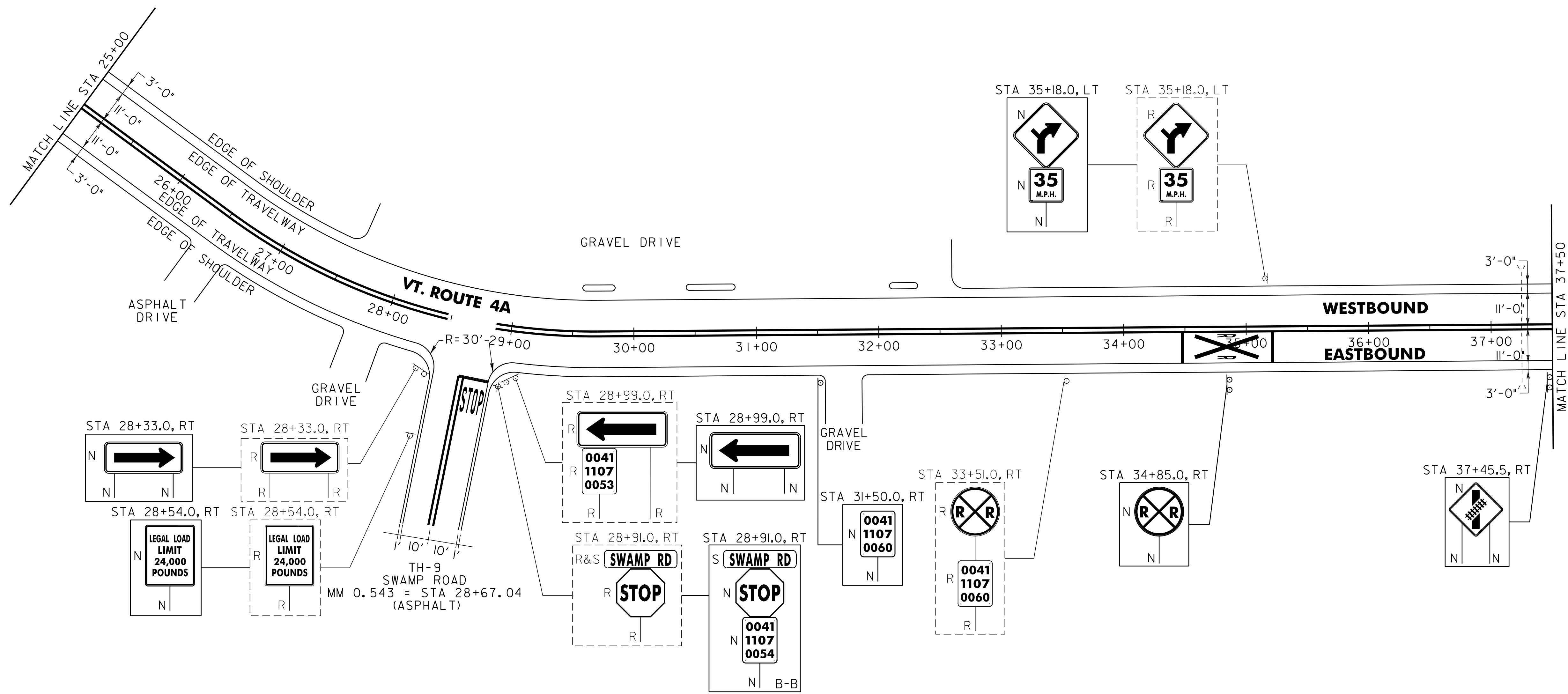
646.492 DURABLE LETTER OR SYMBOL, THERMOPLASTIC
 FAIR HAVEN:
 STA 28+67.04 RT, TH-9 "S,T,O,P" (4 EA)

646.692 TEMPORARY LETTER OR SYMBOL, PAINT
 FAIR HAVEN:
 STA 28+67.04 RT, TH-9 "S,T,O,P" (8 EA)

646.512 DURABLE RAILROAD CROSSING SYMBOL, THERMOPLASTIC
 FAIR HAVEN:
 STA 34+85.0 RT

646.712 TEMPORARY RAILROAD CROSSING SYMBOL, PAINT
 FAIR HAVEN:
 STA 34+85.0 RT

675.50 REMOVING SIGNS
 AS SHOWN - 10
 675.60 ERECTING SALVAGED SIGNS
 AS SHOWN - 1



NOTE:
 I. PAVING LIMIT ON ALL TOWN HIGHWAYS SHALL BE MEASURED
 25 FT BACK FROM VT. ROUTE 4A EDGE OF SHOULDER UNLESS
 DENOTED OTHERWISE ON THE PLANS OR AS DIRECTED BY
 THE RESIDENT ENGINEER.

SIGN LEGEND
 R = REMOVE
 S = SALVAGE
 N = NEW
 RET = RETAIN
 B-B = BACK TO BACK
 EXISTING = - - - - -
 NEW = _____

PROJECT LAYOUT SHEET #4	NOT TO SCALE	
	PROJECT NAME: FAIR HAVEN - CASTLETON	
	PROJECT NUMBER: STP HES 2614(0)S	
	FILE NAME: p06c058.dgn	PLOT DATE: 22-FEB-2012 12:47
	PROJECT LEADER: D.E.G.	DRAWN BY: C.A.K.
	DESIGNED BY: M.J.M.	CHECKED BY: D.E.G.
	IPARM FILE: p06c058104.i	SHEET 25 OF 157