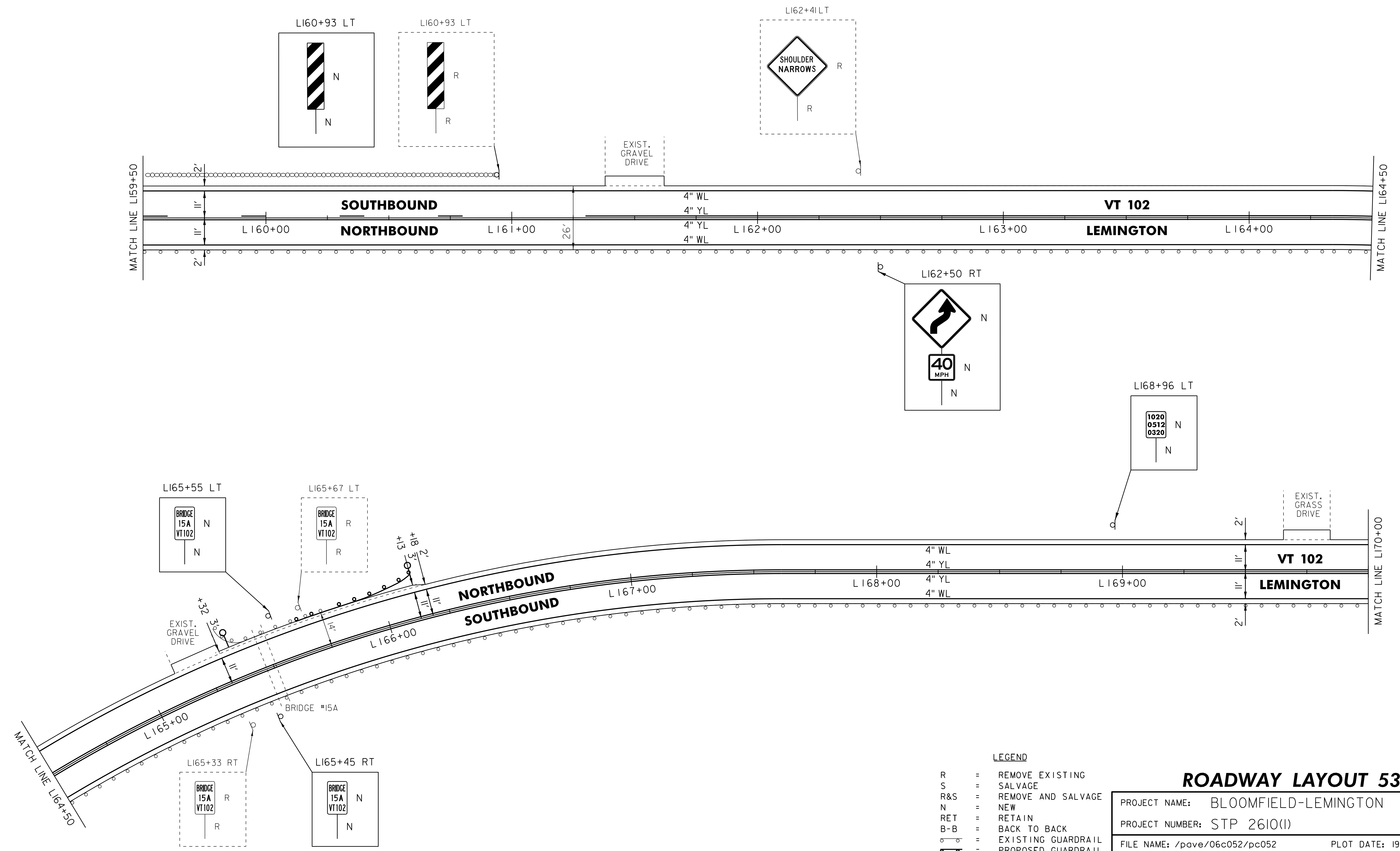


646.602 TEMPORARY 4" WHITE LINE, PAINT
 646.402 DURABLE 4" WHITE LINE, THERMOPLASTIC OR
 646.403 DURABLE 4" WHITE LINE, EPOXY PAINT OR
 646.404 DURABLE 4" WHITE LINE, POLYUREA,
 L159+50 TO L170+00 SOLID LT & RT

646.612 TEMPORARY 4" YELLOW LINE, PAINT
 646.412 DURABLE 4" YELLOW LINE, THERMOPLASTIC OR
 646.413 DURABLE 4" YELLOW LINE, EPOXY PAINT OR
 646.414 DURABLE 4" YELLOW LINE, POLYUREA,
 L159+50 TO L161+30 DASHED LT, SOLID RT
 L161+30 TO L170+00 SOLID LT & RT

621.20 STEEL BEAM GUARDRAIL, GALVANIZED
 L165+63 TO L165+75.5 LT
 621.50 MANUFACTURED
 TERMINAL SECTION, FLARED
 L165+75.5 TO L166+13 LT
 621.80 REMOVAL AND DISPOSAL OF GUARDRAIL
 L165+63 TO L166+13 LT

900.620 SPECIAL PROVISION
 (DELINEATOR WITH STEEL POST)
 L165+36 LT
 L166+13 LT
 675.50 REMOVING SIGNS
 AS SHOWN - 4



LEGEND

R	=	REMOVE EXISTING
S	=	SALVAGE
R&S	=	REMOVE AND SALVAGE
N	=	NEW
RET	=	RETAIN
B-B	=	BACK TO BACK
	=	EXISTING GUARDRAIL
	=	PROPOSED GUARDRAIL
YL	=	YELLOW LINE
WL	=	WHITE LINE
	=	DELINEATOR

ROADWAY LAYOUT 53

PROJECT NAME:	BLOOMFIELD-LEMINGTON
PROJECT NUMBER:	STP 2610(I)
FILE NAME:	/pave/06c052/pc052
PROJECT LEADER:	PTS
DESIGNED BY:	NLL
IPARM FILE NAME:	06C052.67
PLOT DATE:	19-JUN-2013 17:00
DRAWN BY:	SNG
CHECKED BY:	PTS
SHEET	67 OF 82

NOT TO SCALE