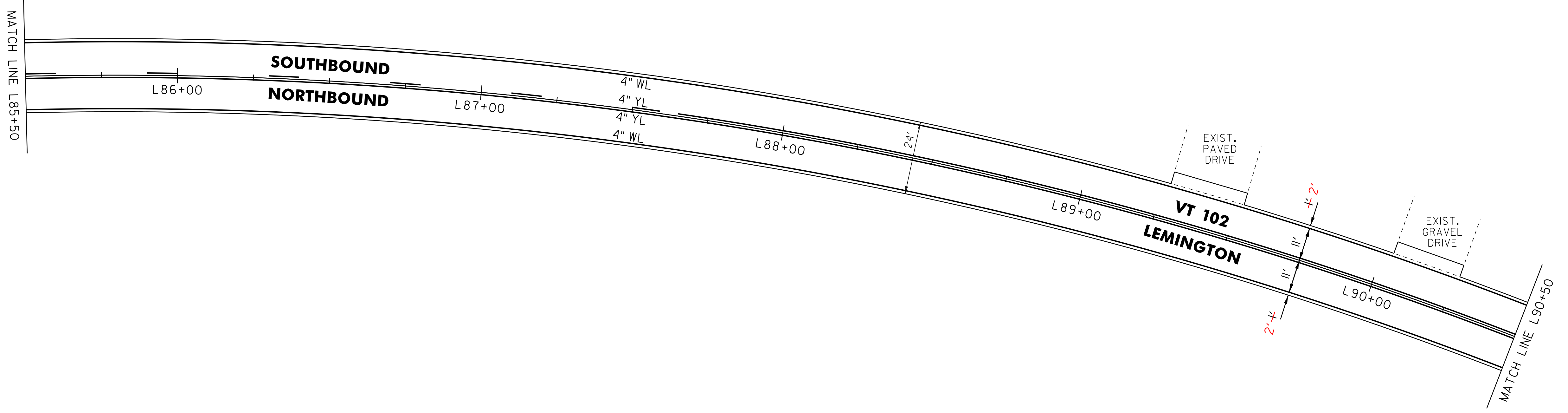
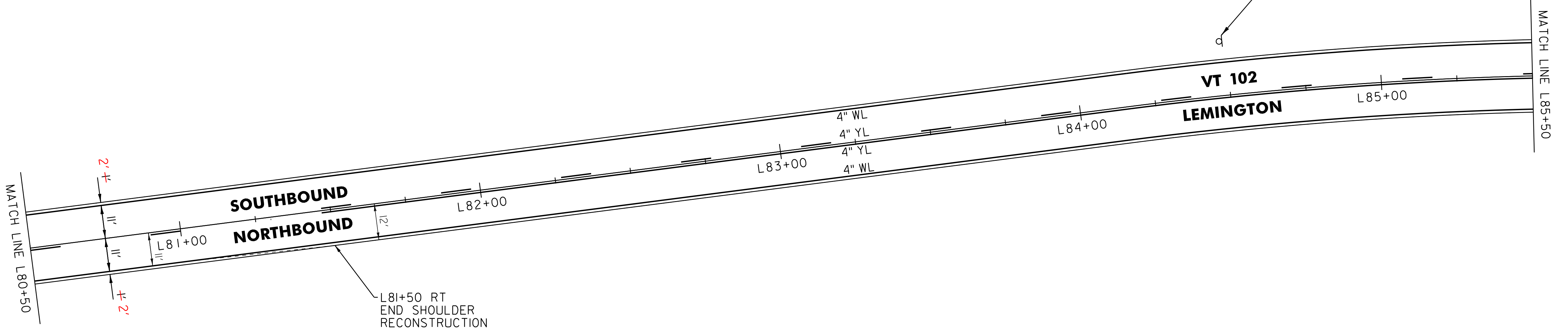
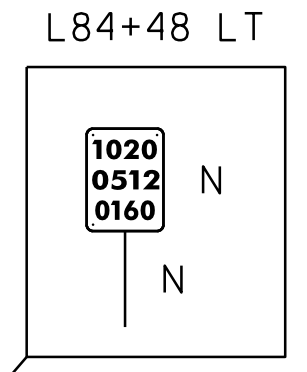


646.602 TEMPORARY 4" WHITE LINE, PAINT
 646.402 DURABLE 4" WHITE LINE, THERMOPLASTIC OR
 646.403 DURABLE 4" WHITE LINE, EPOXY PAINT OR
 646.404 DURABLE 4" WHITE LINE, POLYUREA,
 L80+50 TO L90+50 SOLID LT & RT
 646.612 TEMPORARY 4" YELLOW LINE, PAINT
 646.412 DURABLE 4" YELLOW LINE, THERMOPLASTIC OR
 646.413 DURABLE 4" YELLOW LINE, EPOXY PAINT OR
 646.414 DURABLE 4" YELLOW LINE, POLYUREA,
 L80+50 TO L81+47 DASHED CL
 L81+47 TO L87+65 DASHED LT, SOLID RT
 L87+65 TO L90+50 SOLID LT & RT



LEGEND

- R = REMOVE EXISTING
- S = SALVAGE
- R&S = REMOVE AND SALVAGE
- N = NEW
- RET = RETAIN
- B-B = BACK TO BACK
- = EXISTING GUARDRAIL
- = PROPOSED GUARDRAIL
- YL = YELLOW LINE
- WL = WHITE LINE
- = DELINEATOR

ROADWAY LAYOUT 43

PROJECT NAME:	BLOOMFIELD-LEMINGTON
PROJECT NUMBER:	STP 2610(I)
FILE NAME:	/pave/06c052/pc052
PROJECT LEADER:	PTS
DESIGNED BY:	NLL
IPARM FILE NAME:	06C052.57
PLOT DATE:	19-JUN-2013 17:00
DRAWN BY:	SNG
CHECKED BY:	PTS
SHEET	57 OF 82

NOT TO SCALE