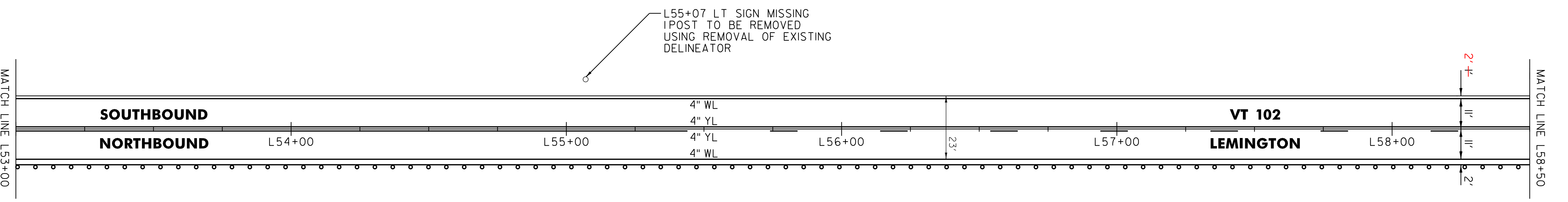
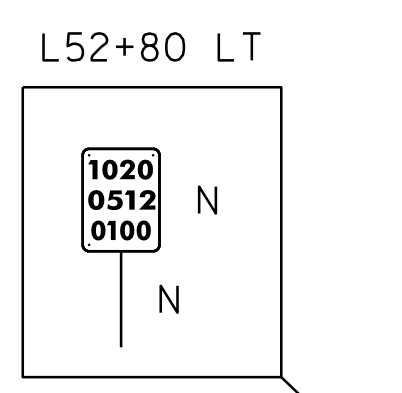
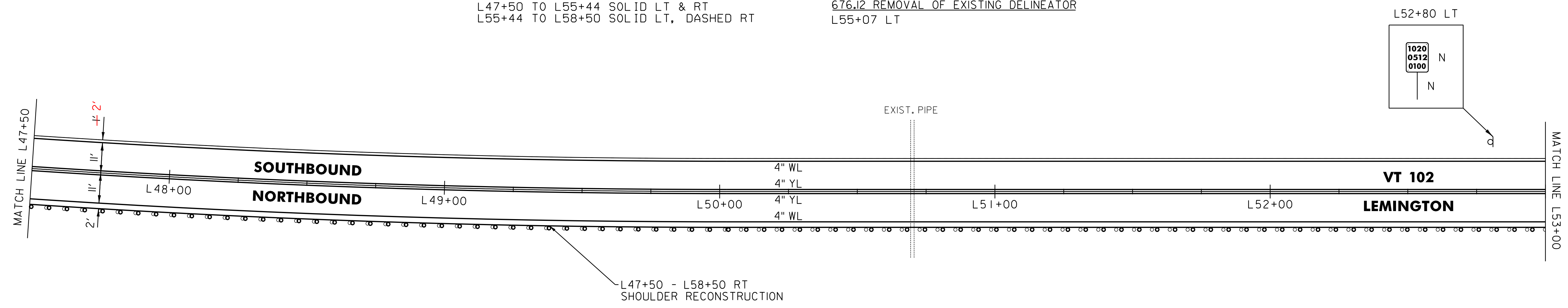


646.602 TEMPORARY 4" WHITE LINE, PAINT
 646.402 DURABLE 4" WHITE LINE, THERMOPLASTIC OR
 646.403 DURABLE 4" WHITE LINE, EPOXY PAINT OR
 646.404 DURABLE 4" WHITE LINE, POLYUREA,
 L47+50 TO L58+50 SOLID LT & RT
 646.612 TEMPORARY 4" YELLOW LINE, PAINT
 646.412 DURABLE 4" YELLOW LINE, THERMOPLASTIC OR
 646.413 DURABLE 4" YELLOW LINE, EPOXY PAINT OR
 646.414 DURABLE 4" YELLOW LINE, POLYUREA,
 L47+50 TO L55+44 SOLID LT & RT
 L55+44 TO L58+50 SOLID LT, DASHED RT

621.20 STEEL BEAM GUARDRAIL, GALVANIZED
 L47+50 TO L51+61 RT
 621.205 STEEL BEAM GUARDRAIL,
 GALVANIZED W/8' POSTS
 L51+61 TO L58+50 RT
 621.80 REMOVAL AND DISPOSAL OF GUARDRAIL
 L47+50 TO L58+50 RT
 676.12 REMOVAL OF EXISTING DELINEATOR
 L55+07 LT



NOT TO SCALE

- LEGEND**
- R = REMOVE EXISTING
 - S = SALVAGE
 - R&S = REMOVE AND SALVAGE
 - N = NEW
 - RET = RETAIN
 - B-B = BACK TO BACK
 - = EXISTING GUARDRAIL
 - = PROPOSED GUARDRAIL
 - YL = YELLOW LINE
 - WL = WHITE LINE
 - = DELINEATOR

ROADWAY LAYOUT 40

PROJECT NAME: BLOOMFIELD-LEMINGTON
 PROJECT NUMBER: STP 2610(I)

FILE NAME: /pave/06c052/pc052 PLOT DATE: 19-JUN-2013 17:00
 PROJECT LEADER: PTS DRAWN BY: SNG
 DESIGNED BY: NULL CHECKED BY: PTS
 IPARM FILE NAME: 06C052.54 SHEET 54 OF 82