

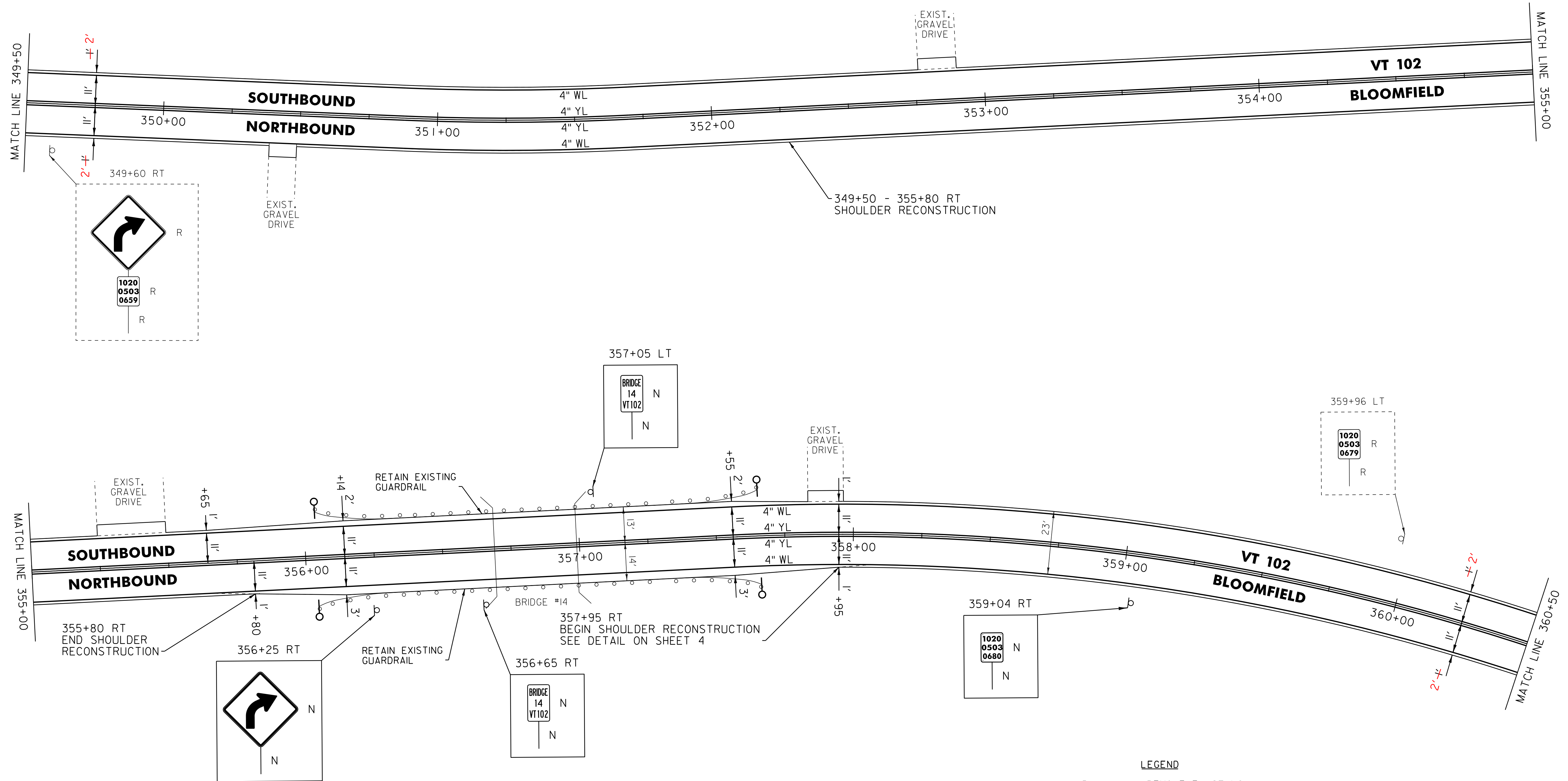
646.602 TEMPORARY 4" WHITE LINE, PAINT
 646.402 DURABLE 4" WHITE LINE, THERMOPLASTIC OR
 646.403 DURABLE 4" WHITE LINE, EPOXY PAINT OR
 646.404 DURABLE 4" WHITE LINE, POLYUREA,
 349+50 TO 360+50 SOLID LT & RT

646.612 TEMPORARY 4" YELLOW LINE, PAINT
 646.412 DURABLE 4" YELLOW LINE, THERMOPLASTIC OR
 646.413 DURABLE 4" YELLOW LINE, EPOXY PAINT OR
 646.414 DURABLE 4" YELLOW LINE, POLYUREA,
 349+50 TO 360+50 SOLID LT & RT

900.620 SPECIAL PROVISION
 (DELINEATOR WITH STEEL POST)

356+04 LT
 356+04 RT
 357+66 LT
 357+66 RT

675.50 REMOVING SIGNS
 AS SHOWN - 3



LEGEND

R	=	REMOVE EXISTING
S	=	SALVAGE
R&S	=	REMOVE AND SALVAGE
N	=	NEW
RET	=	RETAIN
B-B	=	BACK TO BACK
	=	EXISTING GUARDRAIL
	=	PROPOSED GUARDRAIL
YL	=	YELLOW LINE
WL	=	WHITE LINE
	=	DELINEATOR

ROADWAY LAYOUT 34

PROJECT NAME: BLOOMFIELD-LEMINGTON

PROJECT NUMBER: STP 2610(I)

FILE NAME: /pave/06c052/pc052

PROJECT LEADER: PTS

DESIGNED BY: NLL

IPARM FILE NAME: 06C052.48

PLOT DATE: 19-JUN-2013 16:59

DRAWN BY: SNG

CHECKED BY: PTS

SHEET 48 OF 82

NOT TO SCALE