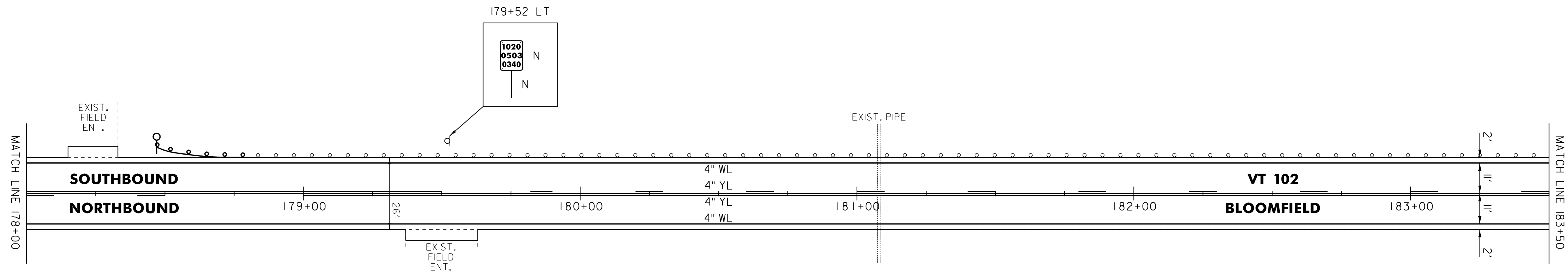
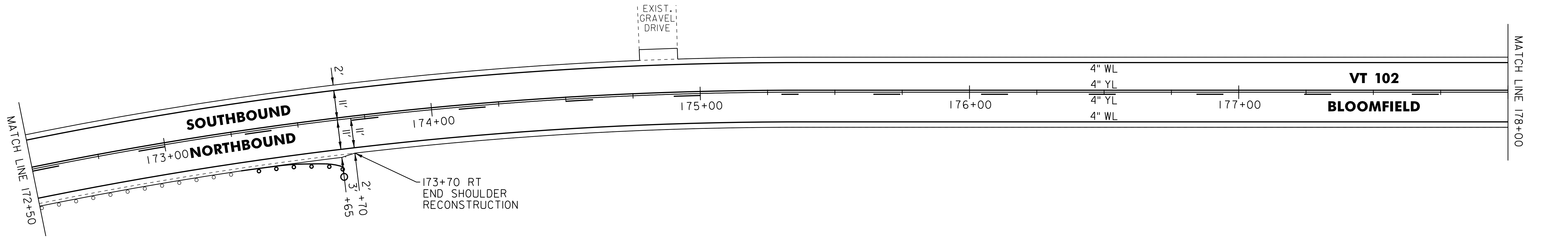


646.602 TEMPORARY 4" WHITE LINE, PAINT
 646.402 DURABLE 4" WHITE LINE, THERMOPLASTIC OR
 646.403 DURABLE 4" WHITE LINE, EPOXY PAINT OR
 646.404 DURABLE 4" WHITE LINE, POLYUREA,
 172+50 TO 183+50 SOLID LT & RT

646.612 TEMPORARY 4" YELLOW LINE, PAINT
 646.412 DURABLE 4" YELLOW LINE, THERMOPLASTIC OR
 646.413 DURABLE 4" YELLOW LINE, EPOXY PAINT OR
 646.414 DURABLE 4" YELLOW LINE, POLYUREA,
 172+50 TO 179+00 SOLID LT, DASHED RT
 179+00 TO 179+50 SOLID LT & RT
 179+50 TO 183+50 DASHED LT, SOLID RT

621.50 MANUFACTURED
 TERMINAL SECTION, FLARED
 173+27.5 TO 173+65 RT
 178+47 TO 178+84.5 LT
 621.80 REMOVAL AND DISPOSAL OF GUARDRAIL
 173+27.5 TO 173+65 RT
 178+47 TO 178+84.5 LT
 900.620 SPECIAL PROVISION
 (DELINEATOR WITH STEEL POST)
 173+65 RT
 178+47 LT



NOT TO SCALE

LEGEND

R	=	REMOVE EXISTING
S	=	SALVAGE
R&S	=	REMOVE AND SALVAGE
N	=	NEW
RET	=	RETAIN
B-B	=	BACK TO BACK
	=	EXISTING GUARDRAIL
	=	PROPOSED GUARDRAIL
YL	=	YELLOW LINE
WL	=	WHITE LINE
	=	DELINEATOR

ROADWAY LAYOUT 17

PROJECT NAME:	BLOOMFIELD-LEMINGTON
PROJECT NUMBER:	STP 2610(I)
FILE NAME:	/pave/06c052/pc052
PROJECT LEADER:	PTS
DESIGNED BY:	NLL
IPARM FILE NAME:	06C052_31
PLOT DATE:	19-JUN-2013 16:59
DRAWN BY:	SNG
CHECKED BY:	PTS
SHEET	31 OF 82