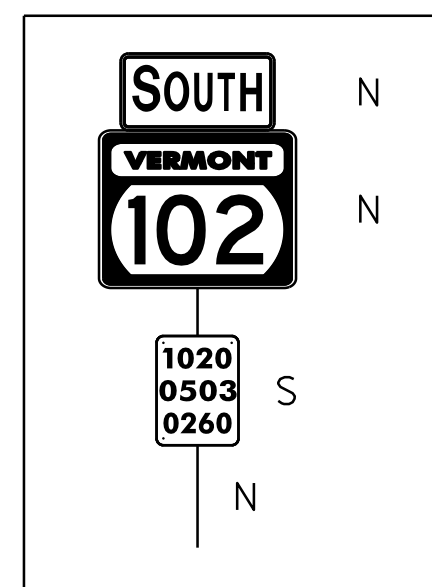


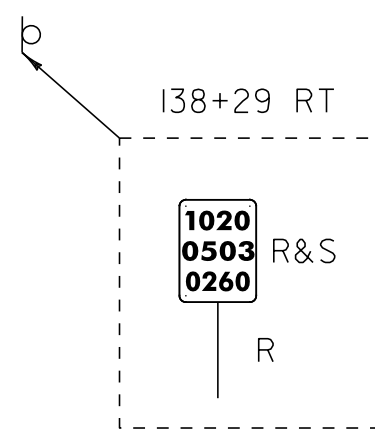
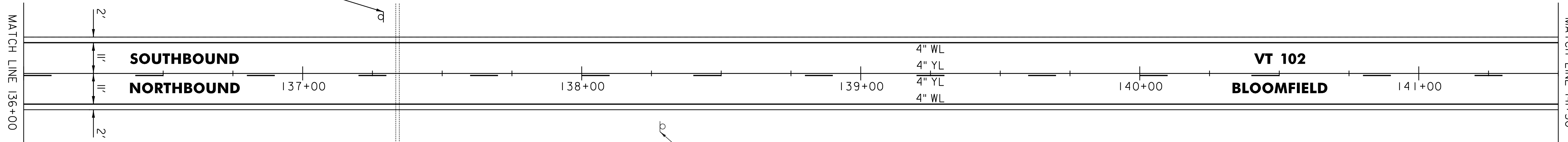
137+28 LT



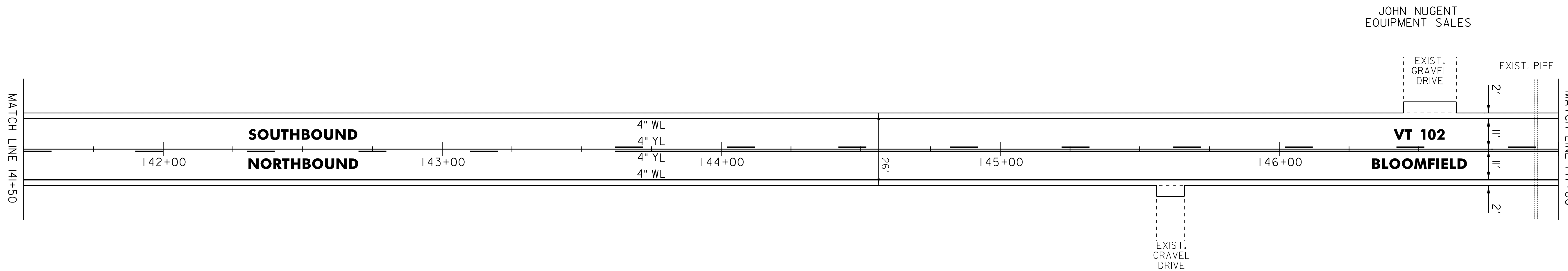
646.602 TEMPORARY 4" WHITE LINE, PAINT
 646.402 DURABLE 4" WHITE LINE, THERMOPLASTIC OR
 646.403 DURABLE 4" WHITE LINE, EPOXY PAINT OR
 646.404 DURABLE 4" WHITE LINE, POLYUREA.
 136+00 TO 147+00 SOLID LT & RT
 646.612 TEMPORARY 4" YELLOW LINE, PAINT
 646.412 DURABLE 4" YELLOW LINE, THERMOPLASTIC OR
 646.413 DURABLE 4" YELLOW LINE, EPOXY PAINT OR
 646.414 DURABLE 4" YELLOW LINE, POLYUREA.
 136+00 TO 143+62 DASHED CL
 143+62 TO 147+00 DASHED LT, SOLID RT

675.50 REMOVING SIGNS
AS SHOWN - 1

675.60 ERECTING SALVAGED SIGNS
AS SHOWN - 1



138+29 RT



JOHN NUGENT
EQUIPMENT SALES

LEGEND

- R = REMOVE EXISTING
- S = SALVAGE
- R&S = REMOVE AND SALVAGE
- N = NEW
- RET = RETAIN
- B-B = BACK TO BACK
- = EXISTING GUARDRAIL
- = PROPOSED GUARDRAIL
- YL = YELLOW LINE
- WL = WHITE LINE
- = DELINEATOR

ROADWAY LAYOUT 12

PROJECT NAME: BLOOMFIELD-LEMINGTON

PROJECT NUMBER: STP 2610(I)

FILE NAME: /pave/06c052/pc052

PLOT DATE: 19-JUN-2013 16:59

PROJECT LEADER: PTS

DRAWN BY: SNG

DESIGNED BY: NULL

CHECKED BY: PTS

IPARM FILE NAME: 06C052.26

SHEET 26 OF 82

NOT TO SCALE