

TEMPORARY 4in YELLOW LINE (PAINT)  
DURABLE 4in YELLOW LINE (THERMOPLASTIC)

STA 385+00 TO 413+07 SOLID LT&RT  
STA 395+37 DOUBLE SOLID LT  
(WITH CENTERLINE BREAKS FOR TOWN HIGHWAYS)

TEMPORARY 4in WHITE LINE (PAINT)  
DURABLE 4in WHITE LINE (THERMOPLASTIC)

STA 385+00 TO 413+07 SOLID LT&RT

TEMPORARY LETTER OR SYMBOL (PAINT)  
DURABLE LETTER OR SYMBOL (THERMOPLASTIC)

STA 395+37 LT "STOP"

TEMPORARY 24in STOP BAR (PAINT)  
DURABLE 24in STOP BAR (THERMOPLASTIC)

STA 395+37 LT HALL RD

REMOVING SIGNS  
4

389+42.5 LT  
BEGIN MTS, FLARED  
W/ NEW SBGR

STA 389+35 TO 389+72 LT

INSTALL MANUFACTURED  
TERMINAL SECTION, FLARED  
STA 390+35 TO 395+25 LT  
REMOVAL AND DISPOSAL  
OF GUARD RAIL

STA 389+35 TO 399+35 LT  
REMOVAL AND DISPOSAL  
OF GUIDE POSTS

STA 389+72 TO 395+25 LT

INSTALL STEEL BEAM  
GUARD RAIL, GALVANIZED  
w/8 FT POSTS

395+10 LT  
END SBGR  
W/ 2 ANCHORS

STA 395+25 LT  
RELOCATE MAILBOX  
MULTIPLE SUPPORT

SPEED  
LIMIT  
30

LEGAL LOAD  
LIMIT  
24,000  
POUNDS

STA 395+50 TO 399+12 LT  
REMOVAL AND DISPOSAL  
OF GUARD RAIL

STA 395+50 TO 395+75 LT

INSTALL STEEL BEAM  
GUARD RAIL, GALVANIZED

STA 395+75 TO 398+75 LT

INSTALL STEEL BEAM  
GUARD RAIL, GALVANIZED  
w/8 FT POSTS

STA 398+75 TO 399+12 LT

INSTALL MANUFACTURED  
TERMINAL SECTION, FLARED

395+28 LT  
BEGIN SBGR  
W/ 2 ANCHORS

399+07 LT  
END MTS, FLARED  
& NEW SBGR

399+77.5 RT  
END MTS, FLARED  
W/ NEW SBGR

STA 400+37 RT

INSTALL  
15"x40" CSP

STA 400+37 RT

INSTALL BURIED END  
TERMINAL w/ CULVERT,  
SEE DETAIL, SHEET 40.

STA 397+46 RT  
REMOVE D.I. AND 12" PIPE.  
PAYMENT WILL BE AS  
COMMON EXCAVATION.  
BACKFILL WITH SUBBASE OF  
CRUSHED GRAVEL, FINE  
GRADED AND PAVE TO  
FACE OF GUARD RAIL.

BRIDGE #5  
114" CGMPP  
STA 397+32= MM 7.53  
(NOT FIELD MEASURED)  
LEVEL & PAVE w/ 1/4"

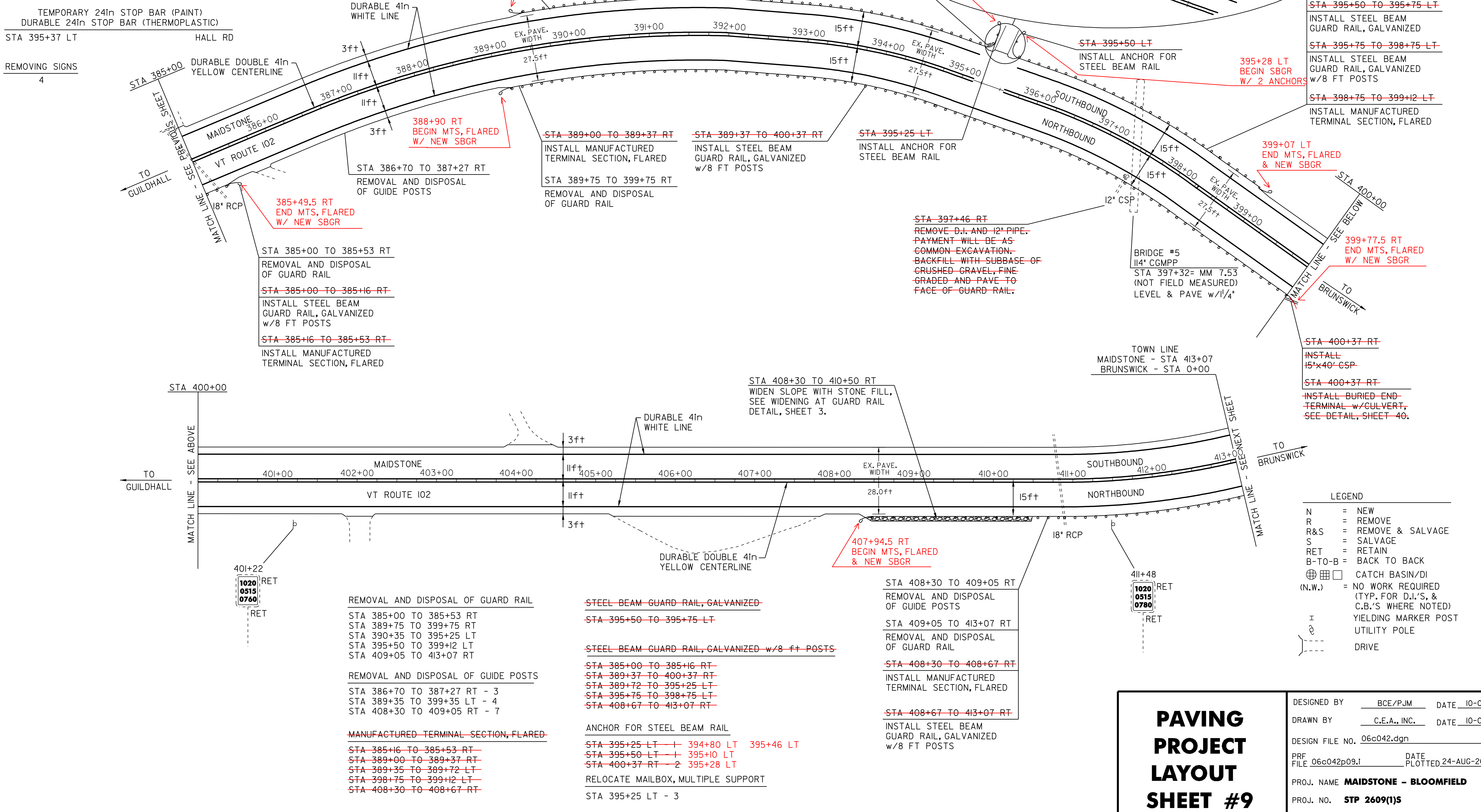
STA 408+30 TO 410+50 RT  
WIDEN SLOPE WITH STONE FILL,  
SEE WIDENING AT GUARD RAIL  
DETAIL, SHEET 3.

LEGEND

N	=	NEW
R	=	REMOVE
R&S	=	REMOVE & SALVAGE
S	=	SALVAGE
RET	=	RETAIN
B-TO-B	=	BACK TO BACK
⊕ ⊞ □	=	CATCH BASIN/DI
(N.W.)	=	NO WORK REQUIRED (TYP. FOR D.I.'S, & C.B.'S WHERE NOTED)
⊥	=	YIELDING MARKER POST
⊕	=	UTILITY POLE
⊔	=	DRIVE

## PAVING PROJECT LAYOUT SHEET #9

DESIGNED BY	BCE/PJM	DATE	10-06
DRAWN BY	C.E.A., INC.	DATE	10-06
DESIGN FILE NO.	06c042.dgn		
PRF FILE	06c042p09.i	DATE PLOTTED	24-AUG-2009
PROJ. NAME	MAIDSTONE - BLOOMFIELD		
PROJ. NO.	STP 2609(1)S		
SHEET	19	OF	40 SHEETS



REMOVAL AND DISPOSAL OF GUARD RAIL

STA 385+00 TO 385+53 RT  
STA 389+75 TO 399+75 RT  
STA 390+35 TO 395+25 LT  
STA 395+50 TO 399+12 LT  
STA 409+05 TO 413+07 RT

REMOVAL AND DISPOSAL OF GUIDE POSTS

STA 386+70 TO 387+27 RT - 3  
STA 389+35 TO 399+35 LT - 4  
STA 408+30 TO 409+05 RT - 7

MANUFACTURED TERMINAL SECTION, FLARED

STA 385+16 TO 385+53 RT  
STA 389+00 TO 389+37 RT  
STA 389+35 TO 389+72 LT  
STA 398+75 TO 399+12 LT  
STA 408+30 TO 408+67 RT

STEEL BEAM GUARD RAIL, GALVANIZED

STA 395+50 TO 395+75 LT

STEEL BEAM GUARD RAIL, GALVANIZED w/8 FT POSTS

STA 385+00 TO 385+16 RT  
STA 389+37 TO 400+37 RT  
STA 389+72 TO 395+25 LT  
STA 395+75 TO 398+75 LT  
STA 408+67 TO 413+07 RT

ANCHOR FOR STEEL BEAM RAIL

STA 395+25 LT - 1 394+80 LT 395+46 LT  
STA 395+50 LT - 1 395+10 LT  
STA 400+37 RT - 2 395+28 LT

RELOCATE MAILBOX, MULTIPLE SUPPORT

STA 395+25 LT - 3