

GPS CONTROL POINTS

HVCTRL #1

C95014
 NORTH = 730793.670
 EAST = 1471671.960
 ELEV. = 326.540

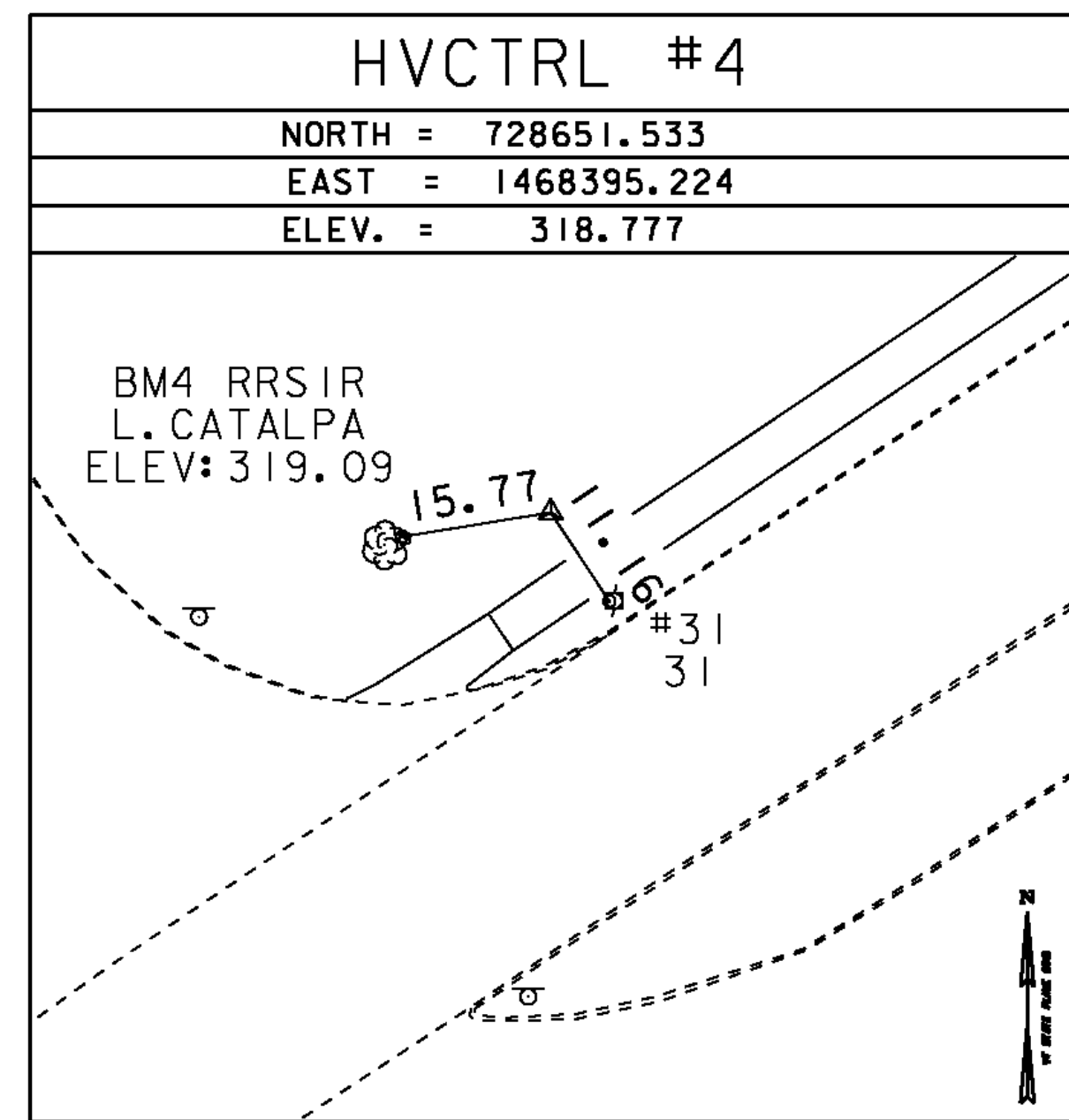
DESCRIBED BY VERMONT AGENCY OF TRANSPORTATION 1996 (CHR) GENERAL LOCATION, ESSEX, VT. TO REACH FROM THE 5 CORNERS INTERSECTION OF VT ROUTES 2A, 15, AND 117 IN ESSEX JUNCTION GO NORTHWEST ALONG VT ROUTE 15 FOR 1.6 MI (2.6 KM) TO THE INTERSECTION OF SUSIE WILSON ROAD RIGHT. CONTINUE STRAIGHT AHEAD AND GO WEST ALONG VT ROUTE 15 FOR 0.4 MI (0.6 KM) TO THE MARK ON THE RIGHT IN A GRASS STRIP BETWEEN THE ROAD AND A WOVEN WIRE FENCE. IT IS 1.6 MI (2.6 KM) EAST ALONG VT ROUTE 15 FROM THE I-89 BRIDGES OVER VT ROUTE 15 AT EXIT 15 IN WINOOSKI. THE MARK IS SET 10 CM BELOW GROUND SURFACE IN THE TOP OF A CAST ALUMINUM MONUMENT. IT IS 3.9 M (12.8 FT) NORTH OF THE NORTH CURB OF VT ROUTE 15, 22.2 M (72.8 FT) SOUTHEAST OF A 100 CM OAK, 17.4 M (57.1 FT) WEST OF A 40 CM PINE, 6.9 M (22.6 FT) SOUTH OF A FIBERGLASS WITNESS POST AGAINST THE WOVEN WIRE FENCE, AND 0.2 M (0.7 FT) SOUTH OF A LONE FIBERGLASS WITNESS POST.

HVCTRL #2

NOYES
 NORTH = 729317.840
 EAST = 1469377.460
 ELEV. = 318.030

DESCRIBED BY VERMONT AGENCY OF TRANSPORTATION 1977 1.7 MI ENE FROM WINOOSKI. TO REACH THE STATION FROM THE LINCOLN INN, GO WEST ALONG VT. ROUTE 15 APPROXIMATELY 2.6 MILES TO GATE NO. 1 ENTRANCE TO CAMP JOHNSON, ON THE NORTHWEST SIDE OF THE ROAD, 251.5 FEET NORTHEAST OF THE CENTERLINE OF THE ENTRANCE TO CAMP JOHNSON, 47.8 FEET WEST OF THE CENTER OF A MAN-HOLE COVER IN THE SIDEWALK, 18 FEET NORTHWEST OF A DRILLHOLE IN THE TOP OF THE CURB ABOVE THE WEST CORNER OF A DRAIN INLET (THIS BEING THE SECOND DRAIN INLET NORTHEAST ALONG VT. ROUTE 15 FROM THE ENTRANCE TO CAMP JOHNSON), 18.8 FEET SOUTHEAST OF THE RIGHT-OF-WAY FENCE, 8.5 FEET NORTHWEST OF THE NORTHWEST EDGE OF A BITUMINOUS SIDEWALK, 61.5 FEET SOUTHWEST OF AN 18-INCH ELM, 38.7 FEET NORTHEAST OF A 20-INCH ELM.
 STATION RECOVERY (1996) RECOVERY NOTE BY VERMONT AGENCY OF TRANSPORTATION (CHR) RECOVERED AS DESCRIBED. NOTE, ELM TREES AND DRILL HOLE IN CURB AT DI ARE GONE. TABLET HAS BEEN BEAT ON, HOWEVER INTEGRITY OF POSITION SHOULD STILL BE OK.

TRAVERSE TIES



* Main Traverse Complete 3/31/09 by L.Orvis P.C. & R.Bockus

NORTH =
EAST =
ELEV. =

NORTH =
EAST =
ELEV. =

NORTH =
EAST =
ELEV. =

NORTH =
EAST =
ELEV. =

ALIGNMENT TIES

NORTH =
EAST =
ELEV. =

NORTH =
EAST =
ELEV. =

NORTH =
EAST =
ELEV. =

NORTH =
EAST =
ELEV. =

NORTH =
EAST =
ELEV. =

DATUM	
VERTICAL	NAVD 88
HORIZONTAL	NAD 83(07)
ADJUSTMENT	Compass

PROJECT NAME:	COLCHESTER	PLOT DATE:	23-FEB-2012
PROJECT NUMBER:	TCSP TCSE (9)	DRAWN BY:	R. BULLOCK
FILE NAME:	t06b242frm.dgn	DESIGNED BY:	D. LYMAN
PROJECT LEADER:	J. SCHULTZ	CHECKED BY:	P. HODGE
TIE SHEET		SHEET	9 OF 22