

TEMPORARY 4" WHITE LINE, PAINT
 DURABLE 4" WHITE LINE, THERMOPLASTIC
 228+00 TO 238+00 SOLID LT & RT

TEMPORARY 4" YELLOW LINE, PAINT
 DURABLE 4" YELLOW LINE, THERMOPLASTIC
 228+00 TO 238+00 SOLID LT & RT

REMOVAL AND DISPOSAL OF GUARDRAIL
 228+00.0 TO 238+00.0 RT
 234+53.0 TO 238+00.0 LT

STEEL BEAM GUARDRAIL, GALVANIZED
 228+31.5 TO 238+00.0 RT
 236+79.0 TO 238+00.0 LT

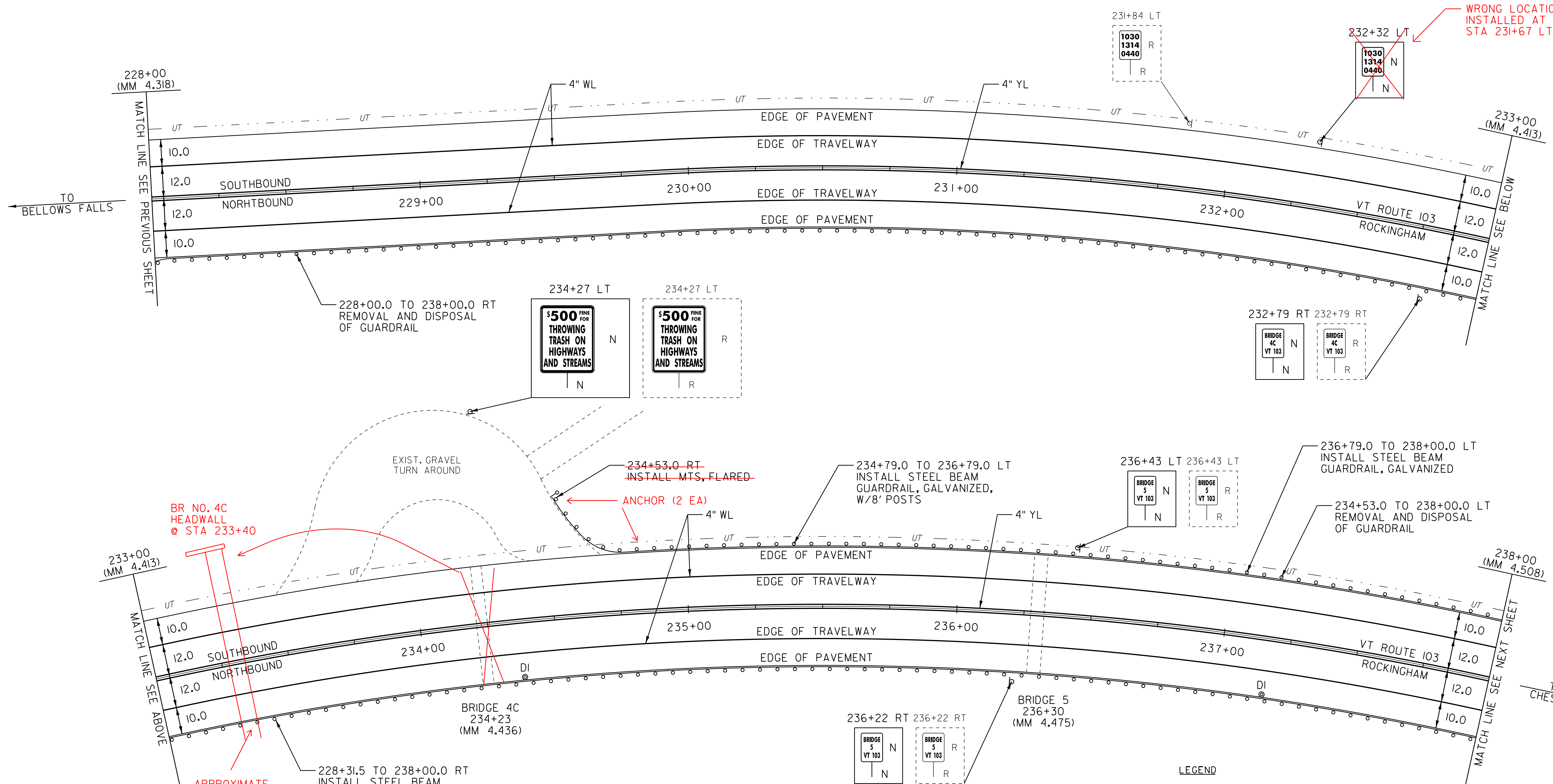
REHAB. DROP INLETS, CATCH BASINS,
 OR MANHOLES, CLASS I, CLASS II OR CLASS III
 234+32 RT (DI)
 237+17 RT (DI)

BITUMINOUS CONCRETE
 CURB, TYPE A
 229+10 TO 238+00 RT

REMOVING SIGNS
 AS SHOWN - 5

STEEL BEAM GUARDRAIL, GALVANIZED W/8' POSTS
 234+79.0 TO 236+79.0 LT

MANUFACTURED TERMINAL SECTION, FLARED
 DELINEATOR WITH STEEL POST
 234+53.0 LT



BR NO. 4C
 HEADWALL
 @ STA 233+40

APPROXIMATE
 LOCATION

WRONG LOCATION
 INSTALLED AT
 STA 231+67 LT

LEGEND

R	=	REMOVE EXISTING
S	=	SALVAGE
R&S	=	REMOVE AND SALVAGE
N	=	NEW
RET	=	RETAIN
B-B	=	BACK TO BACK
---	=	EXISTING GUARDRAIL
o-o	=	PROPOSED GUARDRAIL
YL	=	YELLOW LINE
WL	=	WHITE LINE
?	=	TYPE I DELINEATOR, WHITE

NOT TO SCALE

PAVING LAYOUT 26

PROJECT NAME: ROCKINGHAM-CHESTER	
PROJECT NUMBER: NH 2628(I)	
FILE NAME: 06B224	PLOT DATE: 31-AUG-2012 14:02
PROJECT LEADER: PTS	DRAWN BY: MRS
DESIGNED BY: NULL	CHECKED BY: PTS
IPARM FILE NAME: pb224la26.i	SHEET 40 OF 82