

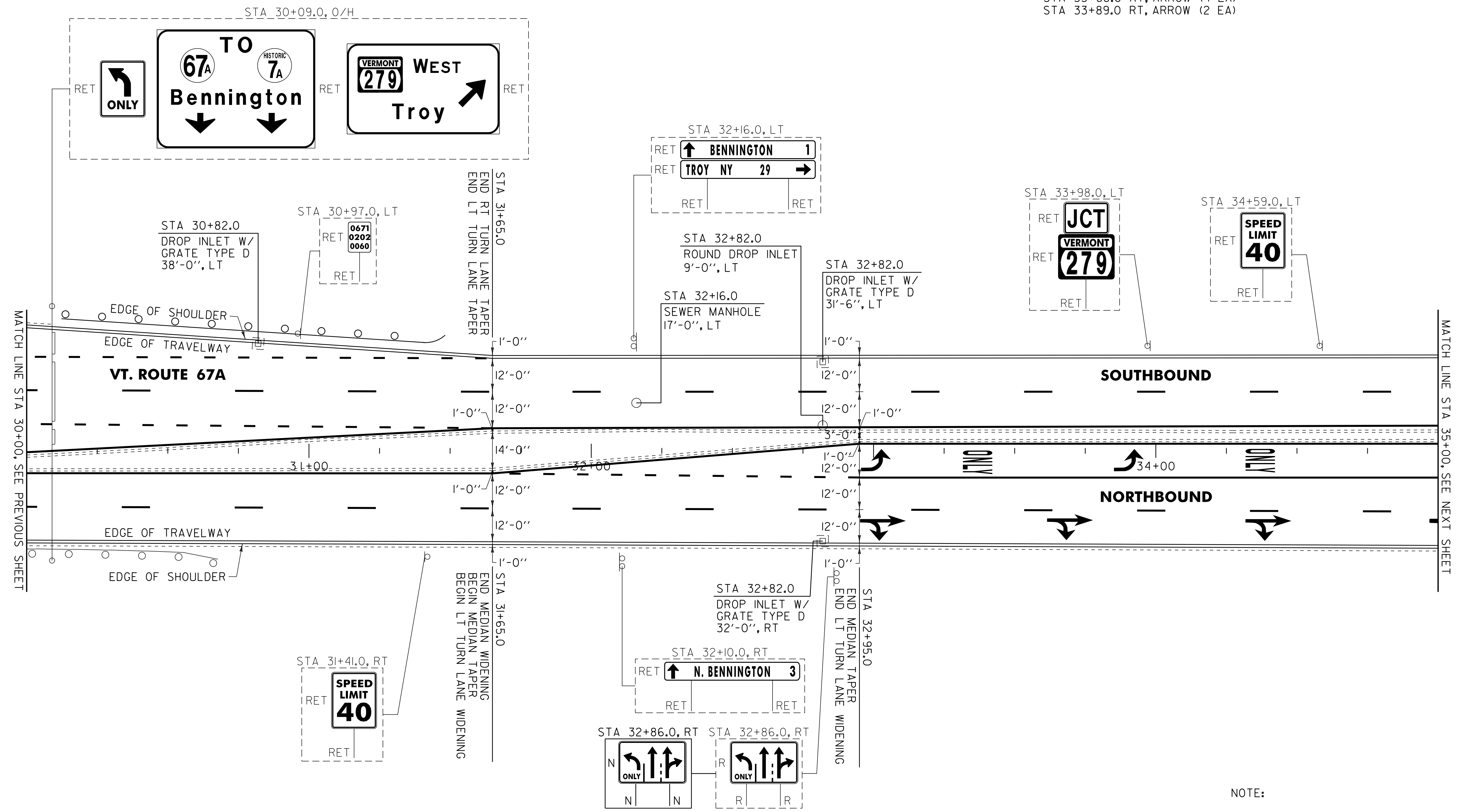
646.402 DURABLE 4 INCH WHITE LINE, THERMOPLASTIC
 (ALL LINES WILL INCLUDE EDGE LINE BREAKS AND RADIUS FOR TOWN HIGHWAYS)
 VT. ROUTE 67A:
 STA 30+00.00 - STA 35+00.00 EDGE LINE LT/RT
 STA 30+00.00 - STA 31+65.00 DOTTED LANE LINE LT
 STA 30+00.00 - STA 31+65.00 DOTTED LANE LINE RT
 STA 30+00.00 - STA 35+00.00 DASHED LANE LINE LT
 STA 30+00.00 - STA 35+00.00 DASHED LANE LINE RT
 STA 31+65.00 - STA 32+95.00 DOTTED LANE LINE RT
 STA 32+95.00 - STA 35+00.00 SOLID LANE LINE RT

646.602 TEMPORARY 4 INCH WHITE LINE, PAINT
 (ALL LINES WILL INCLUDE EDGE LINE BREAKS AND RADIUS FOR TOWN HIGHWAYS)
 VT. ROUTE 67A:
 STA 30+00.00 - STA 35+00.00 EDGE LINE LT/RT
 STA 30+00.00 - STA 31+65.00 DOTTED LANE LINE LT
 STA 30+00.00 - STA 31+65.00 DOTTED LANE LINE RT
 STA 30+00.00 - STA 35+00.00 DASHED LANE LINE LT
 STA 30+00.00 - STA 35+00.00 DASHED LANE LINE RT
 STA 31+65.00 - STA 32+95.00 DOTTED LANE LINE RT
 STA 32+95.00 - STA 35+00.00 SOLID LANE LINE RT

646.412 DURABLE 4 INCH YELLOW LINE, THERMOPLASTIC
 (ALL LINES WILL INCLUDE C/L BREAKS FOR TOWN HIGHWAYS) S=SOLID, D=DASHED
 VT. ROUTE 67A:
 STA 30+00.00 - STA 35+00.00 MEDIAN EDGE LINE LT/RT
 646.612 TEMPORARY 4 INCH YELLOW LINE, PAINT
 (ALL LINES WILL INCLUDE C/L BREAKS FOR TOWN HIGHWAYS) S=SOLID, D=DASHED
 VT. ROUTE 67A:
 STA 30+00.00 - STA 35+00.00 MEDIAN EDGE LINE LT/RT

646.492 DURABLE LETTER OR SYMBOL, THERMOPLASTIC
 VT. ROUTE 67A:
 STA 32+99.0 RT, ARROW (1EA)
 STA 33+01.5 RT, ARROW (2 EA)
 STA 33+42.0 RT, "O,N,L,Y" (4 EA)
 STA 33+68.0 RT, ARROW (2 EA)
 STA 33+89.0 RT, ARROW (1EA)
 STA 34+37.0 RT, "O,N,L,Y" (4 EA)
 STA 34+37.0 RT, ARROW (2 EA)
 646.692 TEMPORARY LETTER OR SYMBOL, TPAINT
 VT. ROUTE 67A:
 STA 32+99.0 RT, ARROW (2 EA)
 STA 33+68.0 RT, ARROW (4 EA)
 STA 33+89.0 RT, ARROW (2 EA)

675.50 REMOVING SIGNS AS SHOWN - 1



NOTE:
 I. THE CONTRACTOR SHALL REHAB. THE EXISTING DROP INLETS, CATCH BASINS OR MANHOLES TO A DEPTH AS DIRECTED BY THE RESIDENT ENGINEER. ALL REHAB. WORK WILL BE PAID FOR UNDER THE APPLICABLE REHAB. ITEM AS DIRECTED BY THE RESIDENT ENGINEER. ALL EXISTING UTILITIES MARKED "TO REMAIN" SHALL NOT BE ALTERED OR REHABILITATED UNLESS DIRECTED OTHERWISE BY THE RESIDENT ENGINEER.

604.412, 604.415, 604.418 REHAB. DROP INLETS, CATCH BASINS, OR MANHOLES CLASS I, II, OR III (SEE NOTE I)
 VT. ROUTE 67A:
 STA 30+82.0 LT
~~STA 32+82.0 LT ROUND DI, NO WORK~~
 STA 32+82.0 LT
 STA 32+82.0 RT

621.20 STEEL BEAM GUARDRAIL, GALVANIZED
 VT. ROUTE 67A:
 STA 30+00.0 - STA ~~30+76.5 RT (-78.5 LF)~~ 30+79 RT
 STA 30+00.0 - STA ~~31+51.0 LT (-153.0 LF)~~ 31+75 LT

621.80 REMOVAL AND DISPOSAL OF GUARDRAIL
 VT. ROUTE 67A:
 STA 30+00.0 - STA ~~30+72.0 RT (-372.0 LF)~~ 30+79 RT
 STA 30+00.0 - STA ~~31+51.0 LT (-151.0 LF)~~ 31+75 LT

SIGN LEGEND
 R = REMOVE
 S = SALVAGE
 N = NEW
 RET = RETAIN
 B-B = BACK TO BACK
 EXISTING = - - - - -
 NEW = _____

604.42 CHANGING ELEVATION OF SEWER MANHOLES
 VT. ROUTE 67A:
~~STA 32+16.0 LT~~ * SEE NOTE, SHEET 19

621.60 ANCHOR FOR STEEL BEAM RAIL
 VT. ROUTE 67A:
 STA 30+70.0 RT
 STA ~~31+44.5 LT~~ 31+65 LT

646.81 PAINTED CURB
 VT. ROUTE 67A:
 STA 31+35.0 - STA 31+95.0 LT/RT (120.0 LF)
 STA 32+65.0 - STA 35+00.0 LT (470.0 LF)

NOT TO SCALE

PROJECT LAYOUT SHEET #7	PROJECT NAME: BENNINGTON	PLOT DATE: 07-MAY-2012 14:2
	PROJECT NUMBER: STP 2626(1)	DRAWN BY: C.A.K.
	FILE NAME: p06b220.dgn	CHECKED BY: D.E.G.
	PROJECT LEADER: D.E.G.	SHEET 25 OF 69