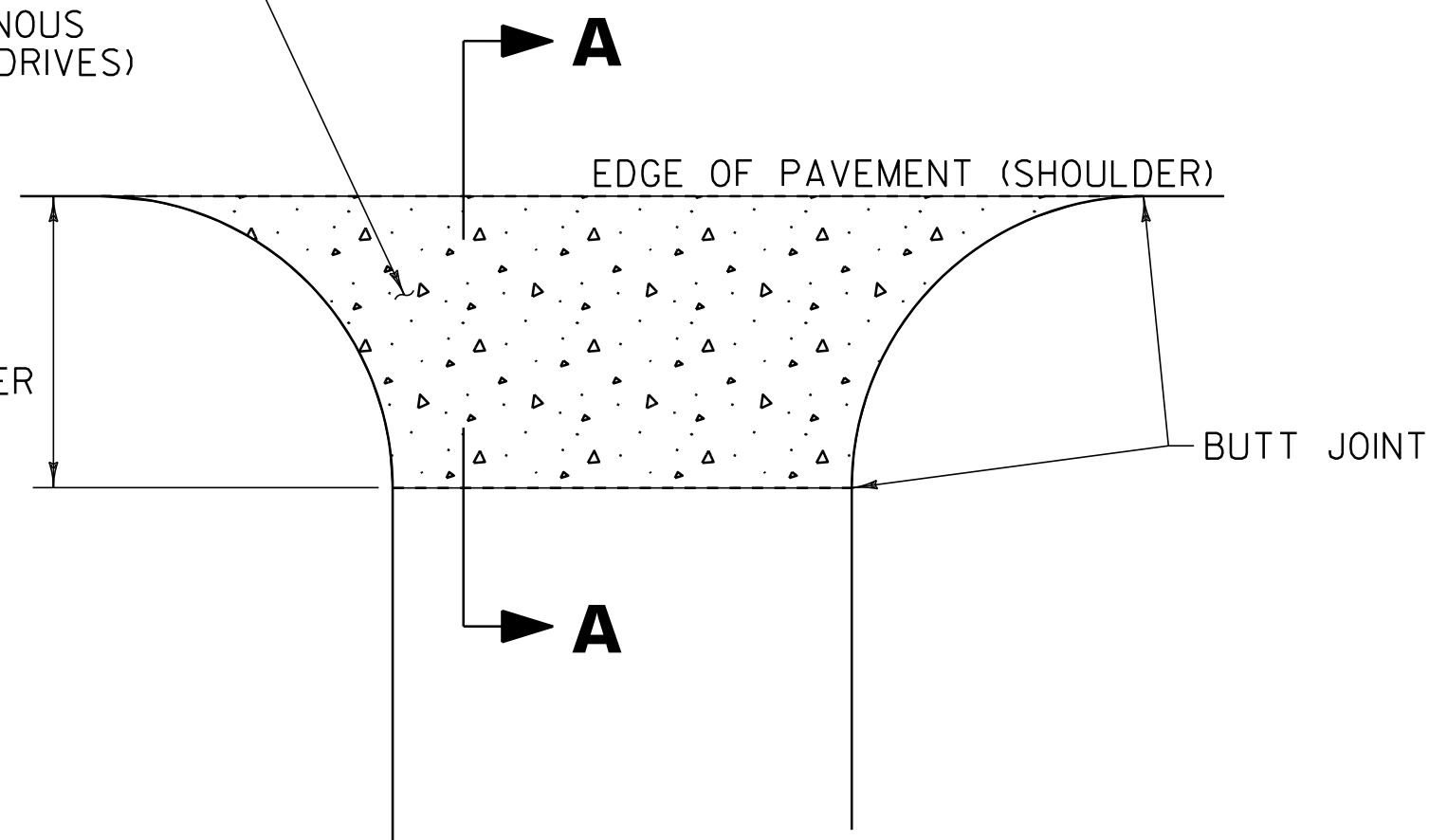
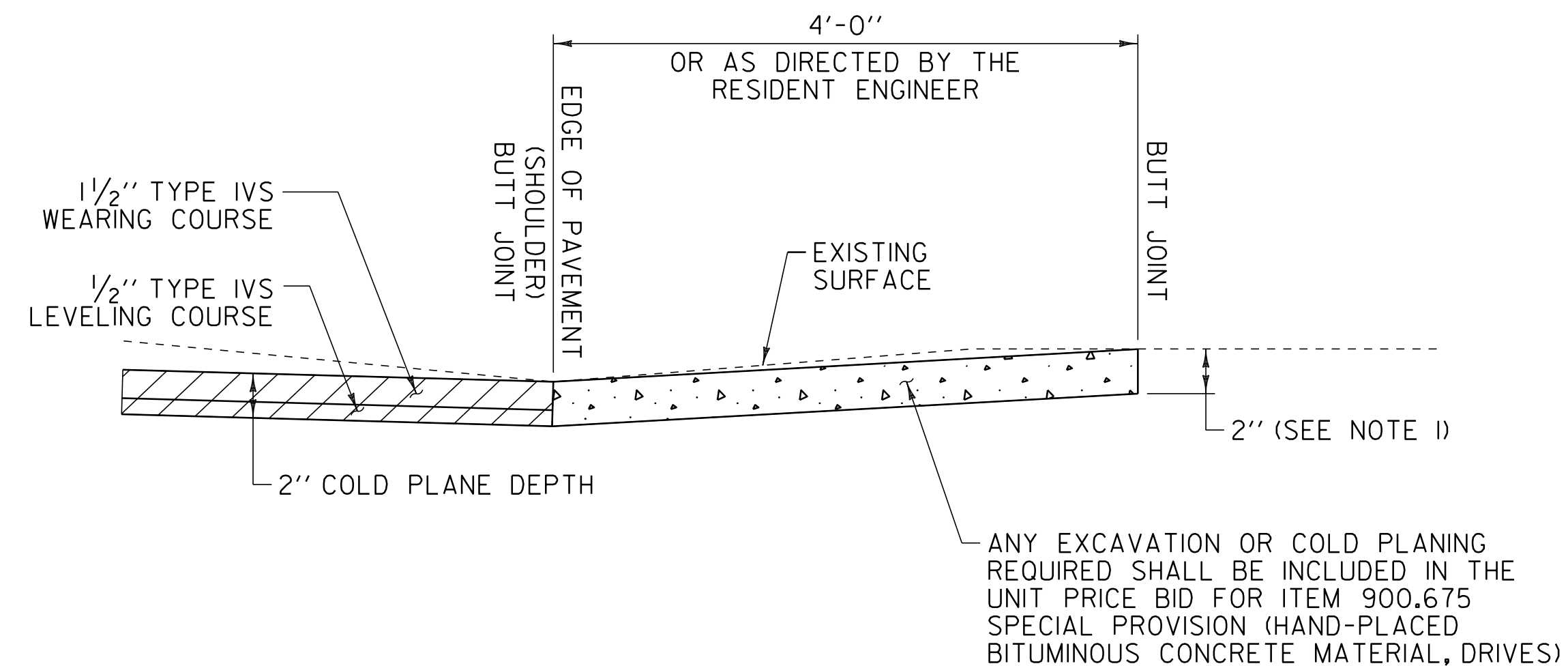


ITEM 900.675 SPECIAL PROVISION
(HAND-PLACED BITUMINOUS
CONCRETE MATERIAL, DRIVES)

4'-0"
OR AS DIRECTED BY
THE RESIDENT ENGINEER



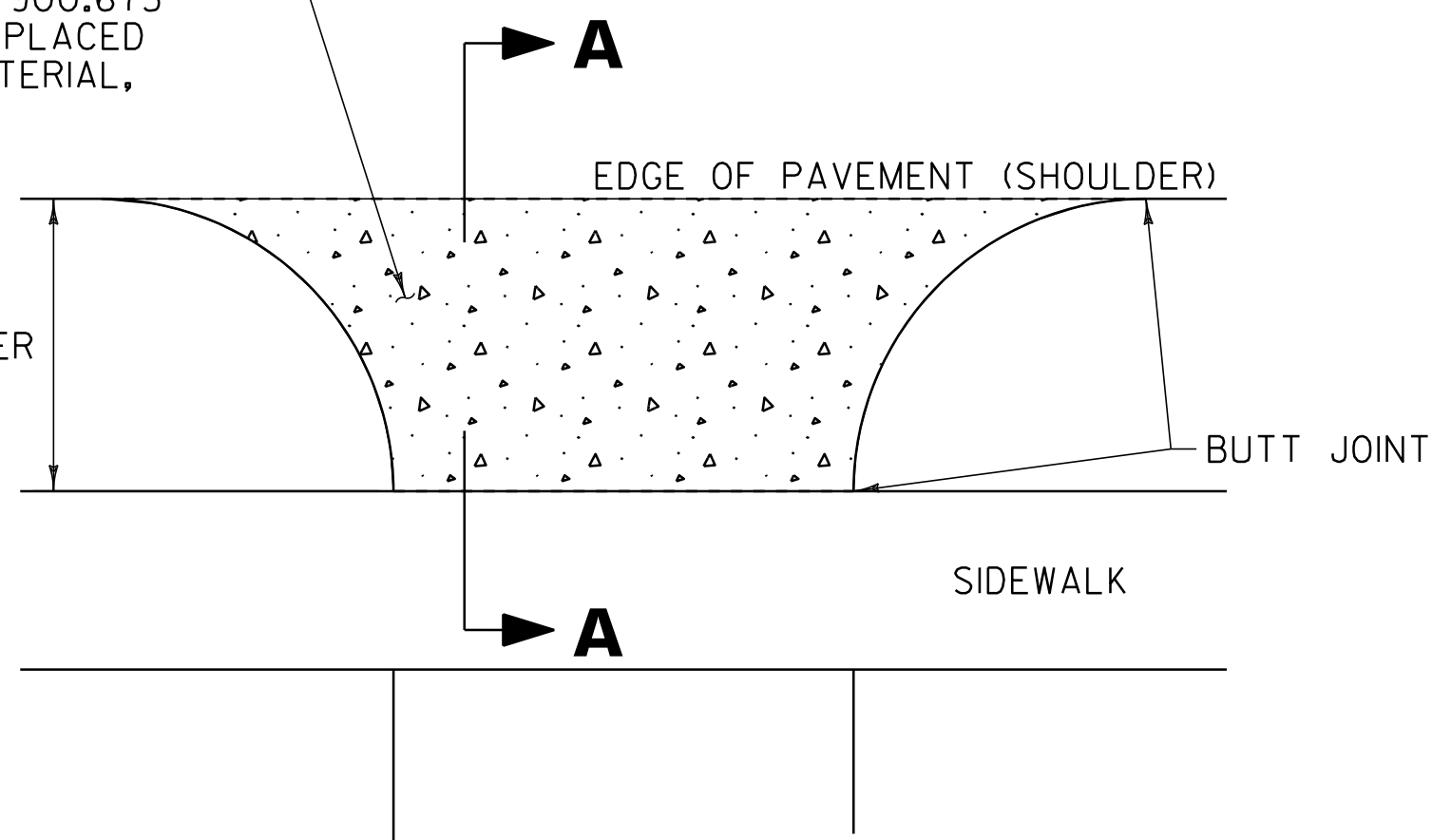
PLAN
DRIVEWAY IN
COLD PLANE AREAS



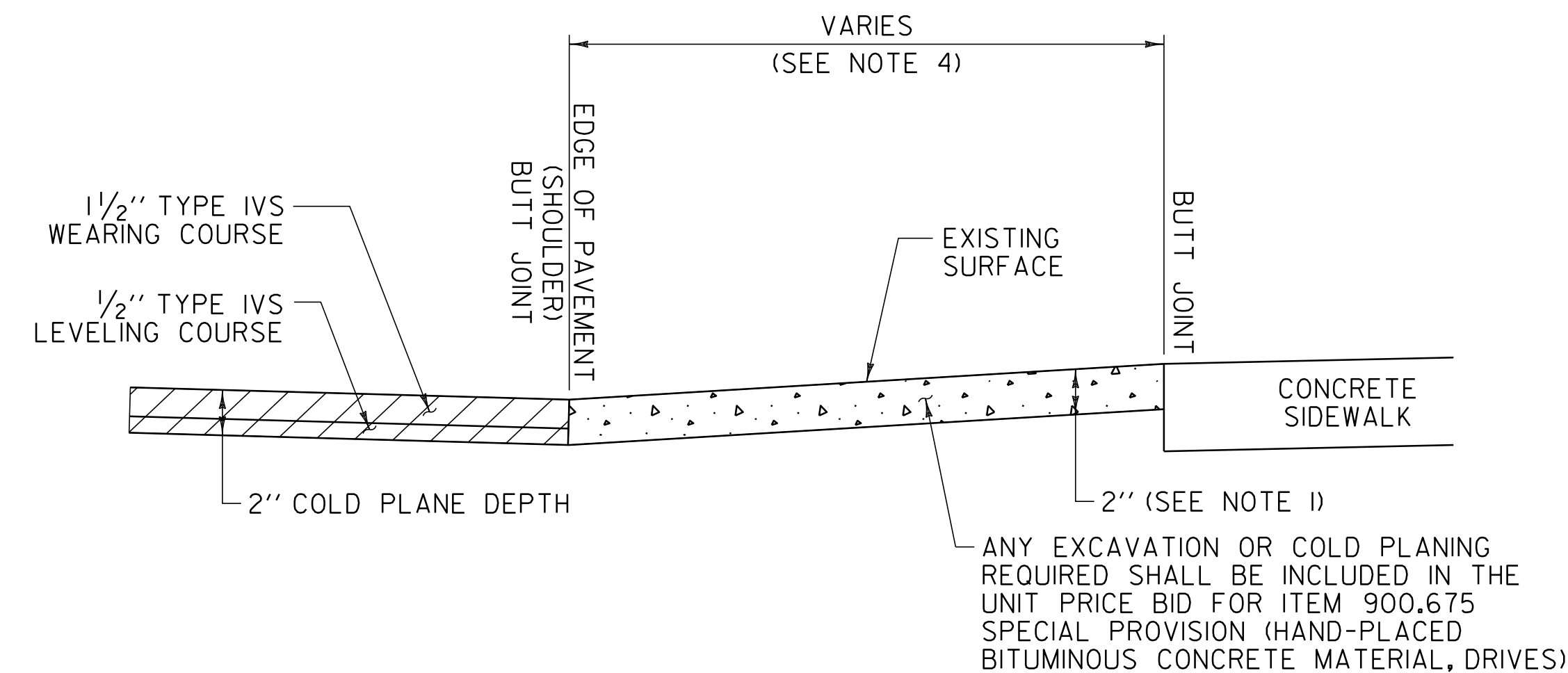
SECTION A-A
DRIVEWAYS IN
COLD PLANE AREAS

ANY EXCAVATION OR COLD PLANING
REQUIRED SHALL BE INCLUDED IN THE
UNIT PRICE BID FOR ITEM 900.675
SPECIAL PROVISION (HAND-PLACED
BITUMINOUS CONCRETE MATERIAL,
DRIVES)

AS DIRECTED BY
THE RESIDENT ENGINEER
(SEE NOTE 4)



PLAN
DRIVEWAY WITH SIDEWALK
IN COLD PLANE AREAS

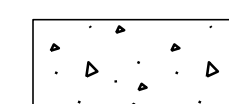


SECTION A-A
DRIVEWAYS IN COLD PLANE
AREAS WITH SIDEWALK

NOTES:

1. PAVING LIFT NOT TO EXCEED 2".
2. THE COST OF PLACING SUBBASE MATERIAL, CLEANING EXISTING PAVED SURFACES, INCLUDING POWER EQUIPMENT, AND FOR FILLING JOINTS, CRACKS AND HOLES WILL BE INCLUDED IN THE UNIT PRICE BID FOR ITEM 900.675 SPECIAL PROVISION (HAND-PLACED BITUMINOUS CONCRETE MATERIAL, DRIVES).
3. EXCAVATION OR COLD PLANING NEEDED TO ACHIEVE PROPER DRIVE SLOPES WILL BE INCLUDED IN THE UNIT PRICE BID FOR ITEM 900.675 SPECIAL PROVISION (HAND-PLACED BITUMINOUS CONCRETE MATERIAL, DRIVES).
4. THE CONTRACTOR SHALL PAVE TO THE EXISTING CONCRETE SIDEWALK AS DIRECTED BY THE RESIDENT ENGINEER.

LEGEND



ITEM 900.675 SPECIAL PROVISION
(HAND-PLACED BITUMINOUS
CONCRETE MATERIAL, DRIVES)

NOT TO SCALE

**COMPOSITE
DRIVEWAY
HANDWORK
DETAILS
SHEET**

PROJECT NAME: BENNINGTON & BENNINGTON (NORTH BENNINGTON) CLASS 1	
PROJECT NUMBER: STP 2626(I) & STP 2622(I)	
FILE NAME: p06b220.dgn	PLOT DATE: 07-MAY-2012 14:2
PROJECT LEADER: D.E.G.	DRAWN BY: C.A.K.
DESIGNED BY: M.J.L.	CHECKED BY: D.E.G.
DWG. NO. p06b220cdhd.i	SHEET 6 OF 69