

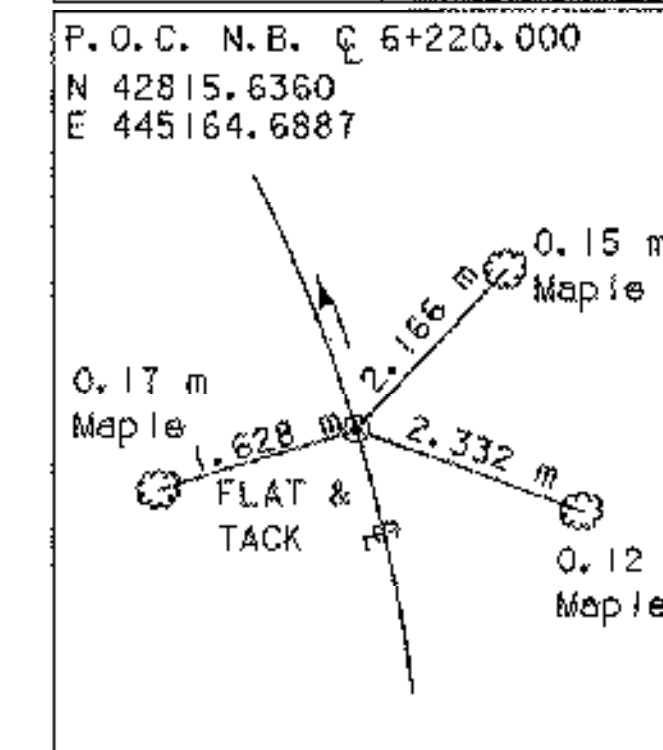
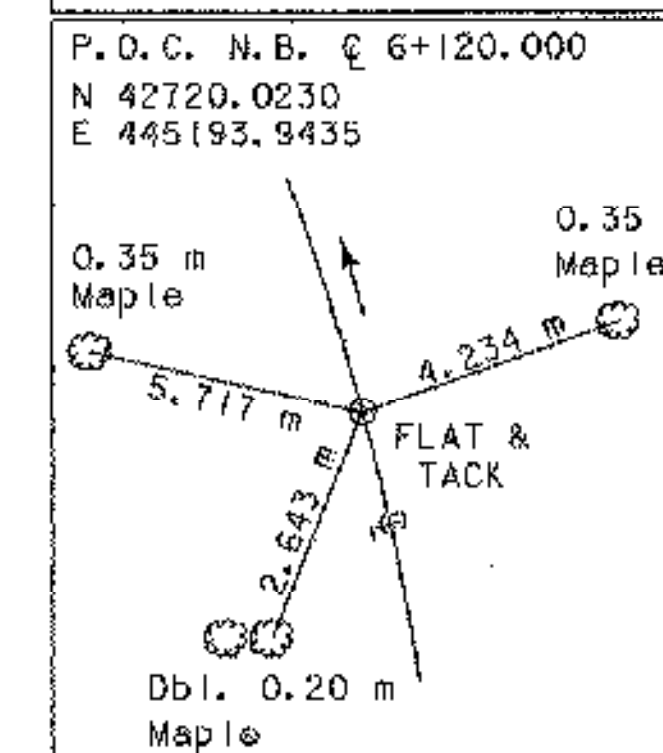
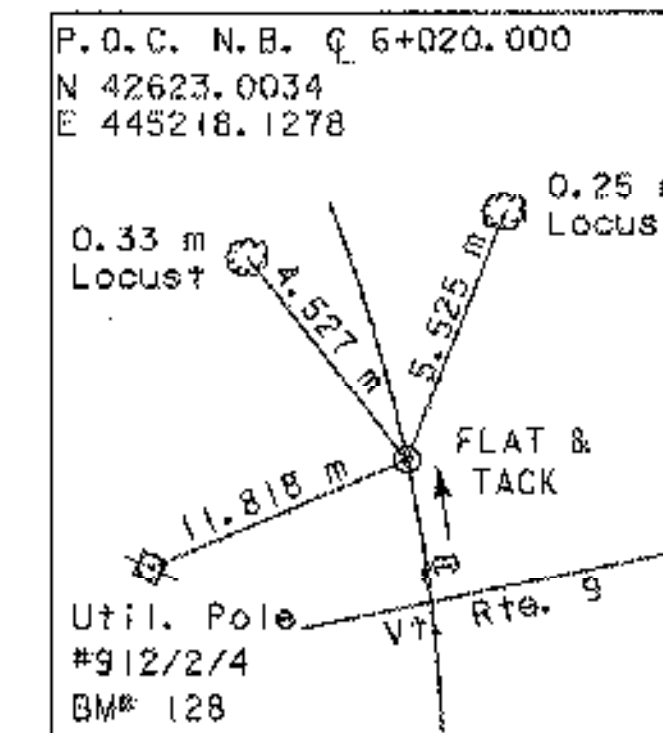
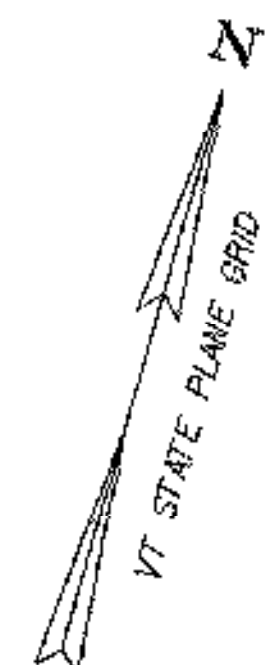
MATCH LINE
STA. NB 6+140,
SEE SHEET P-02

PROJECT DEMARCATION FENCE
STA. NB 6+016.3, 7.0m RT. - STA. NB 6+140.0, 3.3m RT.
STA. NB 6+016.3, 18.9m RT. - STA. NB 6+140.0, 15.3m RT.

B-110 (OW)
CHAIN-LINK FENCE, 1.8m
STA. NB 6+026.379, 8.8m RT. - STA. NB 6+028.630, 6.2m RT.
STA. NB 6+026.782, 16.0m RT. - STA. NB 6+029.290, 18.2m RT.

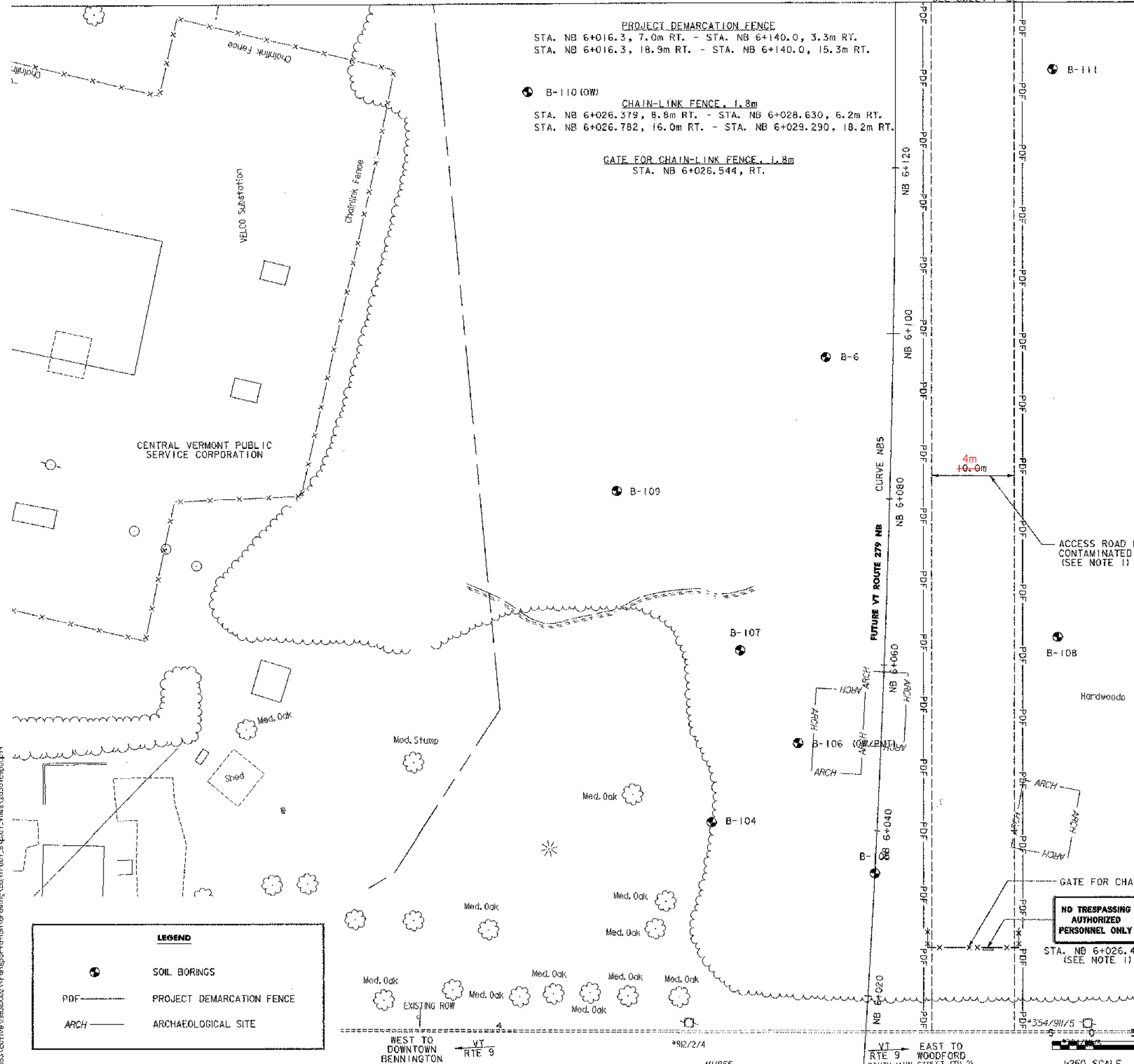
GATE FOR CHAIN-LINK FENCE, 1.8m
STA. NB 6+026.544, RT.

CURVE NBS	
Δ	= 55°24'30.7" LT.
R	= 1900.000m
T	= 997.703m
L	= 1837.417m
E	= 246.022m
BANK	= 0.032
PI STA.	NB5+733.330
N	= 42266.8841
E	= 445508.4114
PCC STA.	NB4+735.627
N	= 41372.0092
E	= 445067.2651
PT STA.	NB6+573.044
N	= 43138.0842
E	= 445022.1796



STATE OF VERMONT

- NOTES:
- ONCE THIS CONTRACT IS COMPLETE, THE ACCESS ROAD IS TO REMAIN IN PLACE FOR THE CONSTRUCTION OF FUTURE VT ROUTE 279 AND THE BRIDGE OVER THE ROARING BRANCH RIVER AS PART OF PROJECT NO. AC NH 019-1(S1). SIGN SHALL BE PERMANENTLY INSTALLED ON THE GATE AS SHOWN TO THE SATISFACTION OF THE ENGINEER. COST OF INSTALLING SIGN AND ANY NECESSARY MOUNTING HARDWARE TO BE INCIDENTAL TO ITEM 675.20 -TRAFFIC SIGNS, TYPE A.
 - CONTRACTOR SHALL ENSURE THAT ROUTE 9 PAVEMENT AND DRAINAGE IS NOT IMPACTED BY CONSTRUCTION OF THIS PROJECT. REPAIRS TO ROUTE 9 SHALL BE INCIDENTAL TO OTHER ITEMS OF WORK AND COMPLETED AS DIRECTED BY THE ENGINEER.



LEGEND

	SOIL BORINGS
	PROJECT DEMARCATION FENCE
	ARCHAEOLOGICAL SITE

VERMONT AGENCY OF TRANSPORTATION



PROJECT NAME: BENNINGTON
PROJECT NUMBER: NH 019-1(K55)
FILE NAME: ...plot_files\zd307c5p0lptf PLOT DATE: 3/28/2008
DESIGN SUPERVISOR: GREG EDWARDS DRAWN BY: STANTEC
DESIGNED BY: MARC FOISY CHECKED BY: GARY SANTY
GENERAL PLAN /FINAL STABILIZATION PLAN P-01SHEET 10 OF 19

V:\NBS3\active\NBS30002\transportation\drawing\contract\plot_files\zd307c5p0lptf