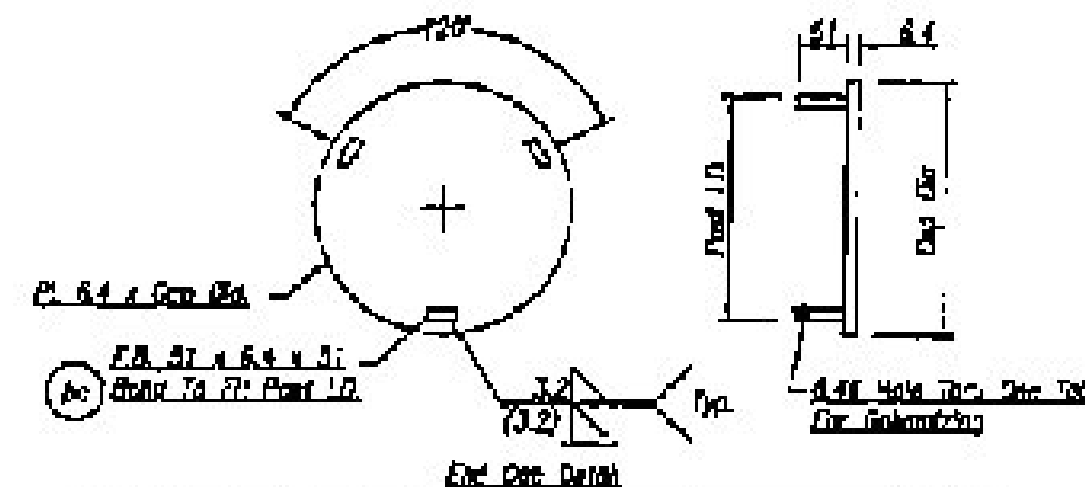
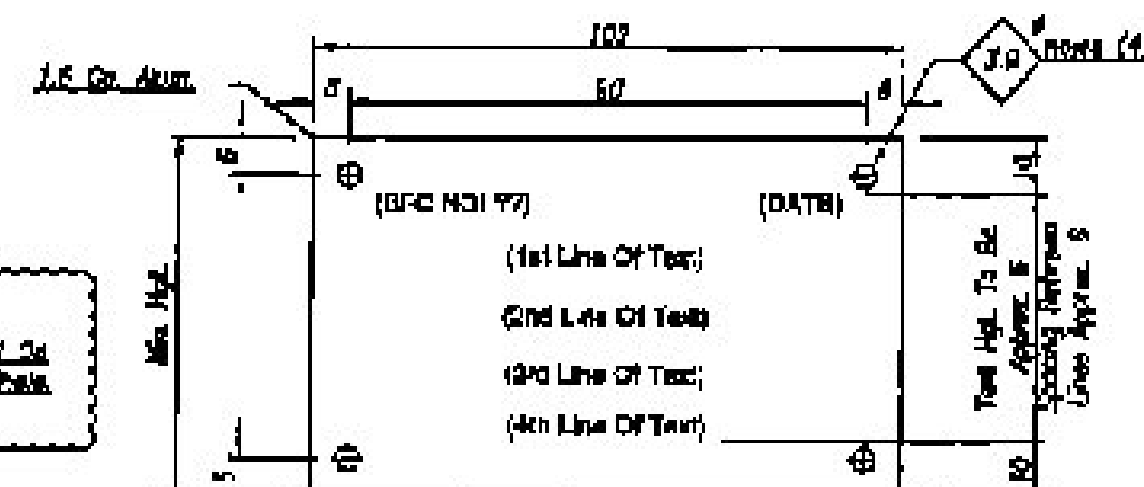


View D-D

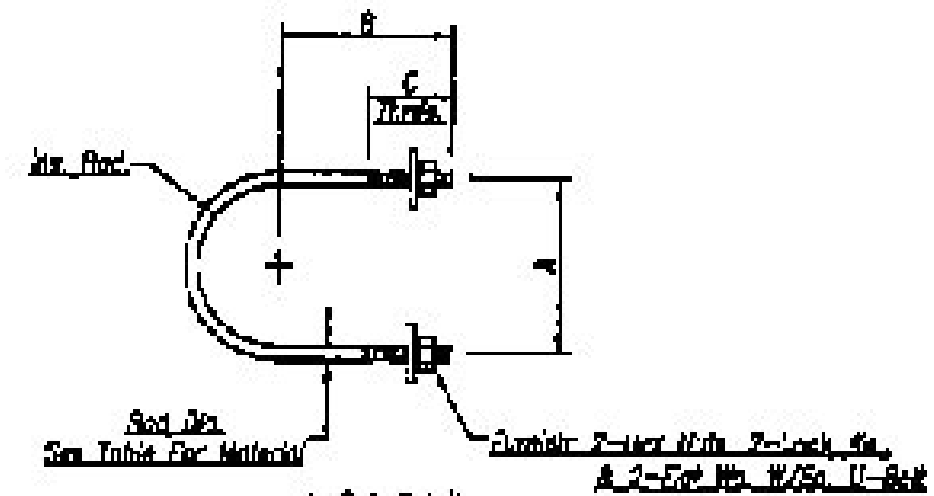
Qty	Mat	Length	A	B	C	D
3	512	5.183M	1.801M	2.061M	3.121M	3.281M
3	513	4.258M	1.844M	1.904M	2.854M	2.824M



Qty	Mat	Dep. Dk. (Post O.D.)	Post L.D.	STRENGTH
4	222	273	284	87.7 @ 8.7



Qty	Height	SFD No.	Date	1st Line Of Test	2nd Line Of Test	3rd Line Of Test	4th Line Of Test
1	7'	V-11862	▲	E13 = 273 O.D. x 5.2 W. x 15.82M	E14 = 273 O.D. x 6.3 W. x 10.382M	Spout = 141 O.D. x 3.6 W. x 28.716M	#1 Pipe 48 KSI Min. Yield Strength



Qty	Mat	Rod Dia	A	B	C	Rod Length	W/4s	W/4s	Connection
24	U7	79.7	166	130	64	326	73	73	1/4" C.D. Chord To Endwires
24	U8	72.7	160	110	51	472	73	73	Sign Support to 141 O.D. Chord

Qty	Mat	Description	Length	Remarks
4	222	W/50 x 1400 (5)	See Table	
4	222	P. 6.4 x 6.4 x 1.1		
12	222	P. 6.4 x 6.4 x 1.1		
12	222	284 x 18 O.D. Round Head Bolt Series		
24	U8	141 O.D. Chord 1/2" - 141 W/4s, 2 - 141 W/4s @ 2 - Lock Washers		
12	U7	18.1M Chord 1/2" - 18.1 W/4s, 2 - 18.1 W/4s @ 2 - Lock Washers		
1		2' Sign (Purchased Part)		
4		3.5' Sign (Purchased Part)		



Notes:
 Refer To Schedule A1, Details And Edges Of Steel Plates, Screens, Etc. Shall Be Given To A 1/8" Radius.
 All Dimensions are in Millimeters Unless Otherwise Noted.
 MATERIAL SPECIFICATIONS:
 Steel: Steel Sections To A 578, A572, Gr. 50
 Concrete: All Steel Reinforcement For A 578, A572
 W/4s: To Be A 578, Gr. 50
 W/4s: To Be A 578, Gr. 50
 Bolts: To Be A 578, Gr. 50
 Washers: To Be A 578, Gr. 50

Qty	Mat	Part No.	Part No.	Part No.	Part No.

Brookfield Fabricating Corp
 P.O. Box 400 - Brookfield, Vermont 05602-0400
 (802) 888-2214
 FAX: (802) 888-2214
 147 Main Street
 Brookfield, Vermont
 Fabrication Details Of Sign Supports, Rod Ends & Misc. Hardware
 Sheet No. 5 of 5
 Project No: 12-10-10
 Drawn By: J. M.
 Checked By: J. M.
 Date: 12-10-10

RECEIVED

FEB 7 2012

G.P.I.