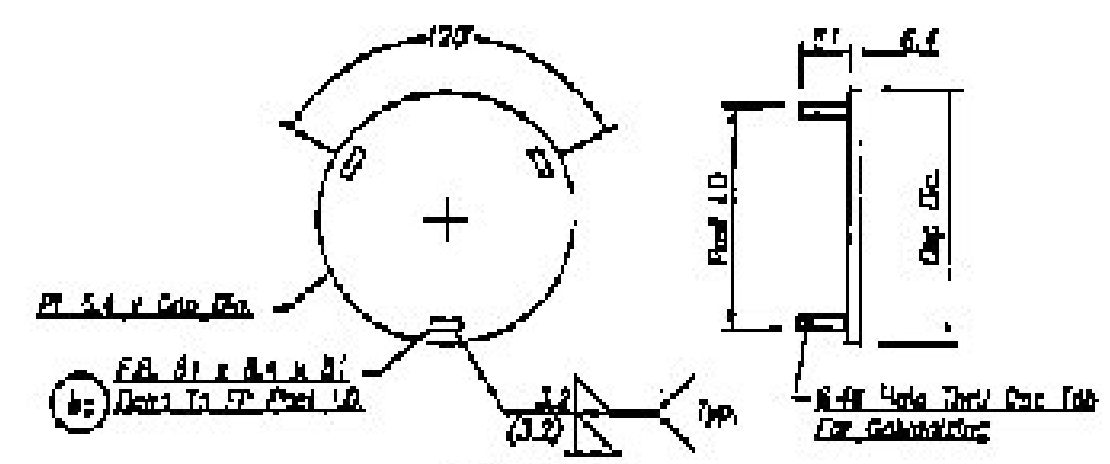


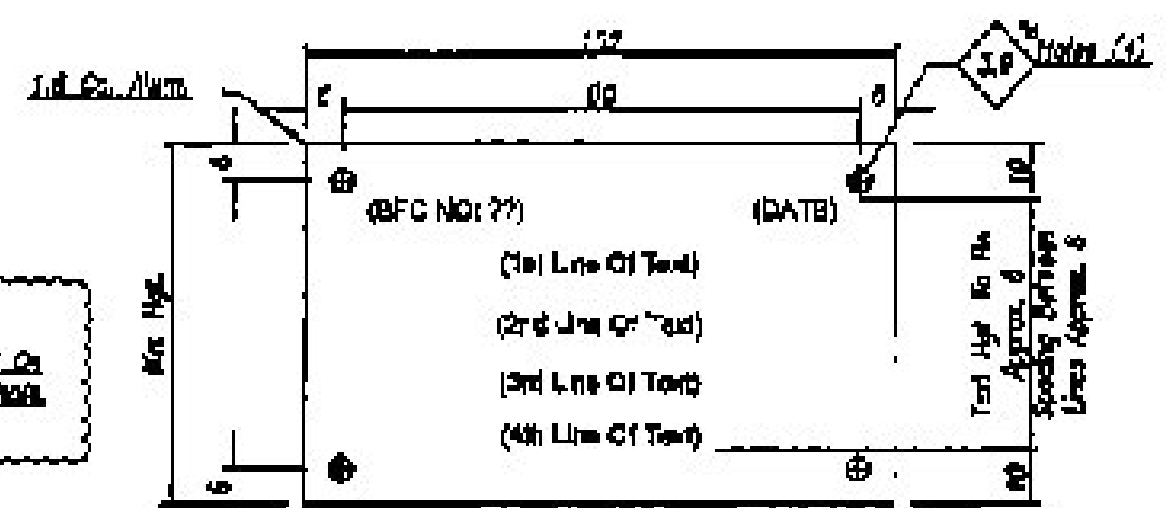
Vertical Sign Support Detail

Qty	Wt	Length	A	B	C	D
5	514	6.203W	7.644W	1.004W	2.024W	2.024W

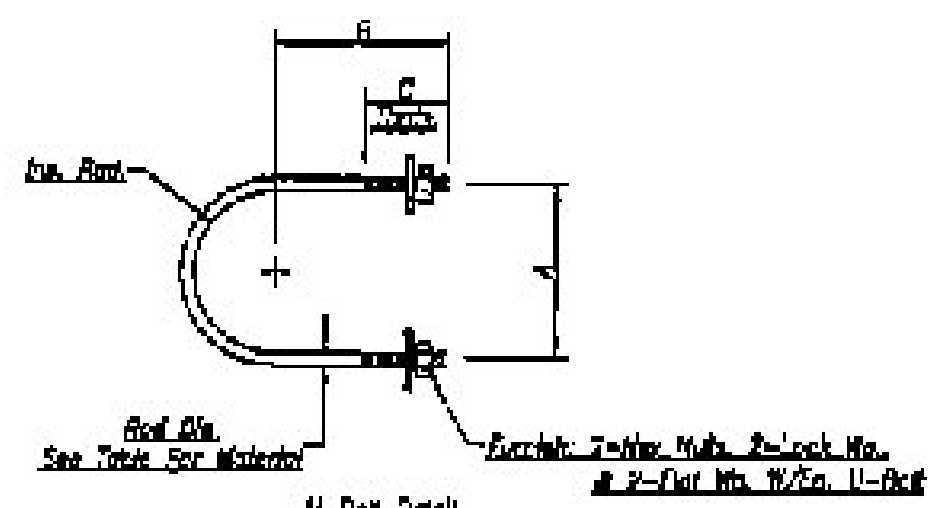


Flat Plate Detail

Qty	Wt	Con. Dia. (Part O.D.)	Part L.D.	Structure
4	RC7	219	263	E1F & E1H



Qty	Height	RFT No.	Date	1st Line Of Text	2nd Line Of Text	3rd Line Of Text	4th Line Of Text
1	3'	V7-11882		E1G = 219 O.D. x 8.2 W. x 0.2234	E1E = 216 O.D. x 8.2 W. x 7.2534	Span = 141 O.D. x 8.8 W. x 26.7744	4th Line Of Text



U-Bolt Detail

Qty	Wt	Std. Dia.	A	B	C	Std. Length	Grade	Comments
12	07	78.1	108	133	64	528	72	141 G.D. Chord To Endframe
24	08	12.7	180	110	51	472	73	Sign Support To 141 O.D. Chord

Bill of Material

Qty	Wt	Description	Length	Remarks
5	514	M12 x 1.40mm	6.203W	
4	RC7	M 84 x 263 O.D.		
12	07	78.1 x 8.2	0.1	
12	08	78.1 x 10 O.D. Round Head Std. Screws		
24	08	12.7 O.D. U-Bolt 1/2" - 141 O.D. 2 - Flat Washers 8.2 - Lock Washers		
12	07	12.7 O.D. U-Bolt 1/2" - 141 O.D. 2 - Flat Washers 8.2 - Lock Washers		
1		2 Sign (Standard Item)		
4		219 O.D. Flange (Standard Item)		



Notes:
 Refer To Detailing At Corners And Edges Of Steel Plates, Bolts, Etc. See The Owner's / 1.6mm Section
 All Dimensions Are In Millimeters Unless Otherwise Noted.
MATERIAL SPECIFICATIONS:
 Steel: Steel Sections To ASTM A360 Gr. 55
 Flanges: All Steel Flange Fabrication Per ASTM A123
 U-Bolts To Be ASTM A36
 Nuts & Washers For U-Bolts To Be ASTM A307
 Galvanized U-Bolts & Washers Per ASTM A153
 S.S. Bolts: ASTM A320 (A193 Series) Fasteners

Rev	By	Date	Description
1			

Brookfield Fabricating Corp
 100 Elm St - Brookfield, Vermont 05602 - (800)558-3274
 727 Intervale Ave
 (802) 878-1040
 Franklin County, Vermont
 Fabrication Details Of Sign Supports, Flat Sign & Other Accessories
 Sheet No. 2 of 6
 Printed For: [Blank] Drawn By: [Blank] Date: 12-26-10 Checked By: [Blank] Date: 12-29-10 Part No: V7-11882 Rev: [Blank]

RECEIVED

FEB 7 2012

G.P.I.