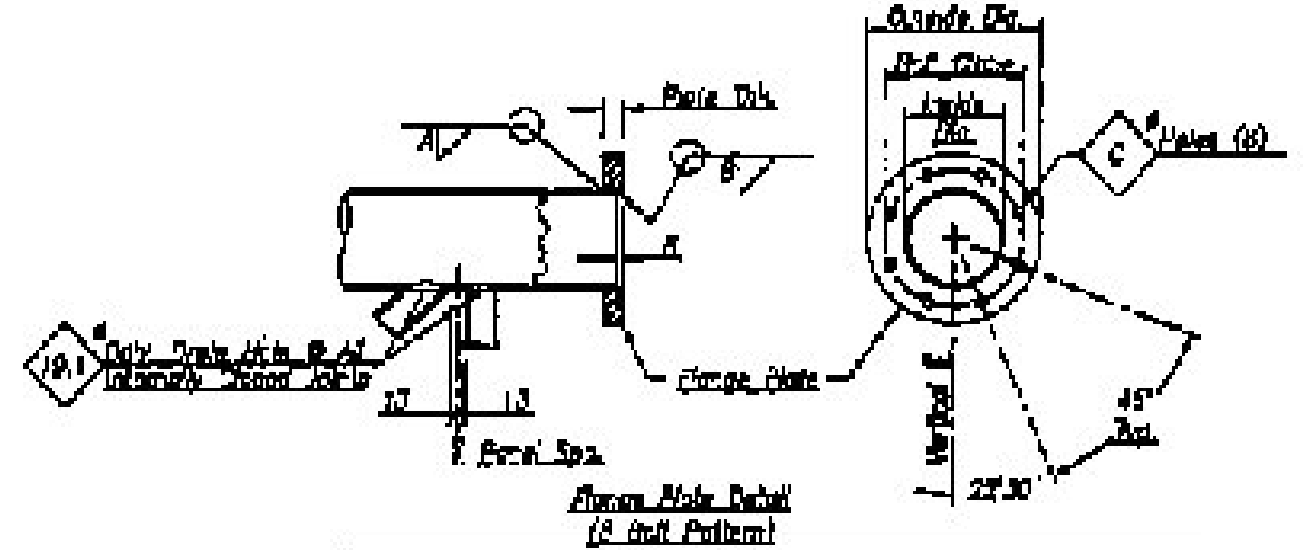
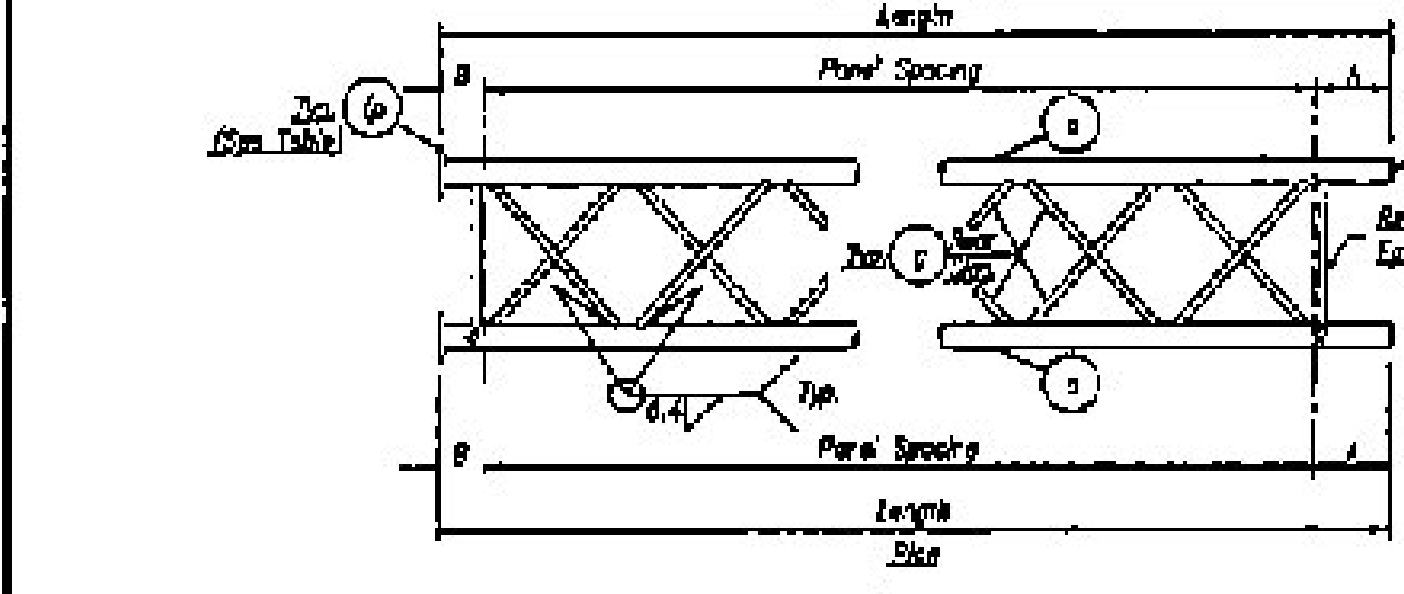


Truss Mt.	W	D	H
A/C/S/CR	1.225W	1.225D	7.364H

Bill of Material				
Qty.	Mt.	Description	Length	Remarks
3	A	1 1/2" x 2 1/2" x 1/4" PL	11.835W	
3	A	1/4"	4.654W	
24	Q2	46.3 Q2, P 1/4" x 1/4"	1.688W	48" x 1.688" @ 45°
48	Q2	1/4"	1.677W	48" x 1.688" @ 45°
8	Q2	46.3 Q2, P 1/4" x 1/4"	1.114W	48" x 1.114" @ 0°
12	Q2	1/4"	1.054W	48" x 1.114" @ 0°
8	A/C	73.64 x 8.6	118	
3	CR	3/4" x 1/4" x 1/4"		
12	Q2	1/4" x 1/4" x 1/4"		
48	Q2	1/4" x 1/4" x 1/4"		

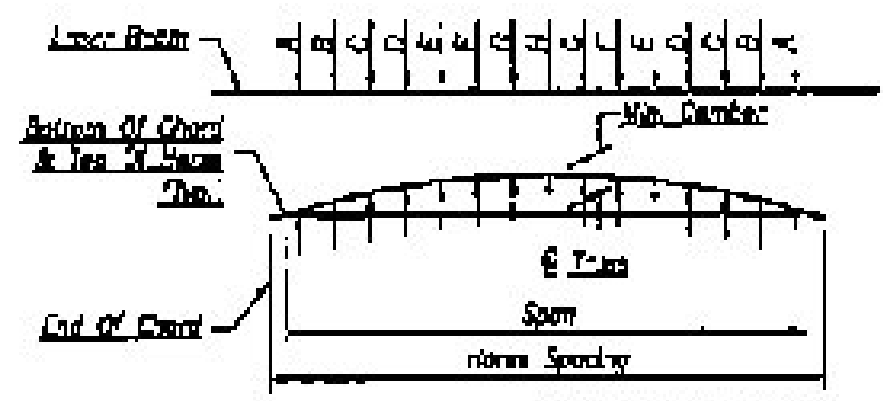
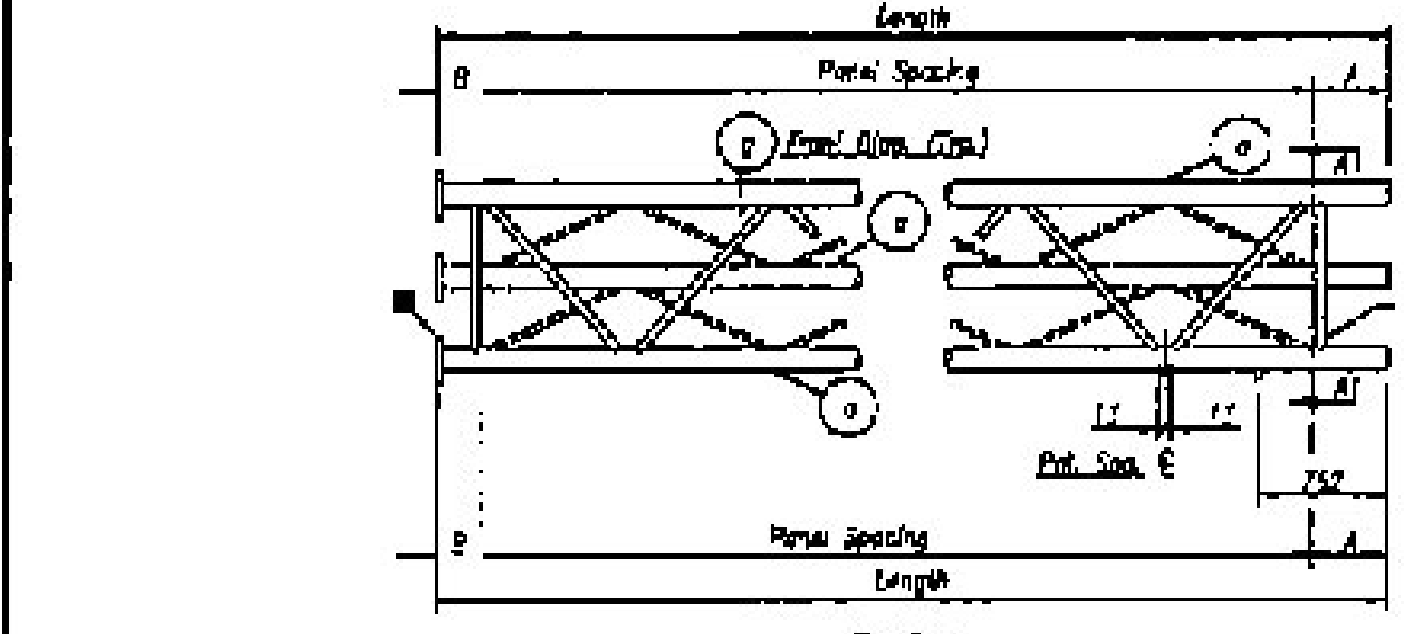
Qty.	Mt.	Length	Panel Spacing	A	B	Flange Mt.	End Stud Mt.	Front Stud Dia.	Rear Stud Dia.	Diagonals
1	B	11.835W	12 Spc @ 1.112W = 13.344W	5.34	20.3	Q2	Q2	1/2"	1/2"	Q2

Qty.	Mt.	Length	Panel Spacing	B	C	Flange Mt.	Front Stud	Rear Stud	Diagonals
1	CR	4.654W	4 Spc @ 1.112W = 4.448W	20.3	1.938W	Q2	1/2"	1/2"	Q2



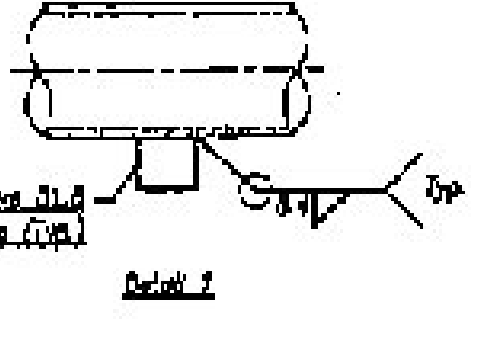
Qty.	Mt.	Outside Dia.	Root Circle	Inside Dia.	Plate Thk.	A	B	C
12	Q2	247	181	118	20.4	3.5	4.8	25.4

Qty.	Mt.	Length	Width	Chord Dia.
6	Q2	105	84	114 Q2



Truss Mt.	Panel Spacing	Min. Diameter	Span	A	B	C	D	E	F	G	H
B/C/S/CR	7 Panel Spc @ 1.112W	R3	28.114W	487	482	442	-	-	-	-	470

Qty.	Mt.	Length	Panel Spacing	A	B	Flange Mt.	End Stud Mt.	Front Stud Dia.	Rear Stud Dia.	Diagonals
1	CR	11.835W	12 Spc @ 1.112W = 13.344W	5.34	20.3	Q2	Q2	1/2"	1/2"	Q2



NOTE: The Truss Section Shall Be Assembled Together With The Support Stud Etc.  
 ■ Store Truss Section with No. on the Top of the Bottom Front Flange.  
 Prior to Erecting All Corners and Ends of Steel Plates, Straps, Etc. Shall Be Ground to A Smooth Finish.  
 All Dimensions Are to Midlines Unless Otherwise Noted.  
 MATERIAL SPECIFICATIONS:  
 Steel Chord & Truss Pipe Shall Be A57 Gr. 50, A51 Gr. 50, A53 Gr. B, A57 Gr. B, A57 Gr. C, A57 Gr. D, A57 Gr. E, A57 Gr. F, A57 Gr. G, A57 Gr. H, A57 Gr. I, A57 Gr. J, A57 Gr. K, A57 Gr. L, A57 Gr. M, A57 Gr. N, A57 Gr. O, A57 Gr. P, A57 Gr. Q, A57 Gr. R, A57 Gr. S, A57 Gr. T, A57 Gr. U, A57 Gr. V, A57 Gr. W, A57 Gr. X, A57 Gr. Y, A57 Gr. Z, A57 Gr. AA, A57 Gr. AB, A57 Gr. AC, A57 Gr. AD, A57 Gr. AE, A57 Gr. AF, A57 Gr. AG, A57 Gr. AH, A57 Gr. AI, A57 Gr. AJ, A57 Gr. AK, A57 Gr. AL, A57 Gr. AM, A57 Gr. AN, A57 Gr. AO, A57 Gr. AP, A57 Gr. AQ, A57 Gr. AR, A57 Gr. AS, A57 Gr. AT, A57 Gr. AU, A57 Gr. AV, A57 Gr. AW, A57 Gr. AX, A57 Gr. AY, A57 Gr. AZ, A57 Gr. BA, A57 Gr. BB, A57 Gr. BC, A57 Gr. BD, A57 Gr. BE, A57 Gr. BF, A57 Gr. BG, A57 Gr. BH, A57 Gr. BI, A57 Gr. BJ, A57 Gr. BK, A57 Gr. BL, A57 Gr. BM, A57 Gr. BN, A57 Gr. BO, A57 Gr. BP, A57 Gr. BQ, A57 Gr. BR, A57 Gr. BS, A57 Gr. BT, A57 Gr. BU, A57 Gr. BV, A57 Gr. BW, A57 Gr. BX, A57 Gr. BY, A57 Gr. BZ, A57 Gr. CA, A57 Gr. CB, A57 Gr. CC, A57 Gr. CD, A57 Gr. CE, A57 Gr. CF, A57 Gr. CG, A57 Gr. CH, A57 Gr. CI, A57 Gr. CJ, A57 Gr. CK, A57 Gr. CL, A57 Gr. CM, A57 Gr. CN, A57 Gr. CO, A57 Gr. CP, A57 Gr. CQ, A57 Gr. CR, A57 Gr. CS, A57 Gr. CT, A57 Gr. CU, A57 Gr. CV, A57 Gr. CW, A57 Gr. CX, A57 Gr. CY, A57 Gr. CZ, A57 Gr. DA, A57 Gr. DB, A57 Gr. DC, A57 Gr. DD, A57 Gr. DE, A57 Gr. DF, A57 Gr. DG, A57 Gr. DH, A57 Gr. DI, A57 Gr. DJ, A57 Gr. DK, A57 Gr. DL, A57 Gr. DM, A57 Gr. DN, A57 Gr. DO, A57 Gr. DP, A57 Gr. DQ, A57 Gr. DR, A57 Gr. DS, A57 Gr. DT, A57 Gr. DU, A57 Gr. DV, A57 Gr. DW, A57 Gr. DX, A57 Gr. DY, A57 Gr. DZ, A57 Gr. EA, A57 Gr. EB, A57 Gr. EC, A57 Gr. ED, A57 Gr. EE, A57 Gr. EF, A57 Gr. EG, A57 Gr. EH, A57 Gr. EI, A57 Gr. EJ, A57 Gr. EK, A57 Gr. EL, A57 Gr. EM, A57 Gr. EN, A57 Gr. EO, A57 Gr. EP, A57 Gr. EQ, A57 Gr. ER, A57 Gr. ES, A57 Gr. ET, A57 Gr. EU, A57 Gr. EV, A57 Gr. EW, A57 Gr. EX, A57 Gr. EY, A57 Gr. EZ, A57 Gr. FA, A57 Gr. FB, A57 Gr. FC, A57 Gr. FD, A57 Gr. FE, A57 Gr. FF, A57 Gr. FG, A57 Gr. FH, A57 Gr. FI, A57 Gr. FJ, A57 Gr. FK, A57 Gr. FL, A57 Gr. FM, A57 Gr. FN, A57 Gr. FO, A57 Gr. FP, A57 Gr. FQ, A57 Gr. FR, A57 Gr. FS, A57 Gr. FT, A57 Gr. FU, A57 Gr. FV, A57 Gr. FW, A57 Gr. FX, A57 Gr. FY, A57 Gr. FZ, A57 Gr. GA, A57 Gr. GB, A57 Gr. GC, A57 Gr. GD, A57 Gr. GE, A57 Gr. GF, A57 Gr. GG, A57 Gr. GH, A57 Gr. GI, A57 Gr. GJ, A57 Gr. GK, A57 Gr. GL, A57 Gr. GM, A57 Gr. GN, A57 Gr. GO, A57 Gr. GP, A57 Gr. GQ, A57 Gr. GR, A57 Gr. GS, A57 Gr. GT, A57 Gr. GU, A57 Gr. GV, A57 Gr. GW, A57 Gr. GX, A57 Gr. GY, A57 Gr. GZ, A57 Gr. HA, A57 Gr. HB, A57 Gr. HC, A57 Gr. HD, A57 Gr. HE, A57 Gr. HF, A57 Gr. HG, A57 Gr. HH, A57 Gr. HI, A57 Gr. HJ, A57 Gr. HK, A57 Gr. HL, A57 Gr. HM, A57 Gr. HN, A57 Gr. HO, A57 Gr. HP, A57 Gr. HQ, A57 Gr. HR, A57 Gr. HS, A57 Gr. HT, A57 Gr. HU, A57 Gr. HV, A57 Gr. HW, A57 Gr. HX, A57 Gr. HY, A57 Gr. HZ, A57 Gr. IA, A57 Gr. IB, A57 Gr. IC, A57 Gr. ID, A57 Gr. IE, A57 Gr. IF, A57 Gr. IG, A57 Gr. IH, A57 Gr. II, A57 Gr. IJ, A57 Gr. IK, A57 Gr. IL, A57 Gr. IM, A57 Gr. IN, A57 Gr. IO, A57 Gr. IP, A57 Gr. IQ, A57 Gr. IR, A57 Gr. IS, A57 Gr. IT, A57 Gr. IU, A57 Gr. IV, A57 Gr. IW, A57 Gr. IX, A57 Gr. IY, A57 Gr. IZ, A57 Gr. JA, A57 Gr. JB, A57 Gr. JC, A57 Gr. JD, A57 Gr. JE, A57 Gr. JF, A57 Gr. JG, A57 Gr. JH, A57 Gr. JI, A57 Gr. JJ, A57 Gr. JK, A57 Gr. JL, A57 Gr. JM, A57 Gr. JN, A57 Gr. JO, A57 Gr. JP, A57 Gr. JQ, A57 Gr. JR, A57 Gr. JS, A57 Gr. JT, A57 Gr. JU, A57 Gr. JV, A57 Gr. JW, A57 Gr. JX, A57 Gr. JY, A57 Gr. JZ, A57 Gr. KA, A57 Gr. KB, A57 Gr. KC, A57 Gr. KD, A57 Gr. KE, A57 Gr. KF, A57 Gr. KG, A57 Gr. KH, A57 Gr. KI, A57 Gr. KJ, A57 Gr. KK, A57 Gr. KL, A57 Gr. KM, A57 Gr. KN, A57 Gr. KO, A57 Gr. KP, A57 Gr. KQ, A57 Gr. KR, A57 Gr. KS, A57 Gr. KT, A57 Gr. KU, A57 Gr. KV, A57 Gr. KW, A57 Gr. KX, A57 Gr. KY, A57 Gr. KZ, A57 Gr. LA, A57 Gr. LB, A57 Gr. LC, A57 Gr. LD, A57 Gr. LE, A57 Gr. LF, A57 Gr. LG, A57 Gr. LH, A57 Gr. LI, A57 Gr. LJ, A57 Gr. LK, A57 Gr. LL, A57 Gr. LM, A57 Gr. LN, A57 Gr. LO, A57 Gr. LP, A57 Gr. LQ, A57 Gr. LR, A57 Gr. LS, A57 Gr. LT, A57 Gr. LU, A57 Gr. LV, A57 Gr. LW, A57 Gr. LX, A57 Gr. LY, A57 Gr. LZ, A57 Gr. MA, A57 Gr. MB, A57 Gr. MC, A57 Gr. MD, A57 Gr. ME, A57 Gr. MF, A57 Gr. MG, A57 Gr. MH, A57 Gr. MI, A57 Gr. MJ, A57 Gr. MK, A57 Gr. ML, A57 Gr. MM, A57 Gr. MN, A57 Gr. MO, A57 Gr. MP, A57 Gr. MQ, A57 Gr. MR, A57 Gr. MS, A57 Gr. MT, A57 Gr. MU, A57 Gr. MV, A57 Gr. MW, A57 Gr. MX, A57 Gr. MY, A57 Gr. MZ, A57 Gr. NA, A57 Gr. NB, A57 Gr. NC, A57 Gr. ND, A57 Gr. NE, A57 Gr. NF, A57 Gr. NG, A57 Gr. NH, A57 Gr. NI, A57 Gr. NJ, A57 Gr. NK, A57 Gr. NL, A57 Gr. NM, A57 Gr. NN, A57 Gr. NO, A57 Gr. NP, A57 Gr. NQ, A57 Gr. NR, A57 Gr. NS, A57 Gr. NT, A57 Gr. NU, A57 Gr. NV, A57 Gr. NW, A57 Gr. NX, A57 Gr. NY, A57 Gr. NZ, A57 Gr. OA, A57 Gr. OB, A57 Gr. OC, A57 Gr. OD, A57 Gr. OE, A57 Gr. OF, A57 Gr. OG, A57 Gr. OH, A57 Gr. OI, A57 Gr. OJ, A57 Gr. OK, A57 Gr. OL, A57 Gr. OM, A57 Gr. ON, A57 Gr. OO, A57 Gr. OP, A57 Gr. OQ, A57 Gr. OR, A57 Gr. OS, A57 Gr. OT, A57 Gr. OU, A57 Gr. OV, A57 Gr. OW, A57 Gr. OX, A57 Gr. OY, A57 Gr. OZ, A57 Gr. PA, A57 Gr. PB, A57 Gr. PC, A57 Gr. PD, A57 Gr. PE, A57 Gr. PF, A57 Gr. PG, A57 Gr. PH, A57 Gr. PI, A57 Gr. PJ, A57 Gr. PK, A57 Gr. PL, A57 Gr. PM, A57 Gr. PN, A57 Gr. PO, A57 Gr. PP, A57 Gr. PQ, A57 Gr. PR, A57 Gr. PS, A57 Gr. PT, A57 Gr. PU, A57 Gr. PV, A57 Gr. PW, A57 Gr. PX, A57 Gr. PY, A57 Gr. PZ, A57 Gr. QA, A57 Gr. QB, A57 Gr. QC, A57 Gr. QD, A57 Gr. QE, A57 Gr. QF, A57 Gr. QG, A57 Gr. QH, A57 Gr. QI, A57 Gr. QJ, A57 Gr. QK, A57 Gr. QL, A57 Gr. QM, A57 Gr. QN, A57 Gr. QO, A57 Gr. QP, A57 Gr. QQ, A57 Gr. QR, A57 Gr. QS, A57 Gr. QT, A57 Gr. QU, A57 Gr. QV, A57 Gr. QW, A57 Gr. QX, A57 Gr. QY, A57 Gr. QZ, A57 Gr. RA, A57 Gr. RB, A57 Gr. RC, A57 Gr. RD, A57 Gr. RE, A57 Gr. RF, A57 Gr. RG, A57 Gr. RH, A57 Gr. RI, A57 Gr. RJ, A57 Gr. RK, A57 Gr. RL, A57 Gr. RM, A57 Gr. RN, A57 Gr. RO, A57 Gr. RP, A57 Gr. RQ, A57 Gr. RR, A57 Gr. RS, A57 Gr. RT, A57 Gr. RU, A57 Gr. RV, A57 Gr. RW, A57 Gr. RX, A57 Gr. RY, A57 Gr. RZ, A57 Gr. SA, A57 Gr. SB, A57 Gr. SC, A57 Gr. SD, A57 Gr. SE, A57 Gr. SF, A57 Gr. SG, A57 Gr. SH, A57 Gr. SI, A57 Gr. SJ, A57 Gr. SK, A57 Gr. SL, A57 Gr. SM, A57 Gr. SN, A57 Gr. SO, A57 Gr. SP, A57 Gr. SQ, A57 Gr. SR, A57 Gr. SS, A57 Gr. ST, A57 Gr. SU, A57 Gr. SV, A57 Gr. SW, A57 Gr. SX, A57 Gr. SY, A57 Gr. SZ, A57 Gr. TA, A57 Gr. TB, A57 Gr. TC, A57 Gr. TD, A57 Gr. TE, A57 Gr. TF, A57 Gr. TG, A57 Gr. TH, A57 Gr. TI, A57 Gr. TJ, A57 Gr. TK, A57 Gr. TL, A57 Gr. TM, A57 Gr. TN, A57 Gr. TO, A57 Gr. TP, A57 Gr. TQ, A57 Gr. TR, A57 Gr. TS, A57 Gr. TT, A57 Gr. TU, A57 Gr. TV, A57 Gr. TW, A57 Gr. TX, A57 Gr. TY, A57 Gr. TZ, A57 Gr. UA, A57 Gr. UB, A57 Gr. UC, A57 Gr. UD, A57 Gr. UE, A57 Gr. UF, A57 Gr. UG, A57 Gr. UH, A57 Gr. UI, A57 Gr. UJ, A57 Gr. UK, A57 Gr. UL, A57 Gr. UM, A57 Gr. UN, A57 Gr. UO, A57 Gr. UP, A57 Gr. UQ, A57 Gr. UR, A57 Gr. US, A57 Gr. UT, A57 Gr. UY, A57 Gr. UZ, A57 Gr. VA, A57 Gr. VB, A57 Gr. VC, A57 Gr. VD, A57 Gr. VE, A57 Gr. VF, A57 Gr. VG, A57 Gr. VH, A57 Gr. VI, A57 Gr. VJ, A57 Gr. VK, A57 Gr. VL, A57 Gr. VM, A57 Gr. VN, A57 Gr. VO, A57 Gr. VP, A57 Gr. VQ, A57 Gr. VR, A57 Gr. VS, A57 Gr. VT, A57 Gr. VU, A57 Gr. VV, A57 Gr. VW, A57 Gr. VX, A57 Gr. VY, A57 Gr. VZ, A57 Gr. WA, A57 Gr. WB, A57 Gr. WC, A57 Gr. WD, A57 Gr. WE, A57 Gr. WF, A57 Gr. WG, A57 Gr. WH, A57 Gr. WI, A57 Gr. WJ, A57 Gr. WK, A57 Gr. WL, A57 Gr. WM, A57 Gr. WN, A57 Gr. WO, A57 Gr. WP, A57 Gr. WQ, A57 Gr. WR, A57 Gr. WS, A57 Gr. WT, A57 Gr. WU, A57 Gr. WV, A57 Gr. WW, A57 Gr. WX, A57 Gr. WY, A57 Gr. WZ, A57 Gr. XA, A57 Gr. XB, A57 Gr. XC, A57 Gr. XD, A57 Gr. XE, A57 Gr. XF, A57 Gr. XG, A57 Gr. XH, A57 Gr. XI, A57 Gr. XJ, A57 Gr. XK, A57 Gr. XL, A57 Gr. XM, A57 Gr. XN, A57 Gr. XO, A57 Gr. XP, A57 Gr. XQ, A57 Gr. XR, A57 Gr. XS, A57 Gr. XT, A57 Gr. XU, A57 Gr. XV, A57 Gr. XW, A57 Gr. XX, A57 Gr. XY, A57 Gr. XZ, A57 Gr. YA, A57 Gr. YB, A57 Gr. YC, A57 Gr. YD, A57 Gr. YE, A57 Gr. YF, A57 Gr. YG, A57 Gr. YH, A57 Gr. YI, A57 Gr. YJ, A57 Gr. YK, A57 Gr. YL, A57 Gr. YM, A57 Gr. YN, A57 Gr. YO, A57 Gr. YP, A57 Gr. YQ, A57 Gr. YR, A57 Gr. YS, A57 Gr. YT, A57 Gr. YU, A57 Gr. YV, A57 Gr. YW, A57 Gr. YX, A57 Gr. YY, A57 Gr. YZ, A57 Gr. ZA, A57 Gr. ZB, A57 Gr. ZC, A57 Gr. ZD, A57 Gr. ZE, A57 Gr. ZF, A57 Gr. ZG, A57 Gr. ZH, A57 Gr. ZI, A57 Gr. ZJ, A57 Gr. ZK, A57 Gr. ZL, A57 Gr. ZM, A57 Gr. ZN, A57 Gr. ZO, A57 Gr. ZP, A57 Gr. ZQ, A57 Gr. ZR, A57 Gr. ZS, A57 Gr. ZT, A57 Gr. ZU, A57 Gr. ZV, A57 Gr. ZW, A57 Gr. ZX, A57 Gr. ZY, A57 Gr. ZZ

Welding Code: All Design Details Shall Conform to the American Institute of Steel Construction, Inc. Specification for Structural Steel Buildings, 10th Edition, 2010.

Rev.	By	Date	Description
1	...	...	...

**Brookfield Fabricating Corp**  
 P.O. Box 404 - Brookfield, Vermont 05603 - (802) 854-2514  
 P.O. 145406, Vt.

RECEIVED  
 FEB 7 2012  
 G.P.I.