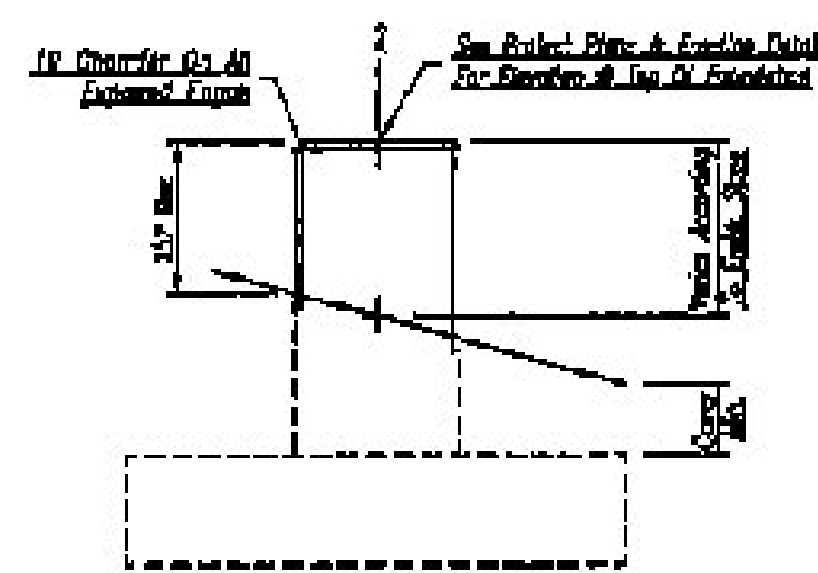


- NOTES:
1. Reinforce steel double pile column & foundation cap.
  2. All other dimensions are as shown on drawings.
  3. Foundation & column reinforcement shall meet requirements of ACI 318-05.
  4. Minimum steel reinforcement shall be provided for these foundations in accordance with ACI 318-05.
  5. Minimum concrete strength of concrete shall be 27.6 MPa.
  6. Reinforcement shall be in accordance with A.S.T.M. A631-02.
  7. Reinforcement shall be in accordance with A.S.T.M. A631-02.
  8. Reinforcement shall be in accordance with A.S.T.M. A631-02.
  9. Reinforcement shall be in accordance with A.S.T.M. A631-02.
  10. Reinforcement shall be in accordance with A.S.T.M. A631-02.

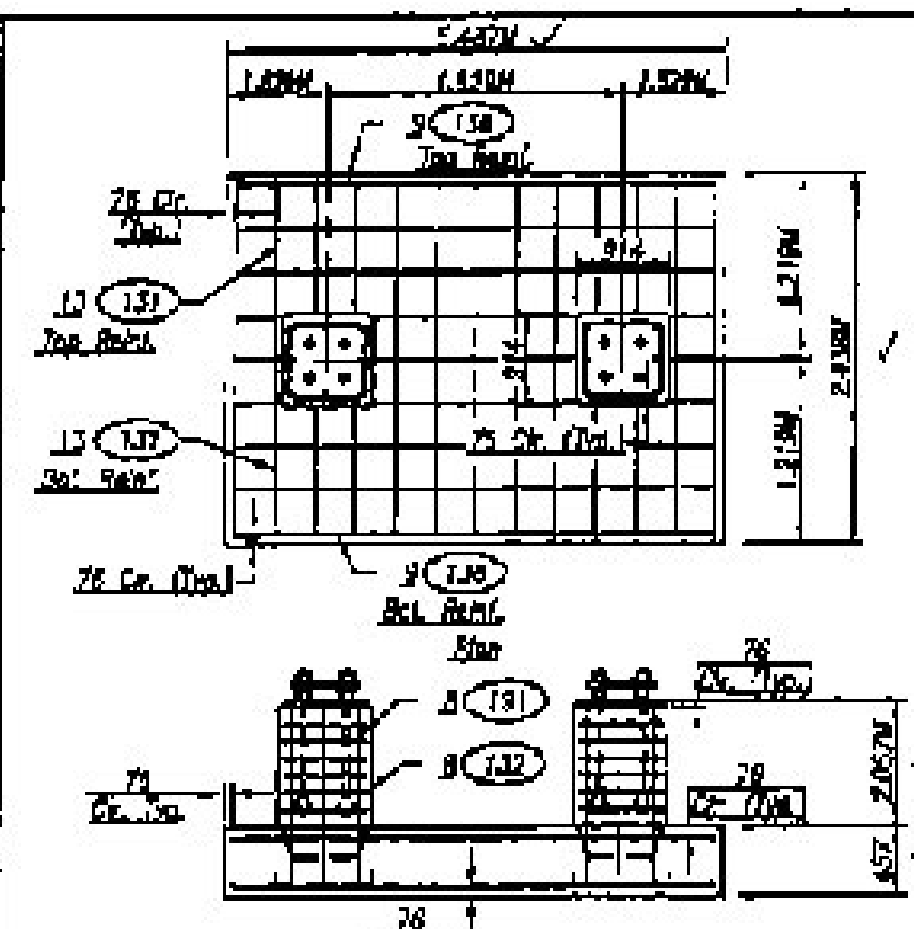


Bar No.	Quantity
F3	1.000
F4	4.000
F5	8.000
F6	1.000

Concrete Volume: 0.000 cu. meters  
Steel Weight: 0.000 kg.

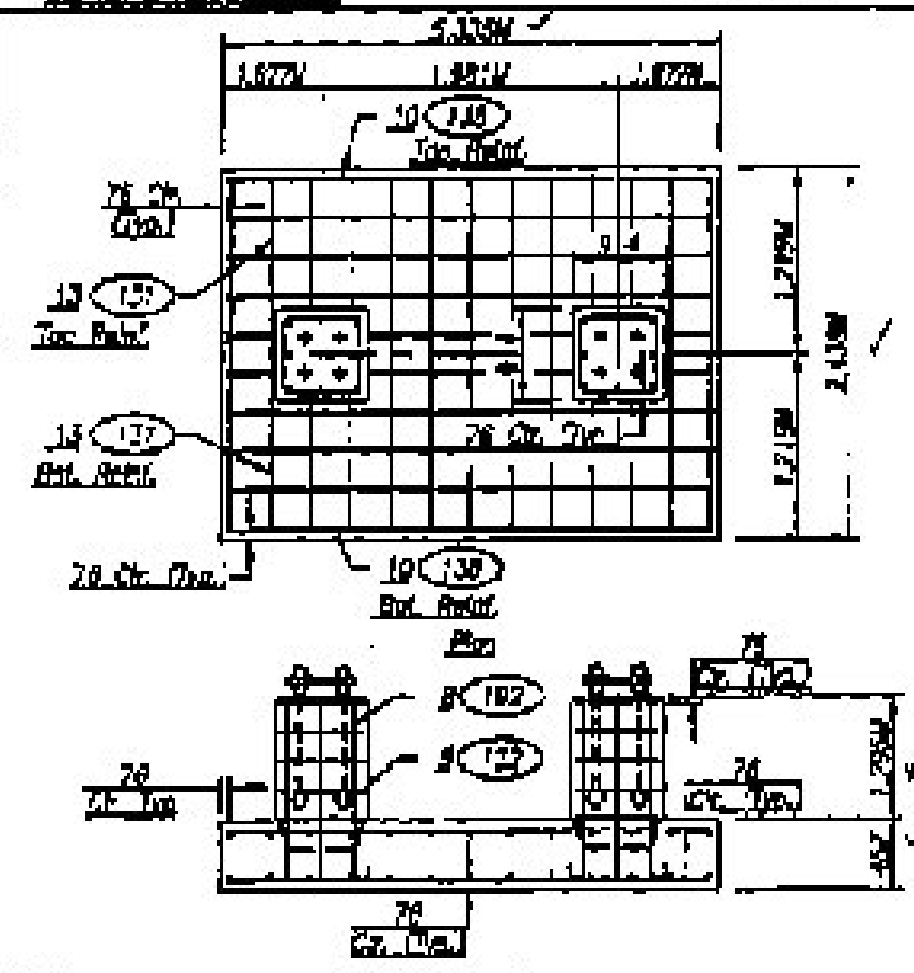
Qty.	Bar No.	Bar Size	Length	Weight
10	F1	#10	2.280M	2.047M
10	F2	#10	1.324M	1.065M
30	F3	#10	1.077M	2.538M

Reinforcing Schedule  
Steel Reinforcement shall meet the requirements of A.S.T.M. A631-02.



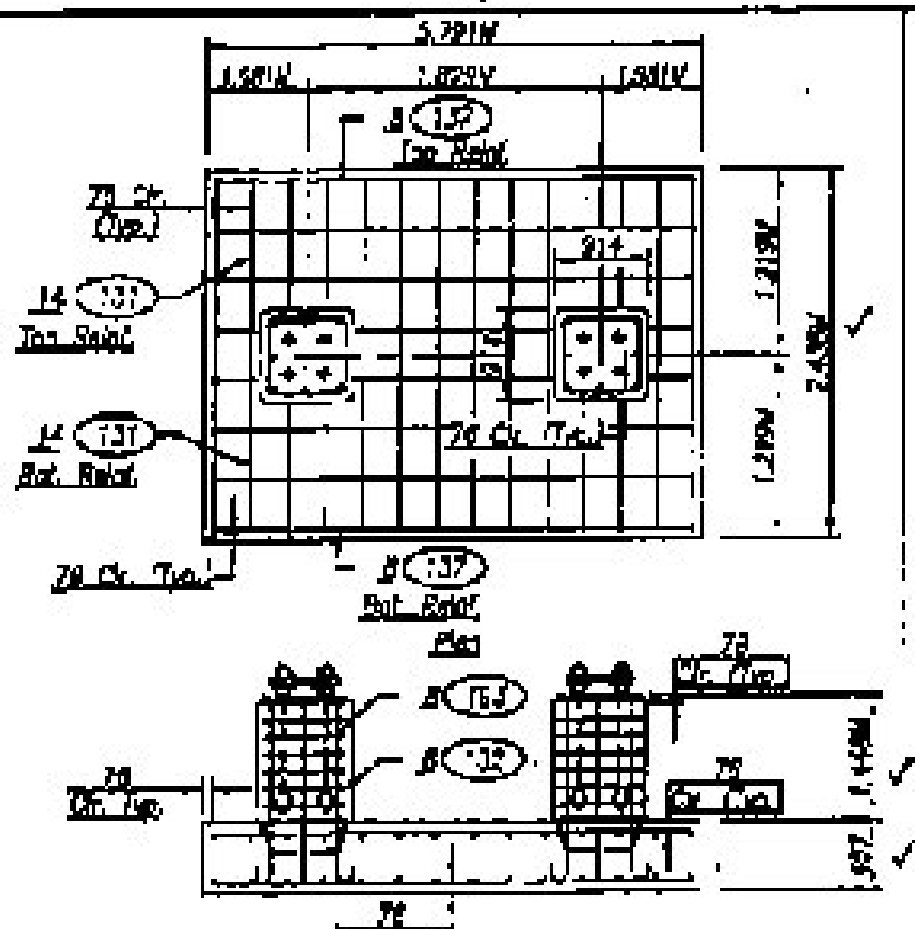
NOTES:

1. Reinforce steel double pile column & foundation cap.
2. All other dimensions are as shown on drawings.
3. Foundation & column reinforcement shall meet requirements of ACI 318-05.
4. Minimum steel reinforcement shall be provided for these foundations in accordance with ACI 318-05.
5. Minimum concrete strength of concrete shall be 27.6 MPa.
6. Reinforcement shall be in accordance with A.S.T.M. A631-02.
7. Reinforcement shall be in accordance with A.S.T.M. A631-02.
8. Reinforcement shall be in accordance with A.S.T.M. A631-02.
9. Reinforcement shall be in accordance with A.S.T.M. A631-02.
10. Reinforcement shall be in accordance with A.S.T.M. A631-02.



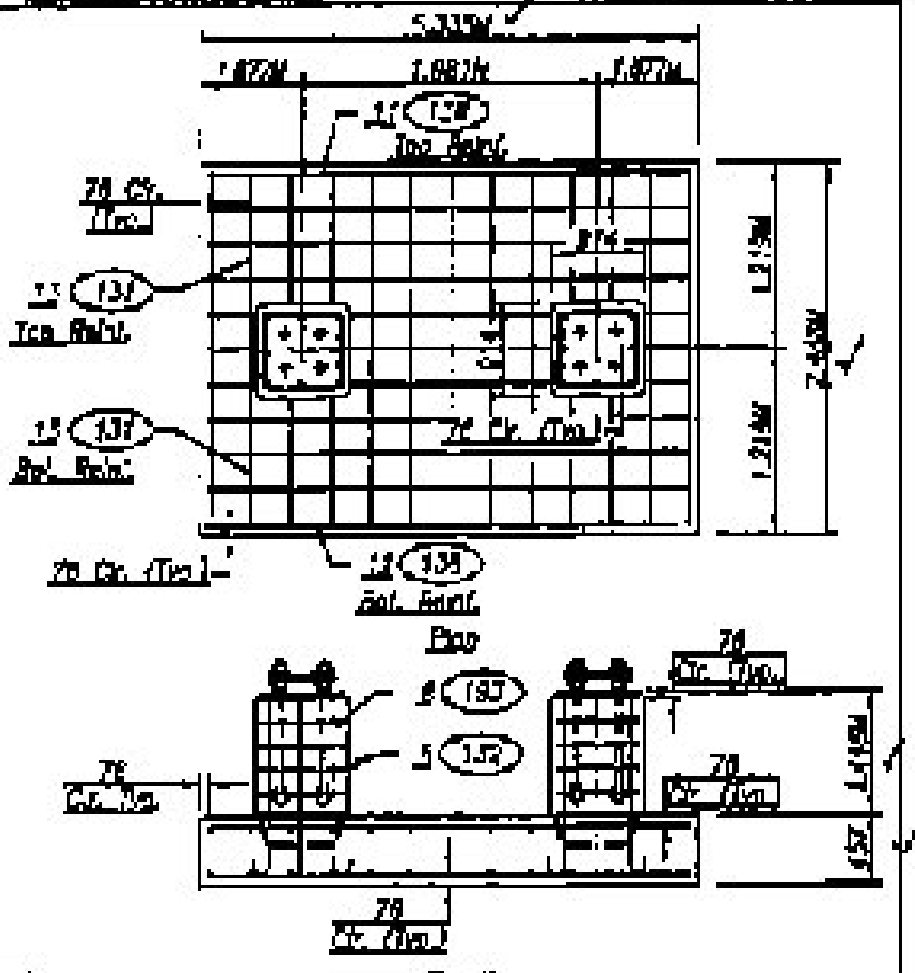
NOTES:

1. Reinforce steel double pile column & foundation cap.
2. All other dimensions are as shown on drawings.
3. Foundation & column reinforcement shall meet requirements of ACI 318-05.
4. Minimum steel reinforcement shall be provided for these foundations in accordance with ACI 318-05.
5. Minimum concrete strength of concrete shall be 27.6 MPa.
6. Reinforcement shall be in accordance with A.S.T.M. A631-02.
7. Reinforcement shall be in accordance with A.S.T.M. A631-02.
8. Reinforcement shall be in accordance with A.S.T.M. A631-02.
9. Reinforcement shall be in accordance with A.S.T.M. A631-02.
10. Reinforcement shall be in accordance with A.S.T.M. A631-02.



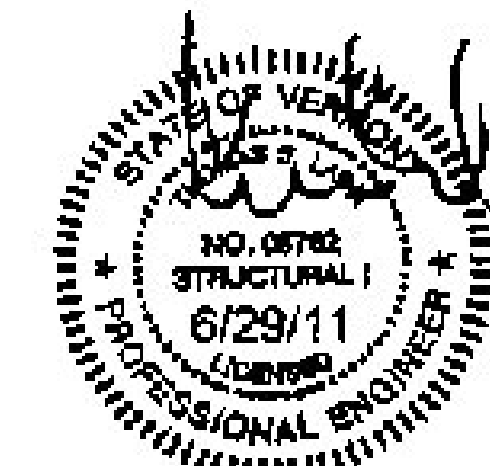
NOTES:

1. Reinforce steel double pile column & foundation cap.
2. All other dimensions are as shown on drawings.
3. Foundation & column reinforcement shall meet requirements of ACI 318-05.
4. Minimum steel reinforcement shall be provided for these foundations in accordance with ACI 318-05.
5. Minimum concrete strength of concrete shall be 27.6 MPa.
6. Reinforcement shall be in accordance with A.S.T.M. A631-02.
7. Reinforcement shall be in accordance with A.S.T.M. A631-02.
8. Reinforcement shall be in accordance with A.S.T.M. A631-02.
9. Reinforcement shall be in accordance with A.S.T.M. A631-02.
10. Reinforcement shall be in accordance with A.S.T.M. A631-02.



NOTES:

1. Reinforce steel double pile column & foundation cap.
2. All other dimensions are as shown on drawings.
3. Foundation & column reinforcement shall meet requirements of ACI 318-05.
4. Minimum steel reinforcement shall be provided for these foundations in accordance with ACI 318-05.
5. Minimum concrete strength of concrete shall be 27.6 MPa.
6. Reinforcement shall be in accordance with A.S.T.M. A631-02.
7. Reinforcement shall be in accordance with A.S.T.M. A631-02.
8. Reinforcement shall be in accordance with A.S.T.M. A631-02.
9. Reinforcement shall be in accordance with A.S.T.M. A631-02.
10. Reinforcement shall be in accordance with A.S.T.M. A631-02.



PROJECT NO.	DATE	BY	CHKD.
NO. 08762	6/29/11		
<b>Breakfield Fabricating Corp</b>			
P.O. Box 4000, Ferrisburgh, Vermont 05752-0400			
Tel: 802-888-1111			
Fax: 802-888-1112			
www.breakfield.com			
Foundation Details of Spread Footings for Double Pile Columns			
Sheet 4 of 14			

RECEIVED  
FEB 7 2012  
G.P.I.