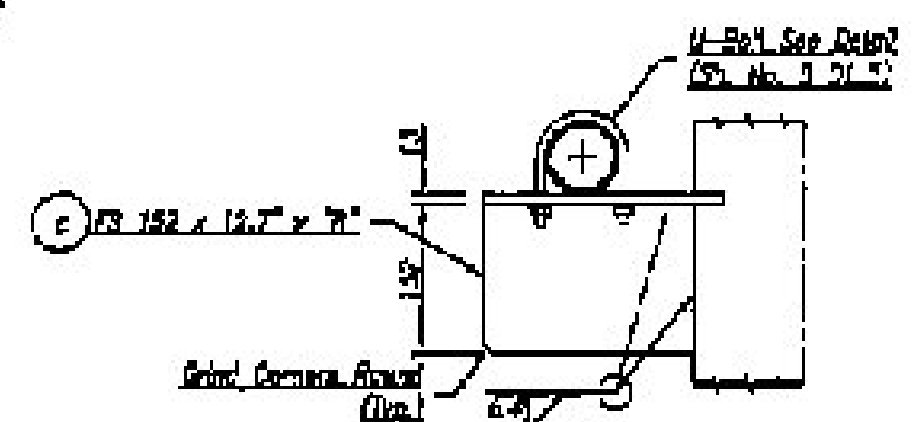
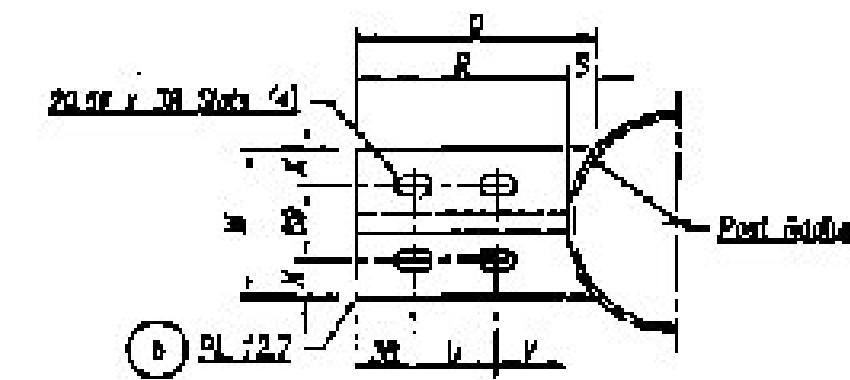
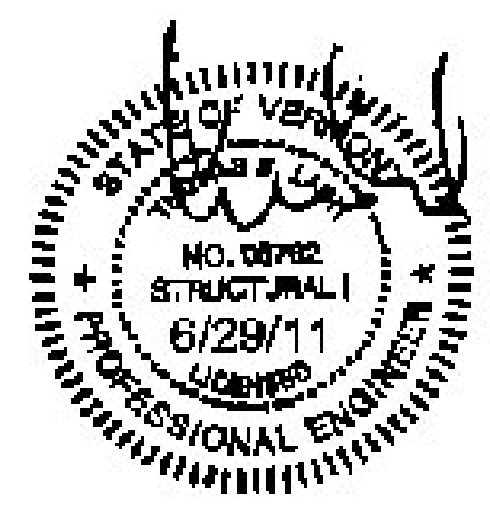
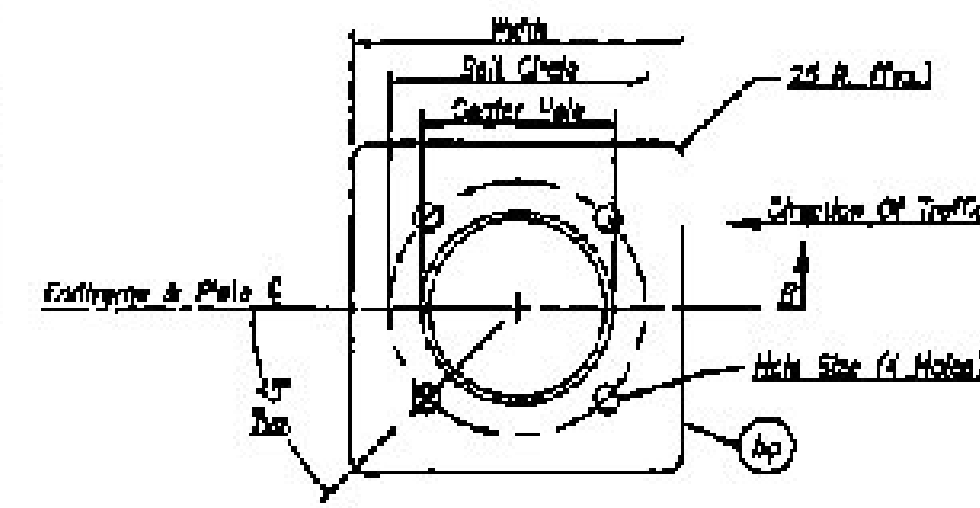
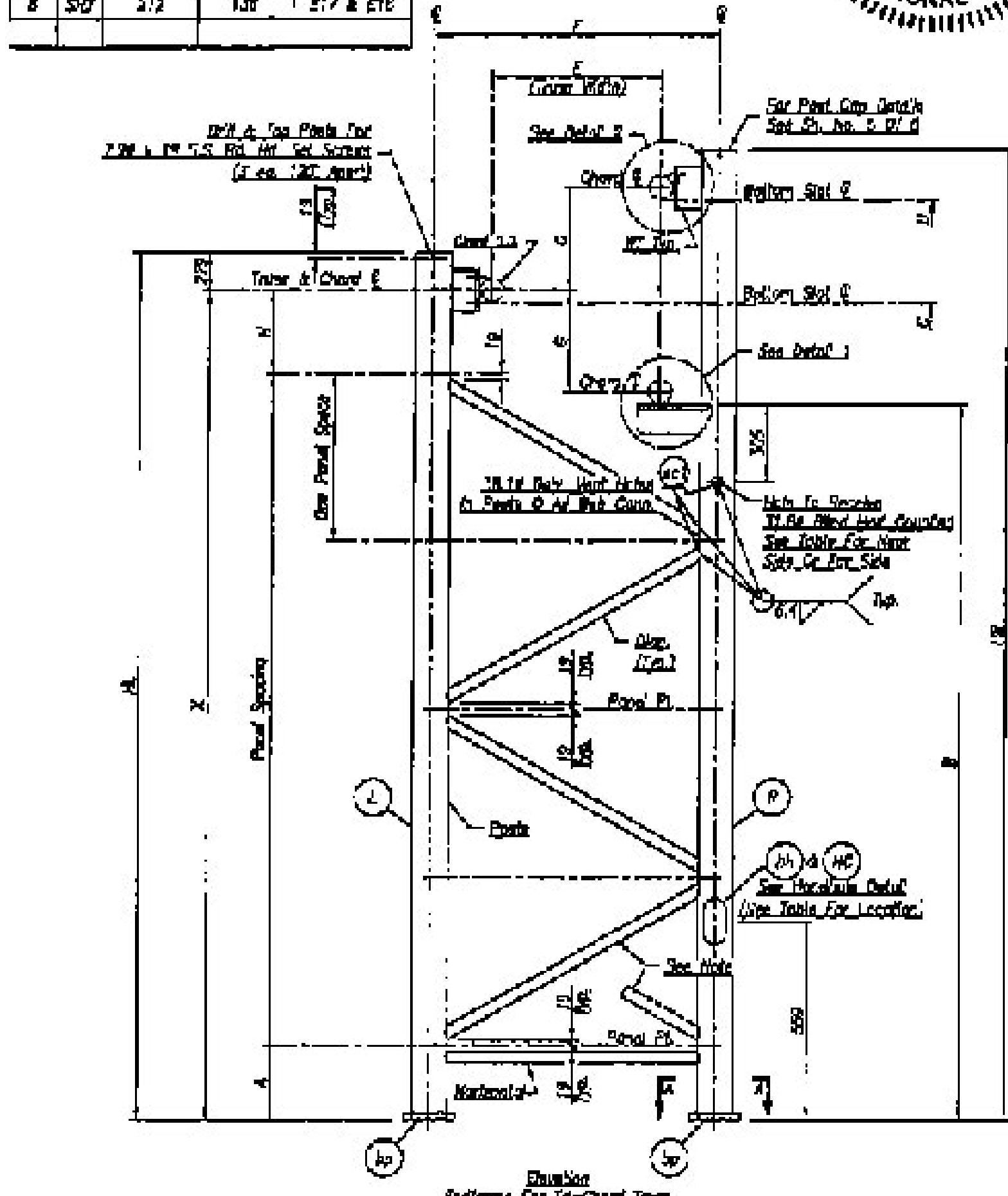
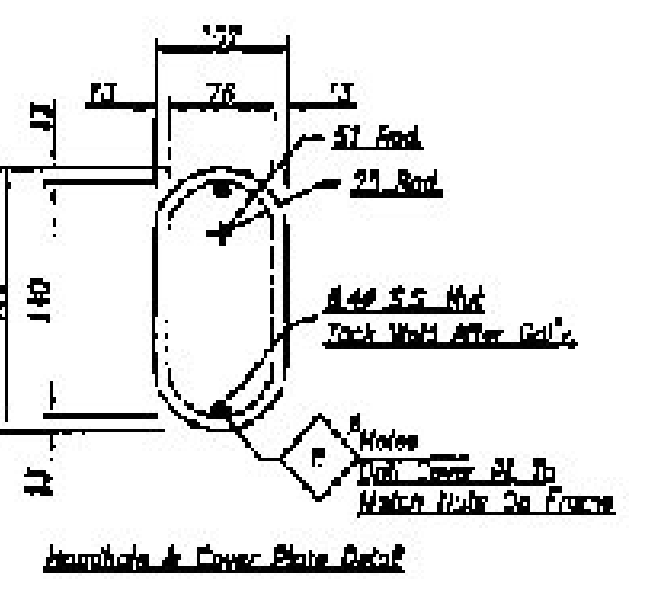
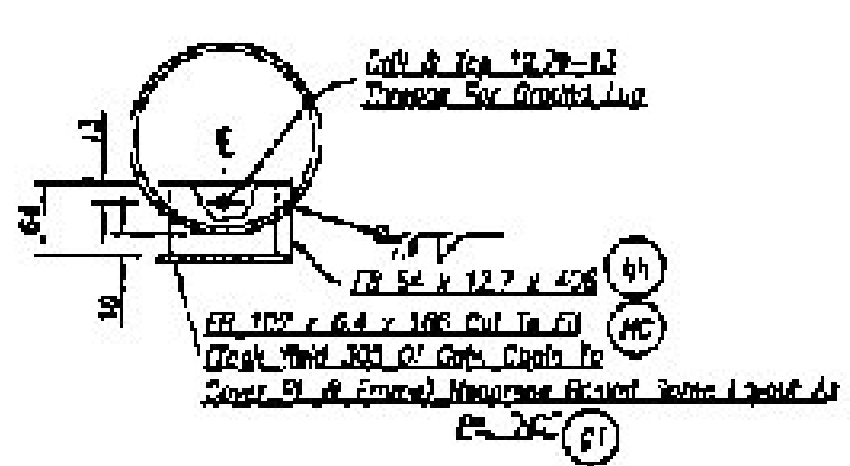


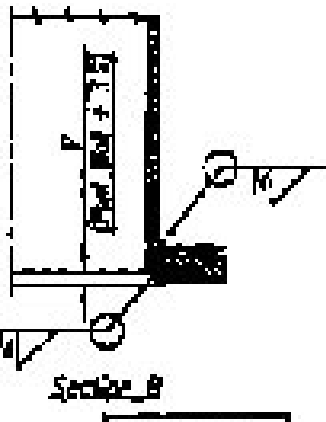
Qty	Mk	Dim. 1"	Dim. 2"	Endframe Mk
6	57	212	137	E17 & E18



Qty	Mk	Plate No.	Q	R	S	U	V	W	X	Part Number
1	53	63	335	274	27	128	100	228	89	127
1	57	67	367	301	48	139	127	178	44	110



Qty	Plate No.	Plate No.	Ch. Hole	S&T Circle	Width	Foot Hole
2	62	31.8	278	408	394	36.1
2	64	31.8	222	405	394	36.1



Endframe Mk	W	H	P
E17 & E18	7.3	8.7	11

Brace Pipe											
Qty	Mk	Length	Dim. 1"	Dim. 2"	Dim. 3"	WT. Lb.	Base Plate No.	"m"	For		
2	63	336	88	138	88						
2	67	336	122	138	88						

NOTE: Shop Practices In Tackled At All Ends From The Top Down. However, In End Practice Of Plates Will Be In Custom Clearance Loading On Front End. See Table For Number Of Plates.

Structure Loc.	Frame Mk	Column Size	HL	WR	Chord C.G.	Panel Spacing	X	A	D	C	D	E	F	G	H	Diag. Angle	Pipe Size	WT. Lb.	Base Plate No.	"m"	For	
104-30.0	E17	278 C2 x L2 W	8.882M	10.848M	F14	2 Sps @ 1.831M	6.230M	257	8.882M	8.882M	12.391M	1.272M	1.281M	888	358	#17 #18	280 C2 x L2 W	62	63	2P	For side	Horizontal
	E18	278 C2 x L2 W	8.882M	8.882M	F14	4 Sps @ 1.831M	6.230M	458	7.881M	6.882M	3.324M	1.272M	1.281M	888	358	#12 #13	"	67	68A	2P	Horizontal	For Side

Qty	Mk	Description	LENGTH	Remarks
1	E17	278 C2 x L2 W	8.882M	
1	E18	278 C2 x L2 W	8.882M	
1	E19	278 C2 x L2 W	8.882M	
1	E20	278 C2 x L2 W	8.882M	
1	E21	278 C2 x L2 W	8.882M	
1	E22	278 C2 x L2 W	8.882M	
1	E23	278 C2 x L2 W	8.882M	
1	E24	278 C2 x L2 W	8.882M	
1	E25	278 C2 x L2 W	8.882M	
1	E26	278 C2 x L2 W	8.882M	
1	E27	278 C2 x L2 W	8.882M	
1	E28	278 C2 x L2 W	8.882M	
1	E29	278 C2 x L2 W	8.882M	
1	E30	278 C2 x L2 W	8.882M	
1	E31	278 C2 x L2 W	8.882M	
1	E32	278 C2 x L2 W	8.882M	
1	E33	278 C2 x L2 W	8.882M	
1	E34	278 C2 x L2 W	8.882M	
1	E35	278 C2 x L2 W	8.882M	
1	E36	278 C2 x L2 W	8.882M	
1	E37	278 C2 x L2 W	8.882M	
1	E38	278 C2 x L2 W	8.882M	
1	E39	278 C2 x L2 W	8.882M	
1	E40	278 C2 x L2 W	8.882M	
1	E41	278 C2 x L2 W	8.882M	
1	E42	278 C2 x L2 W	8.882M	
1	E43	278 C2 x L2 W	8.882M	
1	E44	278 C2 x L2 W	8.882M	
1	E45	278 C2 x L2 W	8.882M	
1	E46	278 C2 x L2 W	8.882M	
1	E47	278 C2 x L2 W	8.882M	
1	E48	278 C2 x L2 W	8.882M	
1	E49	278 C2 x L2 W	8.882M	
1	E50	278 C2 x L2 W	8.882M	
1	E51	278 C2 x L2 W	8.882M	
1	E52	278 C2 x L2 W	8.882M	
1	E53	278 C2 x L2 W	8.882M	
1	E54	278 C2 x L2 W	8.882M	
1	E55	278 C2 x L2 W	8.882M	
1	E56	278 C2 x L2 W	8.882M	
1	E57	278 C2 x L2 W	8.882M	
1	E58	278 C2 x L2 W	8.882M	
1	E59	278 C2 x L2 W	8.882M	
1	E60	278 C2 x L2 W	8.882M	
1	E61	278 C2 x L2 W	8.882M	
1	E62	278 C2 x L2 W	8.882M	
1	E63	278 C2 x L2 W	8.882M	
1	E64	278 C2 x L2 W	8.882M	
1	E65	278 C2 x L2 W	8.882M	
1	E66	278 C2 x L2 W	8.882M	
1	E67	278 C2 x L2 W	8.882M	
1	E68	278 C2 x L2 W	8.882M	
1	E69	278 C2 x L2 W	8.882M	
1	E70	278 C2 x L2 W	8.882M	
1	E71	278 C2 x L2 W	8.882M	
1	E72	278 C2 x L2 W	8.882M	
1	E73	278 C2 x L2 W	8.882M	
1	E74	278 C2 x L2 W	8.882M	
1	E75	278 C2 x L2 W	8.882M	
1	E76	278 C2 x L2 W	8.882M	
1	E77	278 C2 x L2 W	8.882M	
1	E78	278 C2 x L2 W	8.882M	
1	E79	278 C2 x L2 W	8.882M	
1	E80	278 C2 x L2 W	8.882M	
1	E81	278 C2 x L2 W	8.882M	
1	E82	278 C2 x L2 W	8.882M	
1	E83	278 C2 x L2 W	8.882M	
1	E84	278 C2 x L2 W	8.882M	
1	E85	278 C2 x L2 W	8.882M	
1	E86	278 C2 x L2 W	8.882M	
1	E87	278 C2 x L2 W	8.882M	
1	E88	278 C2 x L2 W	8.882M	
1	E89	278 C2 x L2 W	8.882M	
1	E90	278 C2 x L2 W	8.882M	
1	E91	278 C2 x L2 W	8.882M	
1	E92	278 C2 x L2 W	8.882M	
1	E93	278 C2 x L2 W	8.882M	
1	E94	278 C2 x L2 W	8.882M	
1	E95	278 C2 x L2 W	8.882M	
1	E96	278 C2 x L2 W	8.882M	
1	E97	278 C2 x L2 W	8.882M	
1	E98	278 C2 x L2 W	8.882M	
1	E99	278 C2 x L2 W	8.882M	
1	E100	278 C2 x L2 W	8.882M	

Notes:
 1. Shop To Fabricate All Corners And Edges Of Steel Plates Shown On Shop Drawings To A 1/8" Radius.
 2. Dimensions Are In Millimeters Unless Otherwise Noted.
 MATERIAL SPECIFICATIONS:
 Steel Pipe Shall Be AP 5, AP 7, AP 8, AP 9, AP 10, AP 11, AP 12, AP 13, AP 14, AP 15, AP 16, AP 17, AP 18, AP 19, AP 20, AP 21, AP 22, AP 23, AP 24, AP 25, AP 26, AP 27, AP 28, AP 29, AP 30, AP 31, AP 32, AP 33, AP 34, AP 35, AP 36, AP 37, AP 38, AP 39, AP 40, AP 41, AP 42, AP 43, AP 44, AP 45, AP 46, AP 47, AP 48, AP 49, AP 50, AP 51, AP 52, AP 53, AP 54, AP 55, AP 56, AP 57, AP 58, AP 59, AP 60, AP 61, AP 62, AP 63, AP 64, AP 65, AP 66, AP 67, AP 68, AP 69, AP 70, AP 71, AP 72, AP 73, AP 74, AP 75, AP 76, AP 77, AP 78, AP 79, AP 80, AP 81, AP 82, AP 83, AP 84, AP 85, AP 86, AP 87, AP 88, AP 89, AP 90, AP 91, AP 92, AP 93, AP 94, AP 95, AP 96, AP 97, AP 98, AP 99, AP 100.
 Steel Plate & Bar Shall Be A 5710, A 5712, A 5714, A 5716, A 5718, A 5720, A 5722, A 5724, A 5726, A 5728, A 5730, A 5732, A 5734, A 5736, A 5738, A 5740, A 5742, A 5744, A 5746, A 5748, A 5750, A 5752, A 5754, A 5756, A 5758, A 5760, A 5762, A 5764, A 5766, A 5768, A 5770, A 5772, A 5774, A 5776, A 5778, A 5780, A 5782, A 5784, A 5786, A 5788, A 5790, A 5792, A 5794, A 5796, A 5798, A 5800.

Qty	Mk	Length	Dim. 1"	Dim. 2"	Dim. 3"
2	63	336	88	138	88
2	67	336	122	138	88

Brookfield Fabricating Corp
 P.O. Box 400 - Appleton, Wisconsin 54912-0400
 Fax: 920-831-1000
 Website: www.brookfieldfabricating.com
 10/10/09

RECEIVED

FEB 7 2012

G.P.I.