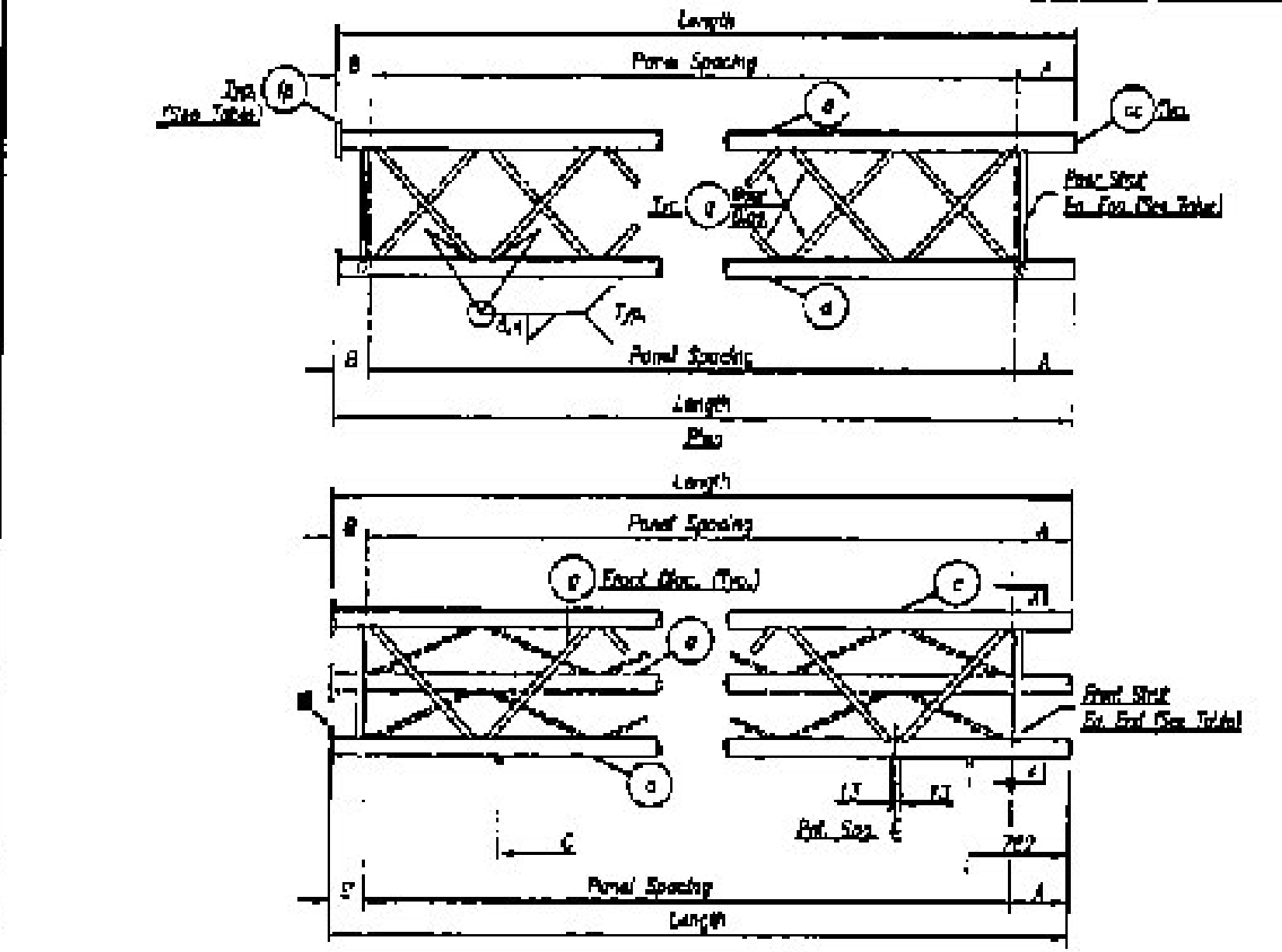
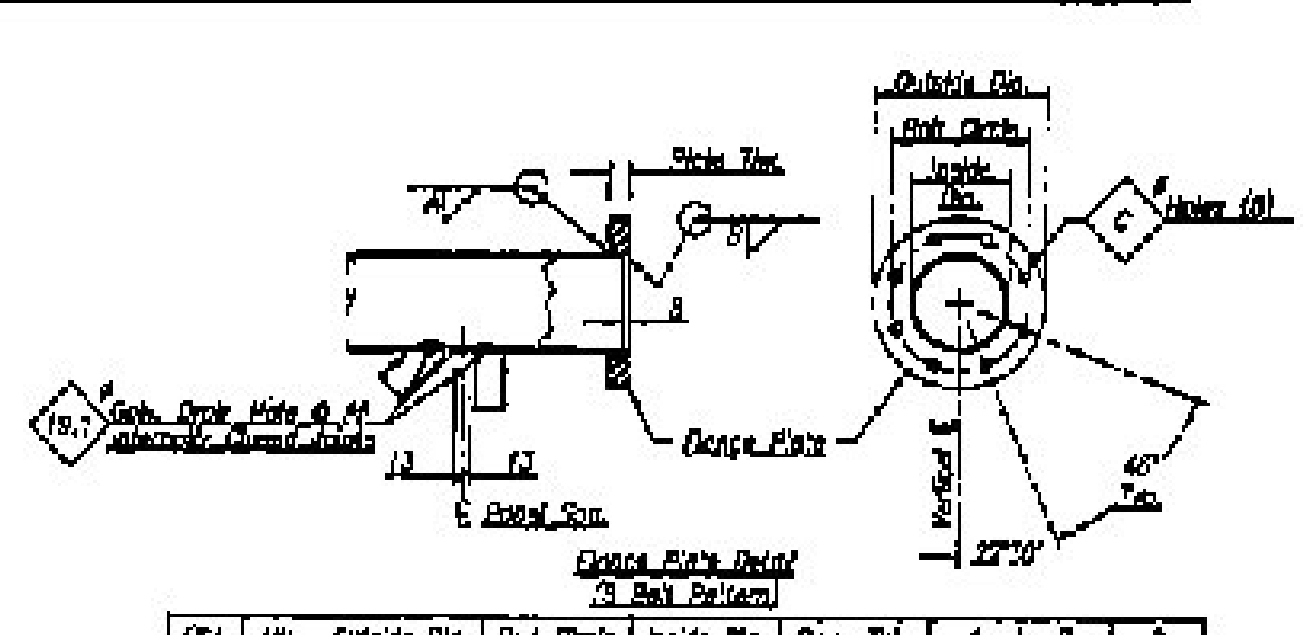


Qty.	Mat.	Description	Length	Remarks
3	1/2"	1/4" Dia x 4.0 K Pipe	11.250W	
3	1/2"	4"	1.375D	
24	1/2"	45.7 O.D. x 3.7 W Pipe	1.875W	Use To 1.875W @ 30'-0"
48	1/2"	4"	1.750D	Use To 1.750D @ 30'-0"
8	1/2"	4"	1.534H	Use To 1.534H @ 0'
12	1/2"	4"	1.375D	Use To 1.375D @ 0'
4	1/2"	17.8 Dia. Hot Rolled		
24	1/2"	22.9 x 19 K.S. Per AISC & AISC 89-1st Edition		

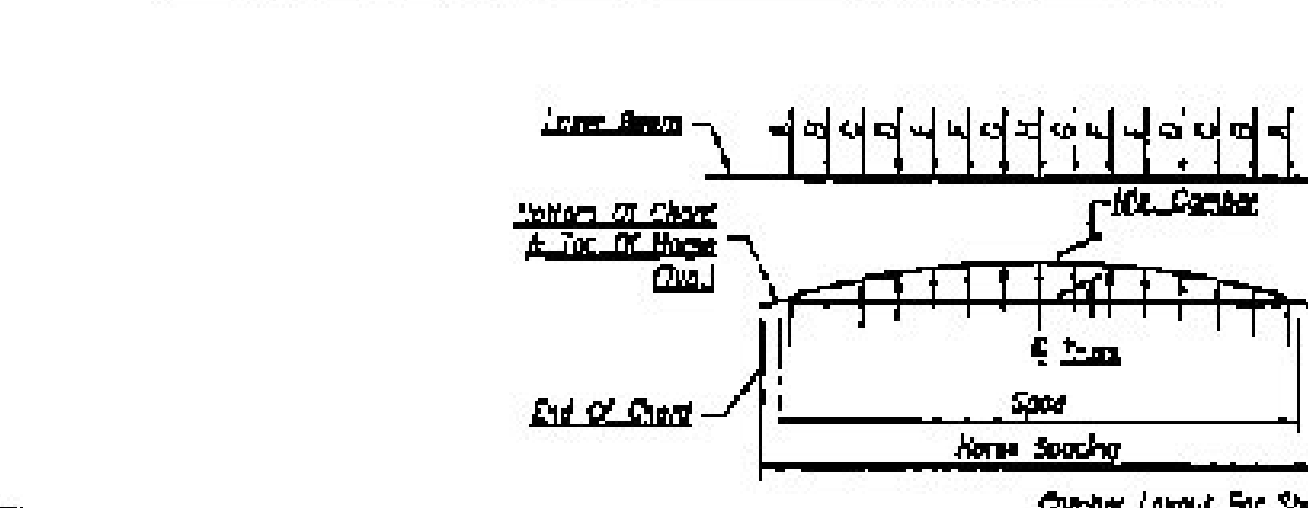
Qty.	Mat.	Length	Panel Spacing	A	B	C	Flange Wt.	End Stud Dia.	Front Stud Dia.	Rear Stud Dia.	Front Dia.	Rear Dia.
1	9L	11.250W	10 Sp. @ 1.125W = 11.250W	536	203		103	1/2"	1/2"	1/2"	1/2"	1/2"



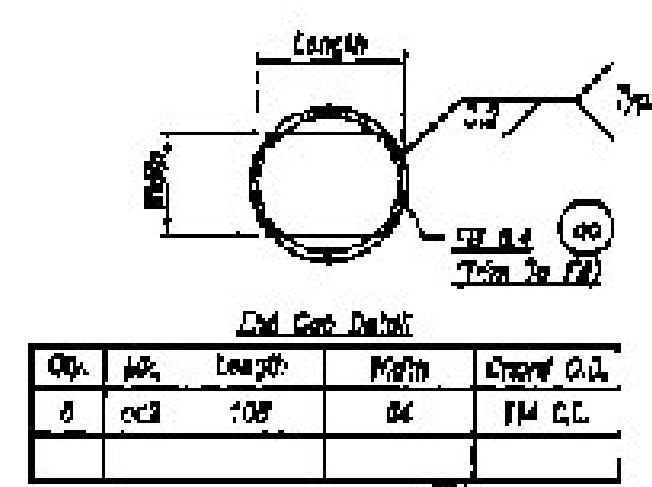
Qty.	Mat.	Length	Panel Spacing	A	B	C	Flange Wt.	End Stud Dia.	Front Stud Dia.	Rear Stud Dia.	Front Dia.	Rear Dia.
1	9R	11.250W	10 Sp. @ 1.125W = 11.250W	536	203		103	1/2"	1/2"	1/2"	1/2"	1/2"



Qty.	Mat.	Outside Dia.	End Stud Dia.	Inside Dia.	Flange Thk.	A	B	C
12	1/2"	287	191	178	25.4	9.3	4.8	25.4



Truss No.	Panel Spacing	Min. Member	Span	A	B	C	D	E	F	G	H
9L/9C/9R	7 Panel Sp. @ 3.972W	81	25.174W	49'	49'	64'	-	-	-	-	43'



Qty.	Mat.	Length	Width	Height O.D.
8	1/2"	108	84	14 O.D.



NOTE: The Truss Sections Shall Be Assembled Together With The Center Stud In.

Shall Have Section All W's On The Top Of The End Stud From Top.

Flange To Be Centered On Center Line Edge Of Steel Flange. Section C-C Shall Be Centered In A 1/2" From Center.

All Dimensions Are In Millimeters Unless Otherwise Noted.

MATERIAL SPECIFICATIONS:
 Steel Pipe & Stud: AISC 360-10, 10.2.1, 10.2.2, 10.2.3, 10.2.4, 10.2.5, 10.2.6, 10.2.7, 10.2.8, 10.2.9, 10.2.10, 10.2.11, 10.2.12, 10.2.13, 10.2.14, 10.2.15, 10.2.16, 10.2.17, 10.2.18, 10.2.19, 10.2.20, 10.2.21, 10.2.22, 10.2.23, 10.2.24, 10.2.25, 10.2.26, 10.2.27, 10.2.28, 10.2.29, 10.2.30, 10.2.31, 10.2.32, 10.2.33, 10.2.34, 10.2.35, 10.2.36, 10.2.37, 10.2.38, 10.2.39, 10.2.40, 10.2.41, 10.2.42, 10.2.43, 10.2.44, 10.2.45, 10.2.46, 10.2.47, 10.2.48, 10.2.49, 10.2.50, 10.2.51, 10.2.52, 10.2.53, 10.2.54, 10.2.55, 10.2.56, 10.2.57, 10.2.58, 10.2.59, 10.2.60, 10.2.61, 10.2.62, 10.2.63, 10.2.64, 10.2.65, 10.2.66, 10.2.67, 10.2.68, 10.2.69, 10.2.70, 10.2.71, 10.2.72, 10.2.73, 10.2.74, 10.2.75, 10.2.76, 10.2.77, 10.2.78, 10.2.79, 10.2.80, 10.2.81, 10.2.82, 10.2.83, 10.2.84, 10.2.85, 10.2.86, 10.2.87, 10.2.88, 10.2.89, 10.2.90, 10.2.91, 10.2.92, 10.2.93, 10.2.94, 10.2.95, 10.2.96, 10.2.97, 10.2.98, 10.2.99, 10.2.100.

Qty.	Mat.	Length	Width	Height O.D.
8	1/2"	108	84	14 O.D.

Brookfield Fabricating Corp
 P.O. Box 100 - Greenfield, Vermont 05602 - (802) 228-2211

1A Lathrop, Ver.

NY 095-1021
 Burlington County, Vermont

Fabrication Details Of 14-Board Deck Section For Box 101-1000

Sheet No. 2 of 3

Y:\scarey\111003-11999\11862\11862 Part D\11862D03.dwg

RECEIVED
 FEB 7 2012
 G.P.I.